

Installation Guide

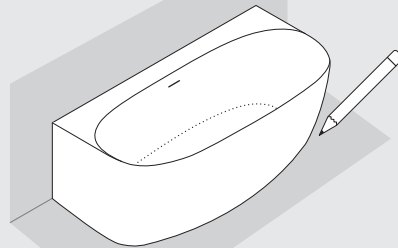
PERLATO

Perlato Akoya™ Almeria Freestanding Tub

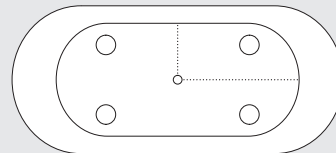
IMPORTANT

Before you begin installation, make sure that the tub is the correct model and size, and conduct a thorough inspection and water test. It is recommended to inspect tub for damage even if it was previously inspected.

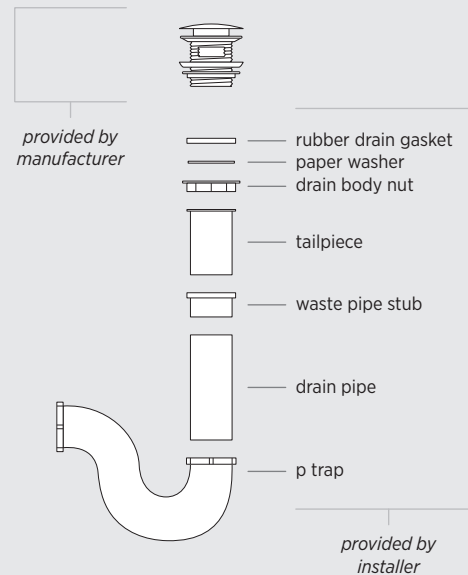
1. Place tub in desired position against wall and level it by adjusting leg height. Trace outline on floor and wall with erasable marking.



2. Move tub away, carefully placing it upside down on a protective surface. Measure distance from edge to drain pipe and mark location on floor.

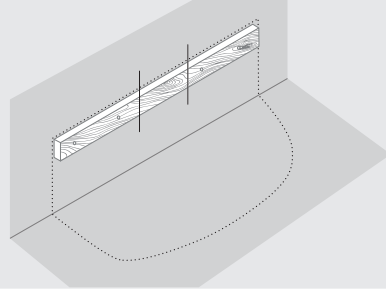


3. Clean the drain hole area and prepare tailpiece and drain pipe for connection to tub.

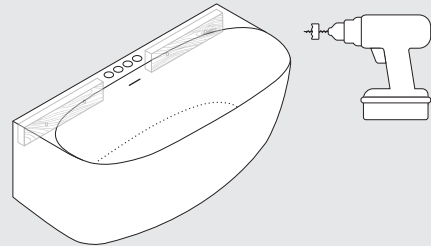


4. Attach wood block to wall to support tub ledge.

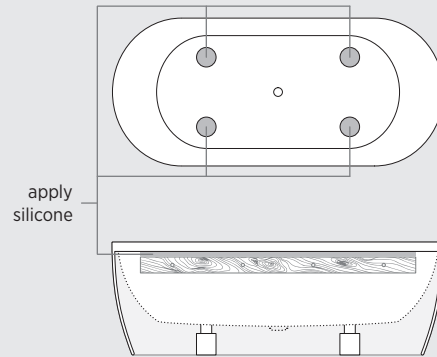
If using a deck-mounted faucet, wood block may need to be cut.



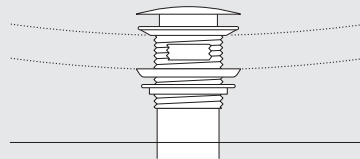
5. If using a deck-mounted faucet, drill holes, connect faucet, and make all necessary plumbing connections.



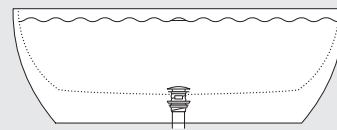
6. Generously apply adhesive or silicone to bottom of feet and top of wood block on wall.



7. Carefully set tub into its proper position and connect drain fittings to tailpiece.



8. Fill tub with water until the overflow and then drain the tub. Maintain access below floor level and inspect the waste connections for leaks as the water drains.



9. Run tub and tile caulk around edges of tub, where it meets the wall and floor. Use a wet cloth to wipe excess caulk.

