

# H<sub>2</sub>O+

WATER FILTRATION ●●●●

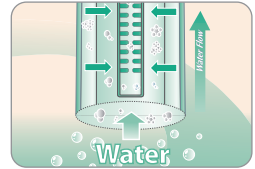
# OWNER'S MANUAL



# FEATURES

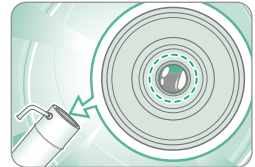
## 1. Advanced carbon block technology

Powerful filter reduces harmful contaminants while permitting passage of important minerals



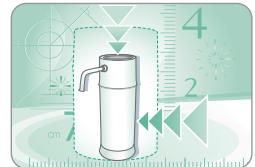
## 2. Filter replacement indicator

No need to worry about remembering to replace the filter. The filter replacement indicator will let you know when it's time to change the filter.



## 3. Stylish and compact design

Save space without giving up quality with the compact filtration system.



## 4. Instant & consistent water flow

Direct connection to the faucet provides instant water flow without the need for a water storage tank.



## 5. Quick and easy installation

Easy installation with faucet adapter kit, no additional plumbing work required.



# THANK YOU FOR YOUR PURCHASE!

Thank you for your purchase of this **Brondell H20+ Water Filtration Device**. Please be sure to read through this Owner's Manual for tips on how to use and maintain your product. If you do encounter a problem, please refer to this manual as a first step in troubleshooting prior to calling us. Thanks again for being a Brondell customer – we appreciate it!

## CONTENTS

### FOR INFORMATION

SAFETY INFORMATION.....	2
Installation safety.....	2
Operation safety.....	2
Others.....	2

TDS METERS AND TESTERS.....	3
-----------------------------	---

PARTS.....	4
------------	---

### HOW TO USE

INSTALLATION INSTRUCTIONS.....	5
--------------------------------	---

HOW TO USE.....	7
-----------------	---

### MAINTENANCE

INSTALLATION PRECAUTIONS.....	8
-------------------------------	---

FILTER REPLACEMENT.....	9
-------------------------	---

FILTER REPLACEMENT METHOD.....	10
--------------------------------	----

### OTHERS

TROUBLESHOOTING.....	11
----------------------	----

SPECIFICATION.....	12
--------------------	----

PERFORMANCE DATA SHEET.....	13
-----------------------------	----

WARRANTY.....	15
---------------	----

# SAFETY INFORMATION

## Please keep this safety information for reference.

Please read this information to prevent property loss and ensure your safety.



### Danger

If not observed, serious injury or even death could occur.



### Warning

If not observed, serious injury or property damage could occur.



### Caution

If not observed, slight injury or property damage could occur.

## Installation safety



**Do not install near a heating device.**

Fire may occur as a result.



**Do not install the product on a sloped surface.**

Injury to the user or damage to the unit may result.



**Do not compress or impact the product with force.**

Damage to the unit may result.



**The filtration device installation shall comply with applicable state and local regulations.**

## Operation safety



**Do not place flammable objects (such as matches or cigarettes) on the top of the unit.**

This may cause damage or injury.



**Change filters regularly.**

Injury to the user or damage to the unit may result.



**Do not repair, disassemble or modify the unit independently.**

Contact Customer Support at 888-542-3355.



**Do not place any containers with water, medicine, food, small metallic objects, or any flammable material on the top of the product.**

In the case foreign material gets inside the product, electric shock, fire, product damage may occur as a result.

## Others



**Do not use with water that is microbiologically unsafe or of unknown quality without adequate disinfection before or after the system.**



**Do not use harsh chemicals (only mild detergent and water) while cleaning the unit.**

Damage to the unit may result.



**Do not use filtered water for the water exchange of an aquarium or a fishbowl.**

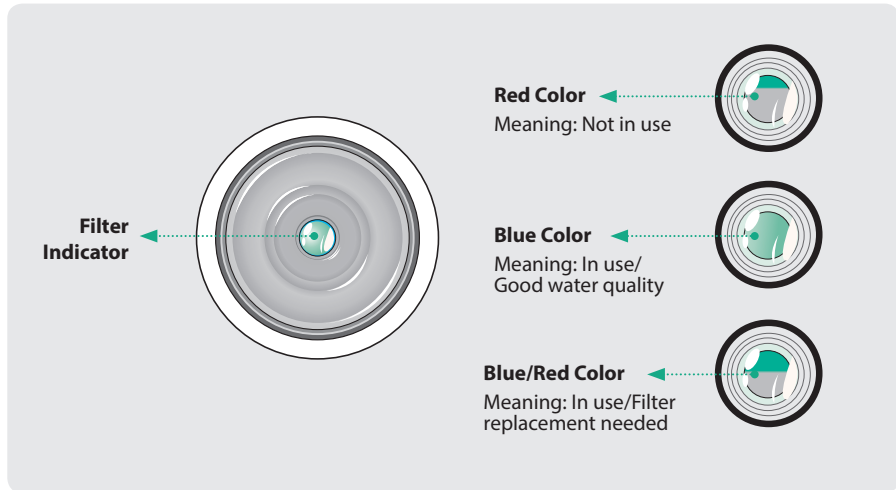
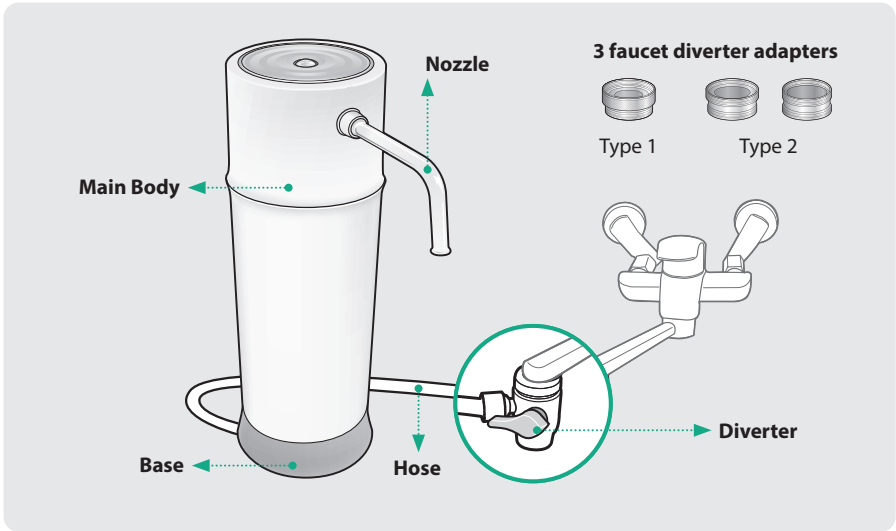
# IMPORTANT NOTE ABOUT "TDS METERS" AND TESTERS

**Q) When I use a Total Dissolved Particle (TDS) reader to test my water after it goes through the Pearl water filtration system, why don't the levels of dissolved particles go down or decrease? I don't think the product is working.**

The Pearl water filter system is not designed to remove beneficial minerals from your drinking water. These minerals that occur naturally are a healthy part of your drinking water and should remain. The Brondell Pearl water filter is designed to dramatically reduce water-soluble harmful contaminants, including industrial chemicals, pesticides, herbicides, turbidity, volatile organic compounds (VOC's), and microorganisms, most of which cannot be "read" with a TDS reader.

Since these harmful components are water-soluble, they cannot be picked up by a simple TDS meter. Contrary to its name (Total Dissolved Solids or TDS Meter), these inexpensive products cannot detect most harmful water-soluble contaminants. There is a major misconception that low TDS readings mean healthy water and that is simply not always true.

# PARTS



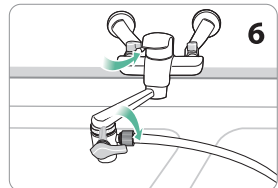
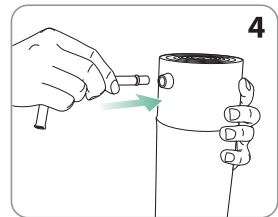
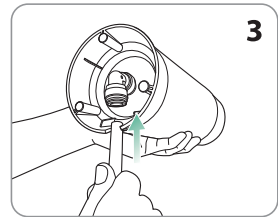
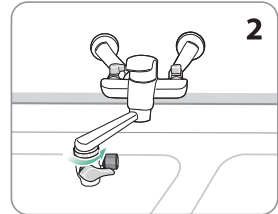
# INSTALLATION INSTRUCTIONS

## Follow the instruction guide for proper installation



If faucet has threads on the interior (after removing the aerator/faucet spout tip) you will need to use one of the provided faucet diverter adapters during installation.

1. Unscrew original aerator (faucet spout tip) from your water faucet.
2. Connect the faucet diverter to water faucet by hand tightening using any adapters as needed. If needed, use a wrench (spanner) or pliers, but be careful not to over tighten. Use 2 faucet diverter adapters (included) as needed for proper connection.
3. Connect the inlet hose to the inlet connection under the base. Then connect the other end of the hose to the faucet diverter.
4. Connect the supplied nozzle spout to outlet hole. Be sure to push in all the way.
5. Make sure the unit is placed securely on a flat surface and ensure the diverter is in the closed position to avoid spills.
6. Turn on faucet with cold water, turn diverter to open position and check all connections. Let water run through filter for 5 minutes to flush and activate filter.



**DO NOT USE HOT WATER.**

## Tips for using the Brondell H2O+ Water Filtration system

### 1. After installing the product

Flush and activate filter by running cold water for 5 minutes and be sure to check all connections for any leaking.

### 2. When not in use for prolonged periods

If water has been sitting in filter for a long time without use, run cold water for 5 minutes to flush prior to use.

### 3. Regularly replace filter – at least once every six months

It's important to replace the filter on a regular basis. Replace when the filter change indicator on the top shows more than half red when in use or within 6 months from last filter change, whichever comes first. To help manage when to change filter write the filter change date on filter label with permanent pen. If the filter is overused beyond its recommended service life, the performance of the water filtration device can deteriorate. Do not miss the filter replacement cycle.



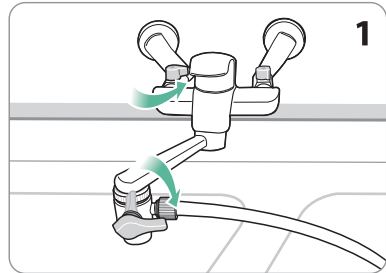
Tips

When not in use for a long time, close the main water supply valve under sink at wall and disconnect the unit.



# HOW TO USE

1. Turn on faucet and turn diverter switch to the open position.



2. Filtered water will be supplied from nozzle instantly.

3. To use faucet normally just turn the diverter to the closed position.



4. Remember to close diverter after each use.

# INSTALLATION PRECAUTIONS

## Caution

### 1. Water filtration device installation location

Do not install the water filtration system on an uneven surface, in a damp area or an area where the unit is exposed to direct sunlight.

### 2. Water filtration device installation location

Please install unit so that it is 4 inches or more from the wall(s) and the base is flat and firm.

### 3. After installing the water filtration system

Flush and activate filter by running cold water for 5 minutes.

### 4. Run only cold water

If you run hot water, the filter may become damaged. If hot water has accidentally been run through the filter, we recommend replacing it.

# FILTER REPLACEMENT

## Filter

The Brondell carbon block filter is critical to the performance of the H2O+ water filtration system and it's important to replace the filter on a regular basis. If the filter is overused beyond its recommended service life, the performance of the water filtration device can deteriorate. Do not miss the filter replacement cycle or use non-compatible filters as this can affect system performance or damage the unit.

\* To help manage when to change filter write the filter change date on filter label with permanent pen.

## Filter replacement cycle

The Brondell carbon block filter should be replaced when the filter change indicator on the top shows more than half red when in use or within 6 months from last filter change, whichever comes first. The filter replacement lifecycle may depend on the incoming water supply quality and poor quality water can shorten the regular replacement lifecycle.

\* The period for the filter exchange is made based on 0.84 Gallons use per household per day.

Model H625

Part No.	Names of Filter	Usable Period
HF-25	Carbon Block Replacement Filter	6 months

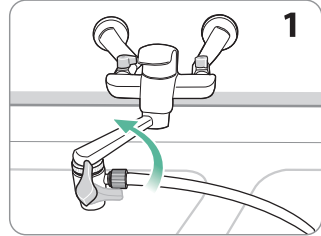
## About filter replacement cycle

The filter replacement cycle described above is not the filter quality warranty period but the expected cycle (life) that the filter will continue to perform at the original performance level.

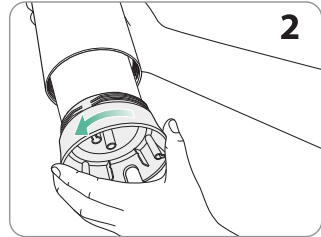
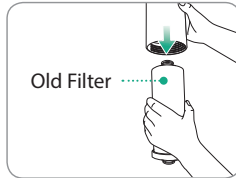
\* The filter replacement cycle may be reduced for areas with poor water quality or greater use.

# FILTER REPLACEMENT METHOD

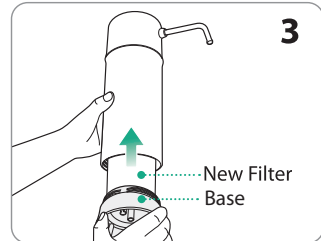
1. Turn diverter switch to the closed position.



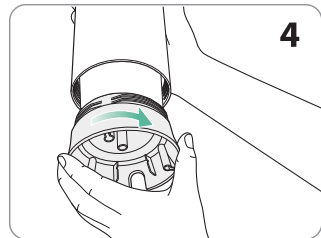
2. Unscrew the base and separate it from the main body. Remove the old filter by firmly pulling it out of the main body.



3. Secure new filter onto the base by firmly pushing down until connections are tight. Write the filter change date on filter label with permanent pen. Insert the filter back into main body.



4. Screw the base into the main body.



# TROUBLESHOOTING

Symptom	Check	Measures to take
Unusual taste of water.	• Is the temperature of the supply water too high?	Use cold water only and flush system for 2 minutes.
	• Is it time to replace the filter?	Replace the filter.
The amount of filtered water has suddenly increased or decreased.	• Is the supply water valve closed?	Check the supply water valve.
	• The temperature of the supply water dropped dramatically.	If the water temperature lowers dramatically, the amount of filtered water will reduce
	• Is the filter blocked or damaged?	Replace the filter.
No water comes out.	• Check if water supply valve under sink or the faucet diverter is closed.	Open supply valve and/or the diverter.
	• Have you missed your scheduled filter replacement?	Replace the filter.

# SPECIFICATIONS

Product	H2O+ Pearl Water Filtration Device
Model / SKU	H625
Filtration Method	Carbon Block Filter (Filter SKU: HF-25)
Dimension	3.9 in (D) x 11.3 in (H) < 98 mm (D) x 286 mm (H) >
Working Temperature	41 °F – 95 °F (5 °C – 35 °C)
Rated Service Flow	0.50 gpm
Working Pressure	Max. 102psi (0.7 MPa ) Normal 10 psi – 58 psi (0.07 MPa – 0.4 MPa)
Net Weight	1.81 lb (0.8 kg)

- The water flow and production rate can differ according to the water pressure and the water temperature.
- Without any prior notice, all or parts of the product are subject to change for the purpose of improving the performance of the product.
- Refer to Performance data sheet for individual contaminants, reduction performance and general operating information.

# Water Filtration System Performance Data Sheet

**Brand: H2O+**

**Model: H625**

Substance		Average Percent Reduction	Influent Challenge Concentration (mg/L unless specified)	Maximum Permissible Product Water Concentration or Minimum Allowable % Reduction (mg/L unless specified)
NSF/ANSI 42 Aesthetic Effects	Chlorine, Taste, & Odor	98.0%	2.00 ± 10%	≥ 50% Reduction
	Particulate Class 1 particles 0.5 to < 1µm	91.3%	at least 10,000 particles/mL	≥ 85% Reduction
NSF/ANSI 53 Health Effects	VOC's	99.8%	3.00 ± 10%	≥ 95% Reduction

While testing was performed under laboratory conditions, actual performance may vary.

## General Operating Information:

Rated Capacity	5,000 gal. for Aesthetic Chlorine / 150 gal. for VOC's
Min-Max operating pressure:	10 psi – 58 psi (0.07 MPa – 0.4 MPa)
Min-Max feed water temperature:	41 °F – 95 °F (5 °C – 35 °C)
Rated Service Flow	0.50 gpm

- Do not use with water that is microbiologically unsafe or of unknown quality without adequate disinfection before or after the system.
- Refer to the owners manual for specific installation instructions, manufacturer's limited warranty, user responsibility, and parts and service availability.
- For parts and service availability, please contact Brondell.
- The estimated replacement time of filter, which is a consumable part, is not an indication of quality guarantee period, but it means the ideal time of filter replacement. Accordingly, the estimated time of filter replacement may be shortened in case it is used in an area of poor water quality.

Model of Replacement Filter	Type	Usable period (months)
HF-25	CARBON BLOCK FILTER	6

## Volatile Organic Chemicals (VOCs) included by surrogate testing\*

Chemical	Drinking water regulatory level <sup>1</sup> (MCL/MAC) mg/L	Influent challenge concentration <sup>2</sup> mg/L	Chemical reduction percent	Maximum product water concentration mg/L
alachlor	0.002	0.05	> 98	0.001 <sup>3</sup>
atrazine	0.003	0.1	> 97	0.003 <sup>3</sup>
benzene	0.005	0.081	> 99	0.001 <sup>3</sup>
carbofuran	0.04	0.19	> 99	0.001 <sup>3</sup>
carbon tetrachloride	0.005	0.078	98	0.0018 <sup>4</sup>
chlorobenzene	0.1	0.077	> 99	0.001 <sup>3</sup>
chloropicrin	-	0.015	99	0.0002 <sup>3</sup>
2,4-D	0.07	0.11	98	0.0017 <sup>4</sup>
dibromochloropropane(DBCP)	0.0002	0.052	> 99	0.00002 <sup>3</sup>
o-dichlorobenzene	0.6	0.08	> 99	0.001 <sup>3</sup>
p-dichlorobenzene	0.075	0.04	> 98	0.001 <sup>3</sup>
1,2-dichloroethane	0.005	0.088	95 <sup>5</sup>	0.0048 <sup>5</sup>
1,1-dichloroethylene	0.007	0.083	> 99	0.001 <sup>3</sup>
cis-1,2-dichloroethylene	0.07	0.17	> 99	0.0005 <sup>3</sup>
trans-1,2-dichloroethylene	0.1	0.086	> 99	0.001 <sup>3</sup>
1,2-dichloropropane	0.005	0.08	> 99	0.001 <sup>3</sup>
cis-1,3-dichloropropylene	-	0.079	> 99	0.001 <sup>3</sup>
dinoseb	0.007	0.17	99	0.0002 <sup>4</sup>
endrin	0.002	0.053	99	0.00059 <sup>4</sup>
ethylbenzene	0.7	0.088	>99	0.001 <sup>3</sup>
ethylene dibromide (EDB)	0.00005	0.044	> 99	0.00002 <sup>3</sup>
haloacetonitriles (HAN)				
bromochloroacetonitrile	-	0.022	98	0.0005 <sup>3</sup>
dibromoacetonitrile	-	0.024	98	0.0006 <sup>3</sup>
dichloroacetonitrile	-	0.0096	98	0.0002 <sup>3</sup>
trichloroacetonitrile	-	0.015	98	0.0003 <sup>3</sup>
haloketones (HK):				
1,1-dichloro-2-propanone	-	0.0072	99	0.0001 <sup>3</sup>
1,1,1-trichloro-2-propanone	-	0.0082	96	0.0003 <sup>3</sup>
heptachlor (H-34, Heptox)	0.0004	0.08	> 99	0.0004
heptachlor epoxide	0.0002	0.0107 <sup>5</sup>	98	0.0002 <sup>6</sup>
hexachlorobutadiene	-	0.044	> 98	0.001 <sup>3</sup>
hexachlorocyclopentadiene	0.05	0.06	> 99	0.000002 <sup>3</sup>
lindane	0.0002	0.055	> 99	0.00001 <sup>3</sup>
methoxychlor	0.04	0.05	> 99	0.0001 <sup>3</sup>
pentachlorophenol	0.001	0.096	> 99	0.001 <sup>3</sup>
simazine	0.004	0.12	> 97	0.004 <sup>3</sup>
styrene	0.1	0.15	> 99	0.0005 <sup>3</sup>
1,1,1,2-tetrachloroethane	-	0.081	> 99	0.001 <sup>3</sup>
tetrachloroethylene	0.005	0.081	> 99	0.001 <sup>3</sup>
toluene	1	0.078	> 99	0.001 <sup>3</sup>
2,4,5-TP (silvex)	0.05	0.27	99	0.0016 <sup>4</sup>
tribromoacetic acid	-	0.042	> 98	0.001 <sup>3</sup>
1,2,4-trichlorobenzene	0.07	0.16	> 99	0.0005 <sup>3</sup>
1,1,1-trichloroethane	0.2	0.084	95	0.0046 <sup>4</sup>
1,1,2-trichloroethane	0.005	0.15	> 99	0.0005 <sup>3</sup>
trichloroethylene	0.005	0.18	> 99	0.0010 <sup>3</sup>
trihalomethanes (includes):				
chloroform (surrogate chemical)				
bromoform	0.080	0.300	95	0.015
bromodichloromethane				
chlorodibromomethane				
xylenes (total)	10	0.070	> 99	0.001 <sup>3</sup>

\* Chloroform was used as the surrogate chemical for VOC reduction claims

<sup>1</sup> These harmonized values were agreed upon by representatives of USEPA and Health Canada for the purpose of evaluating products to the requirements of this Standard.

<sup>2</sup> Influent challenge levels are average influent concentrations determined in surrogate qualification testing.

<sup>3</sup> Maximum product water level was not observed but was set at the detection limit of the analysis.

<sup>4</sup> Maximum product water level is set at a value determined in surrogate qualification testing.

<sup>5</sup> Chemical reduction percent and maximum product water level calculated at chloroform 95% breakthrough point as determined in surrogate qualification testing.

<sup>6</sup> The surrogate test results for heptachlor epoxide demonstrated a 98% reduction. These data were used to calculate an upper occurrence concentration which would produce a maximum product water level at the MCL.



# Warranty

**Brondell products are backed by some of the most comprehensive warranties in the industry. Brondell warrants that the H2O+ water filtration system shall be free from defects in material and workmanship under normal use and service.**

## **Brondell H2O+ Water Filtration System – One Year Limited Warranty**

100% Coverage of all parts and labor for the entire product for the first year from original date of purchase

### **Exclusions and Limitations**

1. BRONDELL warrants its products to be free from manufacturing defects under normal use and service. This warranty is extended only to the ORIGINAL PURCHASER.

2. BRONDELL's obligations under this warranty are limited to repairs or replacement, at BRONDELL's option, of products or parts found to be defective, provided that such products were properly installed and used in accordance with instructions. BRONDELL reserves the right to make such inspections as may be necessary in order to determine the cause of the defect. BRONDELL will not charge for labor or parts in connection with warranty repairs for the first full year from date of purchase on all products except those that may be subject to commercial use limitations.

3. BRONDELL is not responsible for the cost of removal, return (shipping) and/or reinstallation of products. This warranty does NOT apply to:

Damage or loss which occurs during shipment.

Damage or loss sustained through any natural or man-made causes beyond the control of BRONDELL, including but not limited to fire, earthquake, floods, etc.

Damage or loss resulting from sediments or foreign matter contained in a water system.

Damage or loss resulting from negligent or improper installation including installation of a unit in a harsh or hazardous environment.

Damage or loss resulting from removal, improper repair, modification of the product, or improper maintenance including damage caused by chlorine or chlorine related products

Damage or loss resulting from acts which are not the fault of Brondell or which the Product is not specified to tolerate.

4. This warranty gives you specific legal rights. You may have other rights which vary from state to state.

THIS WRITTEN WARRANTY IS THE ONLY WARRANTY MADE BY BRONDELL. REPAIR OR REPLACEMENT AS PROVIDED UNDER THIS WARRANTY SHALL BE THE EXCLUSIVE REMEDY AVAILABLE TO THE PURCHASER. BRONDELL SHALL NOT BE RESPONSIBLE FOR LOSS OF USE OF THE PRODUCT OR FOR OTHER INCIDENTAL, SPECIAL, FOR CONSEQUENTIAL DAMAGES OR EXPENSES INCURRED BY THE PURCHASER OR FOR LABOR OR OTHER COSTS DUE TO INSTALLATION OR REMOVAL OR COSTS OF REPAIRS BY OTHERS, OR FOR ANY OTHER EXPENSE NOT SPECIFICALLY STATED ABOVE. EXCEPT TO THE EXTENT PROHIBITED BY APPLICABLE LAW, ANY IMPLIED WARRANTIES, INCLUDING THAT OF MERCHANTABILITY, ARE EXPRESSLY LIMITED TO THE DURATION OF THIS WARRANTY. SOME STATES DO NOT ALLOW LIMITATIONS, SO THE ABOVE LIMITATION AND EXCLUSION MAY NOT APPLY TO YOU.

### **How to Obtain Service**

To obtain repair service under this warranty, you must contact an authorized BRONDELL Service Center to obtain an RMA (Return Merchandise Authorization) number. Proof of purchase in the form of a copy of your original receipt must accompany the returned unit for the warranty to be valid. Take or ship the unit pre-paid to the closest Brondell authorized service center along with your RMA number and proof of purchase.

