



## INSTRUCTIONS FOR “BASIX” SINGLE DOOR CABINETS

We appreciate your purchase of our AFINA “BASIX” Bath Cabinet, and would like to provide you with the following helpful hints.

- For protection in shipping, the **GLASS SHELVES** for your cabinet have been neatly placed outside the cabinet body (top or bottom). They are clearly identified by a label marked “**GLASS SHELVES**”. Please look carefully and remove before installation.
- **SHELF PINS** are inside the cabinet in an envelope marked “**SHELF PINS**”.
- It is important to make sure the cabinet body is level and plumb upon installation. Use a leveling instrument to ensure accuracy, or the door may not close and/or secure itself properly.
- You can hang your new cabinet hinge left or hinge right just by turning the cabinet over.
- **IMPORTANT NOTE:** The door on the **BASIX** cabinet is offset to one side. To make it center perfectly over your sink or vanity. We suggest you move your rough opening width dimension 5/8” towards the hinge side of the cabinet.
- When **RECESSING** the cabinet, use the two pre-drilled holes on each side of the cabinet interior. Screws are not supplied, as we do not know the type of material you are going into (i.e., wood studs, metal studs). Make sure the cabinet is level and plumb before securing into framing studs.
- When **SURFACE MOUNTING** – See separate **SURFACE MOUNTING INSTRUCTIONS** with your optional surface mount kit.
- When cleaning your new Afina cabinet, we recommend a mild cleanser, applied first to a rag or paper towel. Do not spray directly on to the mirror or frame.

We are confident your **AFINA** cabinet will reflect the quality and prestige you wish to convey in your home or business environment.

# ASSEMBLY AND ADJUSTMENT

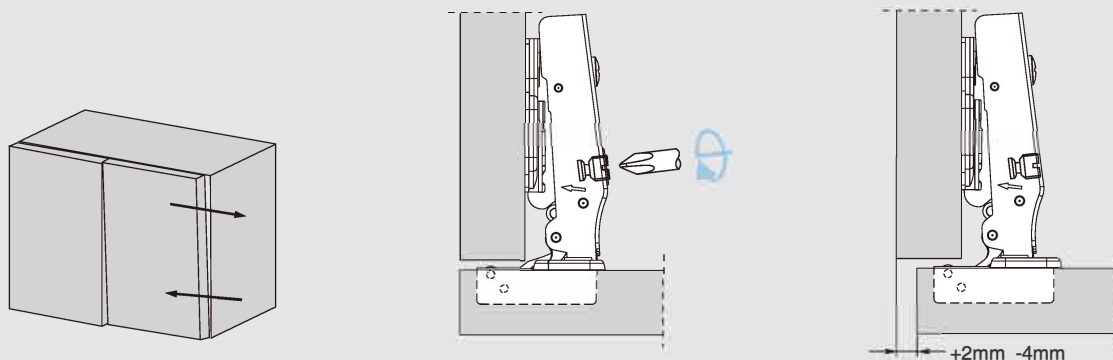
## PIVOT-PRO Hinges Installation and Parameters



### PLANNING

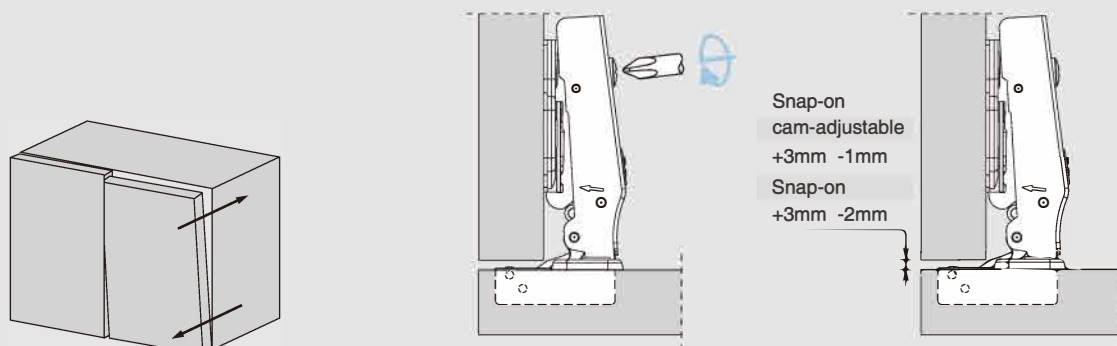
#### PIVOT-PRO side adjustment

Side adjustment of the door is made by using the indicated screw.



#### PIVOT-PRO depth adjustment

Depth adjustment is made without loosening any screw. The door can be moved in or out by rotating the cam adjuster on the hinge arm.



#### PIVOT-PRO height adjustment

By loosening the two fixing screws to allow the mounting plate to slide up or down, the door can be adjusted vertically by  $\pm 2\text{mm}$ . After retightening the screws, the depth adjustment is done.

