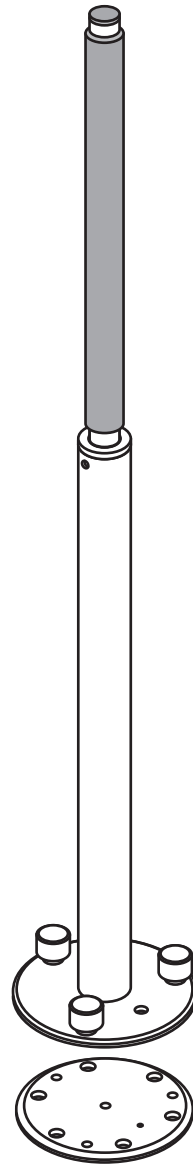


**Advantage Rail™
Portable**

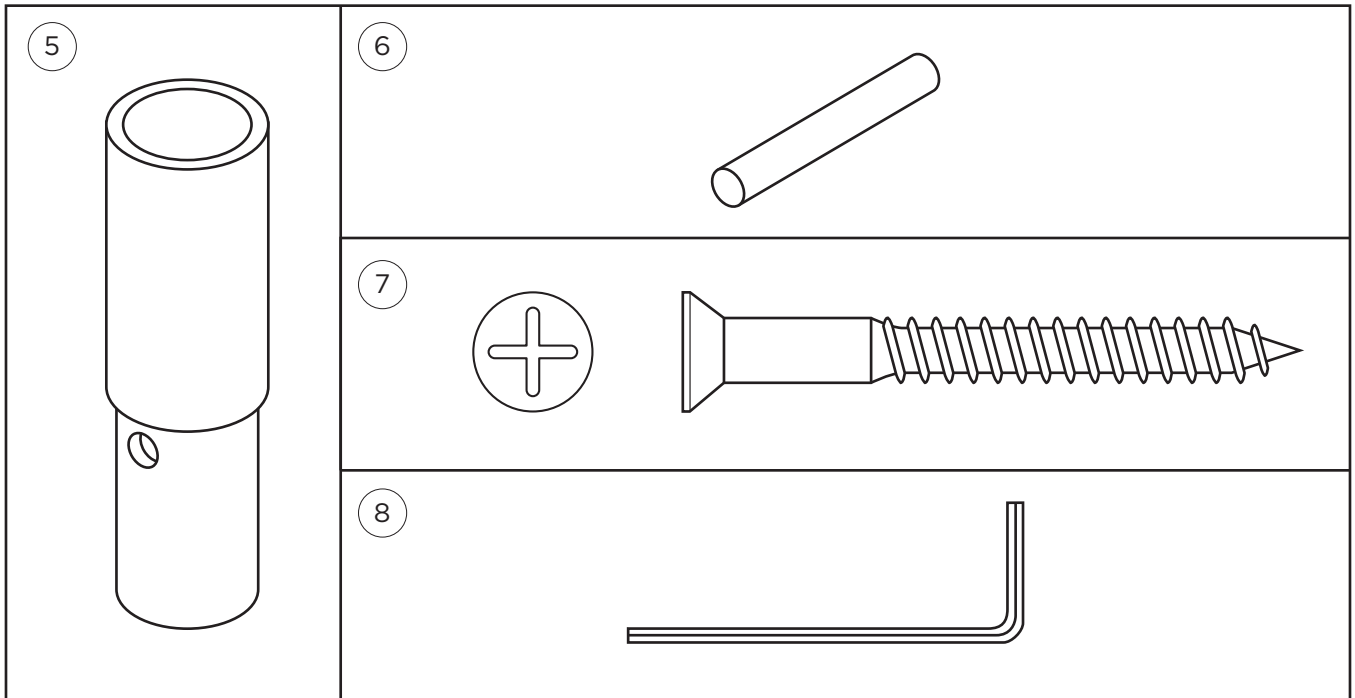
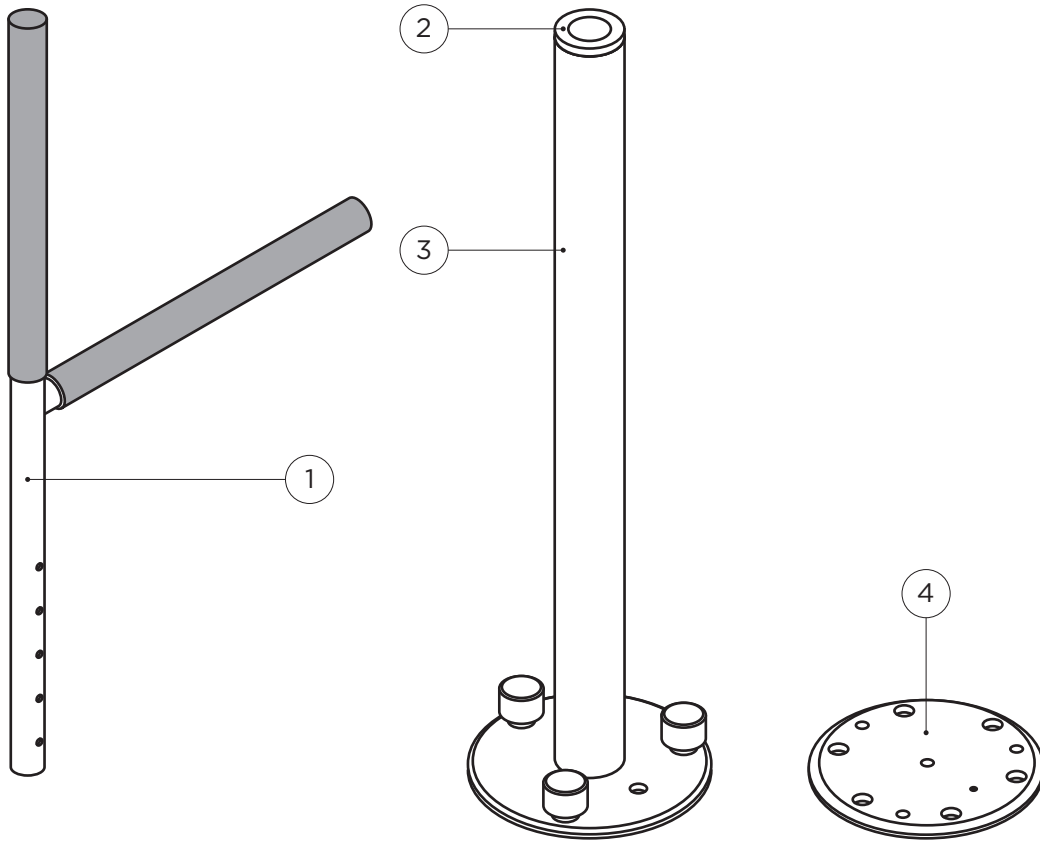
AR-PT
AR-PT-HD
AR-PT-TA
(DC107 - RevC)



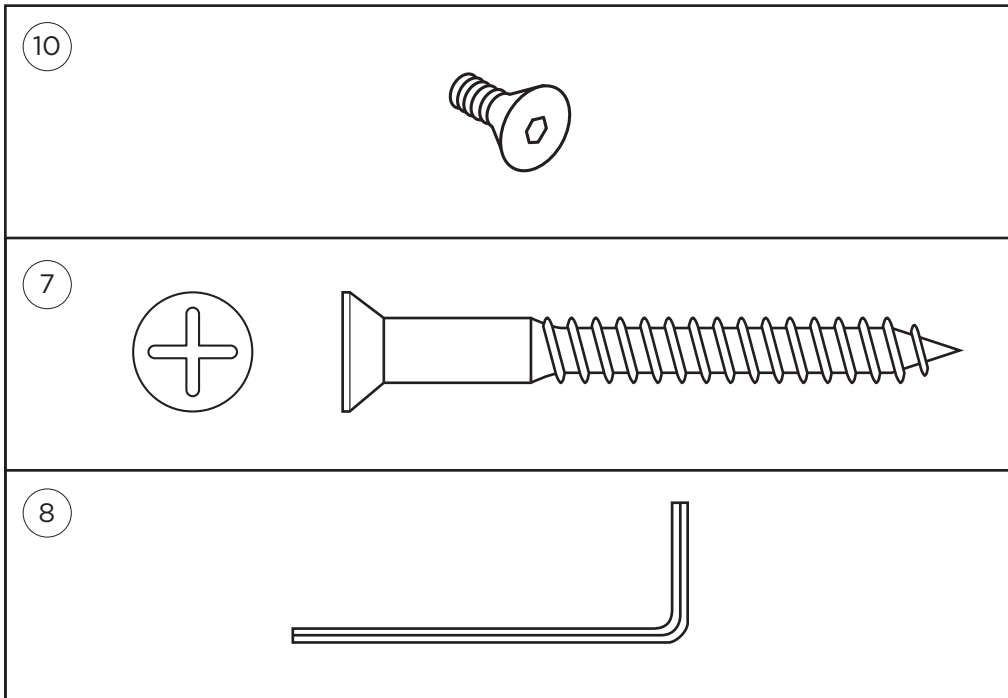
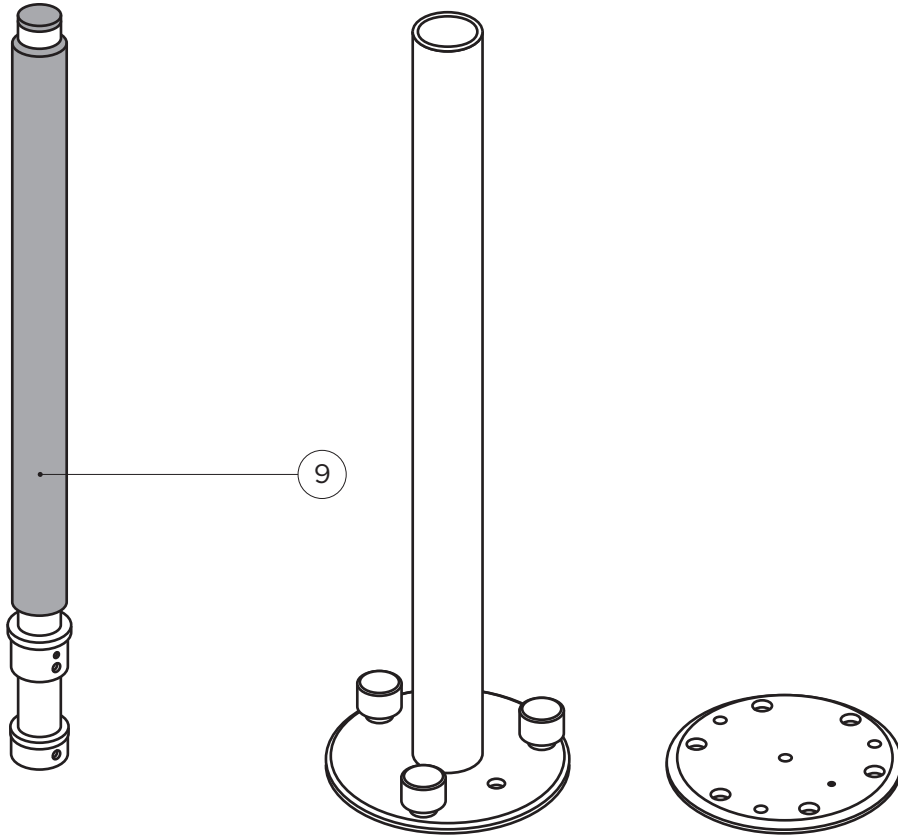
**Advantage Pole™
Portable**

AR-AP-P-HD

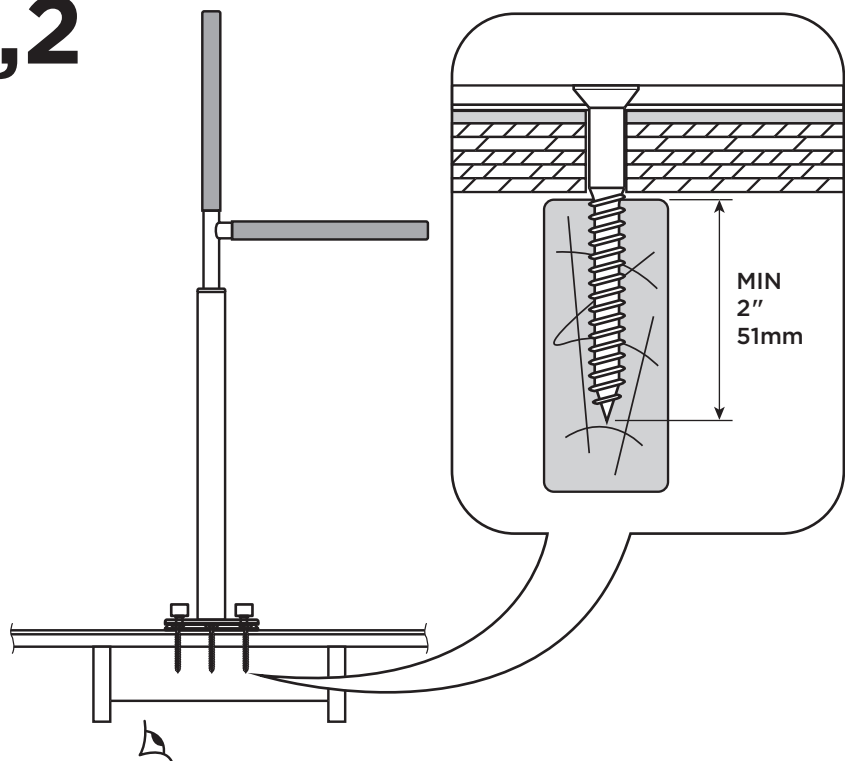
A



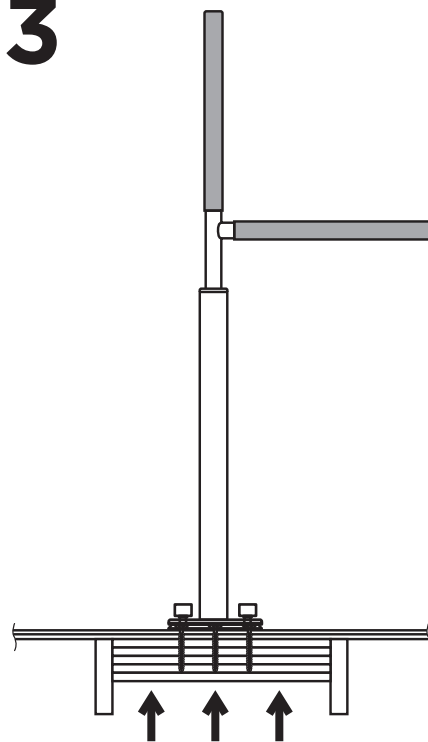
B



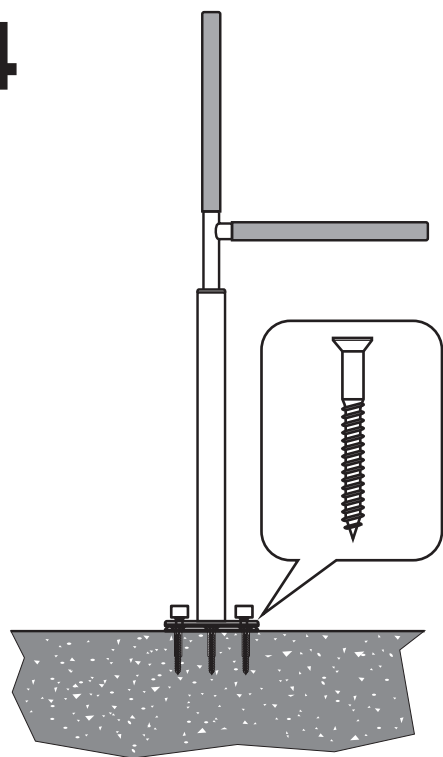
1,2



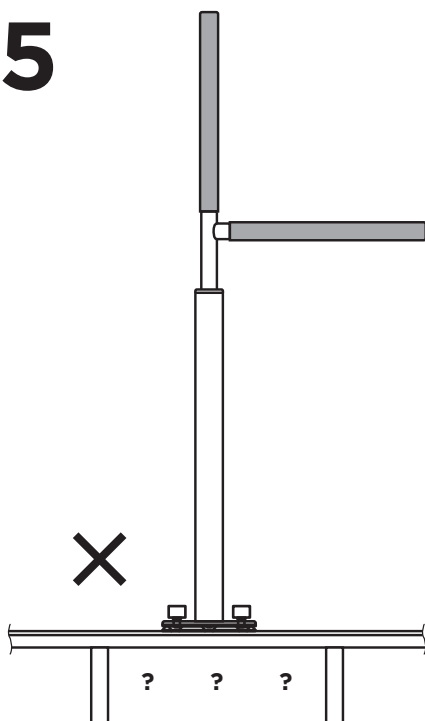
3



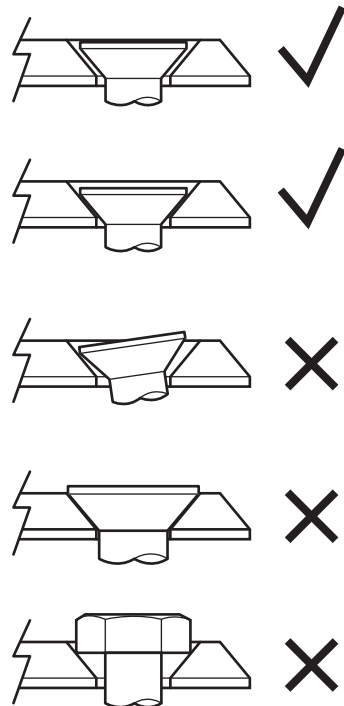
4



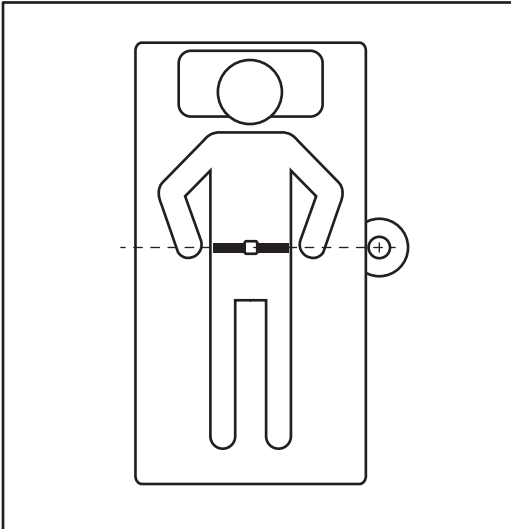
5



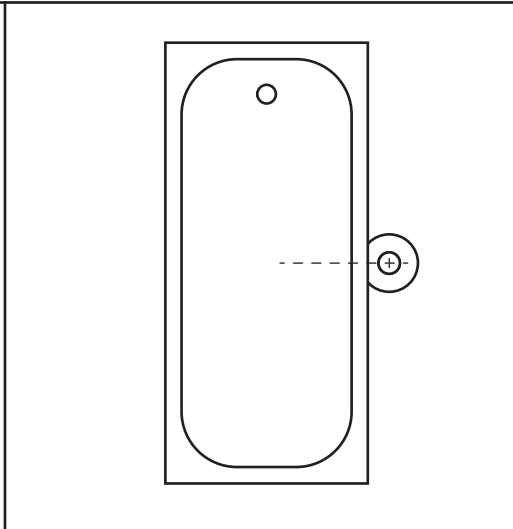
6



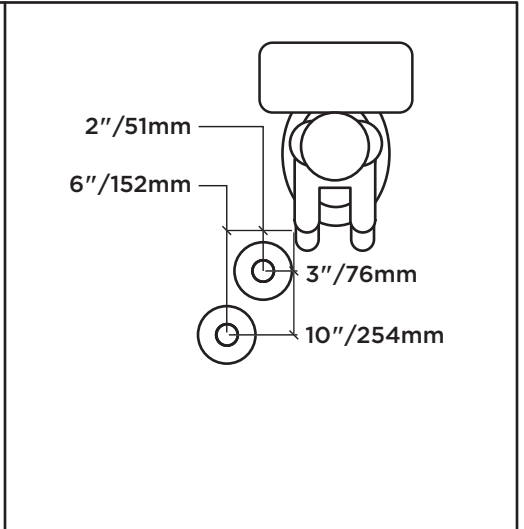
1



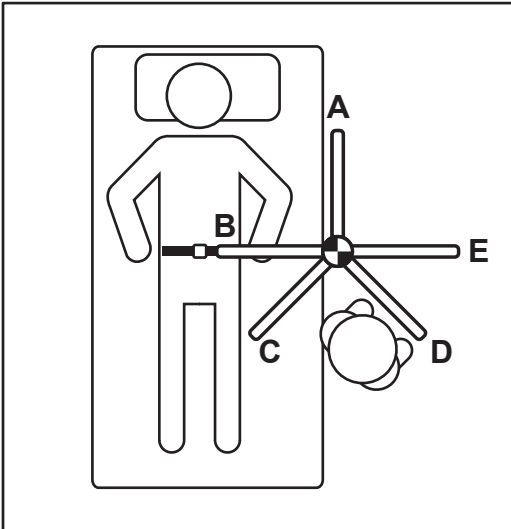
2



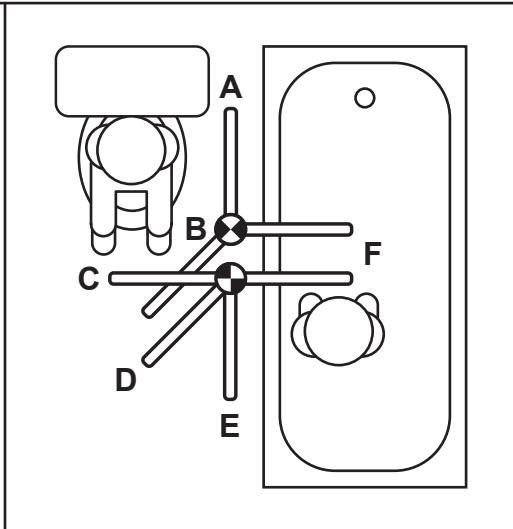
3



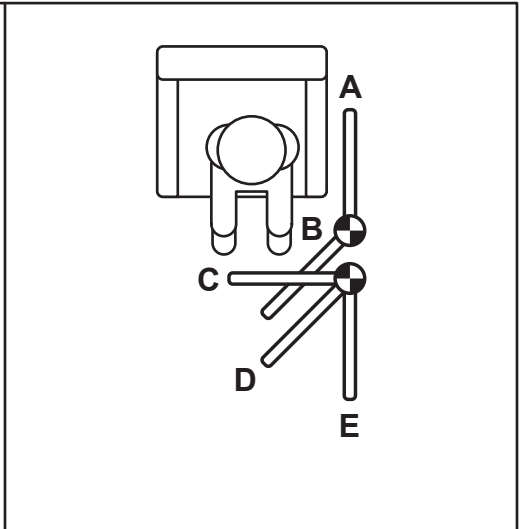
4



5

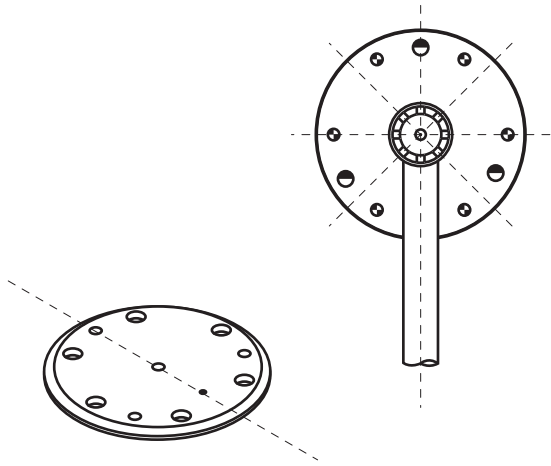


6

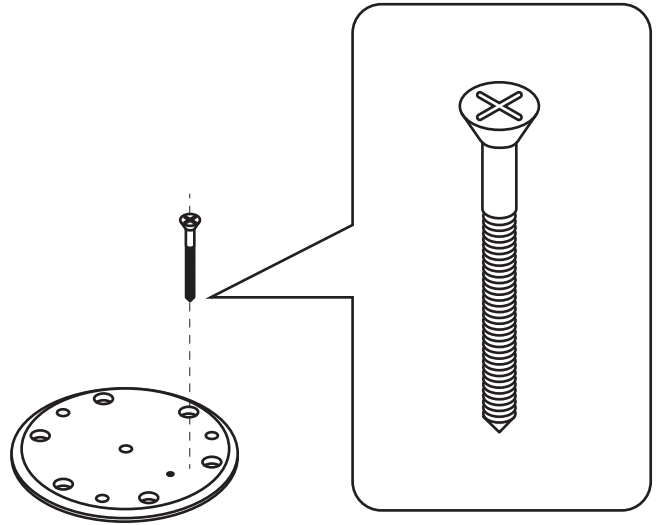


E

1

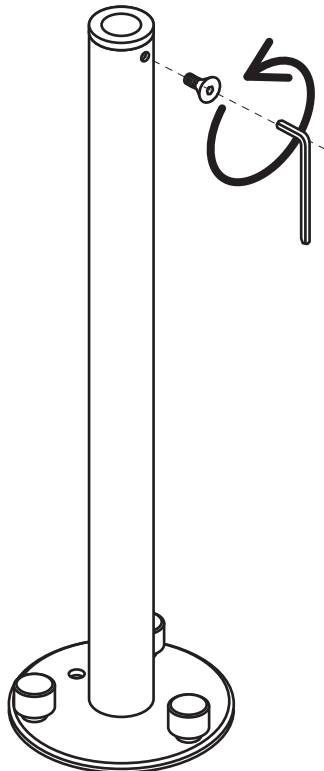


2

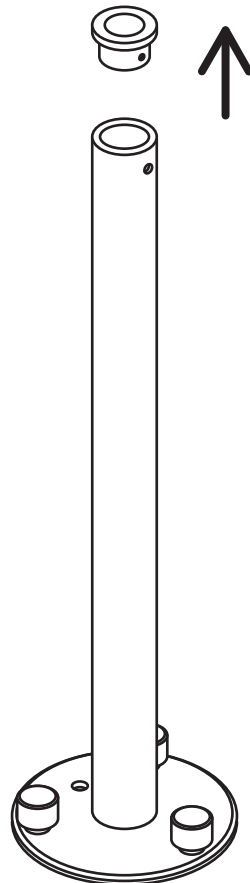


F

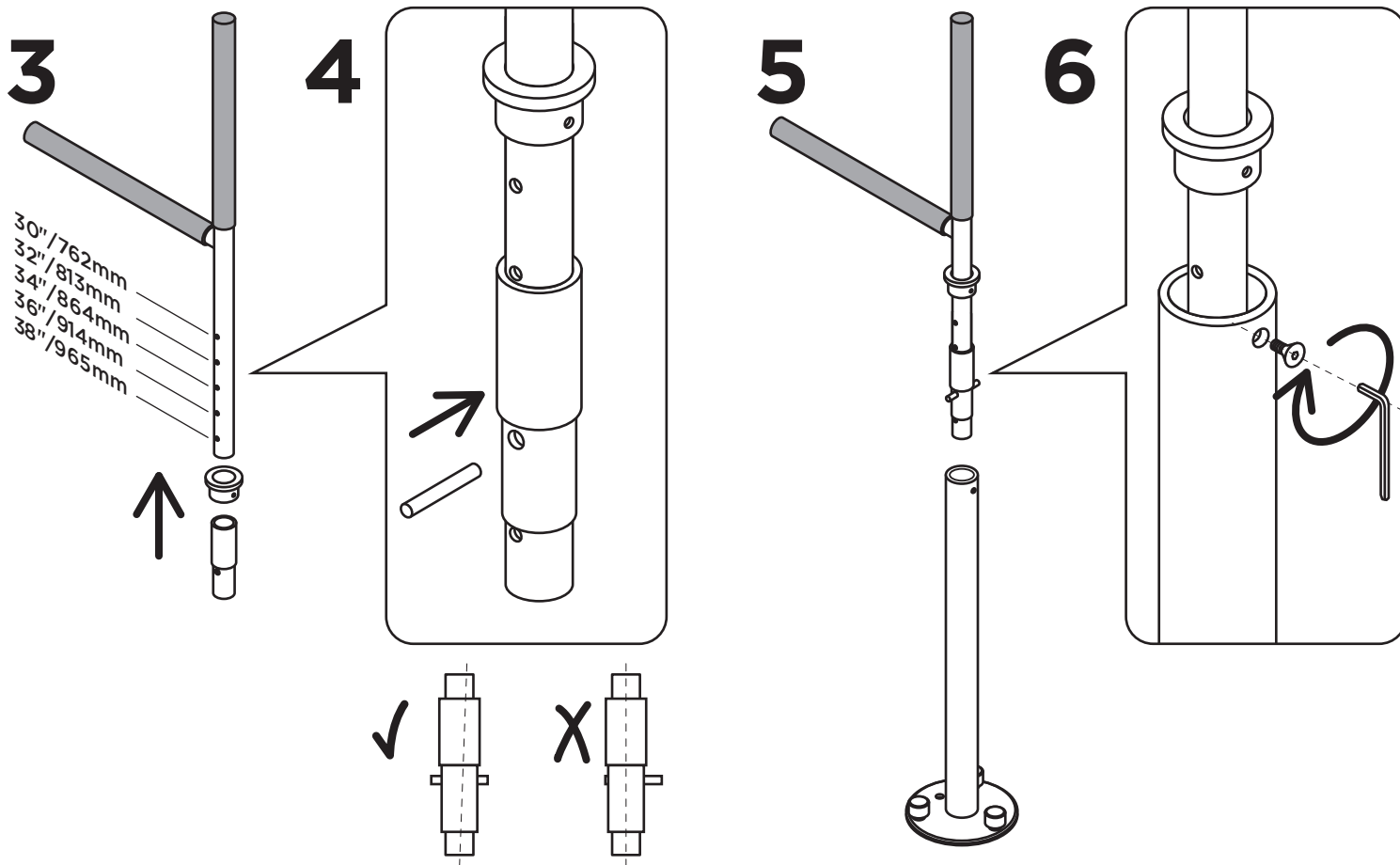
1



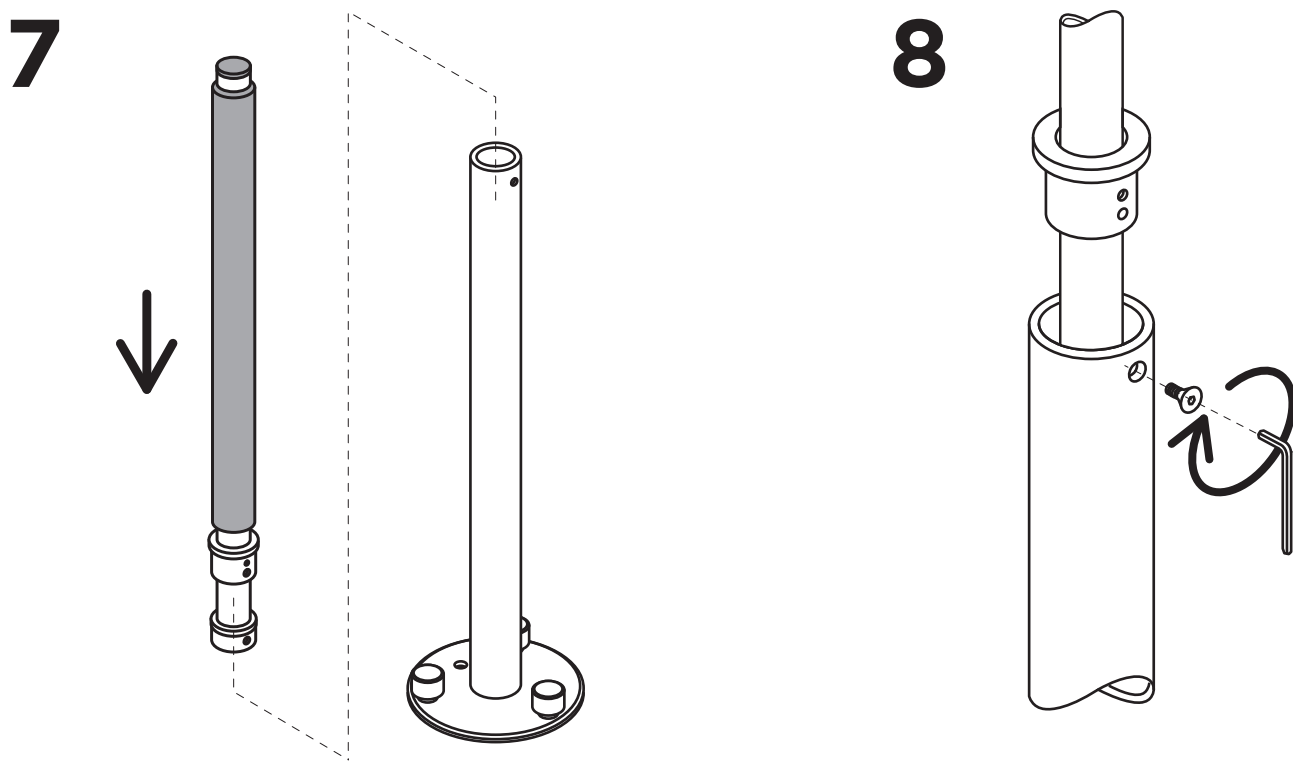
2

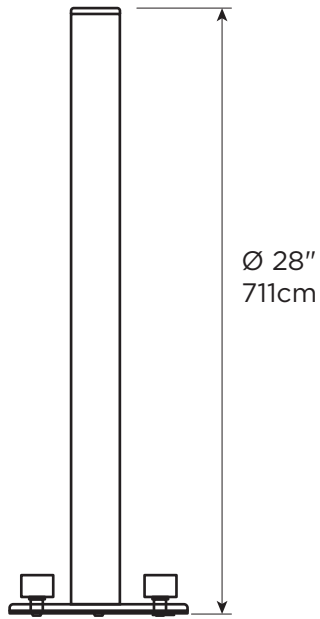
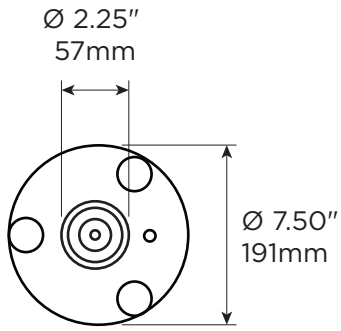


F



G





FE / NBR / HDPE

10.25lbs
4.65kg



AR-PT-TA
MAX
160lbs
75kg



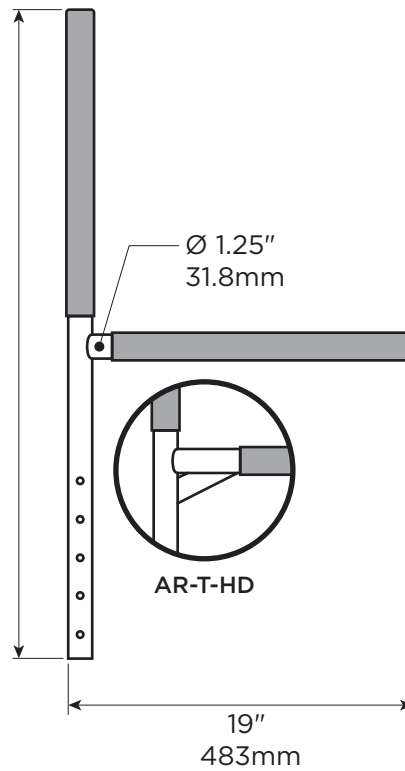
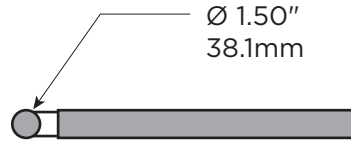
AR-PT
MAX
300lbs
136kg



AR-PT-HD
MAX
450lbs
205kg

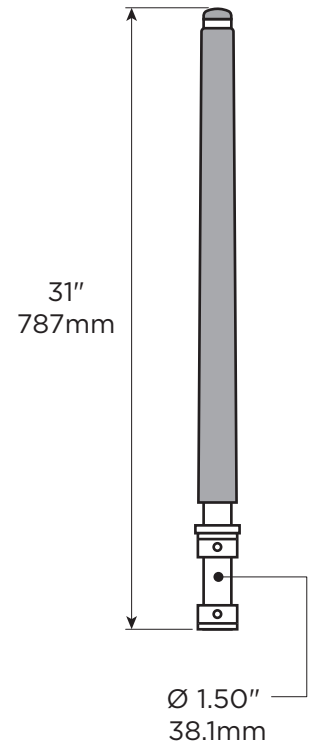
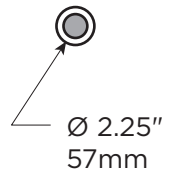


AR-AP-P-HD
MAX
450lbs
205kg



FE / PVC

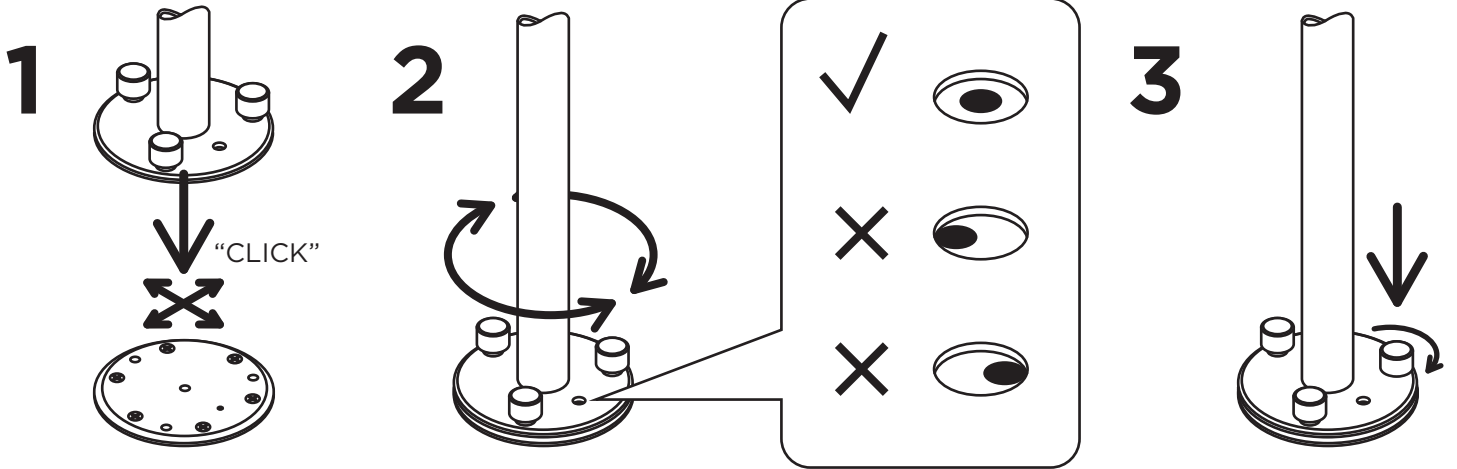
6.85lbs
3.11kg



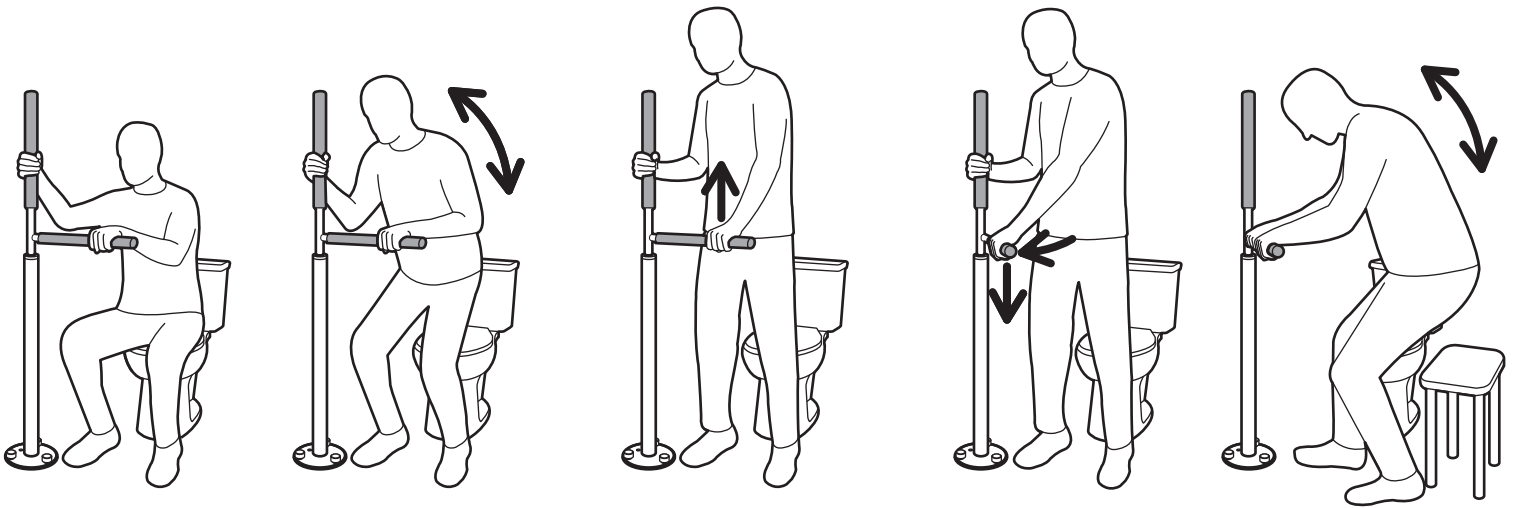
FE / POM / PVC

5.35lbs
2.43kg

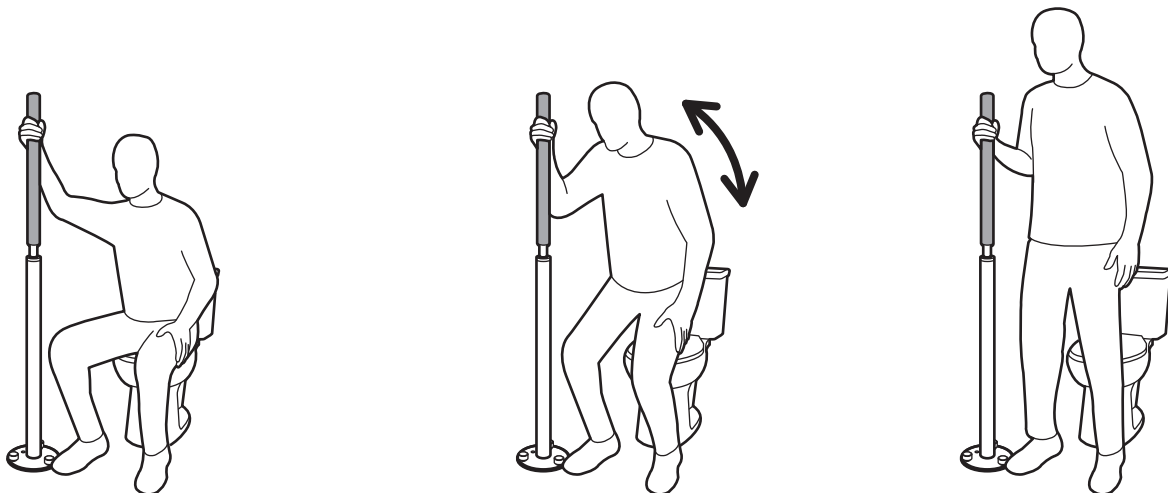
I



J



K



English

OVERVIEW

Thank you for choosing the Advantage Rail / Pole Portable from HealthCraft. Please read and understand the instructions in this manual; keep manual for future reference. It is your responsibility to see that your Advantage Rail / Pole Portable is properly assembled, installed, and cared for. Failure to follow instructions in this manual could result in serious injury or death. If you are not equipped to undertake the outlined work, we would recommend that you have your Advantage Rail / Pole Portable installed by a qualified contractor.

The Advantage Rail Portable is a high quality, commercial grade pivoting and locking horizontal bar that connects to a floor mounted mast. The horizontal bar can be lifted, pivoted and lowered to the next locking position around the mast. The Advantage Rail Portable is intended for moderate vertical and horizontal load bearing to provide sitting and standing support for people with reduced mobility. The Advantage Rail Portable mast is installed to a structural floor. Inside the mast is a locking mechanism for the horizontal bar: a castellated collar with 8 grooves (every 45 degrees) to provide a mechanism strong enough to support the user. It is important to set proper height and orientation of the Advantage Rail Portable to optimize the user's range of motion. The maximum user weight is dependent on model. Note: Product is not intended to support full body weight. The Advantage Rail Portable is not to be used in any other way than described above.

The Advantage Pole Portable is a high quality, commercial grade floor mounted support pole. The Advantage Pole Portable is intended for moderate vertical and horizontal load bearing to provide sitting and standing support for people with reduced mobility. The Advantage Pole Portable mast is installed to a structural floor. The maximum user weight is dependent on model. Note: Product is not intended to support full body weight. The Advantage Pole Portable is not to be used in any other way than described above.

WARNING - PATIENT ENTRAPMENT (see additional guidelines)

The potential risk of entrapment (limb, neck, head, torso) between the bed rail and adjacent item (i.e. mattress, headboard, sidetables, etc.) can be reduced or avoided by the following strategies:

1. Situate the bed rail at a distance that is considerably smaller or larger than that which could result in entrapment.
2. Consider situations that could change with time or usage such as mattress compression, patient movement, bed position changes due to electrically powered beds, etc.
3. Realize that this product is not intended as a physical constraint or barrier to exiting the bed.

LIMITED LIFETIME WARRANTY

Products are covered by a limited lifetime warranty against defects in materials and workmanship for the original purchaser. Warranty excludes products that have been damaged through misuse, accidental damage, alteration, normal wear and tear, wood material and stain, or the use of corrosive or abrasive cleaning products.

Buyer hereby indemnifies, agrees to hold harmless and defend HealthCraft Products Inc. from and against any and all liabilities, claims, (founded and unfounded), losses, damages, costs and expenses (including without limitation consequential damages and reasonable professional fees) resulting from buyers specification, application, or improper use of goods described hereon; buyers omission or neglect. HealthCraft Products Inc. does not assume any liability for damage resulting from services performed by others or faulty installation, misuse or misapplication of goods sold by HealthCraft Products Inc. HealthCraft Products Inc. shall not be liable for prospective profits or special, indirect, or consequential damages, or for the cost of any corrective work done without HealthCraft Products Inc. prior approval. HealthCraft Products Inc. total liability hereunder shall in no event exceed the purchase price of the goods specified hereon. Specifications subject to change without notice.



DELIVERY CONTENTS - ADVANTAGE RAIL PORTABLE

FIGURE A.

- | | |
|----------------------|-----------------------------------|
| 1. T-Handle Assembly | 5. Pivot Sleeve |
| 2. Pivot Bushing | 6. Pin |
| 3. Mast Assembly | 7. 1/4" x 3" length Lag Bolt (x6) |
| 4. Floor Plate | 8. 3/32" Hex Key |

DELIVERY CONTENTS - ADVANTAGE POLE PORTABLE

FIGURE B.

- | | |
|------------------|-----------------------------|
| 9. Pole Assembly | 10. #8-32 x 3/8" Screw, S/S |
|------------------|-----------------------------|

INSTALLATION WARNINGS

FIGURE C.

1. Mast must be installed to floors that are structurally sound.
2. Ideal if mast can be aligned and secured directly to floor joist.
3. If desired installation location does not have adequate structure, add wood blocking.
4. If mounting mast to concrete, use appropriate methods and fasteners (not included). Example: Tapcon.
5. CAUTION - do not install if structure in floor is unknown.
6. Ensure fastener heads do not protrude above top surface of floor plate (install flush or sub-flush). Do not install fasteners on an angle. Do not use fasteners that protrude above top surface (too large or different head).
Supplied fasteners for wood structure only (minimum thread engagement 2" / 51mm). If using other fasteners, ensure screw retention force rating at least 600lbs/272kgs (800lbs/360kgs for HD).

ADVANTAGE RAIL / POLE PORTABLE PLACEMENT

FIGURE D.

1. BEDROOM - Locate pole adjacent to waistline, and as close to bed as possible while allowing clearance for bed coverings.
2. BATHTUB ONLY - Locate pole base against tub, approximately half way along its length
3. SEATING (TOILET or CHAIR) - To provide clearance when standing, locate pole 3-10" / 76mm-254mm forward of the knees, and 2-6" / 51mm-154mm to the side of knees when sitting.

SUGGESTED ADVANTAGE RAIL PORTABLE POSITIONS

FIGURE D.

- | | |
|---|--|
| 4. BEDROOM | 5. BATHROOM or 6. SITTING |
| A = side support / out of the way | A = side support / out of the way |
| B = in-bed support | B = standing or transfer support |
| C = sitting support | C = standing support |
| D = standing support | D = standing or transfer support |
| E = transfer support to walker / wheelchair | E = standing or transfer support |
| | F = transfer support in/out of bathtub |

FLOOR PLATE INSTALLATION

FIGURE E.

1. Note the orientation of the 8 locking positions in relation to the floor plate.
2. Secure floor plate to floor using fasteners appropriate to the floor material.

ADVANTAGE RAIL PORTABLE ASSEMBLY

FIGURE F.

1. Remove set screw using hex key.
2. Remove pivot bushing from mast.
3. Slide pivot bushing and pivot sleeve onto handle, and align hole on pivot sleeve with the corresponding hole on rail to set height from floor.
4. Insert pin thru pivot sleeve and rail.
5. Lower handle assembly into the top of the mast.
6. Align hole of pivot bushing with mast, and secure with set screw.

ADVANTAGE POLE PORTABLE ASSEMBLY / INSTALLATION

FIGURE G.

7. Lower handle assembly into the top of the mast.
8. Align hole of pivot bushing with mast, and secure with set screw.

TECHNICAL DATA

See Figure H.

OPERATING INSTRUCTIONS

FIGURE I.

1. Place mast on top of floor plate, and move side to side to ensure alignment pin "clicks" into center hole of floor plate.
2. Rotate mast until alignment marks appears in the middle of sight hole.
3. Push down knob and turn clockwise until tight (x3).

PRODUCT USAGE

See Figures J & K.