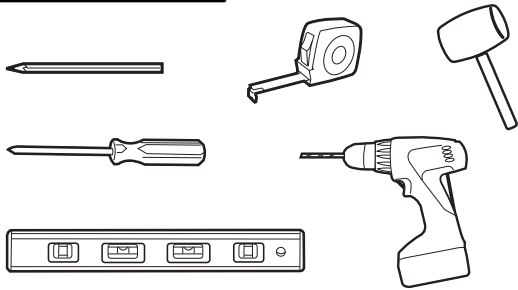
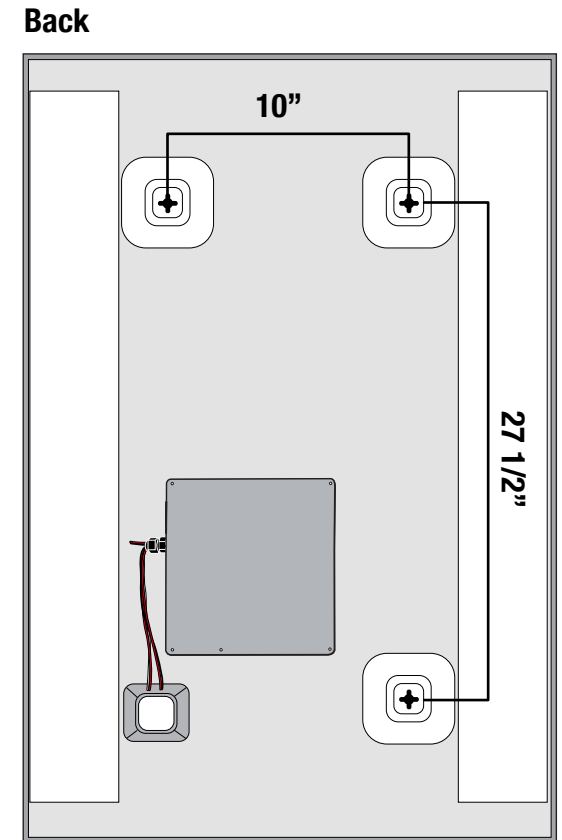
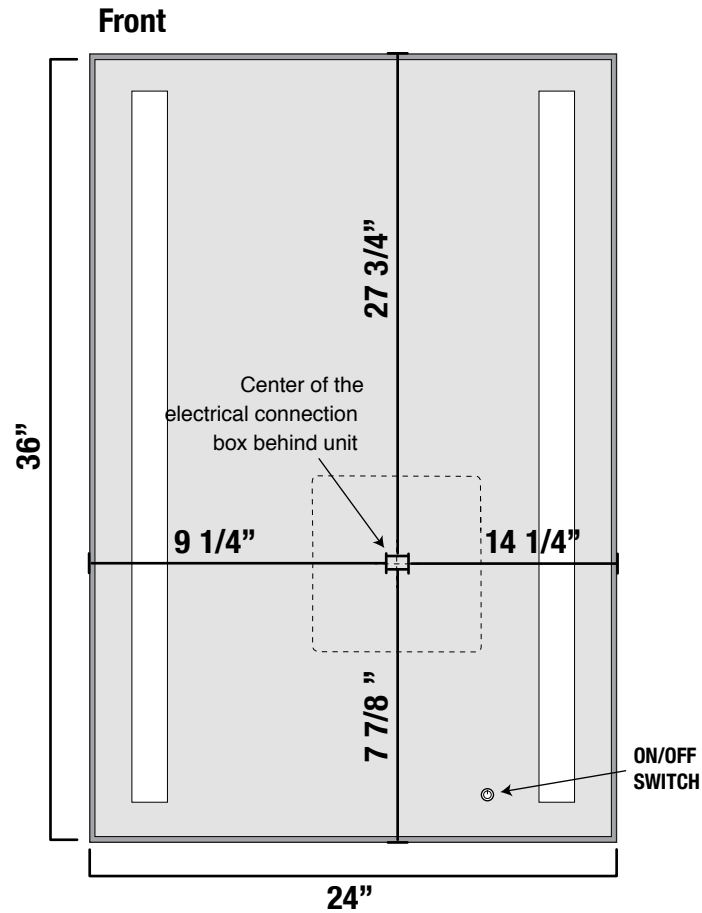
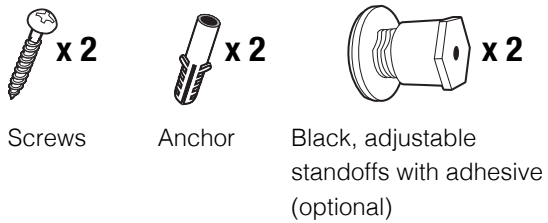


**Tools Required**



**Supplied Hardware**



Product improvements are continual.  
Measurements may vary.  
Please verify all dimensions prior to installation.

**Mounting Instructions**

**Step 1**

**2x4 Stud**  
*(if possible)*

**10" (vertical mount)**  
**27 1/2" (horizontal mount)**

**Step 2**

**2x4 Stud**  
*(if possible)*

**Step 3**

**2x4 Stud**  
*(if possible)*

If stud is not present, use drywall anchor.

**Step 4**

Mounting Screws

Electrical Gang Box

Electrical Connection Box

The electrical gang box should be installed according to the location of the unit's electrical connection box located on the back.

**Step 5**

**Remove Cover**

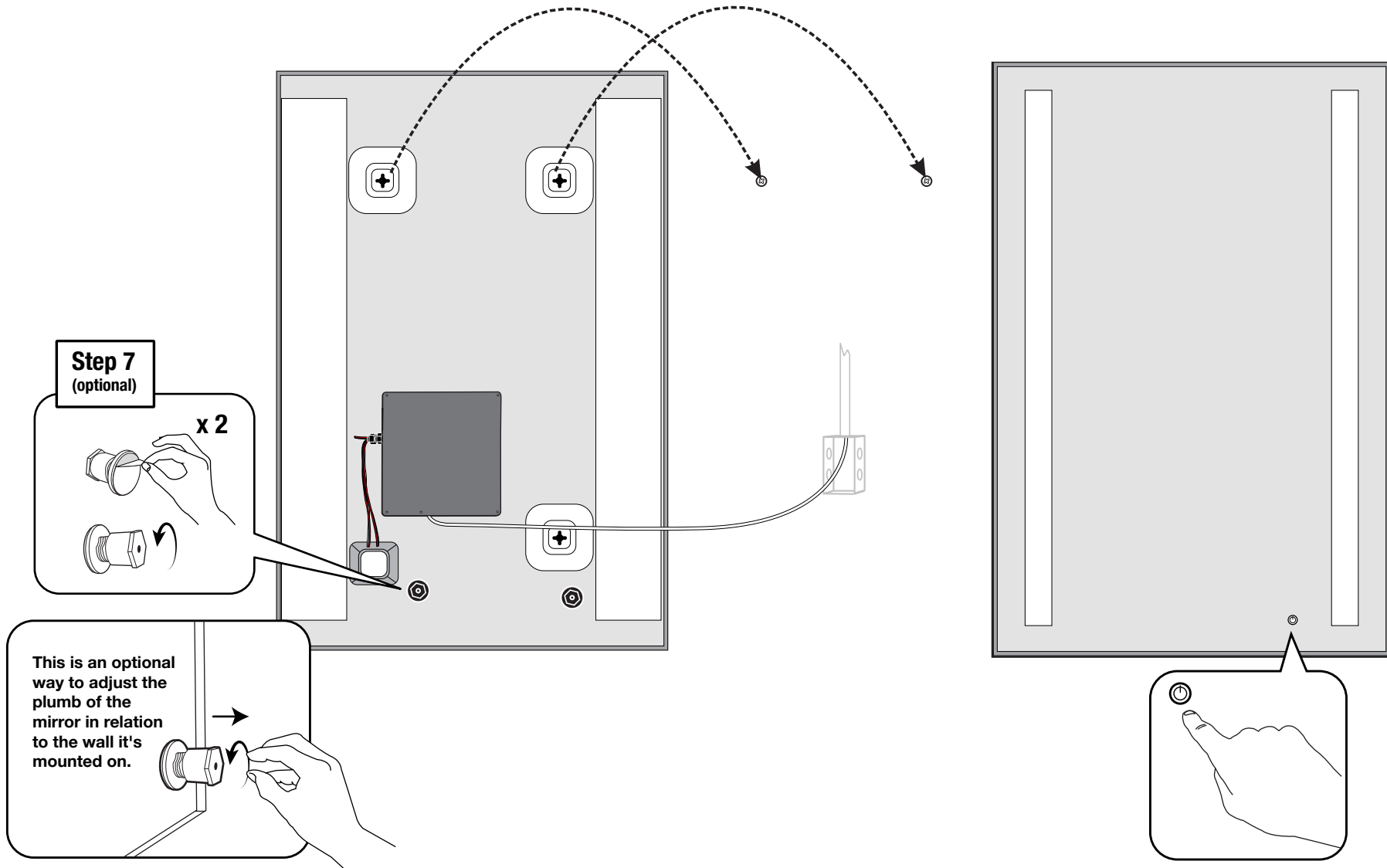
**Step 6**

**Connect Wire**

**Clamp Wire**

Electrical Box with installer-supplied, approved wire (at least 2 feet long\*).  
*\*Recommended*

**Vertical Mounting Instructions**



**Horizontal Mounting Instructions**

