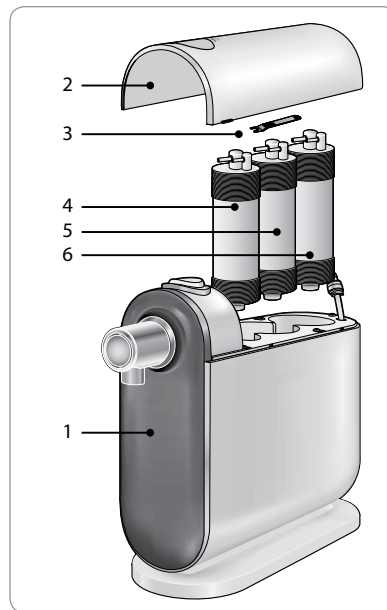




Water Filtration System – Above Counter Installation







PRODUCT COMPONENTS

Front



- 1 **Main body**
- 2 **Top cover**
- 3 **Connection tool**
- 4 **Carbon Block filter (HF-33)**
- 5 **Nanotrap filter (HF-32)**
- 6 **Composite Plus filter (HF-31)**

Accessories

General Accessories	 Owner's Manual	 1/4" tubing (White)	
Faucet Diverter (included)	 Diverter	 Diverter adapter (Type 1)	 Diverter adapter (Type 2)
Alternative Installation (not included)	T-valve for under counter water supply installation	 T-valve fitting (available in 1/2" or 3/8")	

WATER FILTRATION PROCESS

The 3-stage H2O+ Cypress H630 water filtration system

1 COMPOSITE PLUS FILTER (HF-31)

This 2-step filter reduces particulate materials such as sand, rust, and fine particles from the water supply. This first filter also acts as a pre-filter protecting the 2 following filter systems.

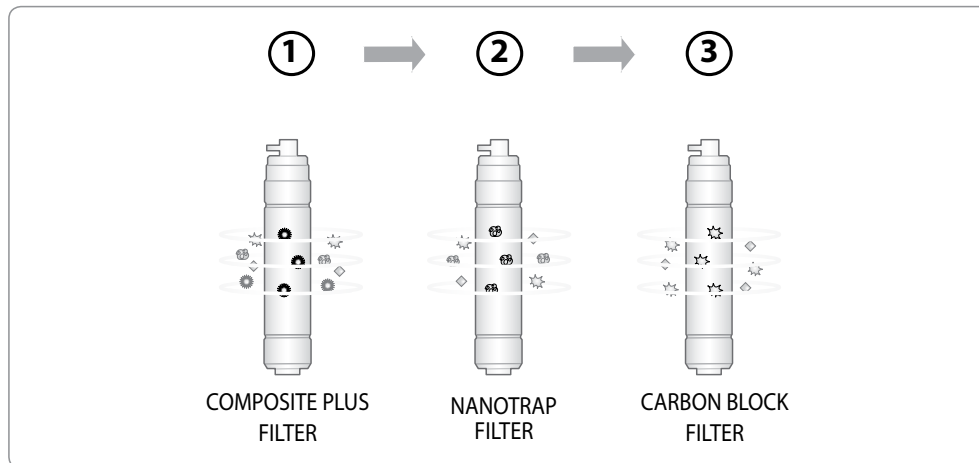
2 NANOTRAP FILTER (HF-32)

This specialized filter reduces turbidity and additional particulate material.

3 CARBON BLOCK FILTER (HF-33)

As the final stage in the filtration process, the Carbon Block filter reduces particulates, odors, and water contaminants such as chlorine and volatile organic compounds, improving the taste of the dispensed water.

* See performance data sheet for certified claims

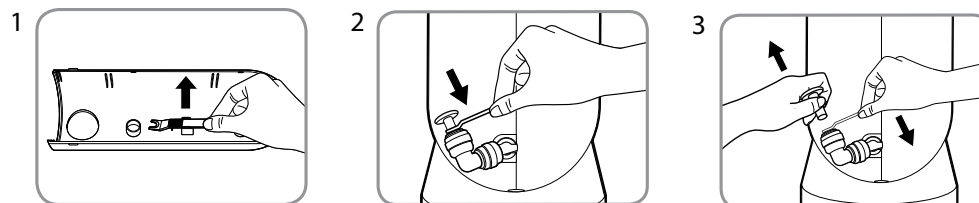


READ BEFORE YOU INSTALL THIS PRODUCT

The following instructions describe how to remove the gray plug from the elbow joint that is connected at the back of your Cypress water filtration unit.

NOTE: Use this technique when changing the filters as well.

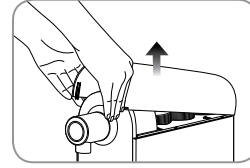
1. Remove the Quick Connect tool from the underside of the Top Cover
2. Between the elbow and the gray plug is a thin white collar. Using the Quick Connect tool, push down on the ring toward the elbow
3. At the same time, pull the gray plug out in the opposite direction.



INSTALLATION

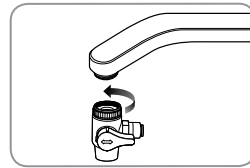
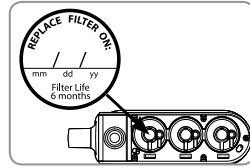
Prior to installation.

- a) Remove top cover with both hands.
- b) Write filter replacement date on filter change sticker found on top of each filter. **Note:** Carbon Block (HF-33) and Composite Plus (HF-31) filters are 6 month filter life & Nanotrap (HF-32) filter is 1 year filter life.



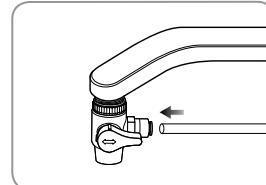
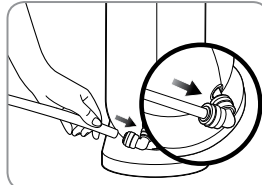
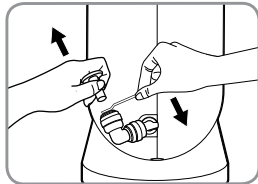
Faucet Diverter Type (included)

1. Installing the faucet diverter.
 - a) Unscrew original aerator (faucet spout tip) from your water faucet.
 - b) Connect diverter (with rubber washer) to water faucet by hand tightening using any of the provided diverter adapters for best fit. If needed, use a wrench (spanner) or pliers but be careful not to over tighten the connection.



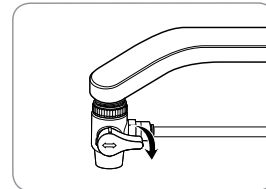
2. Installing the tubing.

- a) Remove the gray water inlet plug on back of unit (see page 4).
- b) Connect one end of the 1/4" tubing (white) to the water inlet on the water filter unit.
- c) Connect other end of hose to faucet diverter.



Note: be sure to push tubing firmly all the way into the quick-connectors & use Connection Tool as needed

3. First, turn on cold water faucet. Then, open the faucet diverter switch to supply main water.

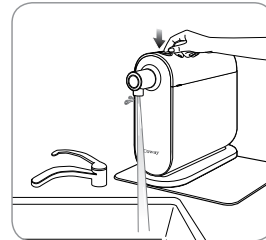


4. Press the button on top of the unit to dispense water (into your sink) and **let it run for 10 minutes to flush the system and activate the filters.**

⚠ The initial flushed water contains carbon powder and air from the filter. During flushing of filter, sound will be heard as carbon powder and air is flushed out. This is not a malfunction, please use the product as usual after flushing the filter.

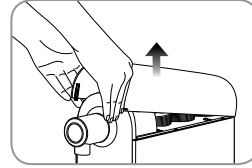
⚠ **Make sure to flush water continuously for at least 10 minutes before initial use.**

⚠ **It is normal for the dispensed water to have significant white air bubbles suspended in the water for the first few days of use. This will go away over time as the air is flushed out of the system.**



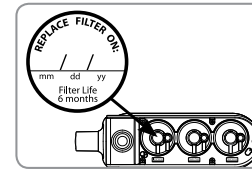
INSTALLATION (cont.)

Alternative Installation T-valve Type (for under-the-counter water supply direct connection)



Prior to installation.

- Remove top cover with both hands.
- Write filter replacement date on filter change sticker found on top of each filter. **Note:** Carbon Block (HF-33) and Composite Plus (HF-31) filters are 6 month filter life & Nanotrap (HF-32) filter is 1 year filter life.

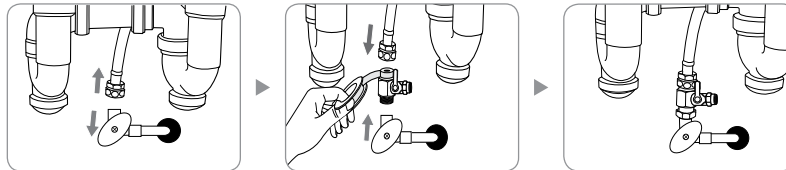


1. Installing the T-valve type water supply fitting.

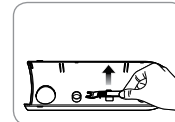
- First, turn off hot and cold water supply under the sink at the wall. Then, open (turn on) the faucets to drain water from the sink's water line.
- Disconnect cold water supply line from supply valve under sink at wall.

⚠ The water supply T-Valve must be connected to the cold water supply only. Never connect to hot water supply!

- Connect the bottom of the T-valve to the cold water supply at the wall and connect faucet water supply hose to top of T-valve as shown below. Use teflon tape (plumbers tape) on the threads if needed for a watertight seal.

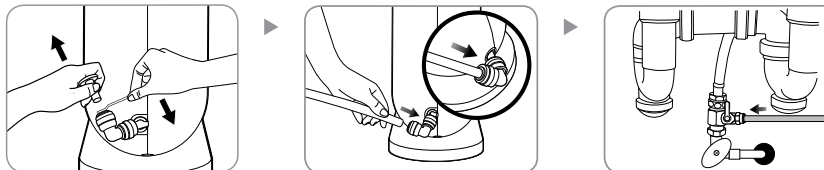


☀ Tips Use **Connection Tool** for all "quick-connect" water tube connections. To use: simply push down with the tool on the connection point as you pull out tubing



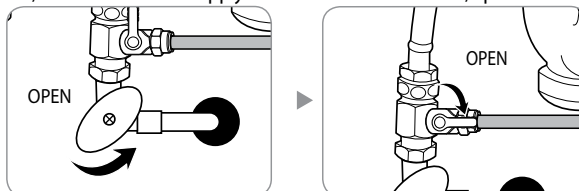
2. Installing the tubing.

- Remove the gray water inlet plug (see Page 4 for more details).
- Connect one end of the 1/4" tubing (white) to the water inlet on the water filter unit.
- Run the other end of the white hose under the sink and connect it to the open end of the installed T-valve.



☀ Tips **Note:** be sure to push tubing firmly all the way into the quick-connectors & use Connection Tool as needed

3. First, turn on cold water supply line under sink at wall. Then, open the T-valve switch to supply main water.



INSTALLATION (cont.) | HOW TO USE

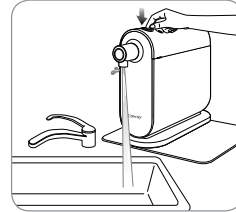
4. After turning on water supply, check all connections for any leaks. Wait 5 minutes and check once more for any signs of leaking prior to proceeding to next step.

⚠ Failure to properly install or check for leaks may cause damage to your property and Brondell will not be responsible for any damages.

5. Press the button on top of the unit to dispense water (into your sink) and **let it run for 10 minutes to flush the system and activate the filters.**

⚠ The initial flushed water contains carbon powder and air from the filter. During flushing of filter, sound will be heard as carbon powder and air is flushed out. This is not a malfunction, please use the product as usual after flushing the filter.

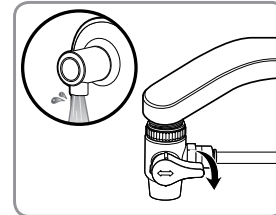
⚠ **Make sure to flush water continuously for at least 10 minutes before initial use.**



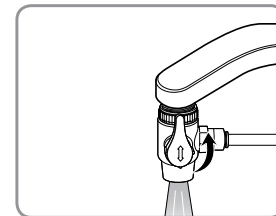
HOW TO USE

For Diverter Valve Type

1. Turn the valve on the faucet diverter to the side to route the flow of water to the filter unit then turn on cold water.



2. Turn the valve up to use faucet as usual.

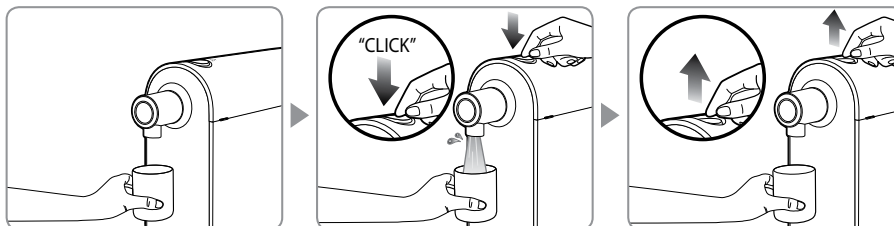


Tips

For the under-counter T-Valve connection type, water should be diverted permanently to the unit once you turn the valve to the "on" position.

To Drink the Filtered Water

1. Place a cup under the water spout.
2. Press the button on top of the unit until a "CLICK" sound is heard. Once clicked, it will provide continuous water flow.
3. To stop the water flow, press the button again to return it to the initial position



TROUBLESHOOTING

In most cases, problems with your Brondell H2O+ water filtration system can be resolved with a little troubleshooting by checking each of the items below. If you cannot resolve the problem you are having after troubleshooting, please call Brondell customer service toll free: 888-542-3355 or email us at support@brondell.com

Problem	Check	Possible solutions
No water comes out.	• Is there a suspension of water supply or is the faucet diverter/T-valve closed?	Open the supply valve and/or the faucet diverter/T-valve.
	• Are the filters not being regularly replaced at the specified times?	Replace the filters.
	• It looks like the faucet is out of order.	Consult a plumber.
The button on top of unit is not working	• Is the water pressure high (over 120 psi)?	Consult a plumber.
Condensation appears on the product main body.	• Is the temperature or humidity too high?	This is natural. Continue to use as normal.
Low volume of filtered water.	• Is it time to replace the filters?	Replace the filters.
	• Is the water supply valve closed?	Open the water supply valve.
	• The temperature of the water supply dropped dramatically.	If the water temperature decreases, the amount of filtered water decreases.
Poor aftertaste or bad smell from the water.	• How often do you use the product? If the product is not in use for a long time, the filter might be dried out.	Flush the filters for 10 minutes. If the water still smells or tastes bad, replace the filters.
Water is not clear.	• Check filters for damage.	Replace the filters. Contact customer support for further information if needed
Water leakage at diverter.	• Did you push the tubing all the way into the connectors?	Tubing needs to be pushed completely onto the connectors. Tighten the nuts firmly.
	• Did you tighten the nuts firmly?	
	• Check whether the connections at faucet and/or T-valve are loose.	Tighten all connections between faucet and diverter.
	• Are you using an old faucet?	Turn off the main water valve, then check for leakage. Change the faucet if leakage continues to occur.
	• Check whether the internal seal is damaged.	Contact customer support to order new diverter valve.