

OPERATING MANUAL

ANTUS | QUADRO | SIRIO | VEGA

**! IMPORTANT FOR END-USERS DO NOT THROW AWAY !
READ AND FOLLOW INCLUDED INSTALLATION GUIDE BEFORE USE**

ONCE INSTALLED:

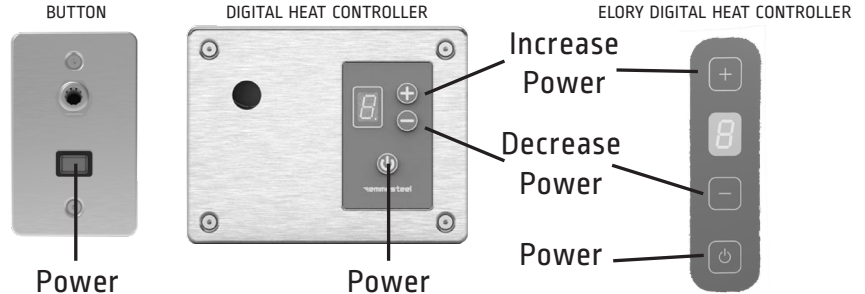
Turn on the unit by pressing the on/off button at the bottom of the Digital Heat Controller (DHC), or the red toggle button found on the Q2016 and S2121

You should start to feel some heat after a few minutes

Units typically take 10-15 minutes to reach its top temperature

Leave unit on for at least 1-2 hours at maximum temperature to dry and warm your towels

These units are safe to leave on 24/7



DIGITAL HEAT CONTROLLER OPERATION:

When the Unit is in the off position, there will be a ' - ' on the digital read out.

While the DHC is initiating you will see a line ' - ' on the display that will spin before displaying a number: there are 9 total settings to choose from - 9 is running the unit at its maximum temperature. Every setting below is a 5% decrease in power.

For additional control a separate timer can be installed to allow your unit to operate during your preferred window of time: Leave the Digital Heat Controller/Switch in the 'on' position and program your timer - The timer will turn the unit on/off and the digital heat controller will always turn on to the last temperature setting.

HOW TO FOLD YOUR TOWELS?

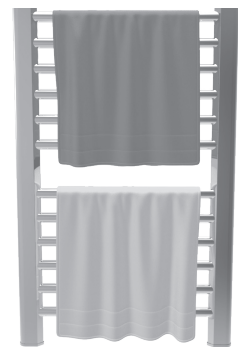
Fold your towel in half length-wise or width-wise and then drape over the top bar. For best results, ensure towel covers all bars with minimal overhang. Note - for larger towels, they may need to be folded in thirds to fit.

HOW TO CLEAN YOUR HEATED TOWEL RACK?

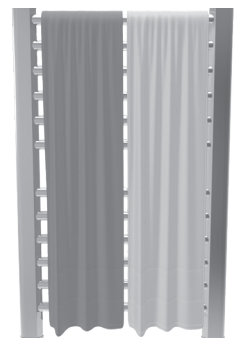
For best results, turn off unit and wait for it to return to room temperature, then wet a soft cloth with warm water and mild soap and wipe surface. Dry off with a soft, dry towel. Never use an abrasive cleaning pad or product as this could scratch the finish or paint. Stainless steel cleaner should not be used on any painted finish. Stainless steel cleaners can also be used on any of the stainless finishes.

MORE INFORMATION:

Visit our FAQ page at: ambaproducts.com/faqs/



WIDTH FOLD



LENGTH FOLD