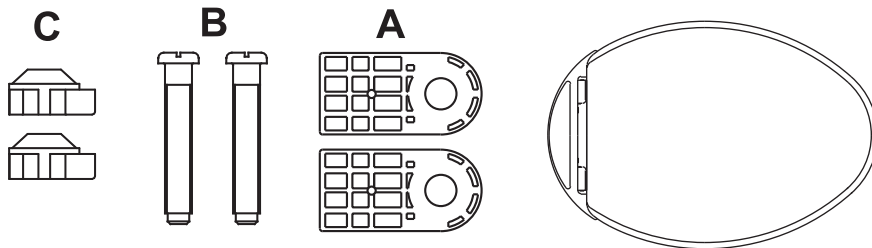


# TOTO®

Oval SoftClose® Toilet Seat

# Installation Manual

0GU509-1



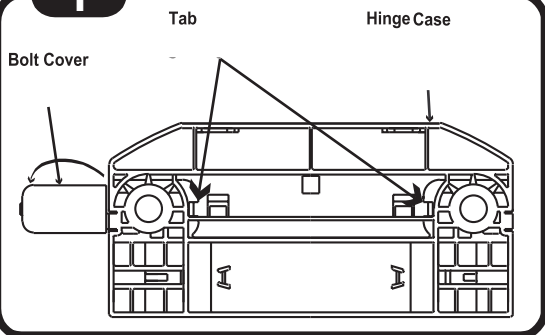
#### Contents:

- 1 Oval SoftClose® Toilet Seat
- 2 Rubber Seat Stoppers (A)
- 2 Plastic Bolts (B)
- 2 Plastic Nuts (C)

Required Tools: Flat Head  
Screwdriver

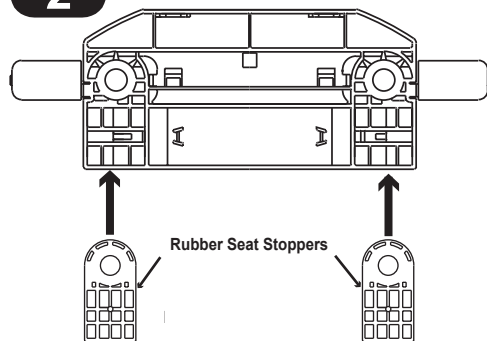
## Installation

1

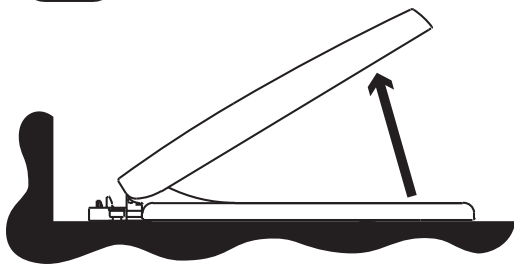


Look on bottom of Hinge Case. Push tab with fingernail or pen to open Bolt Covers.

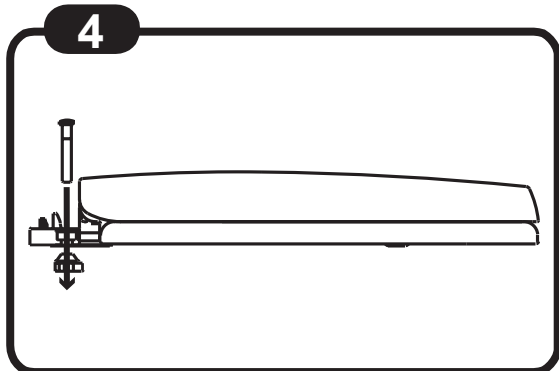
2



3



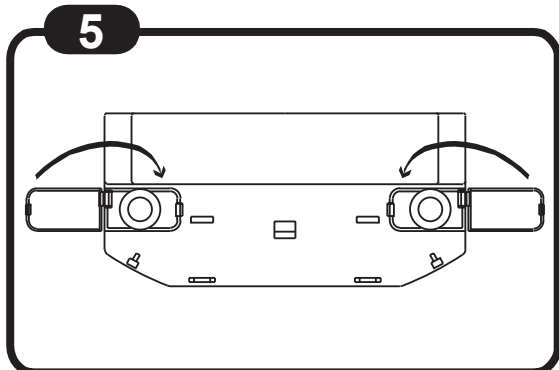
4



Insert Plastic Bolt (B) and tighten Plastic Nut (C) on underside of toilet.

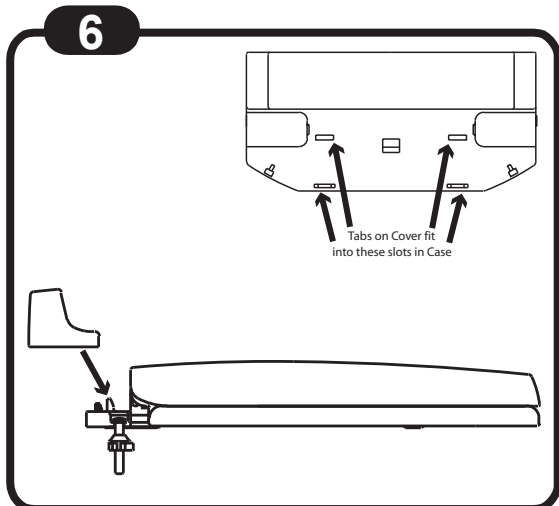
## Installation

5



Close Bolt Covers. Make sure they are flat with the Hing Case surface.

6



Install rear Hinge Cover by fitting the tabs on the rear Cover into the slits on the Hing Case.