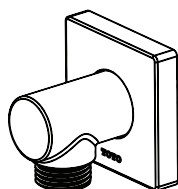
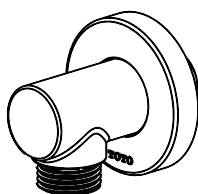
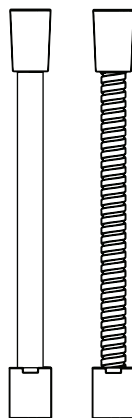


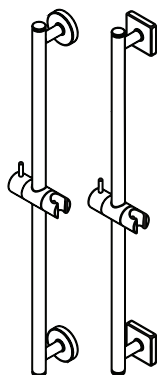
Handshower Accessories



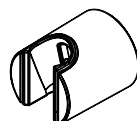
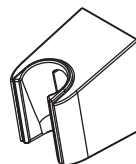
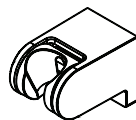
TBW01014U
TBW02013U



TBW01027U
TBW01026U



TBW01016U
TBW02012U



TBW02019U
TBW02014U
TBW01025U

ENGLISH

TABLE OF CONTENTS

Thanks for Choosing TOTO!.....2

Care and Cleaning.....2

Warnings.....2

Before Installation.....2

Common Tools Needed.....3

Installation Procedure.....3-5

Warranty.....6

Rough-In Dimensions.....22-23

THANKS FOR CHOOSING TOTO!

The mission of TOTO is to provide the world with healthy, hygienic and more comfortable lifestyles. We design every product with the balance of form and function as a guiding principle. Congratulations on your choice.

CARE & CLEANING

Your new handshower accessories are designed for years of trouble-free performance. Keep them looking new by cleaning them periodically with mild soap, rinsing thoroughly with warm water and drying with a clean, soft cloth. Do not use abrasive cleaners, steel wool or harsh chemicals, as these will dull the finish. Failure to follow these instructions may void your warranty.

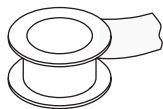
WARNINGS

- For safe operation of the handshower hose and wall outlet, please observe the following:
- Recommended operating pressure:
 - Minimum pressure.....20 psi (0.14 MPa), dynamic
 - Maximum pressure.....80 psi (0.55 MPa), static
 - Hot water supply temperature must not exceed 160°F (71°C).
 - Do not use steam for hot water supply.
 - Do not use the product at an ambient temperature below 32°F (0°C).
 - Do not use the slide bar as a handrail or grab bar. Otherwise, this could result in property damage or personal injury.

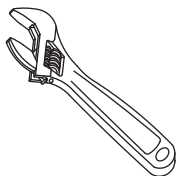
BEFORE INSTALLATION

- Observe all local plumbing codes.
- Make sure the water supply is shut off.
- Read these instructions carefully to ensure proper installation.
- TOTO reserves the right to update product design without notice.
- Handshower accessories for use with TOTO handshower products.

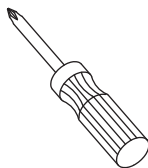
COMMON TOOLS NEEDED



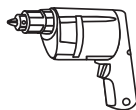
Pipe Tape



Adjustable Wrench



Screwdriver



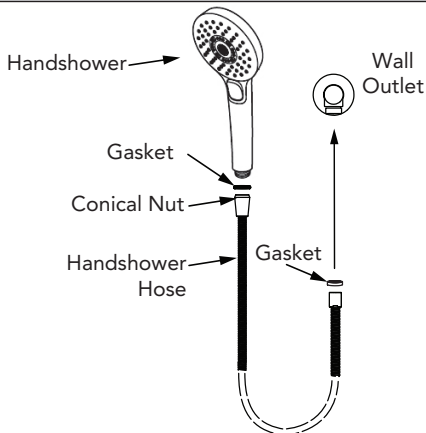
Drill



1/4" or 3/32"
Drill Bit

INSTALLATION PROCEDURE - TBW01026U, TBW01027U

Handshower Hose



INSTALLATION PROCEDURE - TBW02013U, TBW01014U

Wall Outlet

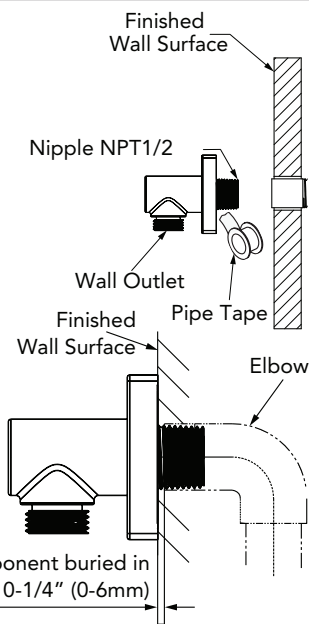
NOTE: The hole for the nipple should not be larger than 1" (25mm) in diameter.

Seal wall opening around 1/2" nipple with caulk.

Wrap the threads of the nipple with pipe tape.

Thread the wall outlet on by hand until the outlet points straight down and has made contact with the wall.

A screwdriver may be inserted into the outlet hole to provide extra leverage while tightening.

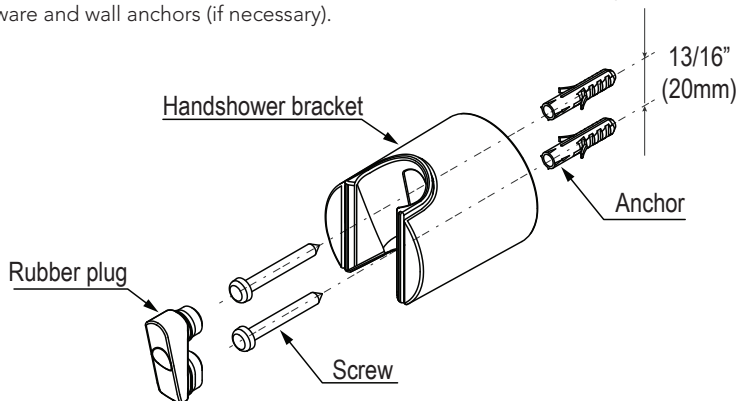


The distance of the component buried in wall from the wall surface is 0-1/4" (0-6mm)

INSTALLATION PROCEDURE - TBW02014U, TBW01025U

Handshower Bracket

Attach the handshower bracket to the wall in the desired location using the included hardware and wall anchors (if necessary).

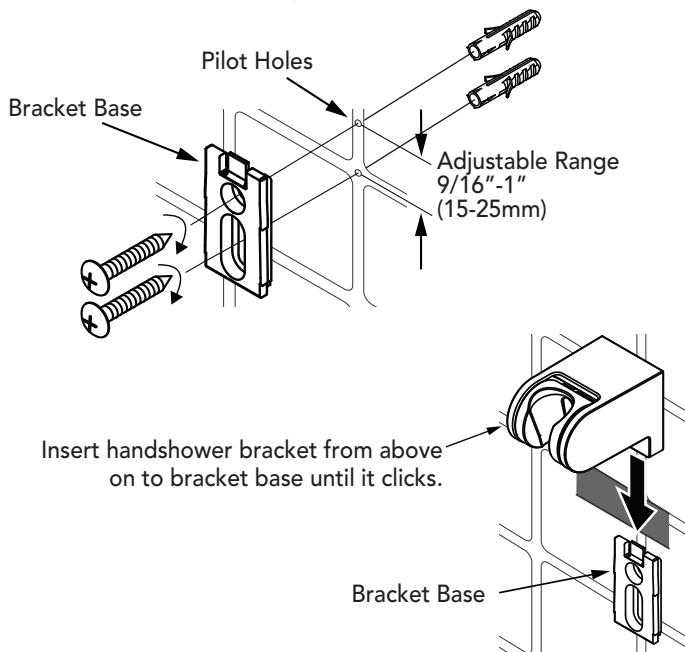


NOTE: For tile or concrete wall installation, drill 1/4" holes for insertion of anchors. For installation directly to a wooden stud or stringer, drill 3/32" pilot holes. Anchors should not be used if attaching to a wall stud. Reinforce when mounting on hollow wall.

INSTALLATION PROCEDURE - TBW02019U

Handshower Bracket

Attach the handshower bracket to the wall in the desired location using the included hardware and wall anchors (if necessary).



NOTE: For hollow wall and/or tile or concrete wall installation, drill 1/4" holes for insertion of anchors. For installation directly to a wooden stud or stringer, drill 3/32" pilot holes. Anchors should not be used if attaching to a wall stud. Reinforce when mounting on hollow wall.

INSTALLATION PROCEDURE - TBW01016U, TBW02012U

Slide Bar

1) For tile or concrete wall installation, drill 1/4" holes against the included paper template (not shown) for insertion of wall anchors. For installation directly to a wooden stud or stinger, drill (1/8" -5/32") pilot holes . Anchors should not be used if attaching to a wall stud.

NOTE: Reinforce when mounting on a hollow wall.

NOTE: Escutcheon (with "TOTO" marking) is installed on the lower base bracket . Make sure the bracket post hole is in the vertical direction.

- 2) Put the bracket post through the base bracket and then fix the base bracket onto the wall with tapping screws then put the Escutcheon on the base bracket.
- 3) Fix the lower base bracket properly by the same method.
- 4) Insert bracket post head into fixed rod and tighten set screw.

Example: TBW01016* series slide bar

