



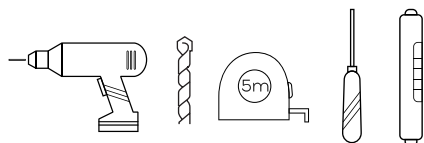
INSTALLATION INSTRUCTIONS



*Ergo*SlideBar

4001R-SSP
4001R-SSB
4001R-ORB
4001L-SSP
4001L-SSB
4001L-ORB

TOOLS REQUIRED FOR INSTALLATION



Electric Drill
1/8" wood or metal drill bit
5/16" masonry drill bit
Tape measure
Screwdriver
Level

IMPORTANT

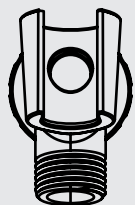
Check local code for proper placement of ErgoSlideBar to meet requirement such as ADA or ANSI 117.1 Consumer Safety Requirements.

ERGOSLIDEBAR CAN BE MOUNTED THROUGH SHOWER WALL AND SCREWED DIRECTLY TO WOOD OR METAL STUD WHEN APPLICABLE.

PARTS INCLUDED

- Stainless steel rail
- 3 Function handheld with flow control
- 72" Shower hose
- Installation manual
- Shower arm mount with hand held holder
- Hand held slider

SHOWER ARM MOUNT INSTALLATION



Attach shower arm mount to your existing shower arm using supplied washer. Shower arm NOT INCLUDED.

INSTALLATION

STEP 1

Position mounting flanges and mark hole locations.

For wood or solid backing applications drill 1/8" pilot holes through shower wall into wood or metal stud.

NOTE: If wall is tiled, drill a 1/8" pilot hole through tile then change to the a 5/16" diameter masonry tile drill bit.

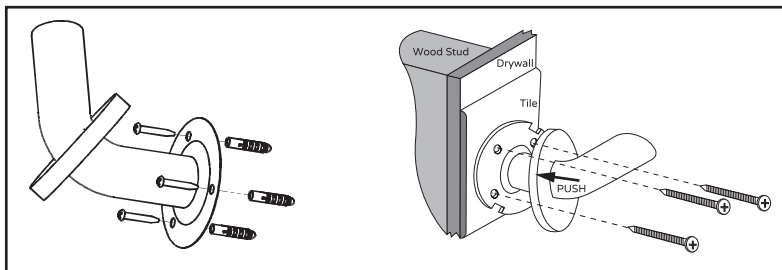
STEP 2

Install screws through mounting flange and directly into wood/metal stud or bracing. Use masonry anchors if necessary.

STEP 3

Once the ErgoSlideBar is securely fastened to wall, align cover plate locking tabs with slots in flange. Push cover against mounting until it locks.

DETAIL MOUNTING INSTALLATION



PRODUCT DIMENSIONS

