



4th-5th Gen Ram 2500-3500 Crew cab and Mega Cab Rear window panel installation

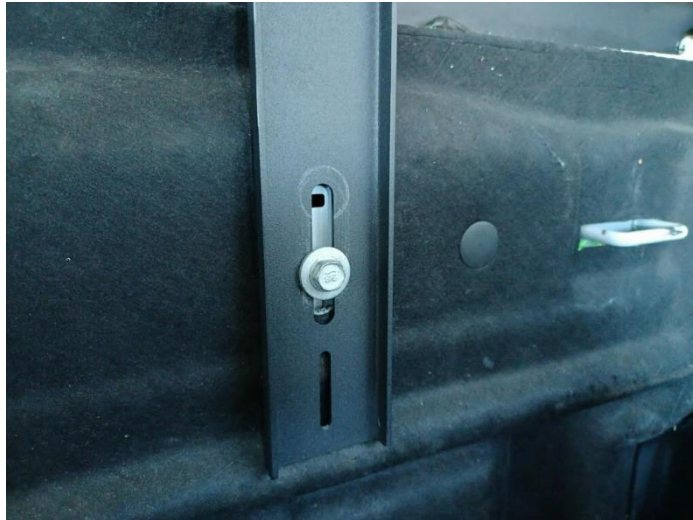
CREW CAB

Rear seat folding modification must be done before installation!

Follow instructions in this video

<https://www.youtube.com/watch?v=0FE2rGWTk6o>

- Install bottom brackets with existing bolts on both sides of the rear fire wall. Snug down but do not tighten fully.



- Remove coat hooks with a t-20 torx bit.



- Install window panel into lower brackets with the provided $\frac{3}{4}$ " $\frac{1}{4}$ -20 bolts.
- Install top brackets loosely with the existing t-20 torx bolt that was with the coat hooks. (the other panel you see to the left of the top bracket is the NH overland headliner molle panel)



- Bolt window panel to top brackets using the remaining 1" $\frac{1}{4}$ -20 bolts provided with the hardware kit.
 - Straighten panel and tighten all bolts.
- Enjoy your new window panel and send pictures to josh@ickyconcepts.com or @icky_concepts_llc on Instagram

Mega Cab/Single Cab

- The only difference between the crew cab and Mega/single cab installation is the bottom brackets.
- Remove the “grocery bag hooks” with a T-25 Torx bit.



- Install Bottom brackets with existing T-25 bolt.



- Remove coat hooks with a t-20 torx bit.



- Install window panel into lower brackets with the provided $\frac{3}{4}$ " $\frac{1}{4}$ -20 bolts.
- Install top brackets loosely with the existing t-20 torx bolt that was with the coat hooks. (the other panel you see to the left of the top bracket is the NH overland headliner molle panel)



- Bolt window panel to top brackets using the remaining 1" $\frac{1}{4}$ -20 bolts provided with the hardware kit.
- Straighten panel and tighten all bolts.

Enjoy your new window panel and send pictures to
josh@ickyconcepts.com or @icky_concepts_llc on Instagram