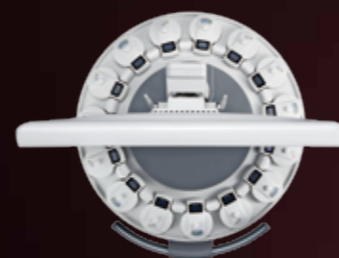




Monitoring with More Possibilities

Play as a central monitoring system, FTS-6 is also able to seamlessly connects EDAN bedside monitors including F2, F3, F6, F9 and F9 Express. Up to 12 monitoring windows can be displayed simultaneously.

- Parameters
FHR1, FHR2, FHR3, TOCO, AFM
- Standard Configuration
4 US transducers, 4 TOCO transducers
- Maximum Configuration
8 US transducers, 7 TOCO transducers



FTS-6
Central Monitoring System

About Edan

Edan is a healthcare company dedicated to improving the human condition around the world by delivering value-driven, innovative and high-quality medical products and services. For over 20 years, Edan has been pioneering a comprehensive line of medical solutions that address a broad range of healthcare practices including:

- Diagnostic ECG
- Patient Monitoring
- OB/GYN
- Ultrasound Imaging
- Point-of-Care Testing
- *In-Vitro* Diagnostics
- Veterinary

Healthcare professionals around the world depend on Edan's breakthrough medical technologies and outstanding customer support.



U.S. and Canada inquiries:
EDAN Diagnostics, Inc. | 9833 Pacific Heights Blvd., Suite E/F
San Diego, CA 92121-4707 | +1.858.750.3066
www.edandiagnostics.com | edan-info@edandiagnostics.com

Inquiries outside of the U.S. and Canada:
Edan Instruments, Inc. | No.15 Jinhui Rd., Jinsha Community,
Kengzi Subdistrict, Pingshan District, Shenzhen | 518122 P.R. China
+86.755.26898326 | www.edan.com.cn | info@edan.com.cn

© 2019 Edan Instruments, Inc. All rights reserved. Features and specifications are subject to change without prior notice. No reproduction, copy or transmission may be made without written permission. Not all products or features are available in all countries, contact Edan for local availability.



ENG-OB&GYN-FTS-6-V1.4-20190228

Transform the Way You Work

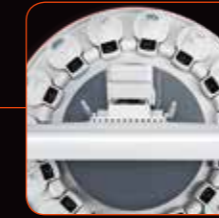
FTS-6

Central Monitoring System





360°rotating transducer holder provides full convenience for transducer pick & place, which allows free positioning of each wireless transducer.



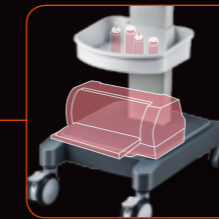
All-in-one PC with touchable screen provides a platform for surveillance software system which works as one central monitoring system as well as one CTG monitoring display with informative clinical messages.



Down lit pull-out keyboard is available for data entry and reports generation.



The spacious design allows extra space for accessories and external printer.



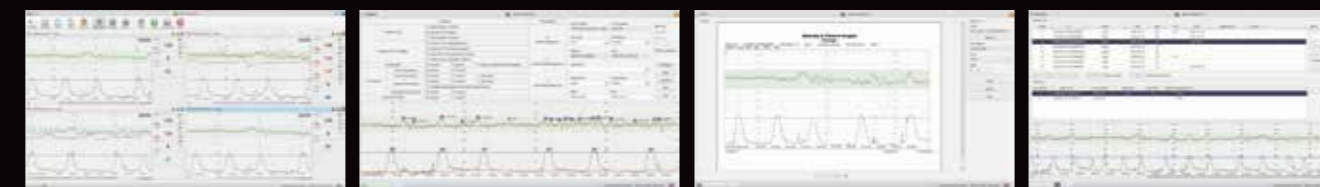
From Individual Patient Care to Centralized Patient Management

With the central monitoring system, the nurse could keep track of all the patients in real time, saving time from frequently checking by the bedside, hence freeing nurses from busy works. Being part of the FTS-6, the powerful central monitoring system not only allows you to manage all the patient data in real time, but also able to record, analyze, save, print and review patient data.

- Multiple Beds Monitoring
- CTG & NICHD Analysis
- Support HL7 Connection to HIS
- Monitoring for Twins and Triplet
- Real Time Waveform and Digits Display
- Transducer Auto Recognition and Paring

Biggest Display, Maximum Cares

The FTS-6 multi-display mode allows caretakers to work through with patients easier and faster. Meanwhile, the nationally standardized NICHD analysis program together with CTG analysis are preprogrammed in the system. Flexible report edit function fits in user's working experiences and preferences.



Monitoring information display

NICHD analysis program

Report edit function

Patient data archive

Seamless Monitoring Care for the Details

Changes in the work distribution, improvement of the work environment, efficient use of nursing personnel and upgrades of monitoring equipment are the several objectives addressed by this new centralized monitoring system. Traditional care practices and workflows in the ward environment, whereby a nurse visits pregnant ladies occasionally to check their measurements on the spot. In clinics environment, pregnant ladies are not usually connected to any technology that supports a continuous collection of patient data and alerts staff to adverse trends or sudden events. FTS-6 establishes the value of continuous monitoring in helping increase patient care.