

## DC-60

Diagnostic Ultrasound System

# Dedicated care for ECHO!

## X-Insight



# X-Insight

## An insightful solution to envision more.

Mindray's brand-new solution is an excellent fusion of continuous customer insights into clinical needs, combined with continually evolving cutting-edge ultrasound technologies.


Full of vitality, with the goal of insight into the future and pursuit of the infinity, it is constantly improving with increased scalability.


## High efficiency with precision imaging

As a dedicated system for cardiovascular application, DC-60 ECHO with X-Insight devotes to provide a comprehensive solution to help you manage daily cardiovascular clinical practice with ease and certainty.

Based on the deep insights of customer needs, the DC-60 ECHO with X-Insight is designed to deliver high efficiency with precision imaging, which is empowered by eXpress Clarity, eXceptional Intelligence and eXceeding Experience :

 eXpress Clarity

 eXceptional Intelligence

 eXceeding Experience



# eXpress Clarity

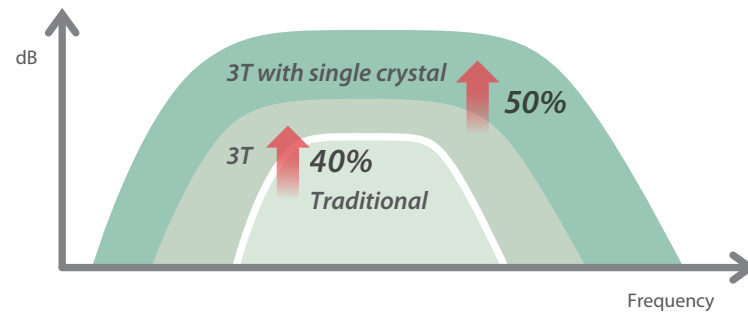
More clarity at hand

To achieve excellent images with minimum effort is your highest priority and our endless pursuit. With continuous innovation in imaging and transducer technologies, the DC-60 ECHO with X-Insight delivers immediate clarity with 'Touch and Bingo' to allow you to get the optimum images that you need immediately, as soon as the transducer touches the body.

## 'Touch and Bingo' with evolutional transducers

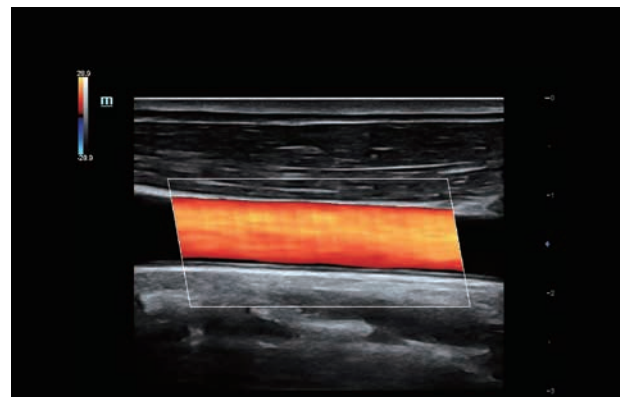
### Single crystal transducers with 3T technology

Combining with Mindray's unique 3T technology (Triple-matching layers, Total-cut design, Thermal control), the brand-new single crystal transducer provides a wider bandwidth to simultaneously offer better penetration and higher resolution, resulting in an optimum scanning solution in primary cardiovascular application.



### ComboWave transducer with 3T technology

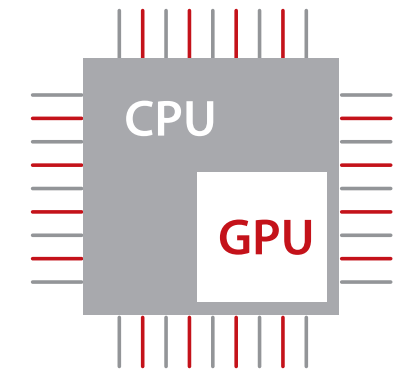
Compared with traditional transducers, ComboWave transducers utilize a new type of composite piezoelectric material to dramatically optimize the acoustic spectrum and reduce acoustic impedance. Further integrated with Mindray unique 3T technology, the ComboWave linear transducers allow you to experience outstanding performance with extreme image resolution and uniformity in thyroid, breast, vascular, and more.



Caroid Color Image by ComboWave Transducer

## Thunder-speed imaging powered by X-Engine

The new X-Engine utilizes the evolutionary integration of GPU and CPU to enable multi-core parallel processing for fast imaging. With the advanced imaging engine, the imaging processing speed is accelerated three or four times, resulting in extremely fast imaging for 3D/4D and other applications.



Processing Speed 3X Plus

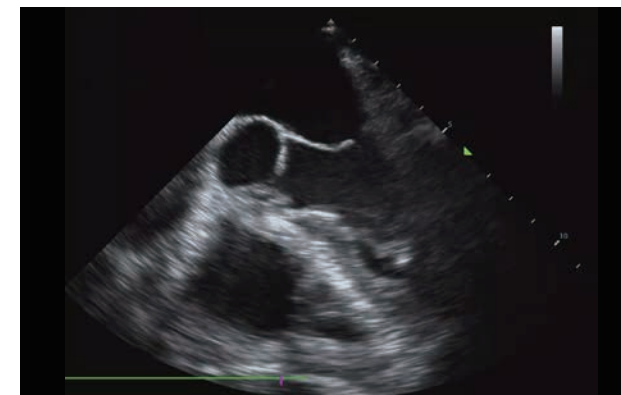
## Ultra-Speed data transmission with security guarantee

By the optional integration of Solid-State Disk(SSD), DC-60 ECHO with X-Insight provides the ultra-speed data transmission capability to accelerate the system operational speed, for instance, faster imaging, quicker boot-up or wake-up. And the SSD is able to extend the data life-time of ultrasound system, which enhances the protection of patient data and privacy guarantee.



Transmission speed 5X Plus

## Proven advanced applications:



5 Chambers Image by TEE Transducer

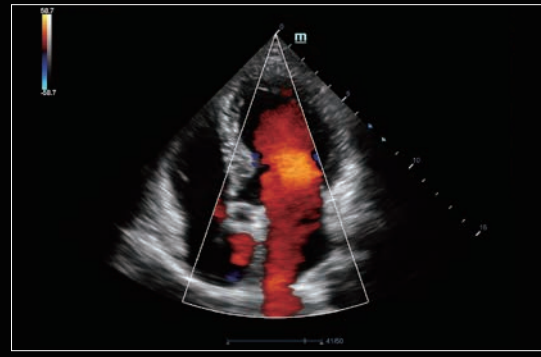


TEE transducer

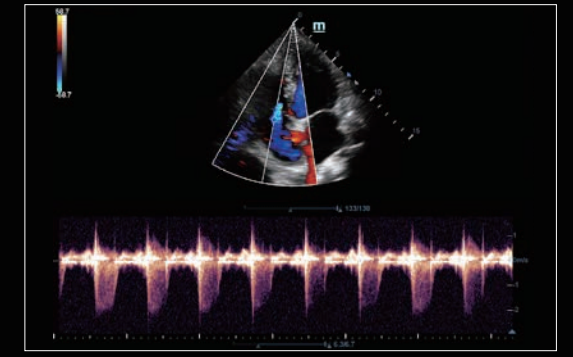




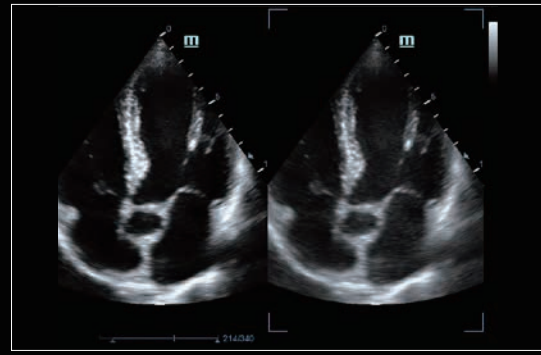
# Image gallery



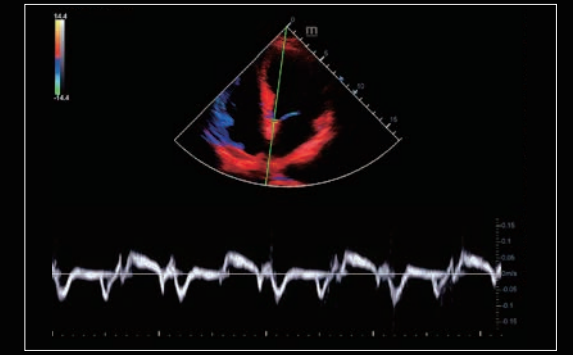
A4C Color



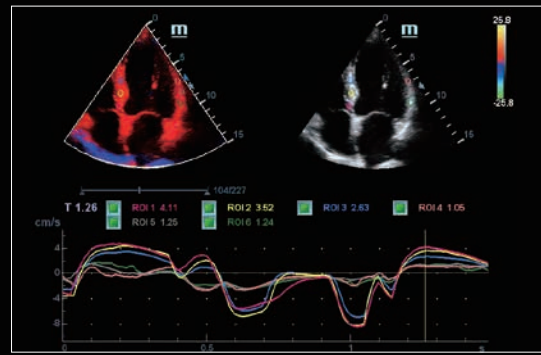
Tricuspid AR in CW



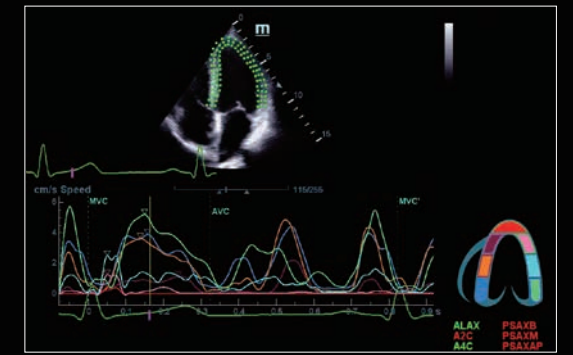
Echo Boost



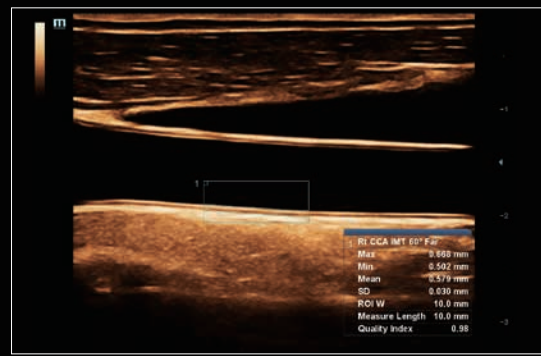
TVD



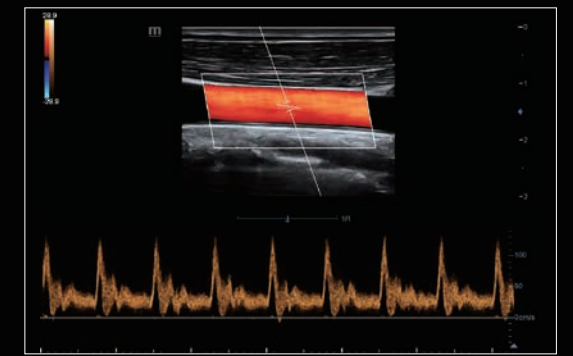
Cardiac TDI QA



Cardiac TT QA



Common Carotid Artery IMT



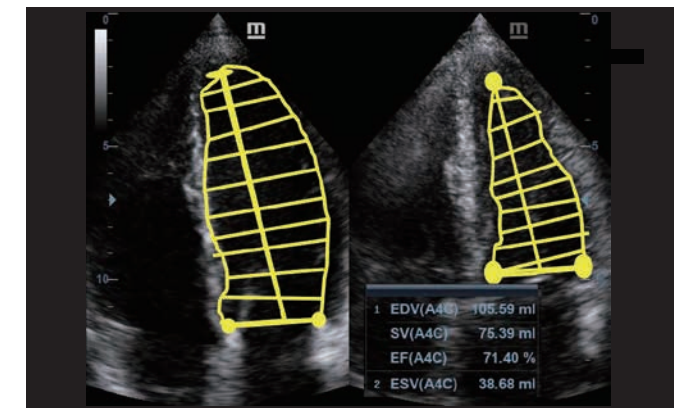
Common Carotid Artery PW





## Auto LV

Auto LV is a smart measure method and it offers Auto trace and calculation for Left Ventricle function with easy manual correction.

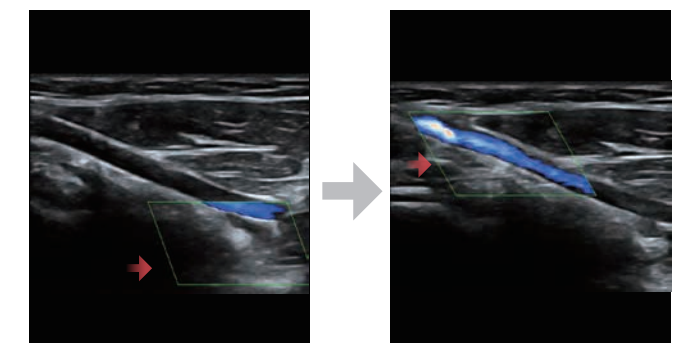


Auto LV

## Smart Track

More simplicity with auto image optimization

Smart Track provides fast and intelligent optimization for vascular imaging with simply **one-touch operation**. It can optimize Color, Power and PW spectrum by **self-tracking** and reduce time-consuming steps. Therefore the vascular exam workflow is simplified with an optimal view.

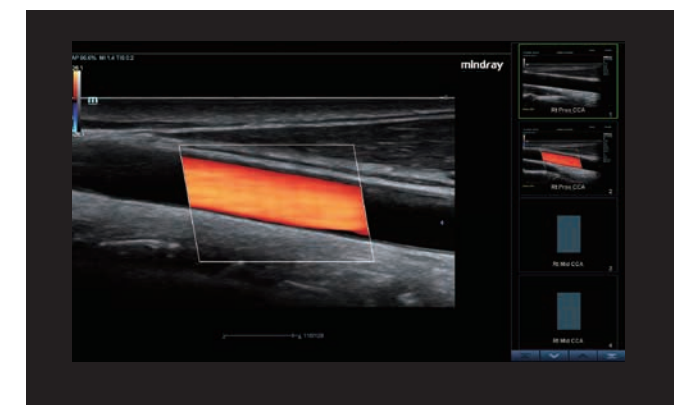


Smart Track

## iWorks

More consistency with exam protocol

iWorks takes advantage of the inbuilt standard scan protocols for more consistency and **reduces the exam time by up to 50%**. The highly flexible and powerful feature is further enhanced with user-defined capabilities.



iWorks

# eXceptional Intelligence

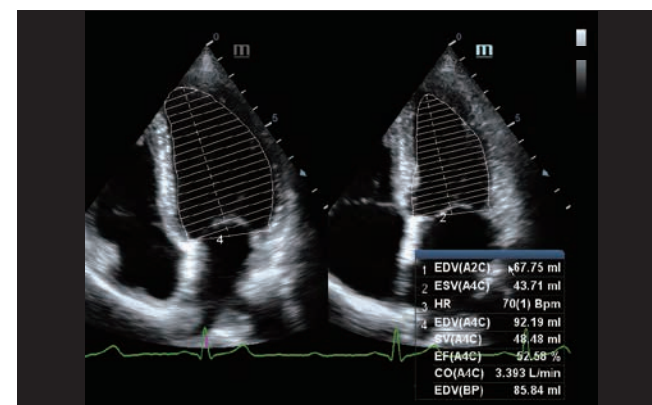
Intelligence throughout entire workflow

To improve scanning efficiency with more accuracy and consistency, the DC-60 ECHO with X-Insight provides easy-auto practical solution for Cardiovascular applications.

## Auto EF

More productivity with auto calculation

Auto EF is an intelligent way to analyze 2D echo clips to **automatically recognize** diastole & systole frames and **output** a series of measurements to evaluate left ventricle function for more productivity, such as EDV/ESV/EF.



Auto EF

# eXceeding Experience

## Experience with high productivity

Comfortable experience in scanning results in more patient focus for high quality exams. The DC-60 ECHO with X-Insight provides outstanding ease of use with better ergonomics, easier exams, and flexible management, even beyond your expectations.



21.5" full HD monitor



Unique dual-wing floating arm(optional)



13.3" ultra-slim touch screen with angle adjustment



Multi-Gesture operation



Interactive ultrasound APP --- MedSight/MedTouch



Elevating and rotating control panel

## Higher Reliable Dependence

For decades, Mindray cares about using intelligence to enhance the safety, accuracy and stability of its products, to ensure the satisfaction during your daily diagnosis.

### Guarantee of safety and stability:



#### EMC (Electro Magnetic Compatibility)

By obtaining the CB Test Certificate (the certificate for EMC approval, Ref. Certif. No. FI-31332), DC-60 ECHO with X-Insight reaches the highest anti-interference level assurance, which ensures the stability of its imaging quality.



#### Class B (Power supply requirement)

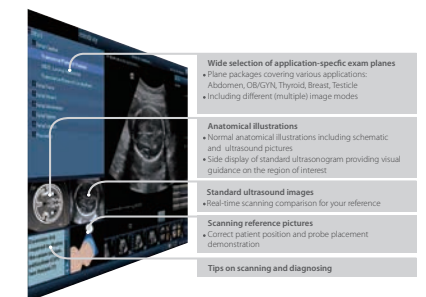
The power supply level required by DC-60 ECHO with X-Insight is Class B. It can work under not only hospital power supply condition (Class A), but city power supply condition (Class B), and it offers you more safety and compatibility when you operate DC-60 ECHO with X-Insight in any complicated environment.



Integrated control panel, anti-dust design



Transducer cable management, designed for regular and protection



iScanHelper (built-in tutorial)

# May the X-Insight be with you!

As an all-around partner to trust, DC-60 ECHO with X-Insight will provide you 'high efficiency with precision imaging' from all-aspects of your daily Cardiovascular application.