

DELPHI

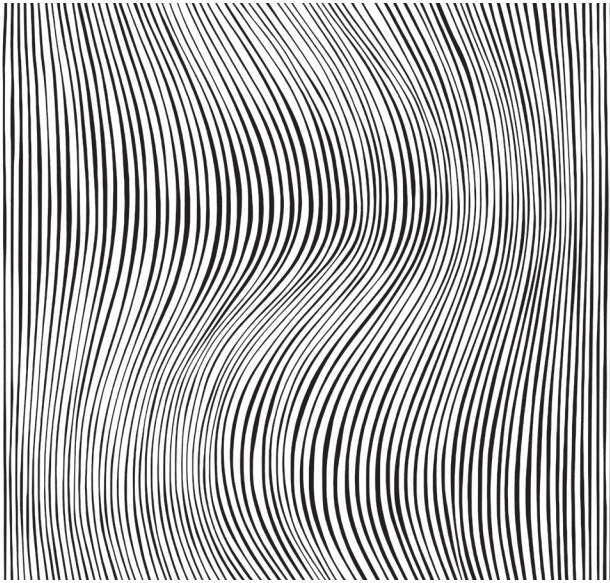
5020 Coccinella & silvery gold

Ancient Greek city where the temple and theater of Apollo were located. The Charioteer of Delphi was a bronze sculpture found in Delphi in 1896. This statue helped inspire Mariano and Henriette to develop their iconic pleated Delphos dress.

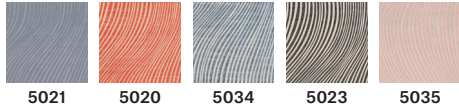
WIDTH 53.3 IN OR 135.5 CM

HORIZONTAL REPEAT 53.3 IN OR 135.5 CM

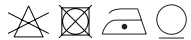
VERTICAL REPEAT 100 IN OR 254.0 CM



AVAILABLE COLORS:



MATERIAL: 100% COTTON



FORTUNY

VENICE
GIUDECCA 805
30133 VENEZIA ITALIA
+39 041 528 7697

NEW YORK
979 THIRD AVENUE SUITE 1632
NEW YORK, NY 10022
+1 212 753 7153

