

CAMPANELLE

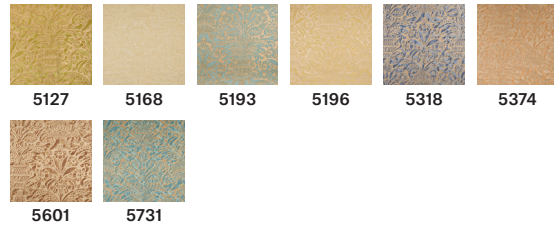
5601 Rembrandt rust, straw & silvery gold

As the myth goes, when Cupid dropped Venus' valued mirror, it was CAMPANELLE that sprouted from the shattered pieces. The beautiful bell flowers of Venus are celebrated in this densely decorated 17th-century Italian-inspired fabric. A symbol of everlasting love, CAMPANELLE is a romance to be treasured.

WIDTH LESS BORDER 51-54 IN OR 130-137 CM
REPEAT 14 1/4 IN OR 35 CM



AVAILABLE COLORS:



MATERIAL: 100% COTTON



FORTUNY

VENICE
GIUDECCA 805
30133 VENEZIA ITALIA
+39 041 528 7697

NEW YORK
979 THIRD AVENUE SUITE 1632
NEW YORK, NY 10022
+1 212 753 7153

