

# CAMPANELLE

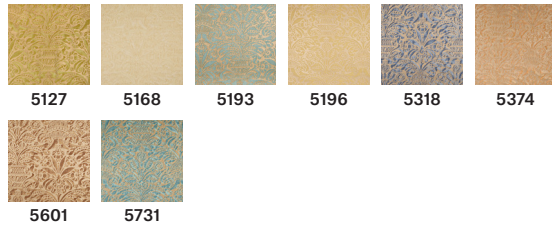
5168 Straw & off-white

As the myth goes, when Cupid dropped Venus' valued mirror, it was CAMPANELLE that sprouted from the shattered pieces. The beautiful bell flowers of Venus are celebrated in this densely decorated 17th-century Italian-inspired fabric. A symbol of everlasting love, CAMPANELLE is a romance to be treasured.

WIDTH LESS BORDER 51-54 IN OR 130-137 CM  
REPEAT 14 1/4 IN OR 35 CM



AVAILABLE COLORS:



MATERIAL: 100% COTTON



## FORTUNY

VENICE  
GIUDECCA 805  
30133 VENEZIA ITALIA  
+39 041 528 7697

NEW YORK  
979 THIRD AVENUE SUITE 1632  
NEW YORK, NY 10022  
+1 212 753 7153

