

Rondo

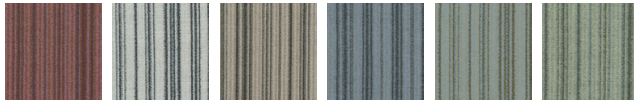
FF-20014 polar beige

WIDTH 150 CM/59"

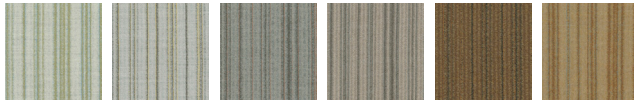
REPEAT N/A

Patterns Rondo and Fugue are woven from 100% merino wool in fine worsted flannel cloths. The highest quality worsted yarns and finishing techniques are borrowed from the menswear tradition to create two new dynamic interior cloth. Both patterns feature fiber-dyed mélangé wool yarn, a process that blends 3-8 individual fiber colors to create multi-dimensional colors. Rondo is a corded rib cloth construction paired with a warp colors to create a semi-random stripe. Fugue, an updated flannel cloth that combines several yarn colors in a pointillist effect. The yarns optically blend to create unique, iridescent fabrics.

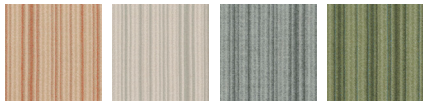
AVAILABLE COLORS:



FF-20001 **FF-20002** **FF-20003** **FF-20004** **FF-20005** **FF-20006**



FF-20007 **FF-20008** **FF-20009** **FF-20010** **FF-20011** **FF-20012**



FF-20013 **FF-20014** **FF-20015** **FF-20016**

Fortuny

NEW YORK
979 THIRD AVENUE
SUITE 1632
NEW YORK, NY 10022
212 753 7153

VENICE
GIUDECCA 805
VENEZIA 30123
ITALIA
+39 041 528 7697

