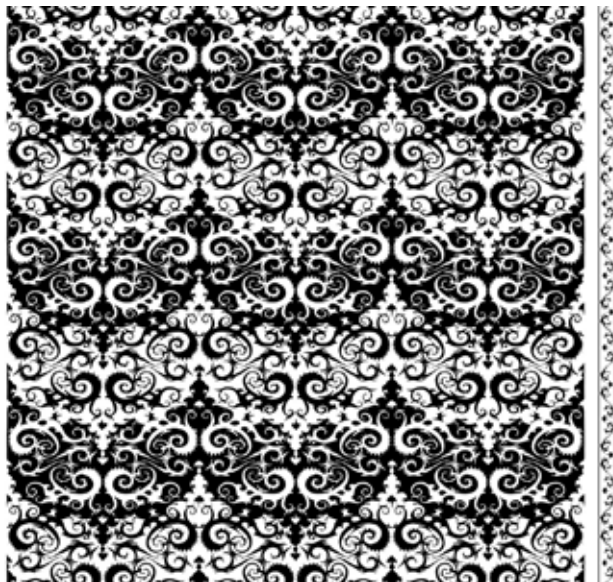


GIUDECCA

5990 mattone monotones & gold texture

Originally designed by Mariano Fortuny in the 1920's, Giudecca was named for the island on which he established his factory in 1921.

WIDTH LESS BORDER 47.5-49.5 IN OR 120-125 CM



AVAILABLE COLORS:



Fortuny

NEW YORK
979 THIRD AVENUE
SUITE 1632
NEW YORK, NY 10022
212 753 7153

VENICE
GIUDECCA 805
VENEZIA 30123
ITALIA
+39 041 528 7697