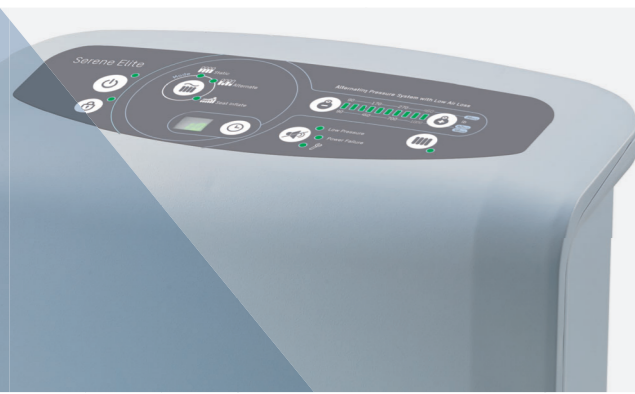


WOUNDCAREMATTRESS

Prevent & Treat Pressure Sores

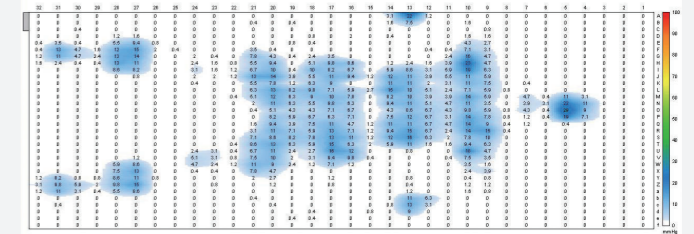


WCM-4505

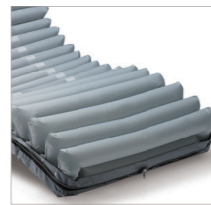
Alternating Pressure Mattress with Low Airloss (CLP) and Seat Inflations

Pressure Relief During Alternating

Pressure mapping reveals that in alternating mode, bladder A & B take turns to inflate and deflate can significantly relieve the body pressure



Ventilated Low Air Loss
Wick moisture away to keep the patients comfort



Cell-on-Cell Bladder
The bottom cells act as basic pressure support to avoid bottoming out in case of power failure



Heel Relief Function
Single air-cell deflation can float the heels with zero pressure



Visual and Audible Alarm

- Low Pressure
- Power Failure
- Tech Support



High Compressor Volume Airflow



CPR Valve
Quickly deflate the mattress during emergency



Zipper-all-around Cover
Reduce ingress of unwanted fluid and simply one step to remove for cleaning



4-Way Stretch PU / Nylon PU

- Low friction and shear
- Vapour permeable
- High-flame retardant
- Water resistant



Water Resistance 4-Way Stretch Vapour Permeable Flame Resistance



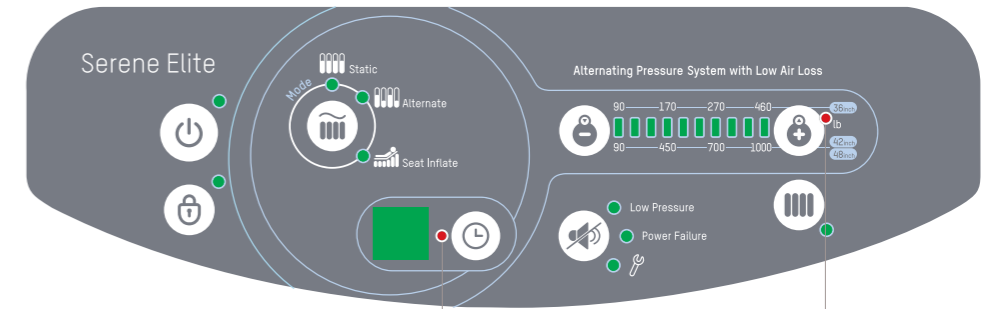
Cable Management
For a safety operational environment



Quick Connector
Once with cap on, instantly switch to static air mattress for transportation need

5 Modes to Fulfill Individual Needs

- Max Firm
- Alternating
- Continuous Low Pressure (CLP)
- Seat Inflation w/ Alternating
- Seat Inflation w/ CLP



4-Cycle Time (5/10/15/20 mins)

10 Comfort Levels

Specification

Model	Serene Elite			
Pump	Dimension	13.4" x 5.9" x 9.2" / 34.0 x 15.0 x 23.4 cm		
	Weight	6.83 lbs / 3.1 kg		
	Case Material	Flame retardant ABS		
Supply Voltage	AC 110-120V 60 Hz, 0.17A			
	Operating Cycle	10/15/20/25 min. selectable		
Mattress	8" Replacement			
	Dimension	80" x 36" x 8"	80" x 42" x 8"	80" x 48" x 8"
		200 x 90 x 20.3 cm	200 x 107 x 20.3 cm	200 x 122 x 20.3 cm
	Cell Height	8" x 20 cells		
Weight	16.5 lbs / 7.5 Kg	18.8 lbs / 8.5 Kg	21.0 lbs / 9.5 Kg	
Material	Cover: 4-Way Stretch PU / Nylon PU ; Cell: Nylon PU; Base: Nylon PVC			
Maximum Patient Weight	460 lbs / 210 kg	1000 lbs / 455 kg	1000 lbs / 455 kg	
Flame Retardant Standards	CAL 116 & CAL 117			
HCPCS code	E0277			

Specifications are subject to change for improvement without notice

WOUNDCAREMATTRESS

Prevent & Treat Pressure Sores

