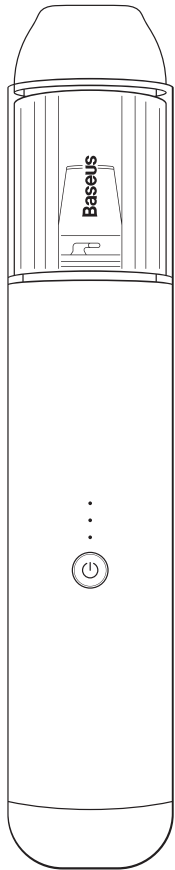


# Baseus



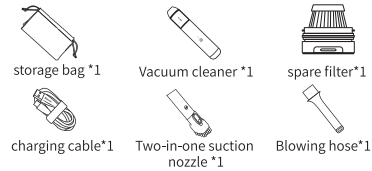
## Baseus A3 Car Vacuum Cleaner User Manual

Please read the manual carefully before using the product and keep it with proper care for future reference. Avoid the damage and danger from improper use.

### Product Introduction

Product diagram - Introduction of buttons / description of indicator lights (Blue LED battery level indicator\*3 + Red LED fault indicator\*1)

Product configuration:



### Product Parameters

Model No.:CRXCQA3  
Input: 5V=2.1A  
Rated power: 135W  
Battery capacity: 4 x 2000mAh  
Battery power: 28.8 Wh  
Charging time: 3-5h  
Noise: <75dB  
Charging port: Type-C  
Charging protocol: Support QC3.0 fast charging  
Size: 56.5 x 296mm  
Weight: About 700g

### Use Instructions

- (1) Please fully charge the vacuum cleaner before use.
- (2) Power on to use: Press the power button to start the standard suction force level, press again to open the high suction force level, and press for the third time to turn off the cleaner.
- (3) Turn on the light: Long press the power button for 3 seconds to turn on the light, and long press again to turn it off.

### Indicator Instructions

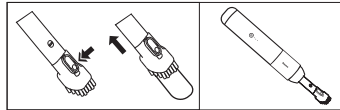
- 1.Three indicator lights show the battery level. When all of them light up means 100% battery, two of them light up means 60% battery, one of them lights up means 30% battery.
- 2.When one of the three indicators flashes in blue, that means insufficient battery left and the cleaner needs to be charged.
- 3.The indicators flash in blue during charging, and all three of them stays blue when is fully charged.
- 4.When the indicators flash in red, that means malfunction, in which case the machine will automatically shutdown.

### Accessory Instructions

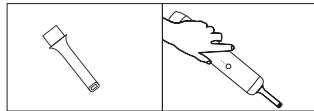
The 2-in-1 nozzle has two ways of using. Press and hold the button and slide the brush to switch between flat nozzle and brush nozzle.

The flat nozzle is more suitable for narrow spaces.

The brush nozzle is more suitable for fabrics.



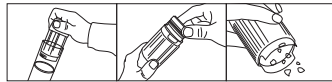
Assemble the blowpipe onto the bottom of the cleaner to blow out the dust and residue in hidden and small places.



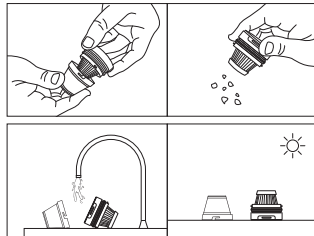
### Clean and Maintenance

Make sure to empty and clean the dust bin regularly, and do not leave debris in the dust bin for an extended period of time.

With the power off, turn the dust cup to remove the dust bin and pour out the dust and debris.



Rotate and separate the filter from metal filter mesh, clean the dust, or wash it with water, and reuse it after it's completely dried.



Recommend to clean the filter after 2 to 3 uses, and wash it with clean water after 5 to 6 uses.

### Change the filter

It is highly recommended to change the filter every three months for better experience and powerful suction force. The filter can be changed more frequently if it is used frequently.

### FAQs

#### Weak suction force

Clean the filter in time, and the suction will restore to normal.

#### The product does not work

Check whether the suction port is blocked. If so, it needs to be cleaned in time. Due to the circuit protection design, when the temperature of the battery core is higher than 74 degrees, the product will turn off automatically.

#### The vacuum cleaner can not be charged

You may not have connected the vacuum cleaner to the charger correctly. Please connect the vacuum cleaner to the charger with the charging cable.

You may not have plugged the adapter into the power outlet correctly; please plug the adapter into the power outlet.

Due to the circuit protection design in the product, when the temperature of the battery core is higher than 55 degrees, the charging time will be extended and the actual charging MOS will be turned off. You need to wait for the temperature to drop before charging normally.

#### The vacuum cleaner does not vacuum properly

The dust bin may not be installed correctly on the product. Please install the dust bin correctly on the vacuum cleaner.

The dust container may be full. Please empty the dust container.

The filter may be clogged. Clean the inner filter and the outer filter.

### Cautions

- 1.Be sure to unplug the power cord before cleaning the vacuum cleaner.
- 2.Please use the charging cable included with this product to charge the vacuum cleaner.
- 3.This product contains a built-in battery, please do not place this product near heat sources and exposed to fire sources.
- 4.This product contains a non-removable battery, please do not replace it by yourself to avoid damage to the battery and equipment.
- 5.This product is a conventional electronic product, please do not put this product in the fire sources, heat sources or direct exposed to fire sources.

### Danger warning

- 1.Never use on wet surfaces.
- 2.Never use on flammable or combustion materials.
- 3.Never immerse the vacuum cleaner or the charging cable in liquid.



This equipment complies with the provisions of Directive 2012/19/EU and Directive 2006/66/EU. It is strictly forbidden to dispose of this equipment with ordinary trash; it must be recycled. This symbol indicates that the product shall not be treated as regular domestic trash, and must be delivered to a recycling center that is capable of recycling electronic and electrical equipment. It is hereby declared that CRXCQA3, a product model of Shenzhen Times Innovation Technology Co., Ltd., complies with the provisions of Directive 2014/30/EU, Directive 2011/65/EU. The full text of the EC Declaration of Conformity can be found on the following website: [www.baseus.com](http://www.baseus.com)

This device complies with part 15 of the FCC Rules. Operation is subject to the following two conditions: (1) this device may not cause harmful interference, and (2) this device must accept any interference received, including interference that may cause undesired operation. Any changes or modifications not expressly approved by the party responsible for compliance could void the user's authority to operate the equipment. NOTE: This equipment has been tested and found to comply with the limits for a Class B digital device, pursuant to Part 15 of the FCC Rules. These limits are designed to provide reasonable protection against harmful interference in a residential installation. This equipment generates, uses and can radiate radio frequency energy and, if not installed and used in accordance with the instructions, may cause harmful interference to radio communications. However, there is no guarantee that interference will not occur in a particular installation. If this equipment does cause harmful interference to radio or television reception, which can be determined by turning the equipment off and on, the user is encouraged to try to correct the interference by one or more of the following measures: -Reorient or relocate the receiving antenna. -Increase the separation between the equipment and receiver. -Connect the equipment into an outlet on a circuit different from that to which the receiver is connected. -Consult the dealer or an experienced radio/TV technician for help.



Manufacturer: Shenzhen Times Innovation Technology Co., Ltd.  
Add: 5th Floor, Building B, Baseus Intelligence Park, No.2008, Xuegang Rd, Gangtuo Community, Bantian Street, Longgang District, Shenzhen

Executive Standard: Q/SSCZ 026

Email: [service@baseus.com](mailto:service@baseus.com)

PB3500Z\_P0A0

1000041645

Designed by Baseus

Made in China

The picture is only for reference.