



LED-GLOVEBOX

Automated Glove Box Courtesy Light – Vanagon [80-91]

Rooting around in the glove box at night can be a frustrating experience, and the stock “map” light doesn’t do a whole lot of good, if it even works at all. This kit will provide instant, on-demand, *useful* light, right where you need it—for those critical times when you are digging for whatever it is you need.

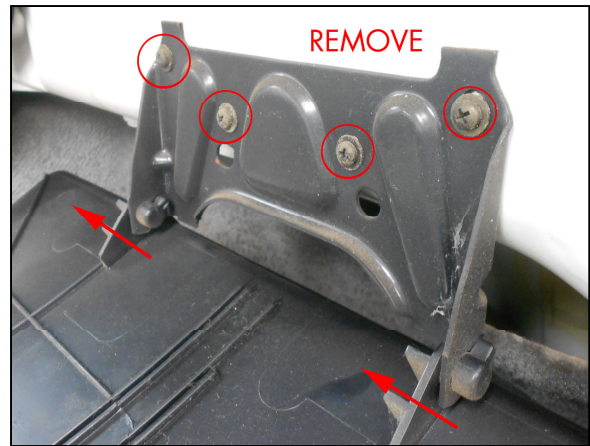
Tools Needed

- Phillips screwdrivers, #1 and #2
- Drill
- 3/32” drill bit
- Wire stripper & crimper

DISCLAIMER: *This kit has been designed for easy installation. However, it does involve cutting and splicing into factory wiring. The installation of this kit is not within everyone’s ability. Read through these instructions carefully and decide if installing it is for you. If not, please take your vehicle to an automotive electrician. Wiring errors can be troublesome and hazardous.*

INSTALLATION

1. Begin by disconnecting the vehicle battery (disconnect both the main battery and auxiliary battery, if you have one).
2. Remove the glove box by tilting it forward and releasing safety catches at the top rear of the box. If you have a late van, bend the tabs inward. If you have an early van, unhook the straps. Lower the glove box completely forward and slide toward the driver’s side to release it from the mounting bracket.
3. Mark the location of the mounting plate, and then remove it via the four Phillips head screws holding it in.
4. Using the provided template (see last page), drill two 3/32” holes in the inboard “wing” of the mounting plate in the locations shown. Use the small machine screws and locknuts to affix the switch in the orientation shown, with the hinge on the lever arm at the top and the wires exiting up.



NOTE: *These holes position the switch for proper function, so accuracy is important when marking and drilling these holes. When you reinstall the mounting plate and test the function of the switch, it should click off when you close the glove box and click on when you open it. If the contact point needs a slight adjustment, the lever arm on the switch can be carefully bent with some needle nose pliers.*



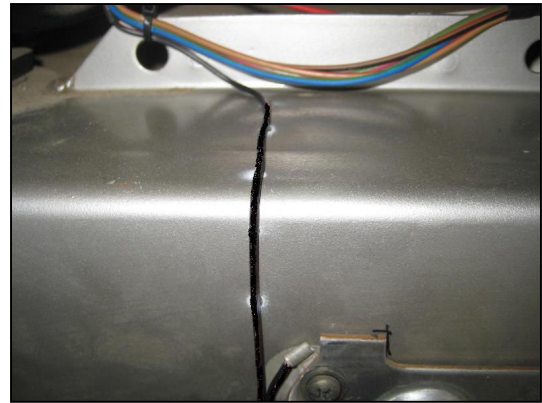
LED-GLOVEBOX

Automated Glove Box Courtesy Light – Vanagon [80-91]

5. The switch is grounded at the top left hole of the mounting plate. Install the plate back into position, with the ground terminal clamped securely between the plate and the vehicle body (it is helpful to scuff the paint away where the terminal contacts the body, in order to provide a nice solid ground).



6. Small dabs of super glue can be used to keep the wire cleanly held against the body as it runs up and back behind the glove box.
7. Now that the plate is mounted back into the van, re-install the glove box and test the function of the switch. Make sure it is clicking on and off when you open and close the glove box. The lever arm on the switch can be carefully bent with a pair of needle nose pliers to fine-tune the adjustment, if necessary.



8. Use the alcohol wipe to clean the inside horizontal lip above the glove box. Peel the backing from the light strip and apply it firmly. Be sure the wiring is exiting the light strip toward the driver's side with the LEDs aiming down into the glove box (this is a side-emitting strip). Attach the wire clip to the inside support member to hold the exiting wire out of the way of the glove box's hook arms when the glove box is put back in. Tidy up the wiring to avoid interference with an operating glove box.



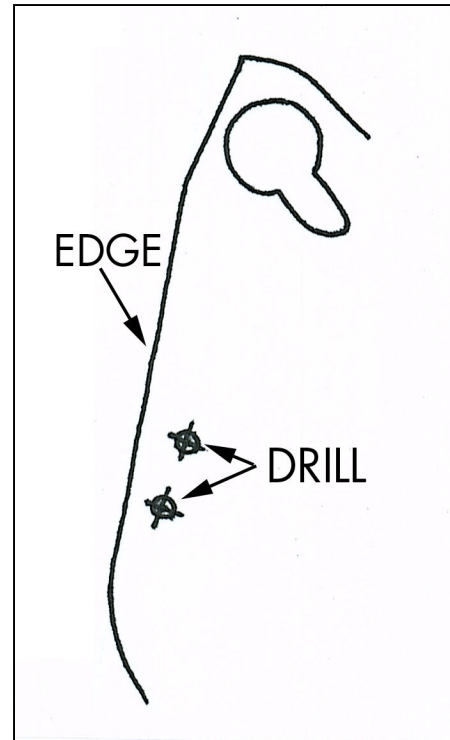
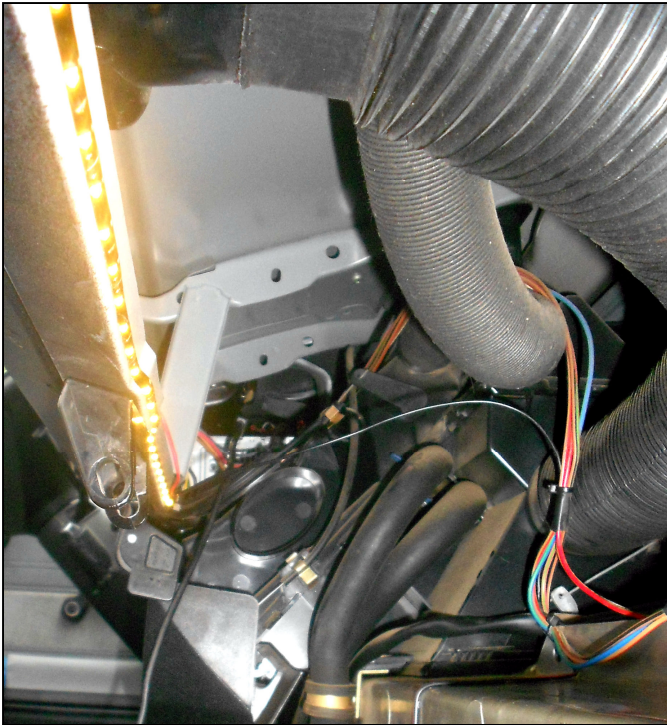


These instructions and the images herein are proprietary. Any unauthorized reproduction is prohibited.

LED-GLOVEBOX

Automated Glove Box Courtesy Light – Vanagon [80-91]

9. For vans with a padded dash and a map light, tap into power at the map light. Remove the map light and unplug the red wire off the back of the light. Cut off the connector, strip the ends of both red wires (from map light and LED), and twist the two wires together. Crimp them both into the included, insulated, yellow connector, plug the connector back onto the map light, and re-install the map light. For vans with an unpadded dash, tap into power at the 12V outlet. Attach the included blue T-tap onto the red wire from the outlet. Strip the end of the red wire from the LED, crimp the included red, insulated male connector on, and plug it into the T-tap. Re-install the glove box, reconnect battery/batteries, and test for proper function.



DRILLING TEMPLATE



You're done! Now you can find your registration and insurance card, if necessary!