



These instructions and the images herein are proprietary. Any unauthorized reproduction is prohibited.

GW-V-UNDERRUN-SUPPORTS

Driveshaft and Engine Underrun Supports for
1986-1991 Vanagon Syncro (4WD)

When we needed to strengthen the under run bars on our NORRA race vans we designed these Mid Span and Engine Underrun Bar Supports. We took our Syncro out one weekend without these supports, and ended up with a bent driveshaft! Now we don't leave home without 'em!

Tools Needed

- 13mm Socket or Wrench
- Pry Bar
- 17/64" Drill Bit
- Hand Drill



Parts List

- Right & Left Rear Engine Support
- Right & Left Mid-Span Support
- M8 x 45mm SS Bolts (x2)
- M8 x 20mm SS Bolts (x4)
- M8 x 80mm SS Bolts (x2)
- M8 SS Nylock Nuts
- M8 SS Washer (x16)



Fitment Note: These supports are designed for use with STRAIGHT underrun bars. If you intend to use these supports and your underrun bars are bent, you will have to straighten them out or otherwise "convince" these supports to fit in place.

This driveshaft below was bent when the underrun bars were deformed without our Underrun Supports. Don't let this happen to you, install our supports!





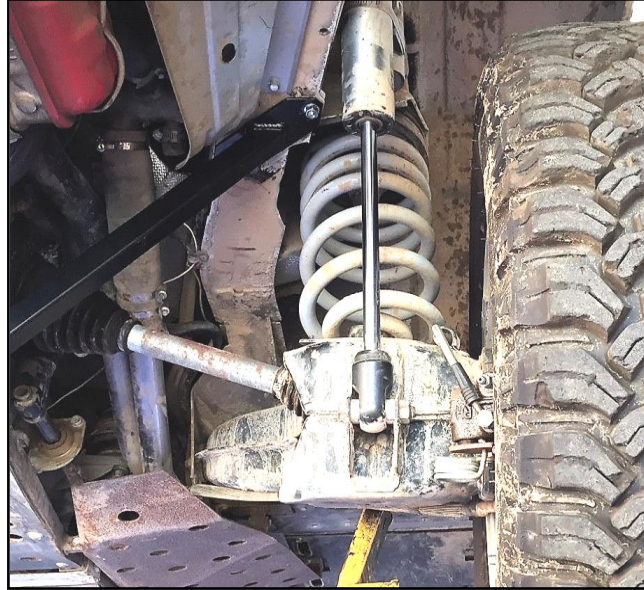
These instructions and the images herein are proprietary. Any unauthorized reproduction is prohibited.

GW-V-UNDERRUN-SUPPORTS

Driveshaft and Engine Underrun Supports for
1986-1991 Vanagon Syncro (4WD)

Installation Instructions

- 1) First, place the rear support in place along the underrun bar and coming in contact with the slots along the frame. Insert the M8x20mm bolts through the top plate and loosely thread the Nylock nuts and washers on to keep the support in place.



Note: The coolant pipe between the water pump and thermostat housing does not always sit in the same spot. Yours may interfere with this support. All you need is about 1/2" of clearance between the heater hose and the underrun support. Simply bend the coolant pipe up and away from that support so it ends up 1/2" away from the underrun support. The hose between the pipe and thermostat housing will flex out of the way.

- 2) If you have the underrun skid plates installed, simply unbolt the carriage bolt closest to the base of the rear mid-span support. Send the carriage bolt through the skid plate, underrun bar and underrun support base. Tighten down the Nylock nut. If you do not have underrun skid plates, you will have to mark and drill the hole on the underrun bars before sending the included M8x45mm bolt through the mid-span support. Install the washer and Nylock nut.





These instructions and the images herein are proprietary. Any unauthorized reproduction is prohibited.

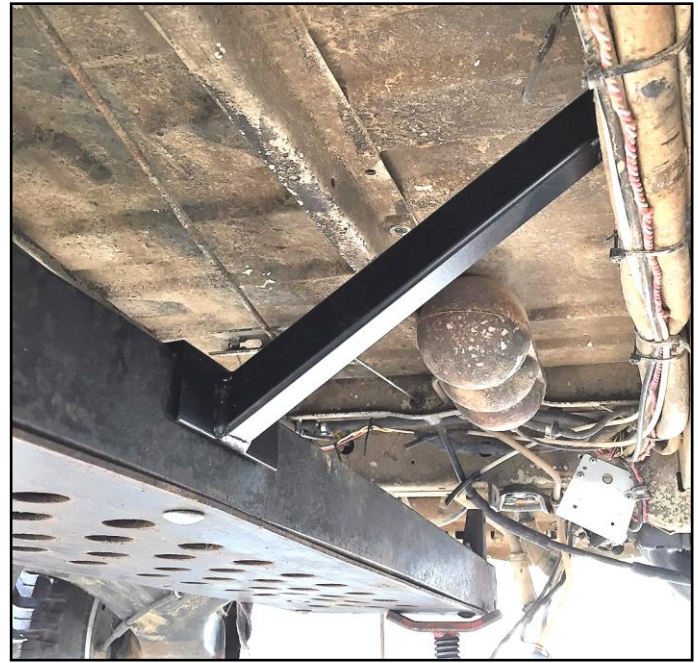
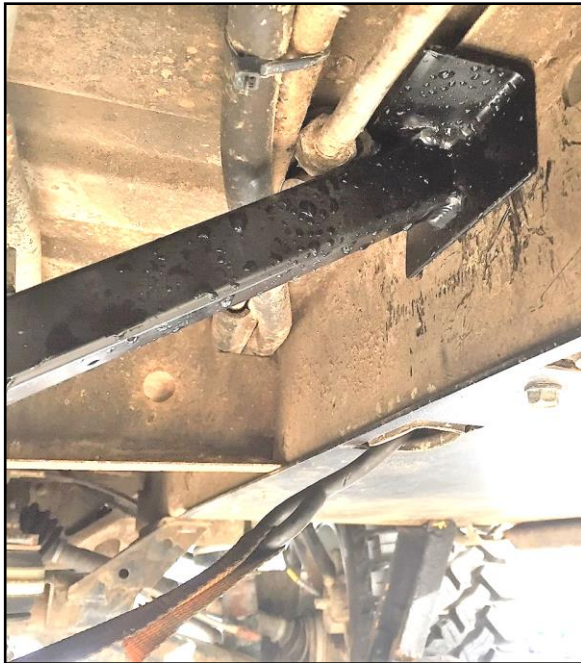
GW-V-UNDERRUN-SUPPORTS

Driveshaft and Engine Underrun Supports for
1986-1991 Vanagon Syncro (4WD)

- 3) Remove the bolts at the rear of the underrun bars along the driveshaft. Lower the underrun bars to allow you to fit the mid-span supports in place. Raise the underrun bars up into place with a jack stand until the mid-span support is securely wedged up to the frame.



- 4) You will need to push the electrical lines and fuel lines slightly out of the way to make room for the top of the mid-span support. If you have the center skid plates along the underrun bars, simply unbolt the carriage bolt send it through the base of the support. If you do not have underrun skid plates, you will have to mark and drill the hole on the underrun bars before sending the included M8x80mm bolt through the mid-span support. Tighten down the Nylock nuts with the included washers.



Time to go rock crawling!