



These instructions and the images herein are proprietary. Any unauthorized reproduction is prohibited.

GW-V-SPARE-HOOK-CATCH

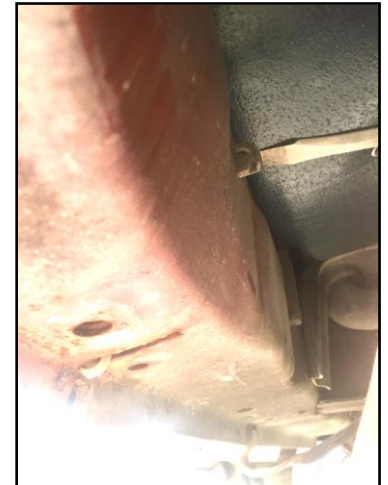
251-803-659B & 251-803-687A Replacement Latch Assembly
1980-91 Vanagon

If your clamshell-style spare tire latch is broken or worn out, replace it with an improved stainless steel latch assembly reproduction. This assembly features a brand new stainless steel latch and spring with a simple nut and bolt for easier installation and a strengthened latch pull for a more durable, long-lasting latch.

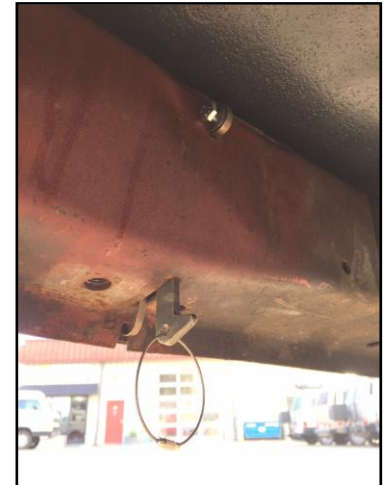
Tools Required	Hardware & Parts List	
<ul style="list-style-type: none">Flat Head Screwdriver or Chisel10mm Open End Wrench	<ul style="list-style-type: none">M6 Nylock NutM6 x 12mm BoltLatch	<ul style="list-style-type: none">Latch SpringLatch Pull

Installation Instructions

- 1)** Begin by removing the original latch. For metal latches, use a punch to remove the retaining pin. For plastic latches, use a flat head screwdriver or chisel to push the latch retaining mechanism back into the slot. *(Plastic latch removal shown below.)*



- 2)** Insert the replacement latch and secure the 6mm nut and bolt through the top hole. Send the latch pull cable through the bottom hole and secure the cable.



That's It!