



These instructions and the images herein are proprietary. Any unauthorized reproduction is prohibited.

Vanagon Supplemental Lighting Kit

VANO-AUX-HEADLINER-LIGHT-KIT

1980-1992 Vanagon Campers

This kit makes it easy to add additional headliner lights to your van for a brighter future. This kit was designed to work seamlessly with our aftermarket headliners which have 3 additional light pop-outs for better lighting in the front of the van.

Tools Needed

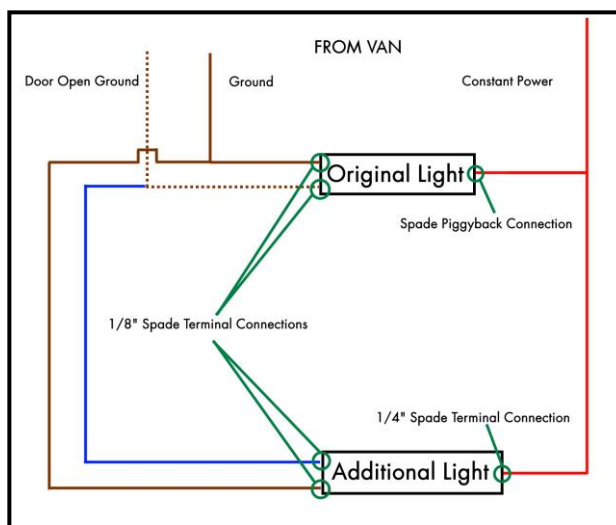
- 10mm Wrench or Socket
- Wire Strippers
- Wire Crimpers
- Mechanics Pick
- Tape Measure
- Masking Tape

DISCLAIMER: This kit has been designed for easy installation. The installation of this kit is *not* within everyone's ability. Read through these instructions carefully and decide if installing it is for you. If not, please take your vehicle to an automotive electrician. Wiring errors can be troublesome and hazardous.

Kit Contents

- (4) 1/8" Female Spade Connector
- (1) 1/4" Spade End Connector
- (1) Spade Piggyback Connector
- (4) Zip Ties
- (1) Bulb Housing
- (1) LED Bulb
- (5') 16 GA Black Wire
- (5') 16 GA Blue Wire
- (5') 16 GA Red Wire

Basic Wiring Diagram

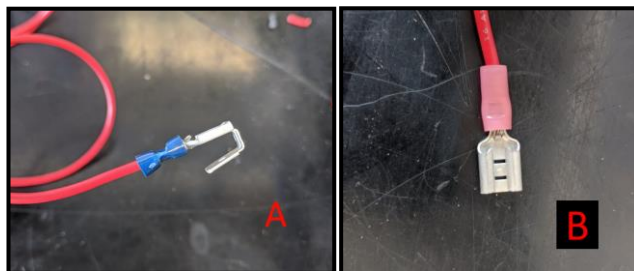


REMOVE THE HEADLINER:

- 1) Disconnect the negative side of the battery and remove the headliner, following the procedure in the Bentley (75.7a).

BUILD THE HARNESS:

- 1) Decide where you would like the additional light to determine how long the three wires should be. Measure how far the additional light is from the driver's light. Add 8" to this measurement, allowing yourself some slack to work with, and cut all of the wires to length. Strip the ends of all the wires.
- 2) Construct the red power wire:
 - a) On one end, crimp the 1/4" spade terminal piggyback connector, this will be side 'A'.





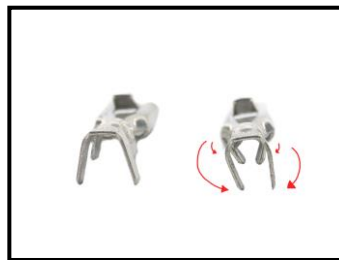
These instructions and the images herein are proprietary. Any unauthorized reproduction is prohibited.

Vanagon Supplemental Lighting Kit

VANO-AUX-HEADLINER-LIGHT-KIT

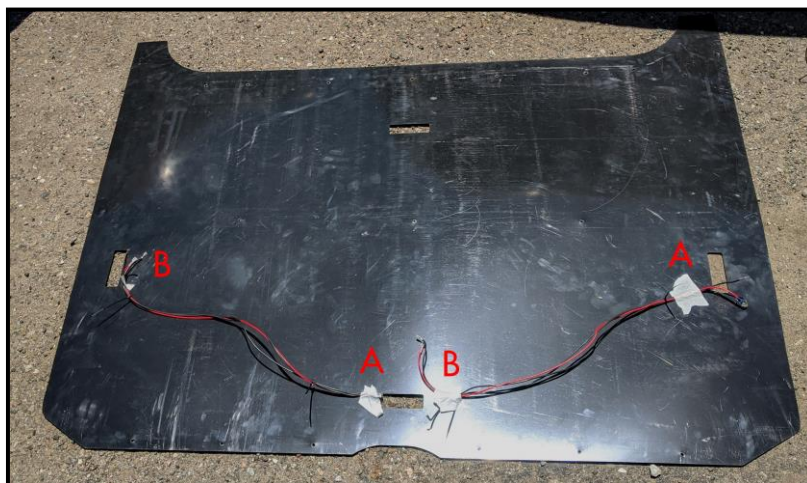
1980-1992 Vanagon Campers

- b) Crimp the 1/4" female spade connector terminal to the end of the red wire. This will be side 'B' of the wire.
- 3) Construct the brown ground wires:
 - a) Use pliers or crimpers to direct the crimping ears of the 1/8" spade connector inward as shown:
 - b) Crimp the 1/8" female spade terminal to both ends of the black wire.
 - c) Use a pick or flat blade to open the female end of the terminal to allow it to slip over the male 1/8" terminal on the light housing.
 - d) Repeat this process for the blue wire.



INSTALL THE NEW LIGHTS:

- 1) Tape the wires to the top side of the headliner so you can retrieve the ends when the headliner is installed. Orient side 'A' of the red power with the original headliner light on the driver's side. (Pictured below is a 3-light set up where 2 kits have been used)



- 2) Reinstall the headliner. Use Bentley 75.8 for detailed instructions.



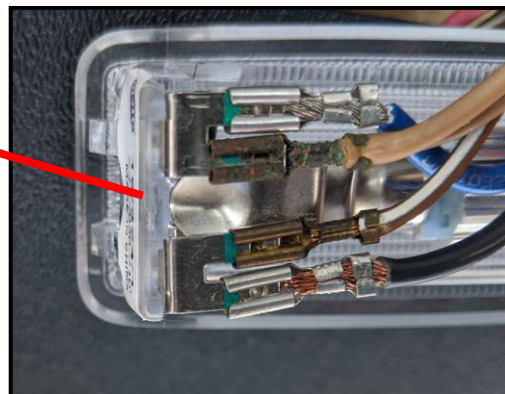
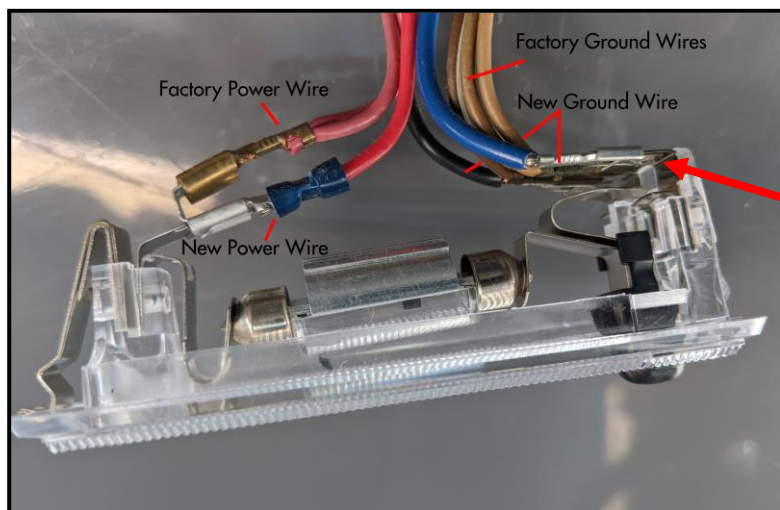
These instructions and the images herein are proprietary. Any unauthorized reproduction is prohibited.

Vanagon Supplemental Lighting Kit

VANO-AUX-HEADLINER-LIGHT-KIT

1980-1992 Vanagon Campers

- 3) Plug the factory power wire (red) into the open terminal on side 'A' of the power wire as shown in the completed install photos below:



- 4) Plug side 'A' of the power wire into the positive terminal on the driver's light.
- 5) Plug in the factory brown wire to the negative side of the driver's light. Plug in one side of the blue wire to this same terminal.
- 6) Plug in the factory brown and white wire (door signaled) to the remaining terminal on the driver's light. Plug one side of the black wire into that same terminal.
- 7) Plug in side 'B' of the red power wire to the single terminal side of the switch. Plug the blue and black wire into the multi-terminal side of the switch.

***Note:** The blue wire connection will turn the light on when the doors are open. Orient the light accordingly if you have a preference on switch direction.*

- 8) If you are installing more than one additional light, we recommend daisy chaining the lights off each other so that each light only has one set of spade connector splitters. The directions above can be followed for each additional light.
- 9) Reconnect your battery.

You're Done, time to get lit!