



These instructions and the images herein are proprietary. Any unauthorized reproduction is prohibited.

GWV-Fix-A-Flap

Fix-A-Flap

1980-1991 Vanagon

We all love rocking a sweet rooster tail after a day on the trails, but some days you just want a clean van as the center piece in your driveway. If your van is like most, then the original German mud flaps have seen better days, if they are still there at all! This kit allows those flaps to be repaired without even taking them off the van. These flaps will protect your LP tank from rocks and debris just as the factory ones did, and keep your van looking sharp.

Tools Needed

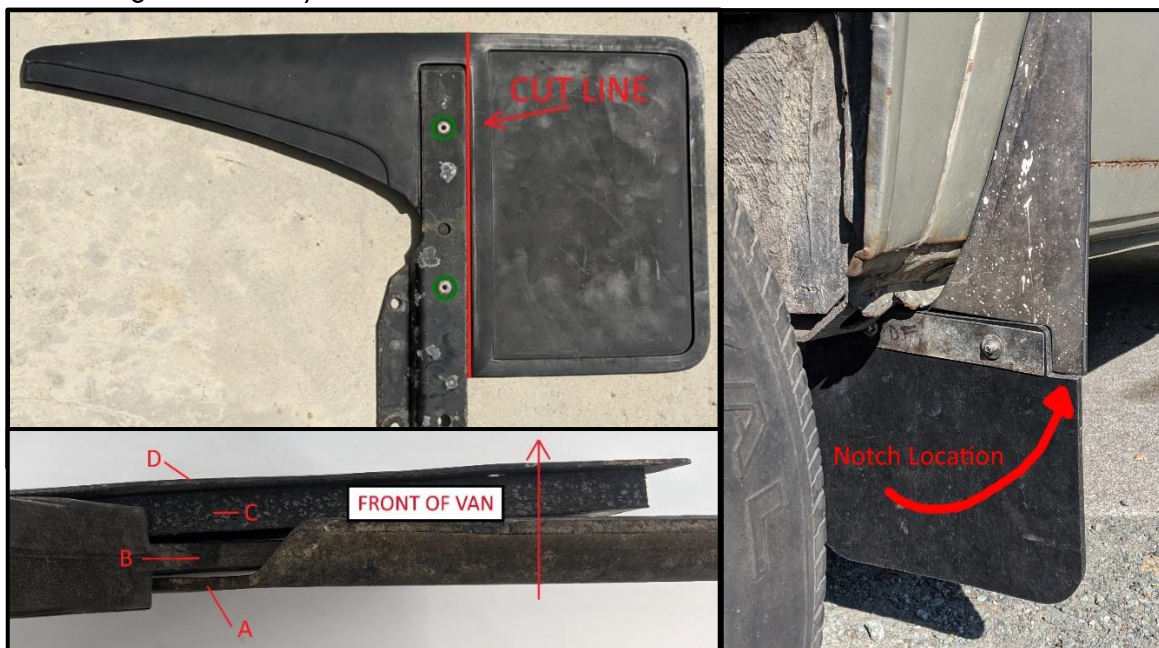
- 10mm Wrench
- 10mm Socket
- Drill
- ¼" Drill bit
- Utility Knife with a fresh blade or Hacksaw
- Safety gear

Hardware

- (2) M6 x 30mm Bolt
- (2) M6 Nylock Nut
- (4) Washers
- (1) Fix-A-Flap
- (1) Anti-Seize

Installation Instructions

- 1) Cut off the remnants of the old flap along the bottom of the bracket as shown in RED below using a utility knife and fresh blade or a hacksaw if available.
- 2) Drill out the two rivets circled in green, then drill out the original rivet holes to ¼". This can be done on or off van, depending on how crusty your attachment screws are.
- 3) Arrange the parts starting from the bracket bolted to the van moving towards the front: Metal bracket (A) – old flap material (B) - new flap material (C) – metal stiffener (D)
***Note: the notch on the flap goes on the outside of the van as shown**
- 4) Insert the bolts from the rear of the van, using a washer on either side of the assembly and securing it with the nylock nut. ***Note: Use the included Anti-Seize on all hardware***



You're Done!