





These instructions and the images herein are proprietary. Any unauthorized reproduction is prohibited.

## GW-RAD-MOTOR-BRKT

450-Watt Radiator Fan Adaptor Bracket

Fits 1983–1991 Vanagon with 300/200-Watt Radiator Fan Motor

This Adaptor Bracket converts your 300/200W radiator fan shroud to accept the more common, more powerful, 450W fan motor which came standard on all 1986–1991 models with AC.

Parts List 	Tools Required 
<ul style="list-style-type: none"><li>(1) Motor Mount Conversion Bracket</li><li>(9) M6 Self Clinching Studs</li><li>(9) M6 Nuts</li><li>(9) Split Lock Washers</li><li>(6) Flat Washers</li><li>(3) Locating Pins (Rivets)</li></ul>	<ul style="list-style-type: none"><li>• Hacksaw (or Cutting Wheel)</li><li>• File (or Cutting Wheel)</li><li>• Drill</li><li>• 15/64in Drill Bit [6mm]</li><li>• Vice Grips</li></ul>

**DISCLAIMER:** This kit has been designed for easy installation. However, *the installation of this kit is not within everyone's ability.* Read through these instructions carefully and decide if installing it is for you. If not, please take your vehicle to an automotive shop for professional installation.

This conversion bracket converts a 300/200W radiator shroud to accept the 450W fan motor. The 300/200W and 450W fans use a similar sized fan blade with a very close fit to the circular shroud opening. *Do not attempt this conversion if the circular shroud opening is significantly bent, deformed, or if there is already interference between the 300/200W fan blades and the shroud.* After converting the shroud, please mount the new 450W motor and fan blade onto the shroud and confirm that the blades spin freely without interference before installing the assembly on-van.

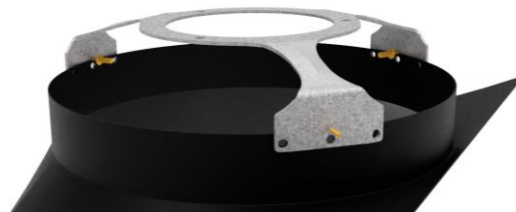
### Conversion Instructions

**INSTALLATION NOTE:** The 300/200W radiator shroud must be fully removed from the van in order to convert the motor mount using this Adaptor Bracket. For instructions on removing and re-installing the radiator shroud, reference the Bentley Vanagon manual.

- 1) Cut off the stamped OE mounting bracket from your 300/200W shroud using a hacksaw or cutting wheel. Smooth the edge with a file or cutting wheel until the foot pad remnants are even with the outer edge of the shroud opening.



- 2) Locate the Adaptor Bracket by inserting the three provided rivet pins into the three small locating holes, then setting the Adaptor Bracket on the shroud so that the Adaptor Bracket foot pads line up with the remnant foot pads.





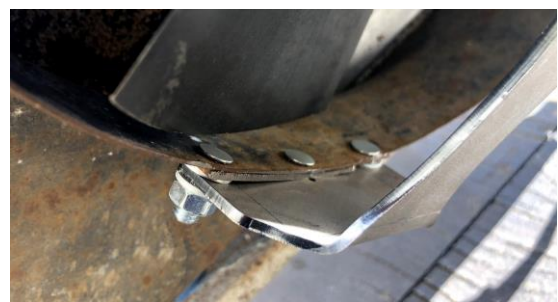
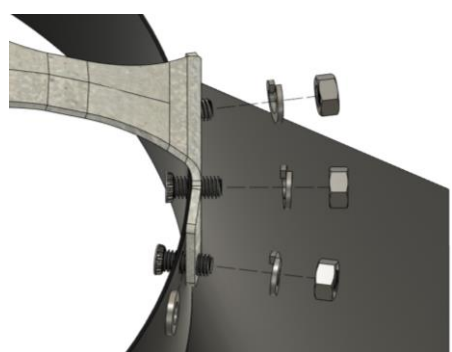
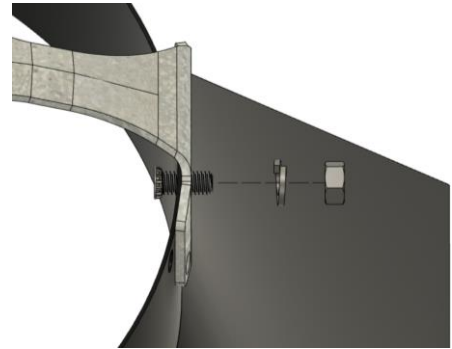
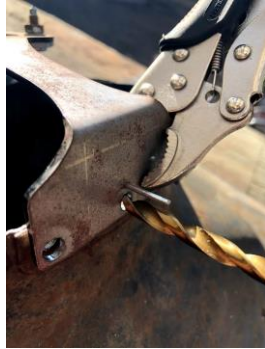
These instructions and the images herein are proprietary. Any unauthorized reproduction is prohibited.

## GW-RAD-MOTOR-BRKT

450-Watt Radiator Fan Adaptor Bracket

Fits 1983–1991 Vanagon with 300/200-Watt Radiator Fan Motor

- 3) Clamp one pad with a vice grip.
- 4) Using the center hole in the new bracket as a guide, drill a hole in the shroud.
- 5) Insert a PEM stud, nut, and lock washer and hand tighten. Repeat Steps (3) and (4) on the other two foot pads. Then, remove the rivet pins from the small, locating holes.
- 6) Repeat Steps (4) and (5) for the remaining six [6] holes. While installing the self-clinching stud in these hokes, place an additional flat washer between the new bracket and hole in shroud.



- 7) Torque down all bolts until the self-clinching stud heads are flush on the inside edge of the shroud opening.

Your 300/200W fan shroud is now ready for a 450W fan motor. Before installing the shroud onto a van, please mount the new 450W motor and fan blade onto the shroud and check that the blades spin freely without interference.

**That's It!**