



These instructions and the images herein are proprietary. Any unauthorized reproduction is prohibited.

GW-B-SWING-ARM

Bus Bumper Swing Away
1973-79 T2

After many requests and a handful of prototypes, we are happy to introduce a swing away system for your Bus! This system bolts right onto the GoWesty heavy-duty bumper and can be customized with showers, storage boxes, fuel tanks, water tanks, storage trays, bike racks, spare tires, in any combination you can put together.

Hardware List		Parts List
(9) M8 x 25 SS Bolt	(2) M10 SS Wide Washer	Swing Arm
(21) M8 SS Washer	(1) M10 SS Lock Washer	Riser
(13) M8 SS LockWasher	(1) M10 SS Nut	Hinge Bracket
(11) M8 SS Nut	(1) M10 x 130mm SS Bolt	Hinge Tube
(2) M8 x 80 SS Bolt	(2) M5 SS Nyloc Nuts	Bottom Latch
(3) M8 SS Wide Washer	(2) M5 Washers	Bottom Latch Bracket
(1) #8 Self Tapping Screw	(2) M5 x 16 SS Bolt	Plastic Bumper
(8) UHMW Washers	(2) M5 x 12 Countersunk Screw	Strut
(2) Strut Ball Studs		

IMPORTANT INSTALLATION NOTE: USE ANTI-SEIZE COMPOUND ON ALL STAINLESS-TO-STAINLESS FASTENER JUNCTIONS! When installing stainless fasteners together, they tend to bind up. When this happens there is usually no recourse except to cut them off and start over with fresh fasteners. Using Anti-Seize Compound prevents this from happening, so don't skimp on the anti-seize, and don't forget it!

The installation of this kit is not within everyone's ability. While it is not overly complex, it does involve careful measuring and drilling. Read through these instructions thoroughly and decide if installing it is for you. If not, please take this product to your local automotive professional.

We recommend purchasing and installing the universal carrier we offer for the bus. The universal carrier can be customized with all sorts of accessories, but also provides some much-needed support to the system with our custom gutter mount bracket.

Make the most out of your swing-away with our wide range of available add-ons.

- [Universal Carrier](#)
- [Tire Carrier Tower](#)
- [Spare-Tire Carrier](#)
- [Reverse Spare Tire](#)
- [Reverse Spare Lockable Storage](#)
- [Storage Box](#)
- [Universal Rungs](#)
- [Yakima Upright Bike Racks](#)
- [Storage Tray](#)
- [Small Shower](#)
- [Storage Box Tie Downs](#)
- [Spare Tire Trasharoo](#)
- [RotoPax Mount](#)





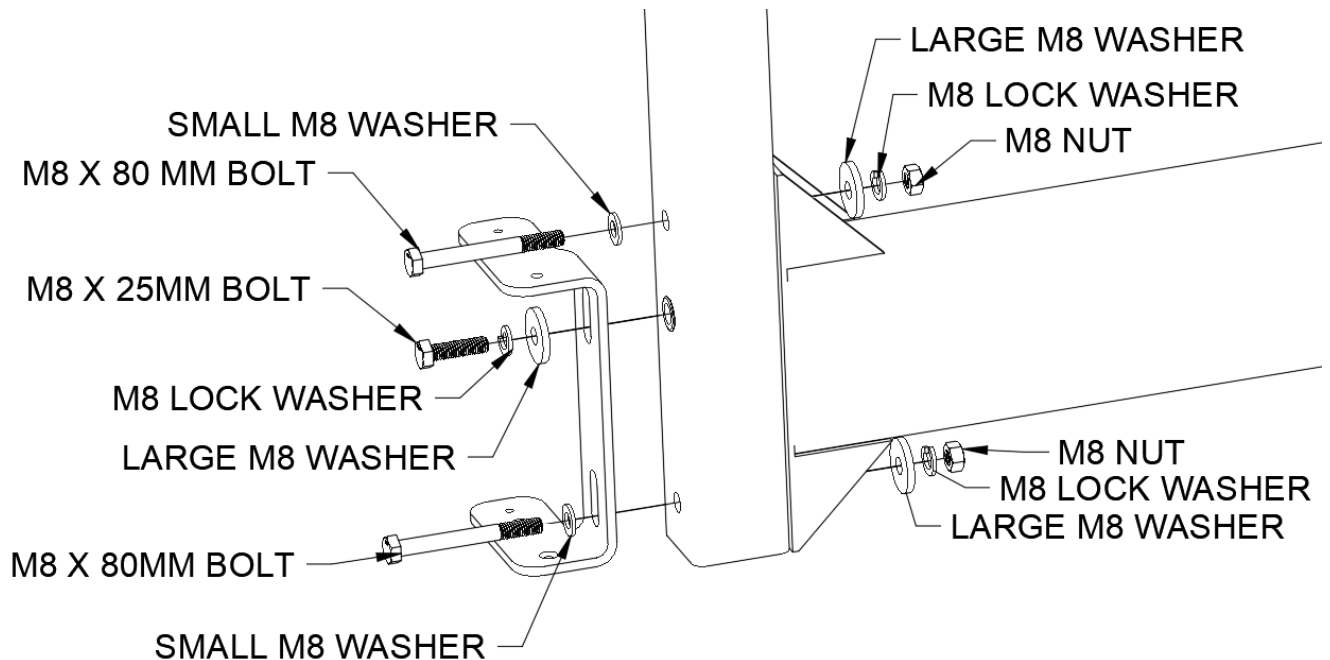
These instructions and the images herein are proprietary. Any unauthorized reproduction is prohibited.

GW-B-SWING-ARM

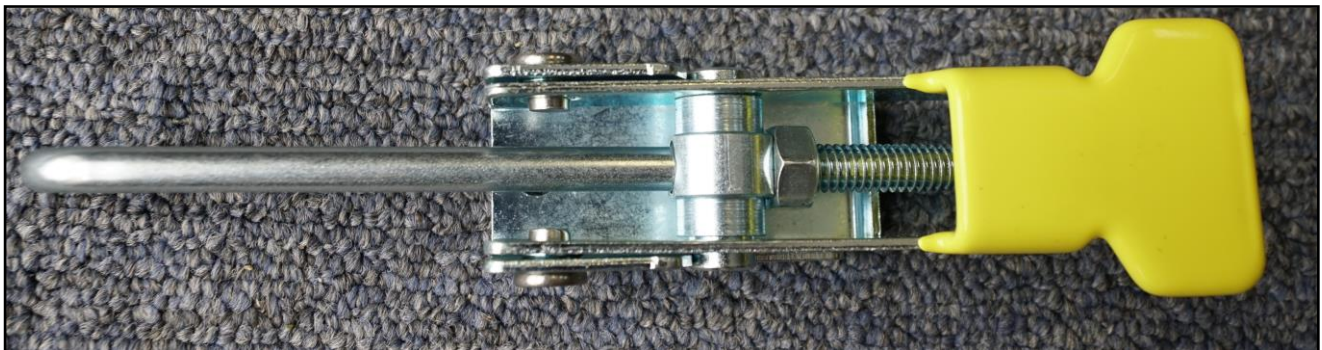
Bus Bumper Swing Away
1973-79 T2

Installation Instructions

- 1) Make sure you have installed a GoWesty heavy-duty Bus bumper ([GW-B-BUMPER](#)) before beginning the swing away installation.
- 2) Connect your riser and lower latch bracket to your swingarm. The lower M8 x 80mm bolt of the latch bracket will sandwich the bracket, riser, and swing arm tabs. The upper bracket hole will screw into the riser rivnut, and the upper M8 x 80mm bolt will sandwich the riser and swing arm tab together. Make sure the thicker weld bead on the swing arm is facing outwards when you install the riser and latch bracket. Don't forget to apply anti-seize to the bolt threads.



- 3) Next, you will need to reset the latch nut. Remove the nut and latch hook from the latch body. Thread the hook back into the latch body then thread the nut onto the hook. Leave the latch hook loose for now.



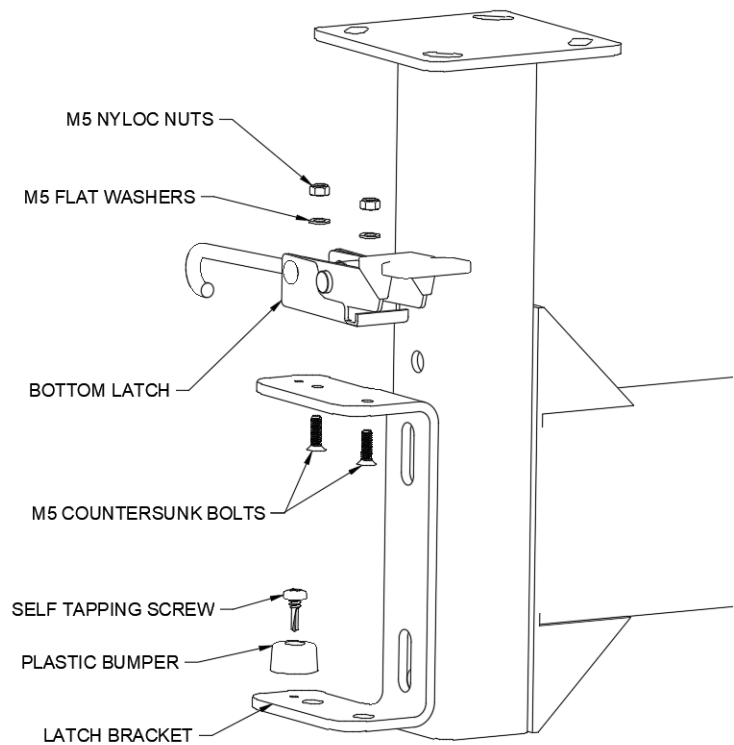


These instructions and the images herein are proprietary. Any unauthorized reproduction is prohibited.

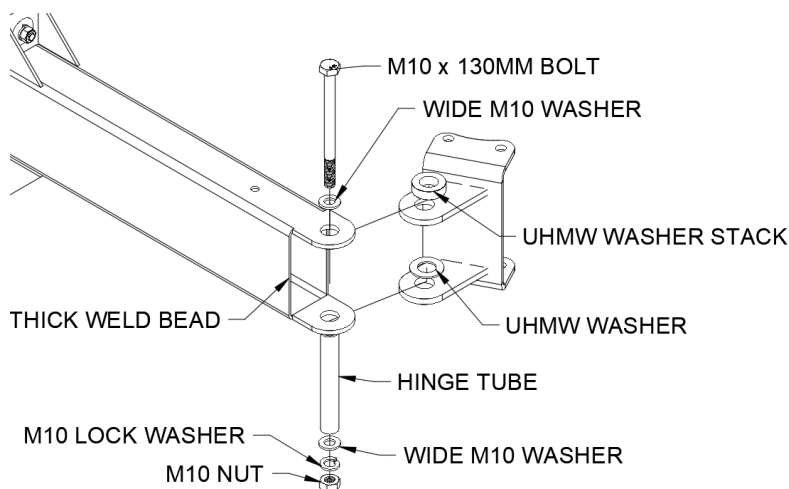
GW-B-SWING-ARM

Bus Bumper Swing Away
1973-79 T2

- 4) Now install the bottom latch using the countersunk M5 bolts and M5 nyloc nuts. Install the stiff plastic bumper using the self-tapping screw into the small hole. Make sure to apply anti-seize to the threads on the M5 bolts.



- 5) Connect the swing arm assembly to the hinge with the included hinge components. First, line up the holes with the UHMW plastic washers between the hinge and swing arm tabs. Stack seven washers on top of the upper tab and place a single washer on the lower tab. The tabs of the arm will rest on top of the UHMW washers, which will rest on top of the hinge tabs. Once these are lined up, insert the hinge tube into the hole to hold the assembly together. You may need to tap the hinge tube in with a rubber mallet or block of wood. Once the hinge tube is through all four tabs and washers, install the M10 x 130mm bolt with the wide M10 washers, lock washer, and nut. Apply anti-seize to the threads of the M10 bolt. Tighten down the M10 nut.





These instructions and the images herein are proprietary. Any unauthorized reproduction is prohibited.

GW-B-SWING-ARM

Bus Bumper Swing Away
1973-79 T2

- 6)** *This is the most critical step of the entire installation.* You will now drill holes in your bumper to mount the hinge assembly. As long as you double-check how everything lines up before drilling your holes it will be a piece of cake.

Place your swing away and hinge assembly on the bumper. The hinge will hug the end cap and the latch bracket will wrap around the bumper. Adjust and close the latch into the slot on the back of the bumper to loosely hold everything into place. If the latch is centered in the slot and the rubber bumpers are snug up against the bumper, you can adjust your bracket to sit flush and tangent up against the end of the bumper and mark the holes in the bracket on the top and bottom of the bumper end caps. This is where you want to step back for a moment and make sure you like where everything is sitting before marking and drilling your holes.

When you are happy with the alignment, mark, and drill the holes for the M8 hardware. A 3/8" bit works well for this. Finally, bolt up the top holes of the hinge to the bumper using the M8 Bolts, lock and flat washers, and M8 nuts. Don't forget the anti-seize!

We have included a template for these holes to help you locate the correct location for your bracket. If you use the template, make sure the latch is aligned with the slot on the back of the bumper, and make sure your existing hinge holes can line up with the holes on the template. You can tape down the template to test fit the hinge.



- 7)** To mark the holes on the bottom of the bumper, with the M8 bolts tightened down on the top, open the arm and pull down to gain some leverage and make sure the bracket is snug up against the bumper. Mark the holes, remove the upper bolts, and complete assembly and drill out the holes. Reinstall the hinge and install the top and bottom M8 bolts.





These instructions and the images herein are proprietary. Any unauthorized reproduction is prohibited.

GW-B-SWING-ARM

Bus Bumper Swing Away
1973-79 T2

- 8) Adjust your upright and latch bracket so that it opens and closes smoothly. You want the thrust tab on the back of the riser with the plastic fasteners to ride *just* above the top of the bumper. You will need to loosen the long M8 bolts, pull the riser up and tighten down the long M8 bolts to make this adjustment. The latch bracket upper tab needs to sit *above* the riser thrust tab. In other words, when you close the swing arm, nothing should contact the bumper, but the plastic fastener heads on the thrust tab will come into contact when you close the latch.



- 9) Open the swing arm fully and install one of the ball studs in the top of the arm with M8 flat and lock washer. Attach the piston end of the strut (skinny end) to this ball and adjust the swing arm so the strut is making a straight line from the ball stud, over the top of the M10 hinge bolt, and to the bumper. Make sure there is enough flat real estate for the M8 washer to sit flat where the ball stud will rest. Mark the location on the bumper where the other ball end will need to be installed. Drill a 5/16" hole in the bumper. Mount the ball stud to the bumper using one M8 nut, split lock washer, and the M8 washers (one on either side of the bumper). Pop the strut into place, and close the swing away!



Note: Make sure to hang onto the M8 bolts, flat and lock washers, and nuts to install the universal or tire carrier to your riser!

That's It... You're Ready to Accessorize!



These instructions and the images herein are proprietary. Any unauthorized reproduction is prohibited.

GW-B-SWING-ARM

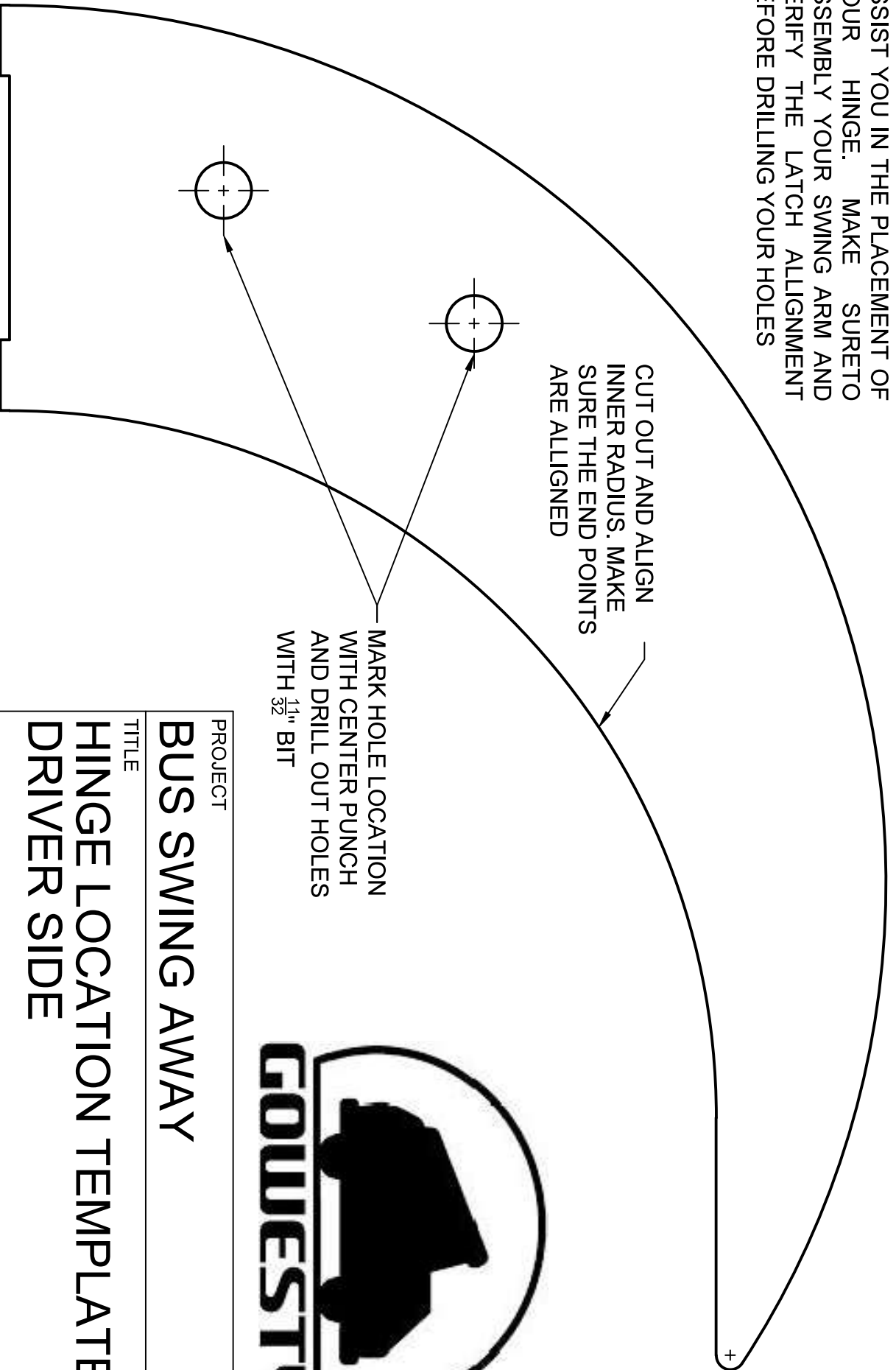
Bus Bumper Swing Away

1973-79 T2

NOTE
 THIS TEMPLATE IS PROVIDED TO ASSIST YOU IN THE PLACEMENT OF YOUR HINGE. MAKE SURE TO ASSEMBLY YOUR SWING ARM AND VERIFY THE LATCH ALIGNMENT BEFORE DRILLING YOUR HOLES

CUT OUT AND ALIGN INNER RADIUS. MAKE SURE THE END POINTS ARE ALLIGNED

MARK HOLE LOCATION WITH CENTER PUNCH AND DRILL OUT HOLES WITH $\frac{1}{32}$ " BIT



PROJECT
BUS SWING AWAY

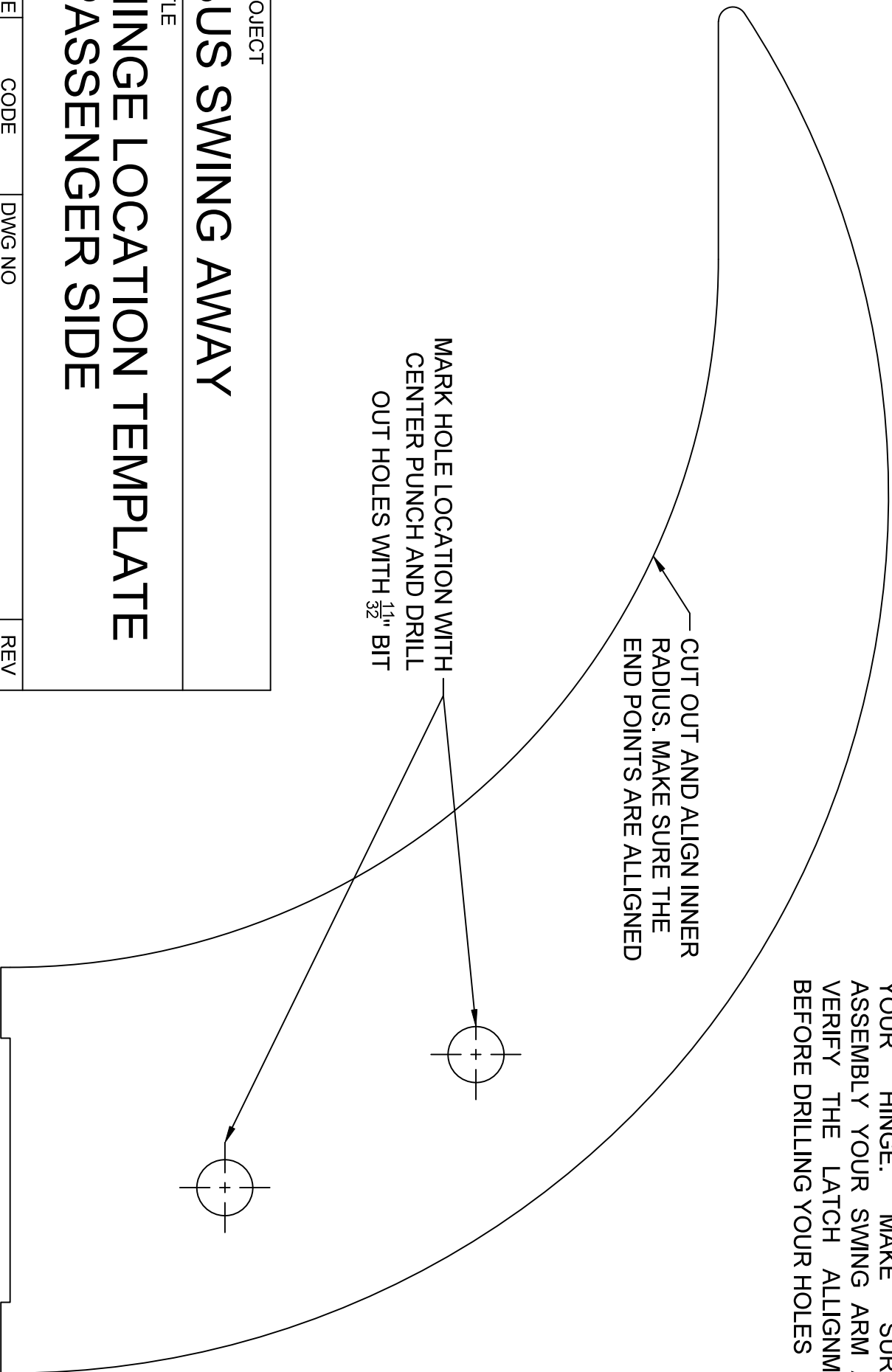
TITLE
**HINGE LOCATION TEMPLATE
 DRIVER SIDE**

SIZE	CODE	DWG NO	REV
A		BSA-HINGE-TEMPLATE	A
SCALE 1:1	WEIGHT	SHEET 1/2	

NOTE
THIS TEMPLATE IS PROVIDED TO ASSIST YOU IN THE PLACEMENT OF YOUR HINGE. MAKE SURE TO ASSEMBLY YOUR SWING ARM AND VERIFY THE LATCH ALIGNMENT BEFORE DRILLING YOUR HOLES

CUT OUT AND ALIGN INNER RADIUS. MAKE SURE THE END POINTS ARE ALLIGNED

MARK HOLE LOCATION WITH CENTER PUNCH AND DRILL OUT HOLES WITH $\frac{11}{32}$ " BIT



PROJECT
BUS SWING AWAY

TITLE
**HINGE LOCATION TEMPLATE
PASSENGER SIDE**

SIZE	CODE	DWG NO	REV
A		BSA-HINGE-TEMPLATE	A

SCALE 1:5 WEIGHT SHEET 2/2