



These instructions and the images herein are proprietary. Any unauthorized reproduction is prohibited.

GW-B-POPTOP-LIFT

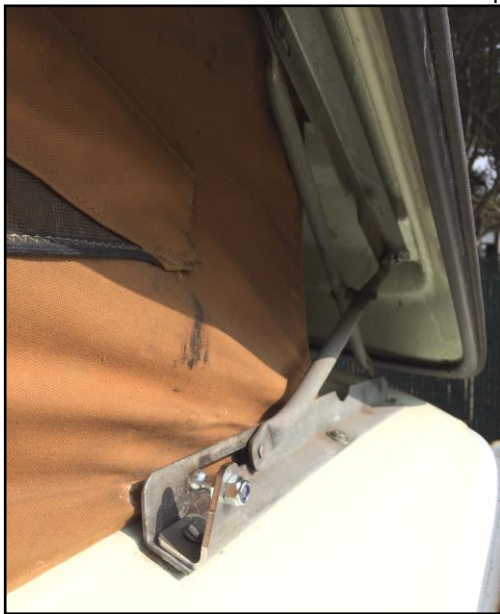
Bus Pop-Top Lift Assist Struts
1968-79 Westfalia Campers

GoWesty has provided struts to help raise your pop-top for many years. Now for the first time, these kits have been adapted for the Bus! This updated design eliminates the need to drill through the body and uses a more efficiently-positioned strut. This kit is perfect for unloaded or lightly loaded tops.

Tools Required	Hardware List	Parts List
<ul style="list-style-type: none">• 10mm Wrench or Socket• 13mm Wrench or Socket• 1/8" – 15/64" Drill Bit• Drill	(2) M6 x 20mm Bolt (4) M6 Nylock Nuts (4) M6 x 60mm Bolt (6) M6 SS Washer (2) Ball Stud Nut (2) Ball Stud (1) Packet Antiseize (1) Packet Silicone	(2) Vanagon Strut Bracket (2) 100 LB-Force Struts

Installation Instructions

- 1)** Begin by popping your top, removing the front 6mm bolt from the hinge, and installing the included pop-top bracket with the new longer M6 x 30mm bolt and M6 washer. Install the ball stud after you have installed the bracket. Make sure to apply antiseize to your SS hardware.



'68-'73 Pop-Top



'74-'79 Pop-Top Hinge

- 2)** Pop the strut onto the ball stud with the piston rod side (skinny end) down. Mount the upper bracket to the other end. Swing the strut and bracket up into place. The upper bracket ball stud should face away from the tent.





These instructions and the images herein are proprietary. Any unauthorized reproduction is prohibited.

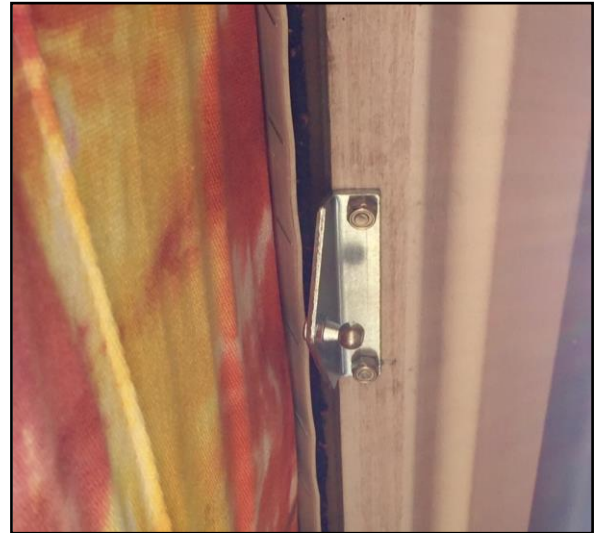
GW-B-POPTOP-LIFT

Bus Pop-Top Lift Assist Struts
1968-79 Westfalia Campers

- 3)** For the newer '74-'79 pop-top, position the bracket centered directly on the fiberglass. For the older '68-'73 pop-top, align the bracket on the wood frame. When selecting the spot for your bracket, it is okay if the strut is slightly underextended, but do not mount your bracket beyond the strut's extension capability. It is recommended that you drill the first hole, fasten the bracket, then drill the second hole while the bracket is installed. This will guarantee that the holes will be aligned. Mark the center of each mounting hole with a center punch and drill a pilot hole using a small ($\approx 1/8''$) drill bit. It is VERY important to drill the hole straight up through the top to ensure the holes come straight out on the flat of the roof. Working from the outside in, drill the hole out to its final dimension of $15/64''$. This is to prevent potential splintering of the fiberglass top as you push through with the drill bit.



'68-'73 Pop-Top



'74-'79 Pop-Top Hinge

- 4)** Install the 6mm x 45mm stainless bolts through the top using the stainless washers between the bolt and top. Apply silicone sealant between bolt head and washer as well as between the washer and top to ensure a weather tight seal. Install brackets and thread the 6mm Nylock nuts onto the bolts and tighten down until snug. Install strut to top bracket if you removed it to install bracket to top. Repeat steps 1-5 for the other side! Make sure to apply antiseize to your SS hardware.



That's It... You're Ready to Pop That Top!