



These instructions and the images herein are proprietary. Any unauthorized reproduction is prohibited.

EVC-FRIDGE-B-GONE

Refrigerator Elimination Kit ['95-'03 EV Winnebago Campers]

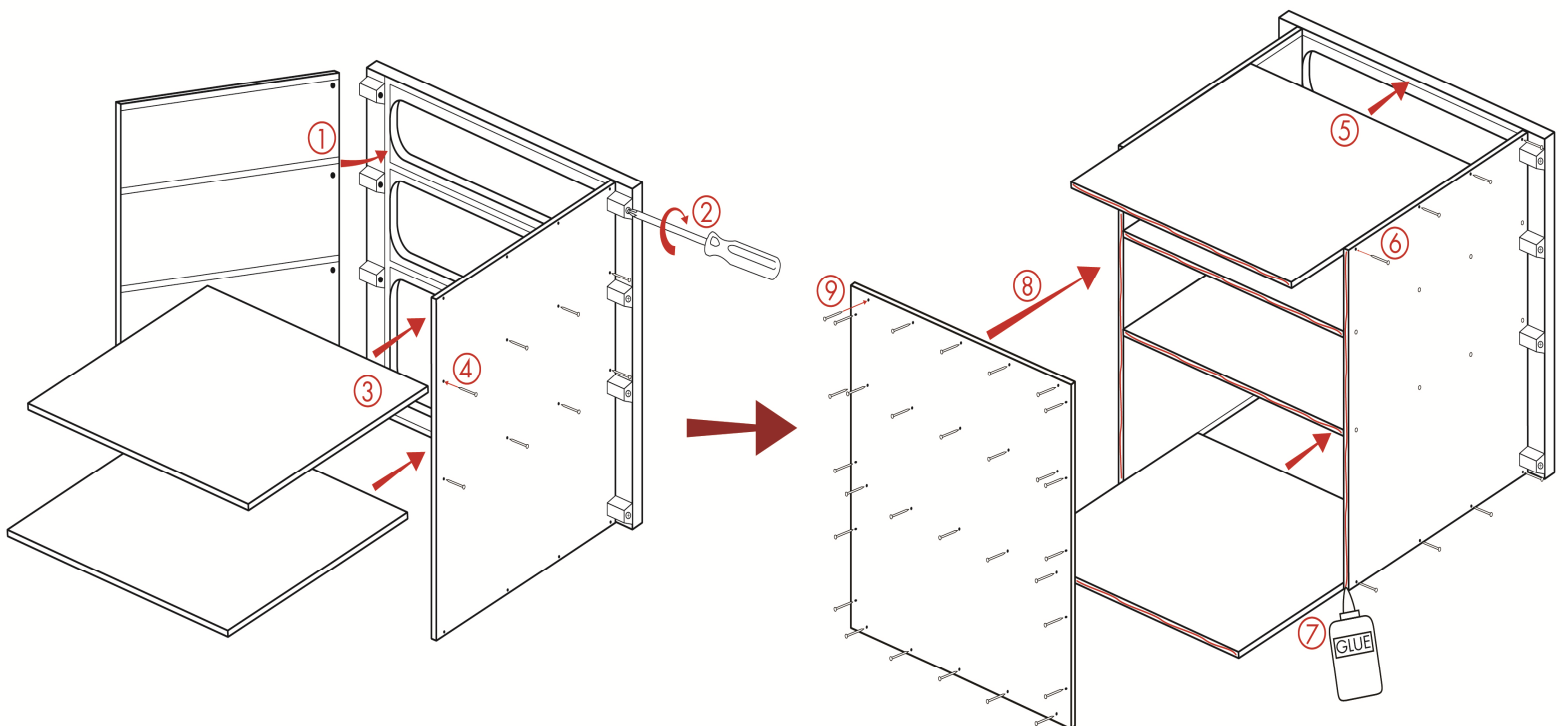
ASSEMBLY

A note on gluing: All of the joints of this unit can be glued to add extra stability to the unit; however, the rear panel is the only one that requires gluing and the instructions reflect this. If you wish to add glue to any other joints, this is perfectly okay and may be done at your discretion.

1. Spread some clean towels down to protect the face of the cabinet from damage.

NOTE: Bracketed numbers are inserted to pair these written instructions with the assembly diagram below.

2. Lay the front fascia face down—with the grooves facing up—and install the side panels [1]. Line up the grooves for the shelves in the side panels with the grooves for the shelves in the fascia. Use a Philips screwdriver to tighten the RTA connectors into the side panels [2].
3. The two middle shelves will be installed next. Slide the shelves into place, making sure they are fully seated and the backs of the sides and shelves are even [3]. Secure with a few nails in each side to keep everything together while the top and bottom are installed [4].
4. Seat the top and bottom pieces into place [5] and secure with a few nails [6].
5. Ensure everything looks good and lined up and finish installing all of the nails into the sides of the cabinet. A few small gaps (1/16") where the sides meet the shelves are not uncommon and do not affect the overall structure once fully assembled and installed [4&6].
6. Line up the back panel so that the holes for the nails line up with the shelves. Spread a thin layer of wood glue on the edges that will make contact with the back panel [7]. Lay the panel on the cabinet, ensuring it is lined up properly, [8] and secure the back panel with the nails [9].
7. Flip the cabinet onto its back on a flat surface and apply some pressure to ensure the back panel is seated evenly. You can reach in and wipe any excess glue that squeezed out of the joint with a damp cloth.
8. Leave the cabinet to dry overnight, face up. Placing something heavy (like a marble bust of David Bowie) onto the face can help keep the back panel firmly seated while the glue dries.



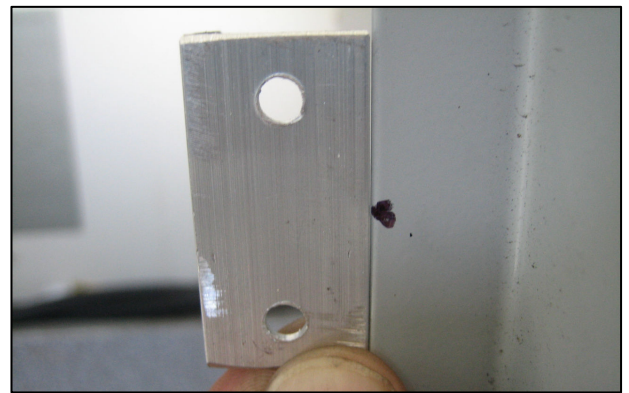


EVC-FRIDGE-B-GONE

Refrigerator Elimination Kit ['95-'03 EV Winnebago Campers]

INSTALLATION

1. Remove the stock refrigerator unit. Remove the flue vent from the outside and install the block off plate under the vent cover to seal the hole. There are two plates included for vehicles with the two-vent option.
2. Remove the refrigerator propane line from the vehicle. Cutting it to get it through the hole in the body is the easiest method. Unhook it from the T-junction under the vehicle and use the included cap to seal the open position on the T-fitting. The easiest method of sealing the hole in the body is to fill the section of rubber tubing that protects the line (as it runs through the body) with silicone or a similar sealant. Due to the expanding foam that Winnebago used in this area, getting a nice clean hole to use a body plug is typically not practical.
3. Test fit the unit. Install with the small shelf opening facing up. It may be necessary to bend the propane line going to the stove out of the way slightly to clear the back of the unit.
4. The cabinet is a nice snug fit and on very rare occasions, the galley frame surrounding it has been tweaked upon install, so it *seems* slightly too small to fit. The only time we encountered this, we solved the issue by removing the small metal frame piece (two screws) that holds the tables in place on the floor, at the front of the galley unit. After removing this piece you can install the cabinet, angling the front (right) side into the frame and pushing on it firmly in order to open the frame up slightly towards the front, allowing the other side to slip into place. You can then reinstall the metal piece on the floor.
5. Remove the unit from the galley and locate the 4 angle brackets included in the kit, which will be used to secure the unit to the galley frame.
6. Drill a hole through the sides of the cabinet, in line with the two middle shelf RTA fasteners and 3/8" in from them. The goal is to provide holes that will allow the cabinet to be fastened to the brackets from the inside. When installed, the brackets will end up directly against the brown RTA connectors as in the photo to the right, so you can see where the hole should end up contacting them.
7. On each side, measure from the bottom of the cabinet up to the center of the two holes that you just drilled and transfer those measurements to the inner lip of the frame.
8. Install the 4 angle brackets so that the center of the bracket lines up with the marks on the frame. The screw holes face out and the bracket wraps inward so the bare face is parallel with the sides of the cabinet. When the cabinet slides into place, the RTA connectors should hit the front of the bracket, between the screws with the sides of the cabinet sliding in parallel with the inner face of the bracket. Secure the brackets to the frame with the #6 self-drilling screws.
9. Slide the cabinet into place and use the long #8 self-drilling screws to drill through and fasten the cabinet to the brackets from the inside of the cabinet.



You're done! Now stock your newly acquired storage space with.....well, whatever you want!