



These instructions and the images herein are proprietary. Any unauthorized reproduction is prohibited.

## GW-B-SWING-UNI

Bus Bumper Swing Away Universal Carrier  
1973-79 T2

After many requests and a handful of prototypes, we are happy to introduce a swing away system for your Bus! This system bolts right onto the GoWesty heavy-duty bumper and can be customized with showers, storage boxes, fuel tanks, water tanks, storage trays, bike racks, spare tires, in any combination you can put together.

Hardware List		Parts List
(1) Internal Hex M8 Bolt	(3) M5 SS Nuts	Universal Carrier
(1) Protective Film	(3) M5 SS Lock Washer	Top Latch
(1) Gutter Mount Trim	(1) M5 X 10 SS Bolt	Rubber Bumper
(2) M5 x 16mm SS Phillips Head Screw	(4) M5 Flat Washer	Gutter Mount Brackets

**IMPORTANT INSTALLATION NOTE:** USE ANTI-SEIZE COMPOUND ON ALL STAINLESS-TO-STAINLESS FASTENER JUNCTIONS! When installing stainless fasteners together, they tend to bind up. When this happens there is usually no recourse except to cut them off and start over with fresh fasteners. Using Anti-Seize Compound prevents this from happening, so don't skimp on the anti-seize, and don't forget it!

The installation of this kit is not within everyone's ability. While it is not overly complex, it does involve careful measuring and drilling. Read through these instructions thoroughly and decide if installing it is for you. If not, please take this product to your local automotive professional.

Make the most out of your swing-away with our wide range of available add-ons.

- [Spare-Tire Carrier](#)
- [Reverse Spare Tire](#)
- [Reverse Spare Lockable Storage](#)
- [Storage Box](#)
- Universal Rungs
- [Yakima Upright Bike Racks](#)
- [Storage Tray](#)
- [Small Shower](#)
- [Storage Box Tie Downs](#)
- [Spare Tire Trasharoo](#)
- [RotoPax Mount](#)





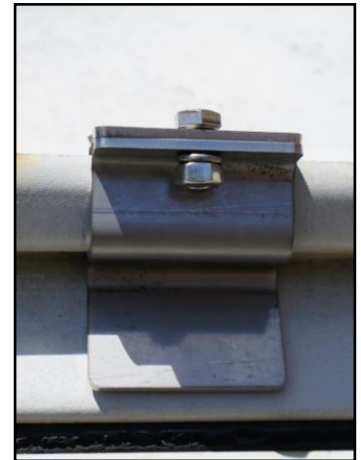
These instructions and the images herein are proprietary. Any unauthorized reproduction is prohibited.

## GW-B-SWING-UNI

Bus Bumper Swing Away Universal Carrier  
1973-79 T2

### Installation Instructions

- 1) Make sure you have installed a GoWesty heavy-duty Bus bumper and Bus swing arm before beginning the universal carrier installation.
- 2) Install the rubber bumper into the rivnut on the back face of the universal carrier just below the latch. You will fasten the bumper using the internal hex M8 bolt.
- 3) Install the upper latch on the latch plate welded to the universal carrier using the M5 stainless steel phillips head screws, M5 flat and lock washers, and the M5 Nuts. Place the phillips head on the top of the latch plate facing downward. This will ensure that the ends of the bolts don't interfere with the latch. Don't forget the anti-seize.
- 4) Insert the 8 round plastic plugs into the universal carrier. (if you are not installing rungs) Insert the square plastic plug into the top of the universal carrier. You will need to tap this in with a mallet.
- 5) Close and latch the swingarm. Install the universal carrier on top of the riser using the M8 bolts, lock washers, standard washers, and nuts. Loosely thread these nuts. Don't forget the anti-seize!
- 6) Install the rubber trim on the upper gutter mount bracket where the lip contacts the gutter. Install the upper and lower bracket and loosely thread the M5 bolt, lock washer, and nut through the hole. Apply anti-seize to the threads. Line up the gutter mount bracket with the upper latch.
- 7) Slide the latch bracket aside and apply the protective film underneath the bottom latch bracket. Slide the latch bracket back into place and tighten the M5 nut and bolt.





These instructions and the images herein are proprietary. Any unauthorized reproduction is prohibited.

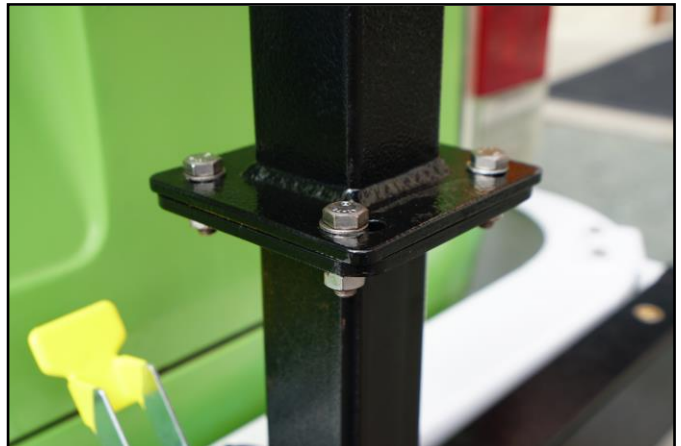
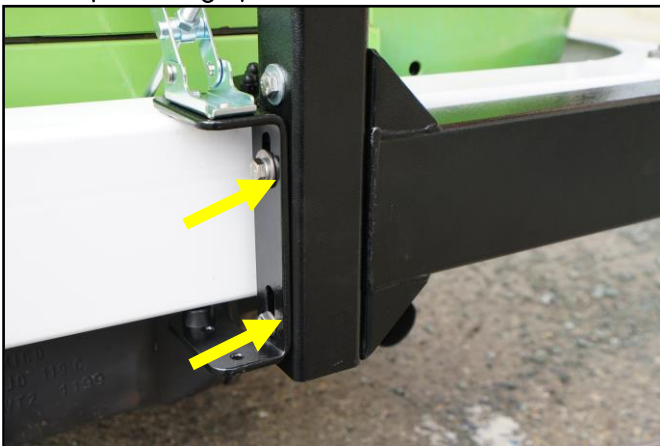
## GW-B-SWING-UNI

Bus Bumper Swing Away Universal Carrier  
1973-79 T2

- 8)** Adjust the M8 bolts that join your universal carrier to the riser so that the rubber bumper compresses slightly against the bus when you close the latch. When both latches are closed, there should be compression on the lower and upper bumpers. There should be no play in the system if you grab the universal carrier and give it a good shake, or put your weight on the end of the tray. Once you have found the right spot, tighten the M8 nuts and bolts holding the universal carrier to the riser.



- 9)** Double-check that your system opens and closes without any interference. There are two adjustment points to allow the system to operate smoothly. You can adjust long M8 bolts attaching the riser to the swingarm. (below left), and then the four bolts through the slotted holes to adjust the unicarrier (below right)



**That's It... You're Ready to Accessorize!**