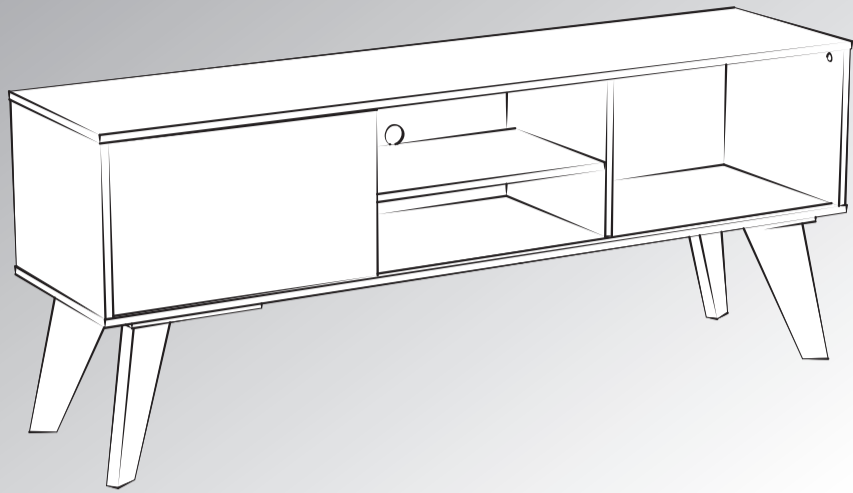
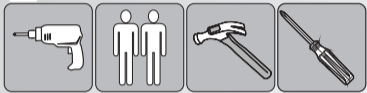


Rödler

MANUAL DE ARMADO



Não acompanha ferramentas

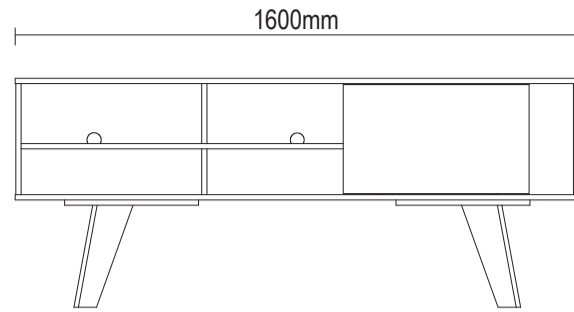


www.rodler.cl

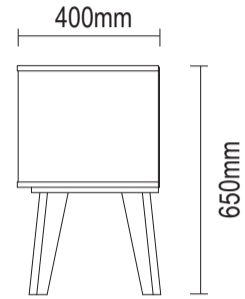
Rack Vip II

Rack Vip II / Vip II Rack

Versão 1.1 / Versión 1.1 / Version 1.1



frente/frente/front



lateral/lado/side

Conservação e Limpeza

Conservación y Limpieza Conservation and Cleaning

Não expor o produto ao sol, altas temperaturas e umidade. Não arrastar objetos sobre a superfície do móvel (ex.: TV, DVD, aparelho de som, objetos decorativos...) e manter em local seco e arejado.

Para a limpeza, utilizar um pano seco e macio. Não é necessário o uso de materiais abrasivos ou álcool.

No exponga el producto a la luz solar, las altas temperaturas y la humedad. No arrastre los objetos a través de la superficie de la unidad (por ejemplo, TV, DVD, equipo de música, objetos de decoración ...) Mantener en un lugar fresco y seco.

Para la limpieza, utilizar un paño seco y suave. El uso de materiales abrasivos o del alcohol no es necesario.

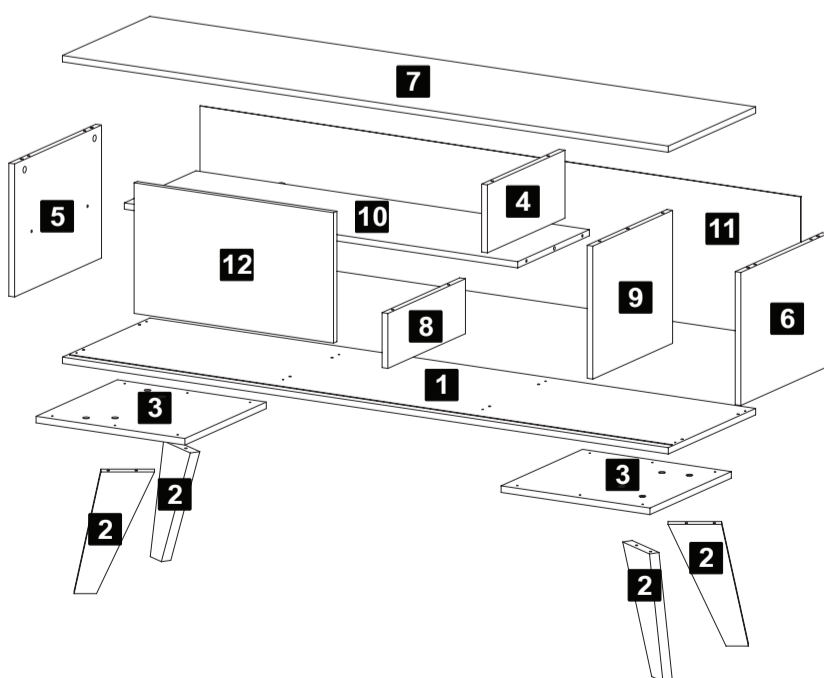
Do not expose the product to sunlight, high temperatures and humidity. Do not drag objects across the surface of the unit (TV, DVD, stereo, decorative objects ...) keep it in a cool dry place.

For cleaning, use a dry and soft cloth. Do not use abrasive materials or alcohol.

Lista de Materiais Lista de Materiales/ Hardware List

A		Cavilha / Tarugo / Dowel Ø6x30mm	24
B		Minifix / Minifix / Minifix Ø7x30mm	07
C		Tambor / Tambor / Minifix Cam Ø15x12mm	07
D		Tapa furo adesivo / Adhesivo / Hole Cover Ø18mm	06
E		Parafuso / Tornillo / Screw Ø3,5x40mm CP	08
F		Prego / Clavo / Nail 8x8	28
G		Sapata Fixa / Pata Fija / Fixed Foot Ø5x10mm	04

J		Parafuso / Tornillo / Screw Ø5,0x24mm	12
K		Parafuso / Tornillo / Screw Ø7,0x50mm	08
L		Chave Zeta / Clave Zeta / Allen Key	01
M		Cola / Pegamento / Glue	01
N		Kit porta de correr Kit Puerta Deslizante Sliding Door Kit	01

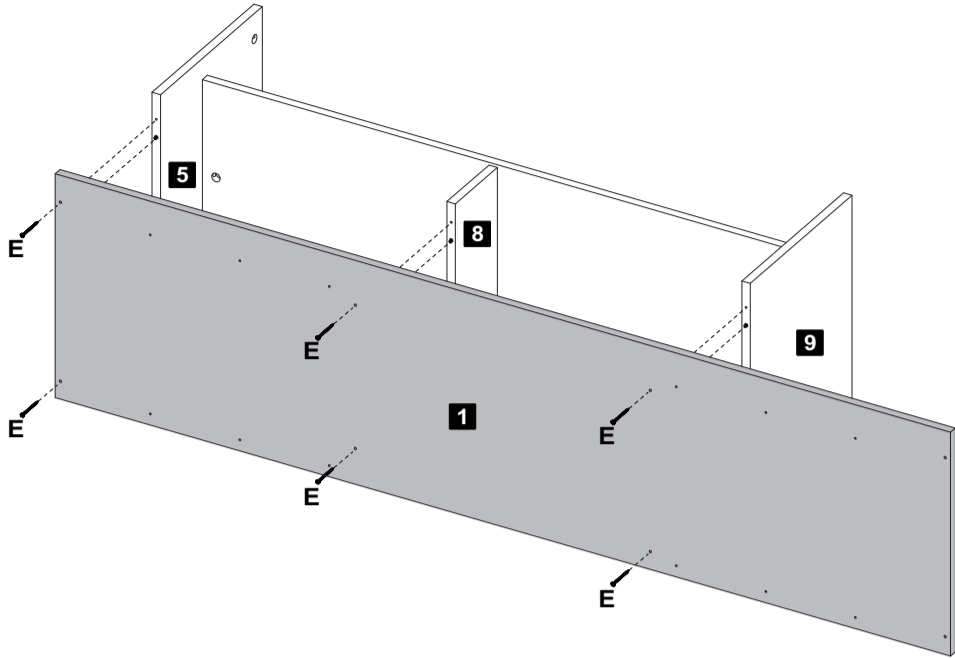


Peça 01 - O número na borda da peça corresponde ao manual.
- Para retirada do número usar Lustra-Móveis ou Alcool em Gel.

Peça - Cor de borda
Azul (Lateral direita) Azul (Lateral derecha) Blue (Right side)
Vermelho (Lateral esquerda) Rojo (Lateral izquierda) Red (Left side)
Preto (Divisão direita) Negro (División derecha) Black (Right partition)
Verde (Divisão esquerda) Verde (División izquierda) Green (Left partition)

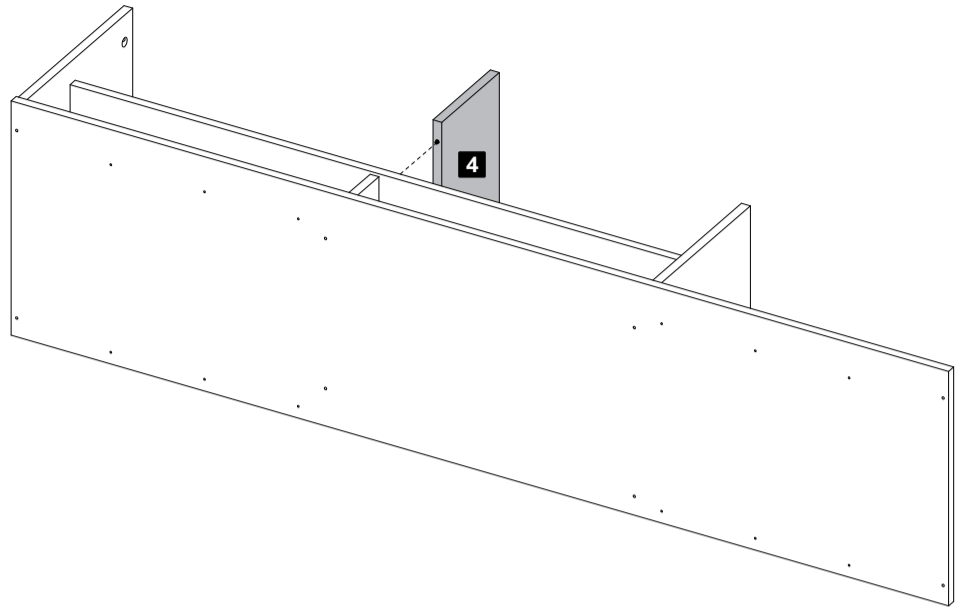
Descrição	Descripción	Description
1-Base (1600x400x15mm)	1-Base	1-Base
2-Pé (320x120x25mm)	2-Pie	2-Foot
3-Suporte lateral (360x380x15mm)	3-Titular lateral	3-Side holder
4-Divisão esquerda sup. (170x355x15mm)	4-División izquierda superior	4-Upper left partition
5-Lateral esquerda (315x398x15mm)	5-Lateral izquierda	5-Left side
6-Lateral direita (315x398x15mm)	6-Lateral derecha	6-Right side
7-Tampo (1600x400x15)	7-Tapa	7-Top
8-Divisão esquerda (130x355x15mm)	8-División izquierda	8-Left partition
9-Divisão direita (315x365x15mm)	9-División derecha	9-Right partition
10-Prateleira (1039x328x15mm)	10-Anaque	10-Shelf
11-Traseira (1586x340x3mm)	11-Trasera	11-Back
12-Porta (309x527x15mm)	12-Puerta	12-Door

7 Passo
Paso
Step

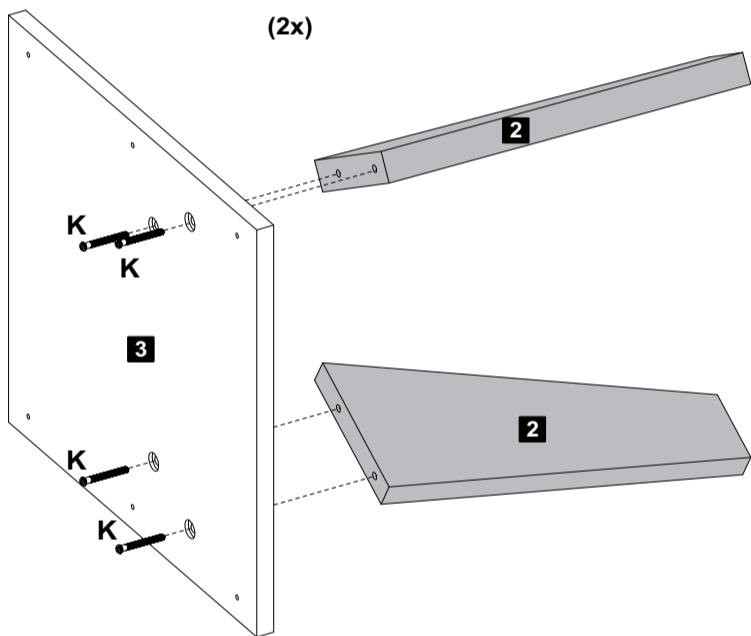


E Parafuso 03,5x40mm CP 06

8 Passo
Paso
Step

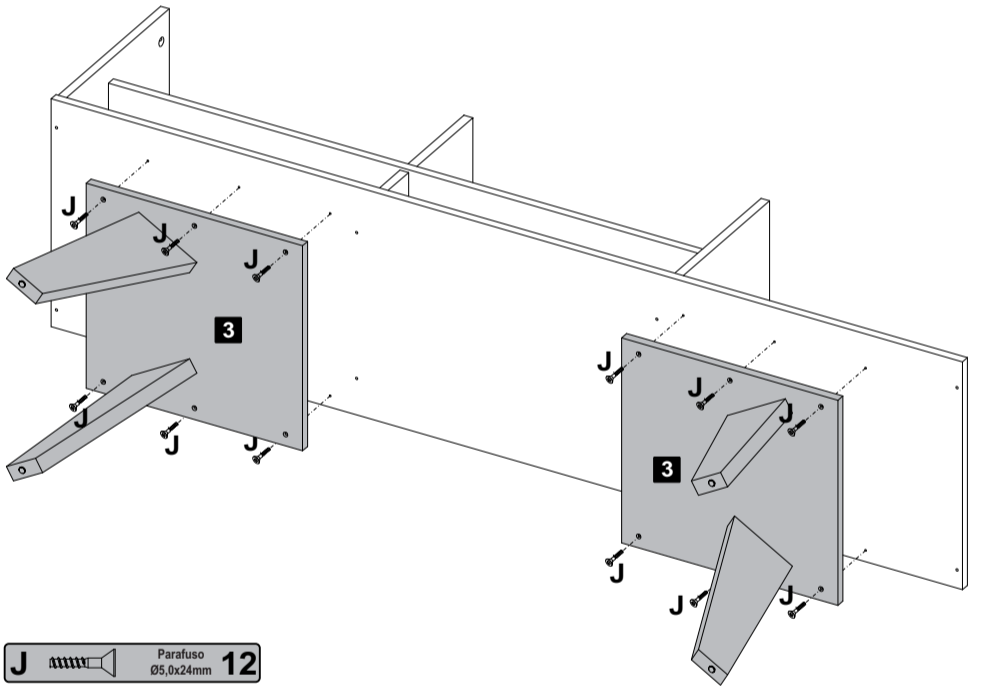
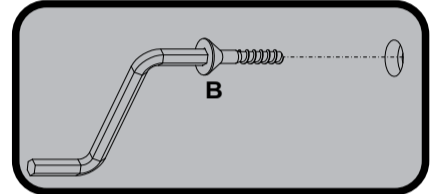


9 Passo
Paso
Step



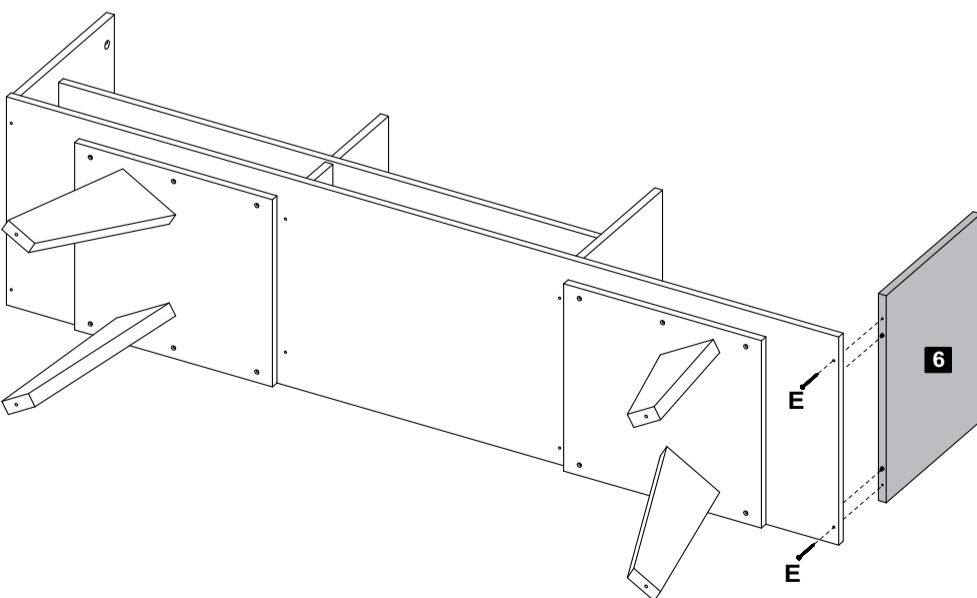
K Parafuso 07,0x50mm 08

10 Passo
Paso
Step



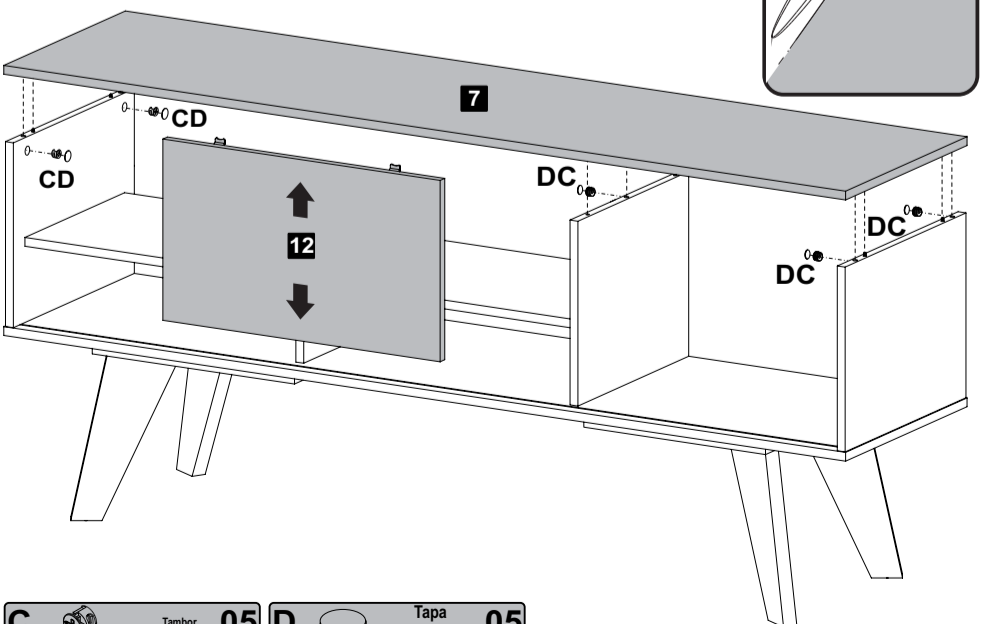
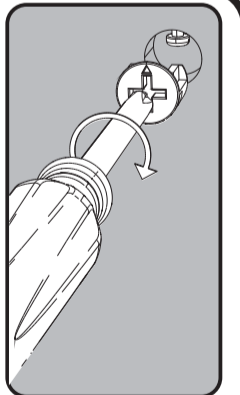
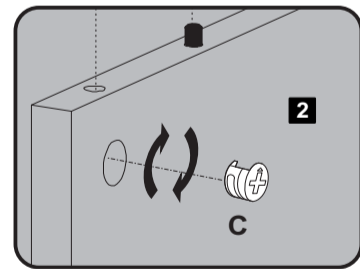
J Parafuso 05,0x24mm 12

11 Passo
Paso
Step



E Parafuso 03,5x40mm CP 02

12 Passo
Paso
Step

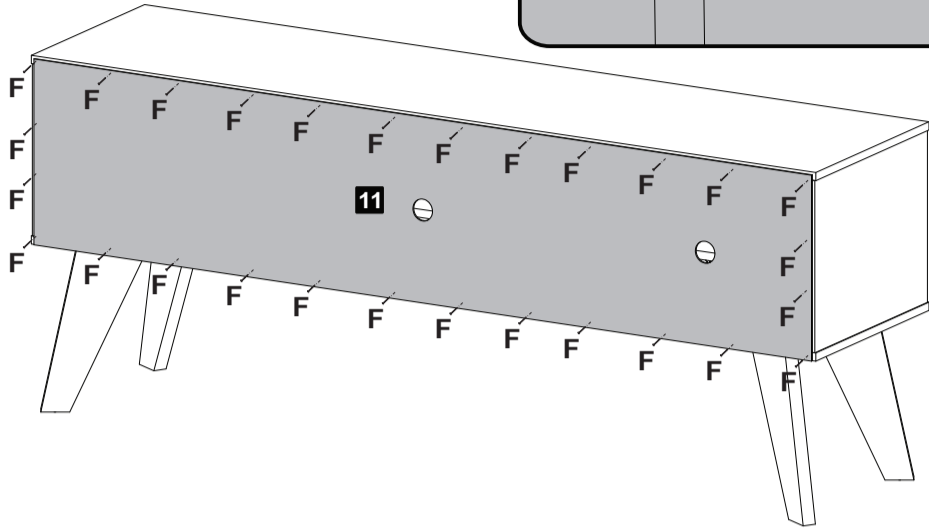
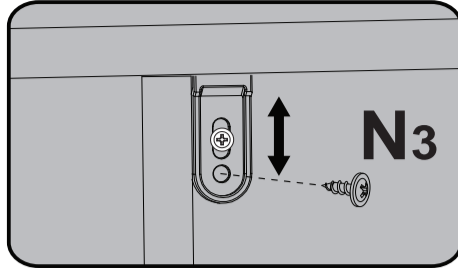



C Tambor 05 D Tapa Furo Adesivo 05

13 Passo
Paso
Step

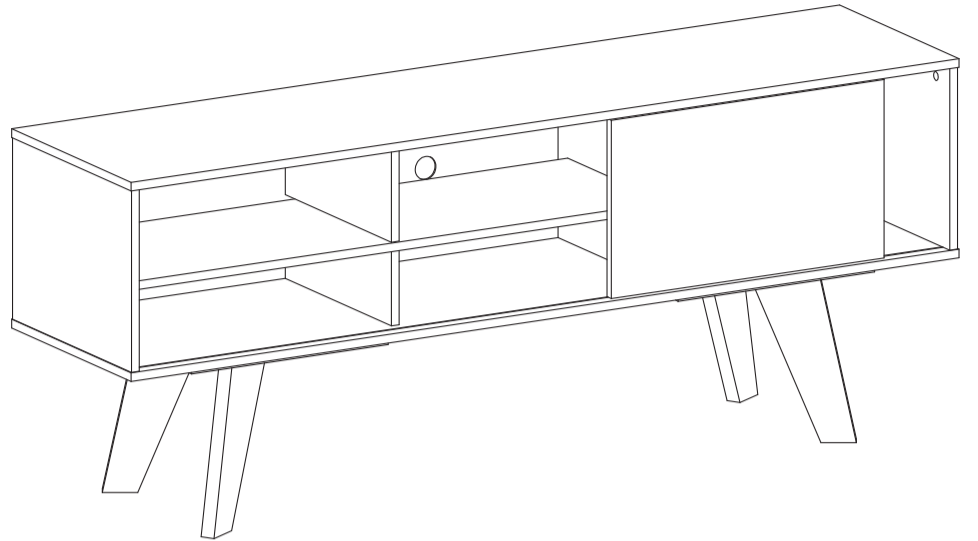


-Para finalizar esse passo, ajuste as guias das portas para que a mesma fique deslizando corretamente, por final fixa por completo.
-Antes de colocar la parte trasera, ajuste las guías de la puerta para que la misma deslice correctamente.
-Before attaching the back, adjust the door guides to slide properly.



F  Tambo 28

14 Passo
Paso
Step



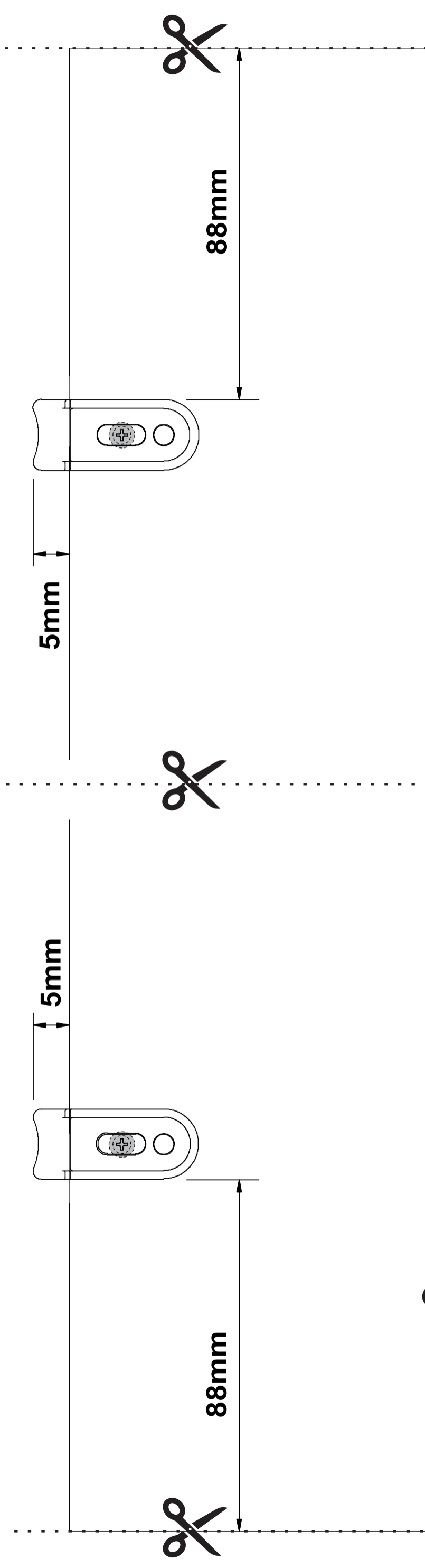
Röodler

www.rodler.cl

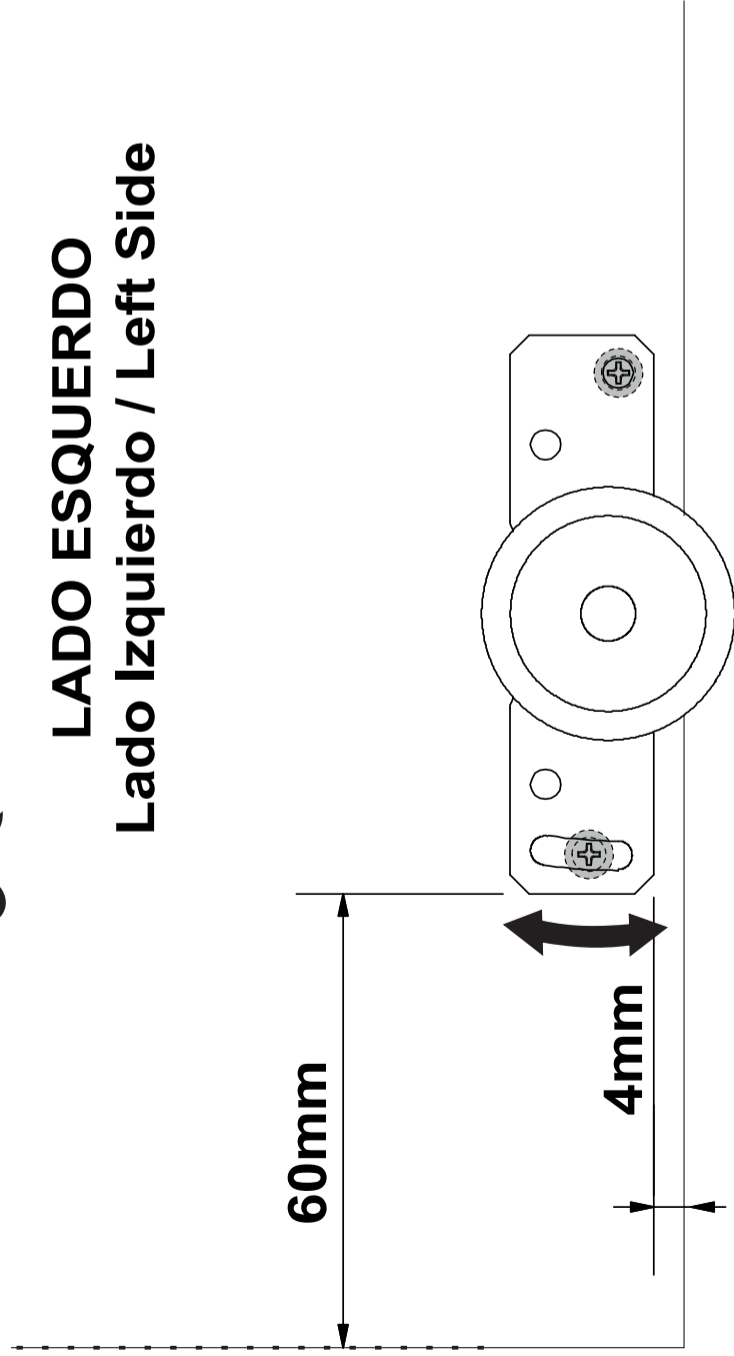
Gabarito da Porta

Plantilla de la Puerta / Door Mounting Template

Rack Vip



LADO ESQUERDO Lado Izquierdo / Left Side



LADO DEREITO Lado Derecho / Right Side

