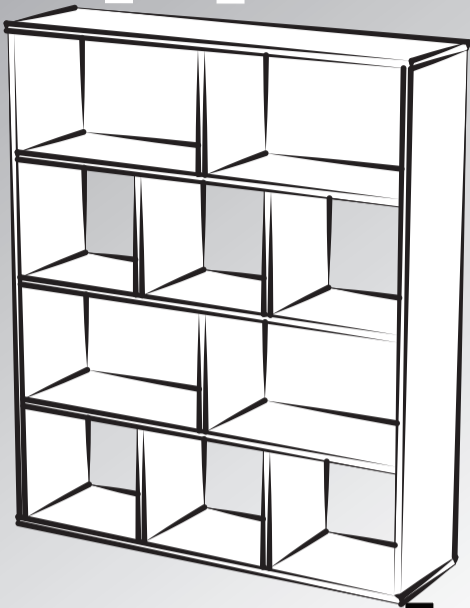


Rödler **MANUAL DE ARMADO**



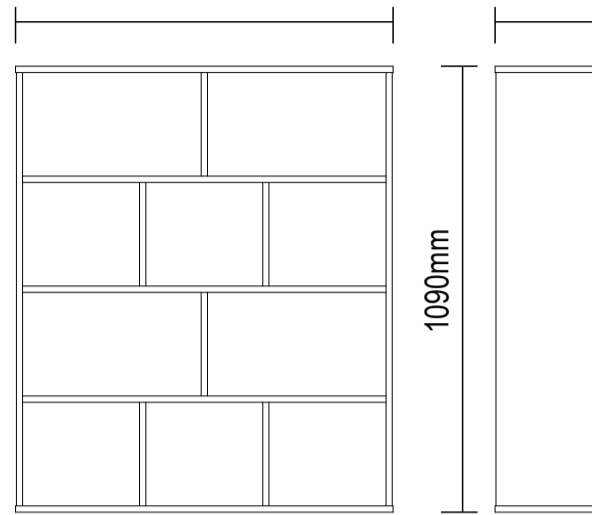
Estante Book

www.rodler.cl

Estante Book / Book Wall Units
Versão 1.0 / Versión 1.0 / Version 1.0

910mm

250mm



frente

lateral

Conservação e Limpeza

Conservación y Limpieza Conservation and Cleaning

Não expor o produto ao sol, altas temperaturas e umidade. Não arrastar objetos sobre a superfície do móvel (ex.: TV, DVD, aparelho de som, objetos decorativos...) e manter em local seco e arejado.

Para a limpeza, utilizar um pano seco e macio. Não é necessário o uso de materiais abrasivos ou álcool.

No exponga el producto a la luz solar, las altas temperaturas y la humedad. No arrastre los objetos a través de la superficie de la unidad (por ejemplo, TV, DVD, equipo de música, objetos de decoración ...) Mantener en un lugar fresco y seco.

Para la limpieza, utilizar un paño seco y suave. El uso de materiales abrasivos o del alcohol no es necesario.

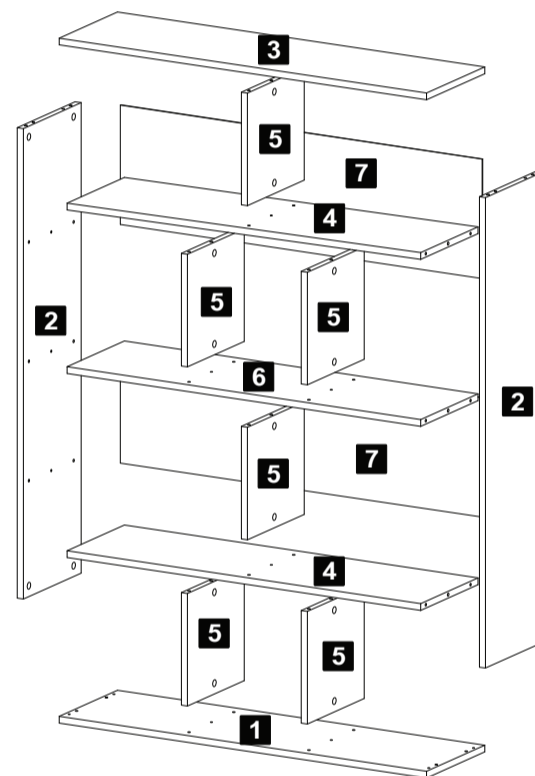
Do not expose the product to sunlight, high temperatures and humidity. Do not drag objects across the surface of the unit (TV, DVD, stereo, decorative objects ...) keep it in a cool dry place.

For cleaning, use a dry and soft cloth. Do not use abrasive materials or alcohol.



Lista de Materiais Lista de Materiales/ Hardware List

A		Cavilha	44
B		Minifix	26
C		Tambor	26
D		Tapa Furo Adesivo	20
E		Prego 8x8	30
F		Sapata 40x18mm	08
G		Cola	01



Descrição

- 1-Base (910x250x15mm)
- 2-Lateral (1045x248x15mm)
- 3-Tampo (910x250x15mm)
- 4-Prateleira (876x246x15mm)
- 5-Divisão (250x244x15mm)
- 6-Prateleira central (876x246x15mm)
- 7-Traseira (896x265x3mm)

Descripción

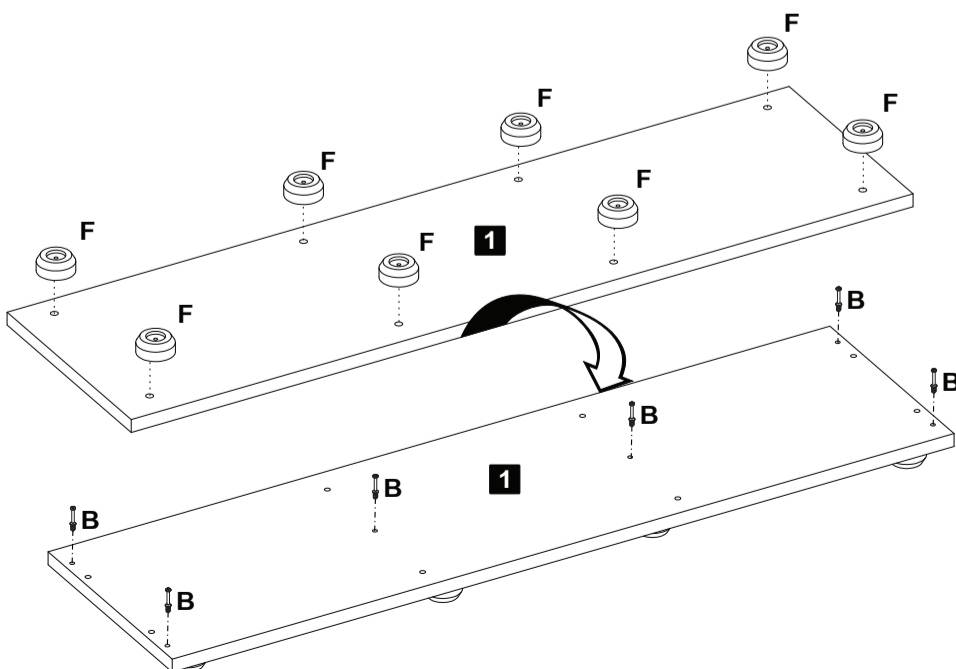
- 1-Base
- 2-Side
- 3-Top
- 4-Shelf
- 5-Partition
- 6-Center shelf
- 7-Back

Description

- 1-Base
- 2-Side
- 3-Top
- 4-Shelf
- 5-Partition
- 6-Center shelf
- 7-Back

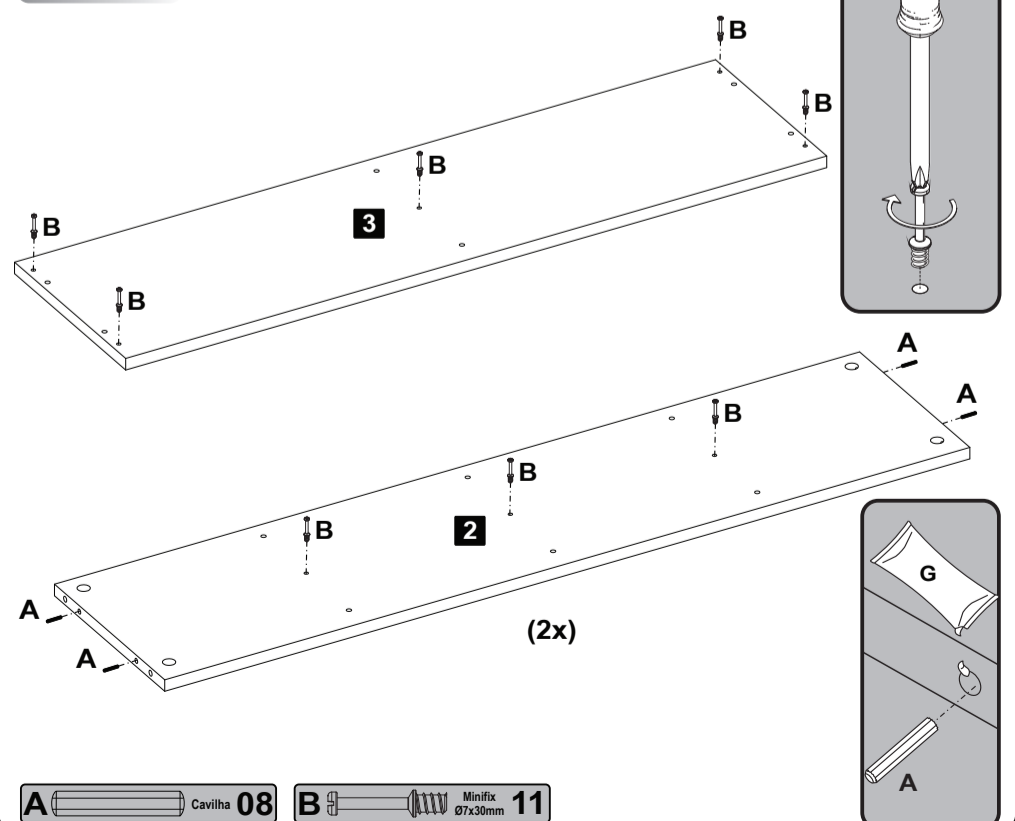
Peça 01 - O numero na borda da peça corresponde ao manual.
- Para retirada do numero usar Lustra-Móveis ou Álcool em Gel.

1 Passo Paso Step



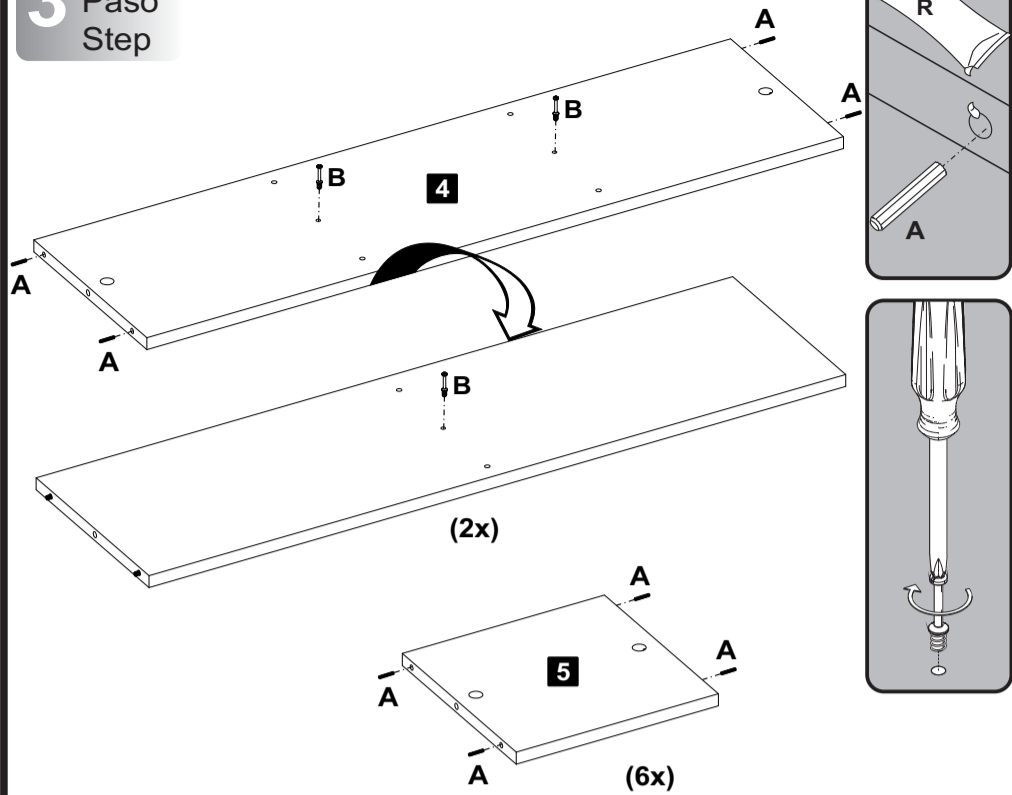
B Minifix 07x30mm **06** **F** Sapata 40x18mm **08**

2 Passo Paso Step



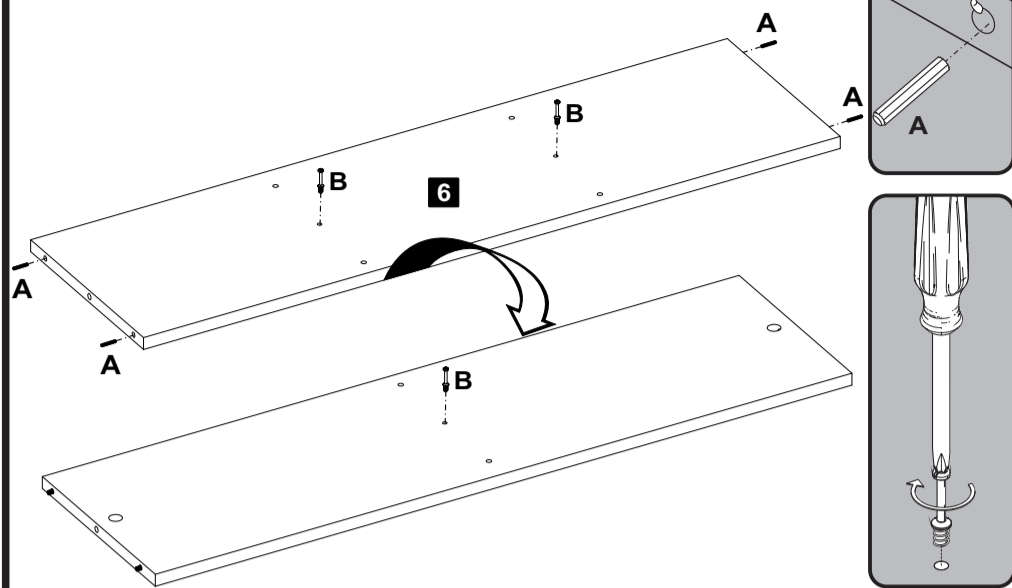
A Cavilha **08** **B** Minifix 07x30mm **11**

3 Passo
Paso
Step



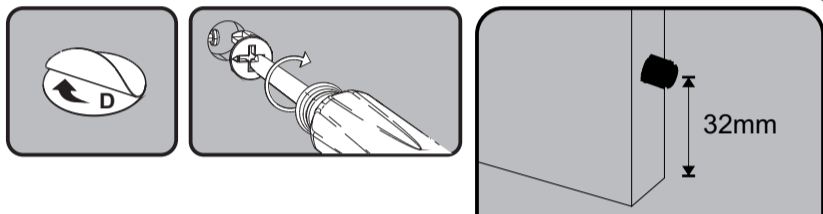
A Cavilha 32 **B** Minifix Ø7x30mm 06

4 Passo
Paso
Step

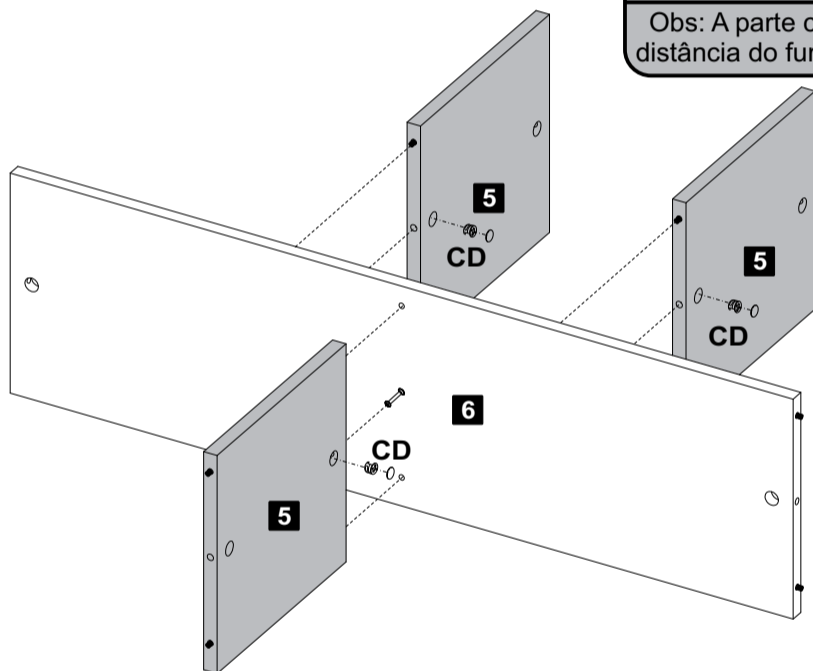


A Cavilha 04 **B** Minifix Ø7x30mm 03

5 Passo
Paso
Step

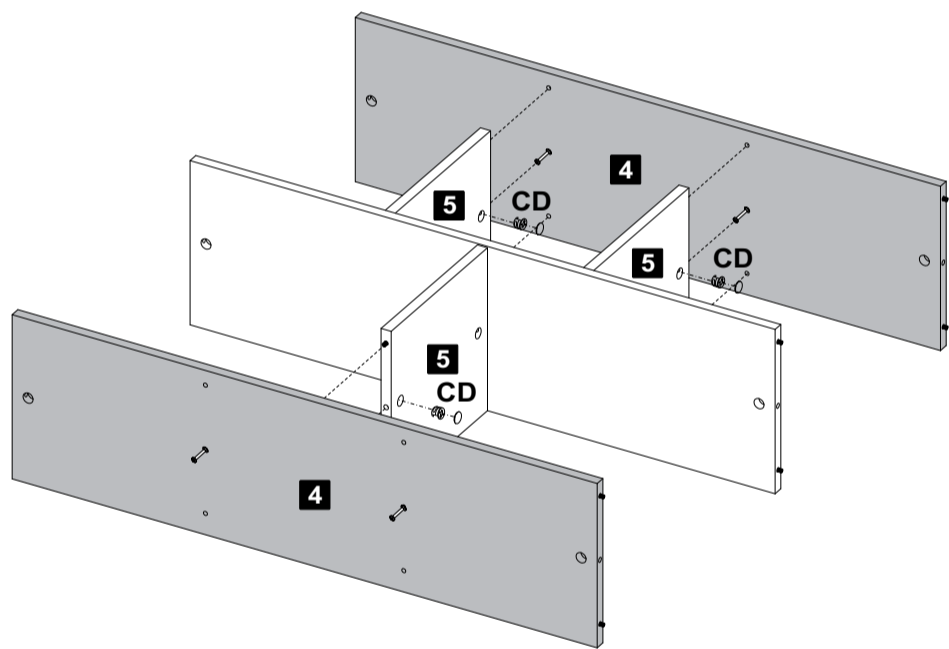
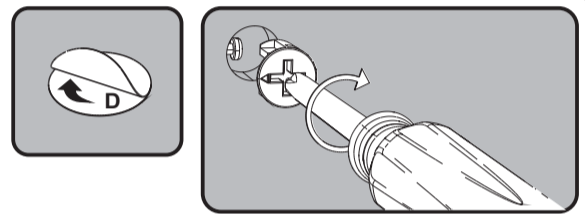


Obs: A parte com a maior distância do furo para baixo



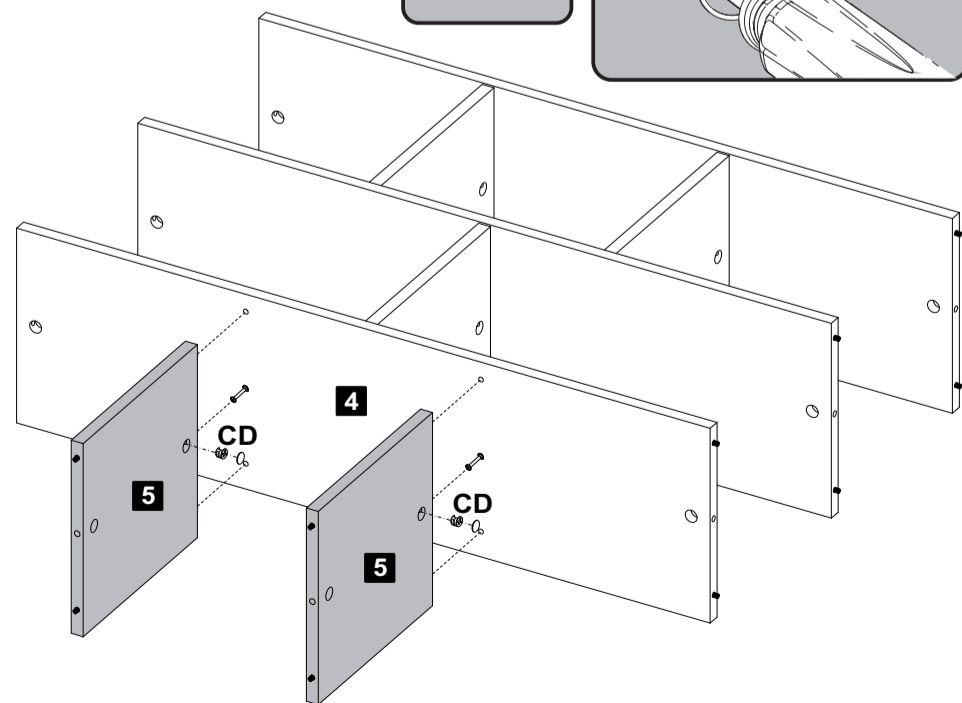
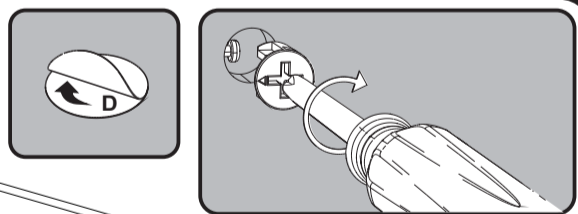
C Tambor 03 **D** Tapa Furo Adesivo 03

6 Passo
Paso
Step



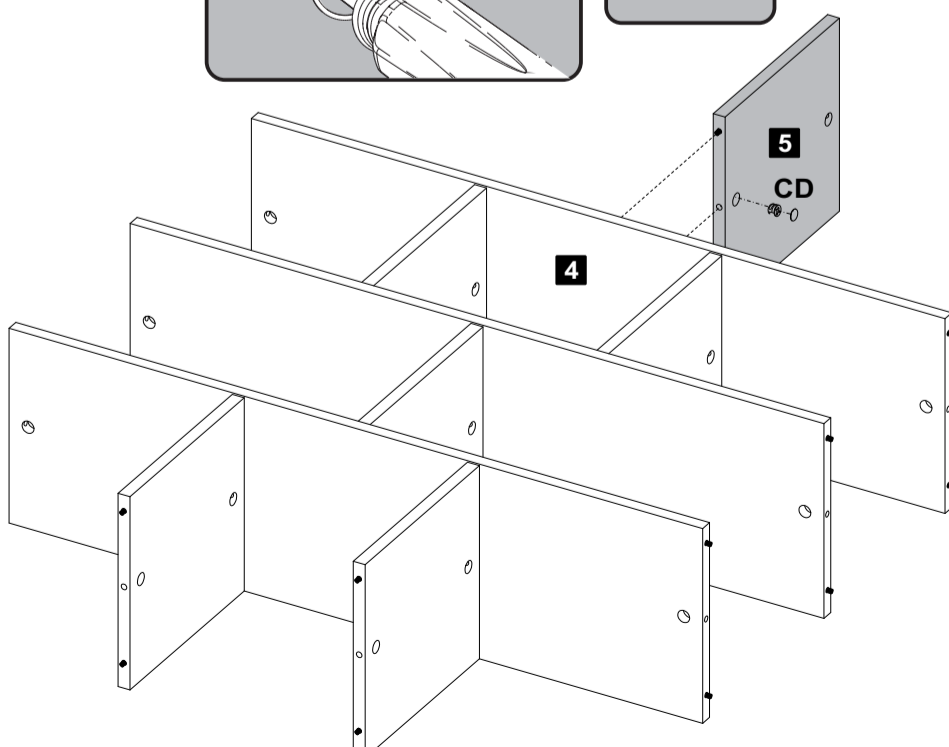
C Tambor 03 **D** Tapa Furo Adesivo 03

7 Passo
Paso
Step



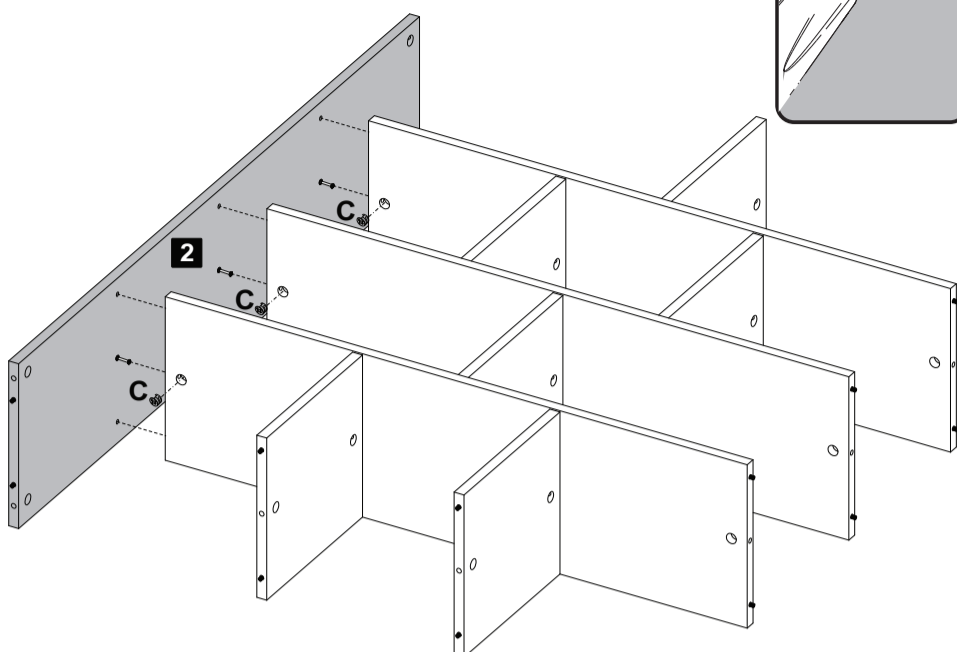
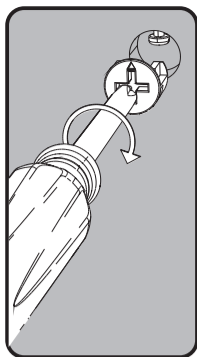
C Tambor 02 **D** Tapa Furo Adesivo 02

8 Passo
Paso
Step



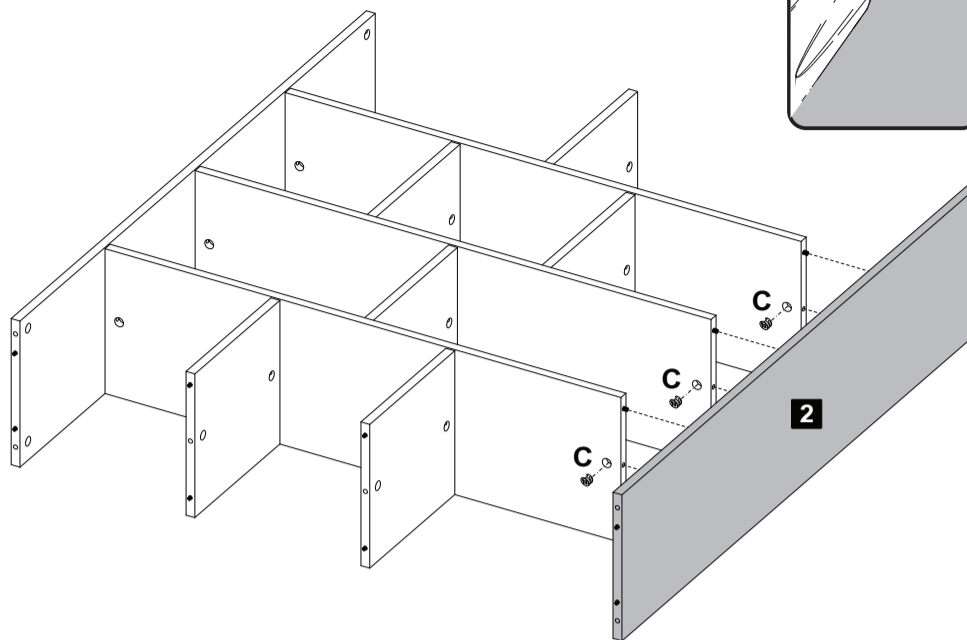
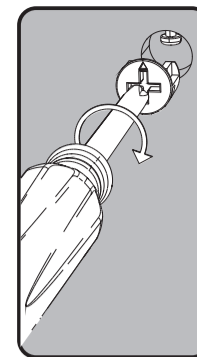
C Tambor 01 **D** Tapa Furo Adesivo 01

9 Passo
Paso
Step



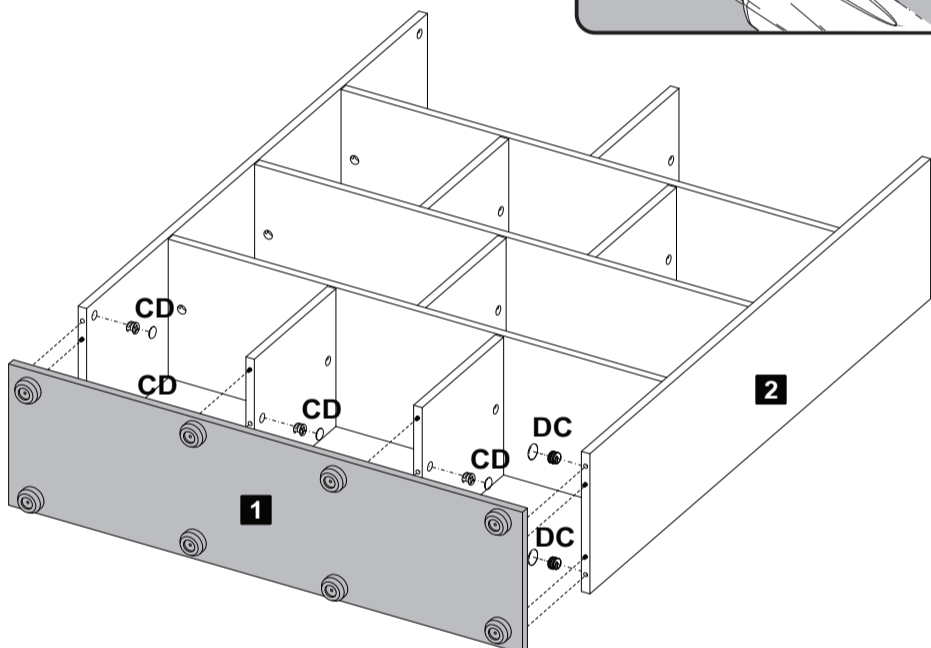
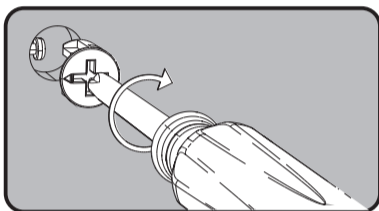
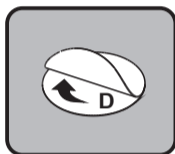
C Tambor 03

10 Passo
Paso
Step



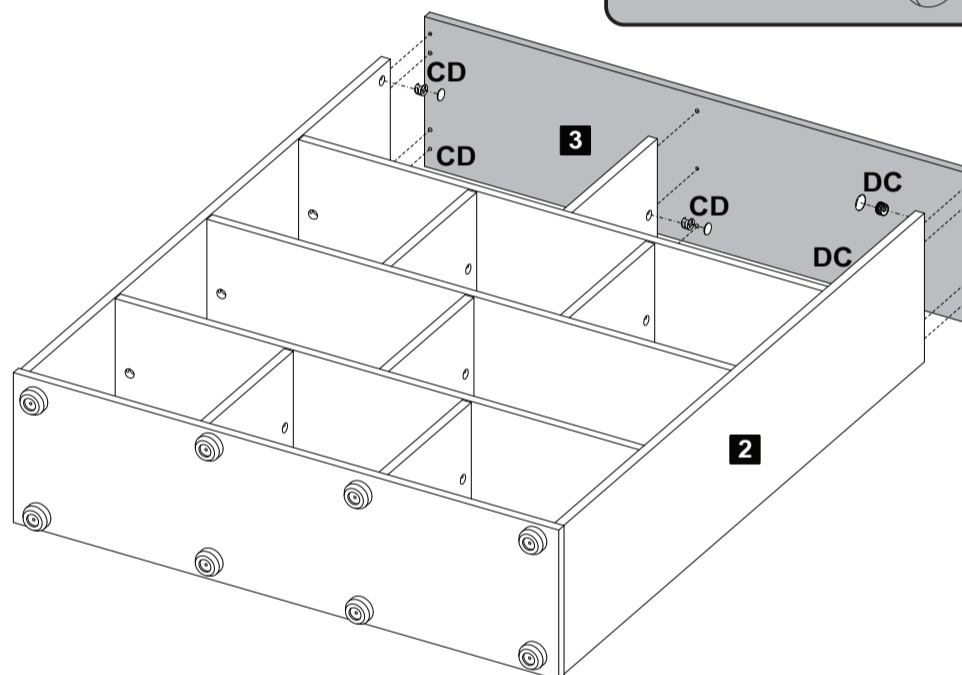
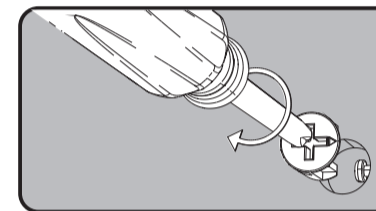
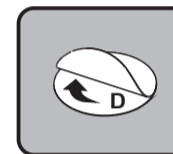
C Tambor 03

11 Passo
Paso
Step



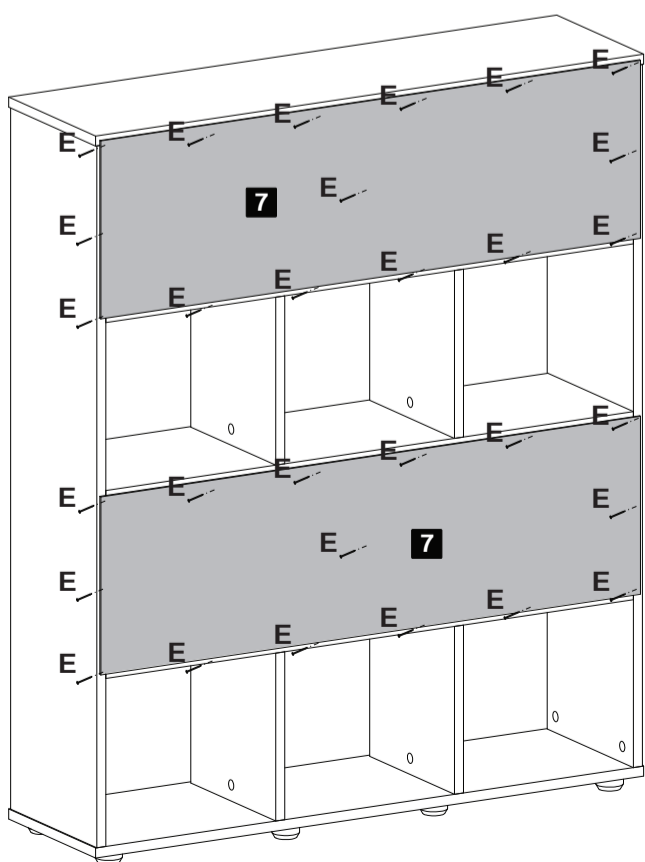
C Tambor 06 D Tapa Furo Adesivo 06

12 Passo
Paso
Step



C Tambor 05 D Tapa Furo Adesivo 05

13 Passo
Paso
Step



E Tambor 30

Rödler

www.rodler.cl