



STILL THE BEST!

DENVER, COLORADO

1-866-623-1963

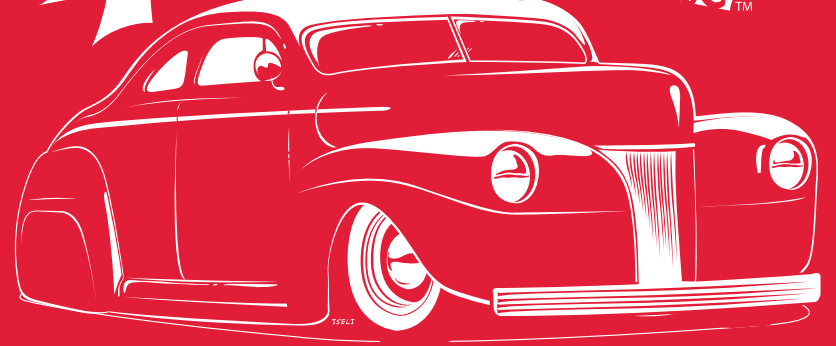
GENNIESHIFTER.COM

GENNIESHIFTER.COM

INST1021

1-877-7-GENNIE

INSTRUCTIONS
GENNIE
SHIFTER™



LO-STIK GM

INST1021

BUTTON-LESS IS BETTER

The *Original* and Still the best.

Shifters Knobs E-Brakes Cables

Pedals Boots Dipsticks Lights

Automatic Transmissions

Parts and Replacement Kits

GENNIESHIFTER.COM

1-877-7-GENNIE

INSTALLATION & ADJUSTMENT

This unit has been pre-assembled, adjusted to initial specifications. Adjustments may be required for you particular application.

Your Lo-Stik assembly is provided with #16 PLAT10011 (Plate - Selector 350-400 Posiloc) and #10 SPRG10005 (Internal Spring16&23) installed. If you are using a 12" Shift Stick with this assembly, you will need to change the spring. The spring #10 is behind the 3/8" jam nuts #12 and the setscrew #11. SEE PICTURE.

To change the spring #10, remove the 3/8" jam nuts #12 and the setscrew #11. Remove the spring #10 from the T-Tube #2 and replace with the spring found in the hardware package provided. SEE PICTURE.

If you are not using Your Lo-Stik assembly on a 350 or 400 transmission, you will need to change the selector plate #16.

To change the selector plate #16, remove the 5/16-18 x 2-1/2 bolt #17, the 5/16-18

Nylock Nut #18, and the spacers #15. Move the triangle brackets #s 6 and 8 apart, remove the selector plate and replace with the correct plate for your application. Be sure to install grated side of Selector plate opposite the Neutral Safety Switch. SEE PICTURE.

PLAT10015 Plate - Selector C6 700 4L80 Posiloc

Labeled: C6 700
Use with: 4L-60, 4L-80, 700R4 and 200R4 transmissions

PLAT10016 Plate - Selector PG Posiloc
Labeled: PG
Use with: Powerglide Transmissions

When all adjustments are complete, please use the instructions included with the correct bracket kit for your transmission.

COMPONENT LIST FOR GM LO-STIK

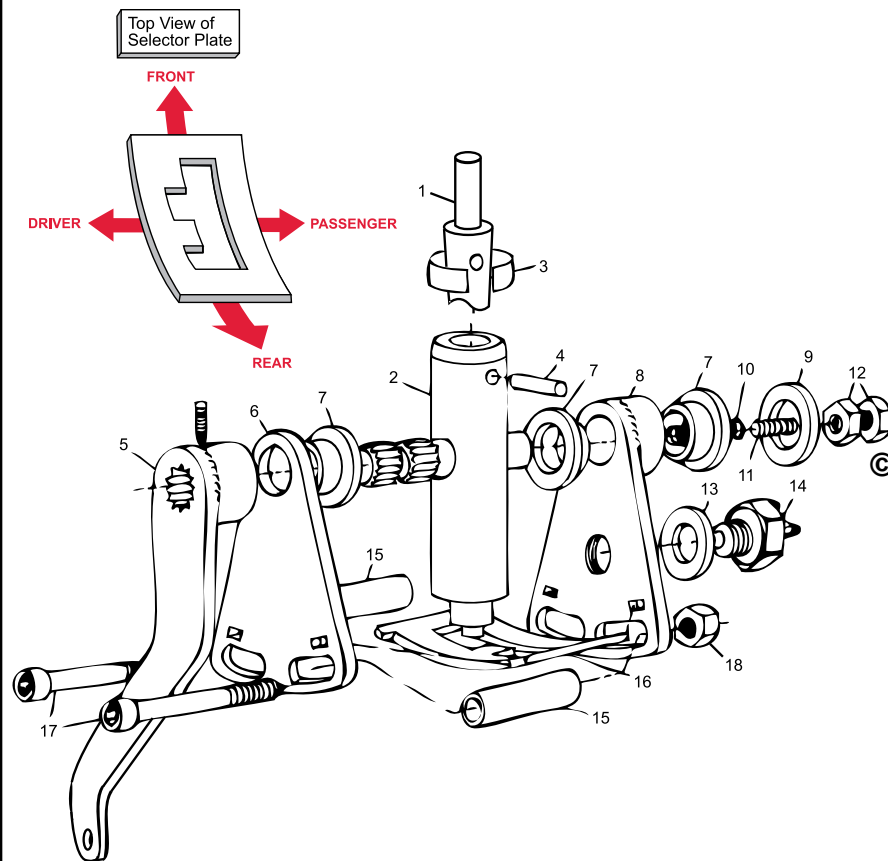
Number on Diagram	Component	Description	Quantity
1	1014	Lo Stik	1
2	TBNG10001	T - Tube	1
3	RETA10001	Roll Pin Retainer	1
4	PINS30001	Pin - Roll 1/4 x 7/8	1
5	ARMS10001	Shift Arms	1
5	SCRW10012	10-24X5/16 Set Screw	1
6	BRKT20032	Triangle Bracket #1	1
7	BUSH10001	Delrin Bushing	3
8	BRKT20033	Triangle Bracket #2	1
9	WASHNFC6	1" OD x 7/16" ID x .075	1
10	SPRG10005	Internal Spring16&23	1
10	SPRG10006	Internal Spring 12	1
11	SCRW10014	3/8-16 x 1" Sckt Set Screw	1
12	NUTS10037	NUT-JAM 3/8-16	2
13	WASH10011	Shim .568 x 1 x .048	1
13	WASH10030	.553x.837odx.016 Shim	1
13	WASHNFC5	WASHER #5 Shim 1" OD x 9/16" I	1
14	SWCH20001	Neutral Saftey Switch	1
15	SPAC10001	SHIFTER TUBE	2
16	PLAT10011	Plate - Selector 350-400 Posiloc	1
16	PLAT10015	Plate - Selector C6 700 4L80 Posiloc	1
16	PLAT10016	Plate - Selector PG Posiloc	1
17	BOLT10011	5/16-18 x 2-1/2 Sckt Cap	2
18	NUTS10033	Nut - Nylock 5/16-18	2
for 1	CAPS20001	Small Plastic Black Button Cap	1
for 17	WASH10029	AN960 C516L Thin Washer SS	4

NEUTRAL SAFETY SWITCH

The GENNIE SHIFTER comes with a double pole normally open safety switch which is connected into the wire (series) from the IGN (ignition) switch to the POS (positive) side of the starter solenoid.

WARNING: Proper operation of the neutral safety switch is extremely important so the vehicle does not start in gear. Due to variations in manufacturing, it may be required to shim the neutral safety switch, to allow for proper operation.

UPPER SHIFTER Diagram Items 1 - 18



READ THIS NOTICE

This product will be partially or entirely replaced if defective in manufacture or packaging. Except for such replacement, the sale or any subsequent handling of this product is without warranty or liability even though defect, damage, or loss is caused by negligence or other fault. PLEASE CONSULT THE DEALER YOU PURCHASED THIS PRODUCT FROM.

Copyright Warning: All drawings and diagrams are property of and represent the intellectual assets of Gennie Shifter. Any use of copyrighted drawings or reproduction and/or reverse engineering of said property or assets will be subject to prosecution in a court of law. Hey, that's why it's the Original and still the best.