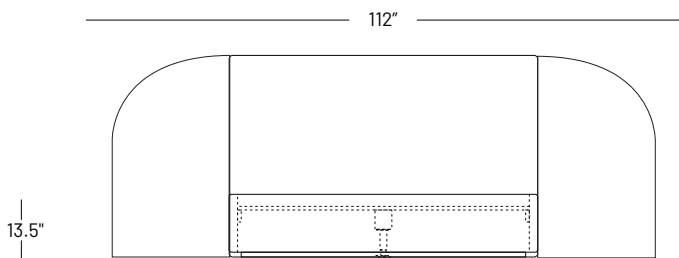
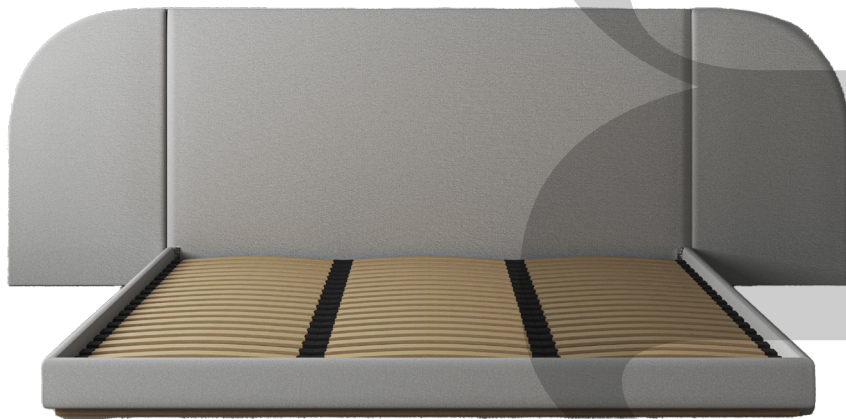


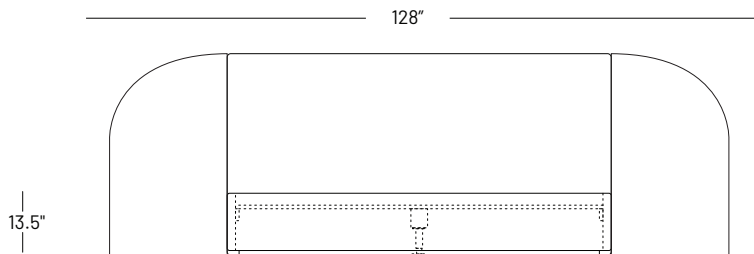
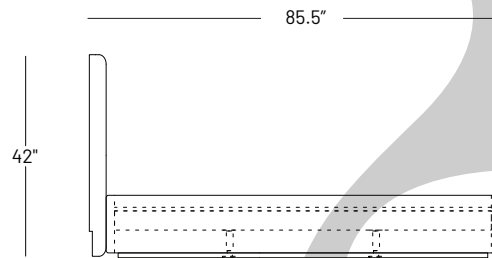
ArcDeco Collection

An ultra-low profile base and Art-Deco-cool headboard make for a standout design: symmetrical curved panels flank a sleek lineal frame and headboard. It's a curvy, geometric statement piece, one that allows plenty of room to hang your favourite artwork in place of pride. Good mornings await.

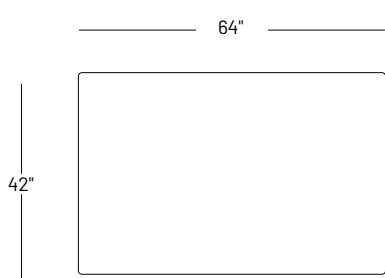
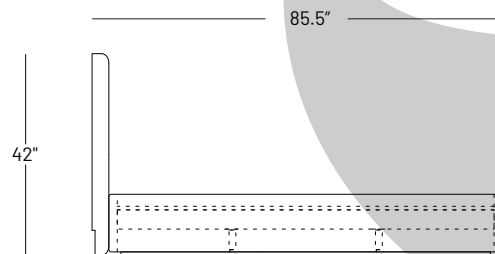
ffabb has been crafting timeless pieces of furniture for over two decades in North Vancouver. The **ffabb** collection offers an accessible, sustainable alternative to fast furniture; using low-emissions materials and abstaining from using any glues or stains harmful to the end user. Each piece is made with longevity in mind - **ffabb** strives so you might adapt them throughout your lifetime!



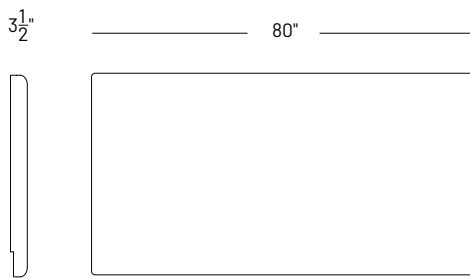
Queen ArcDeco with Inset Base



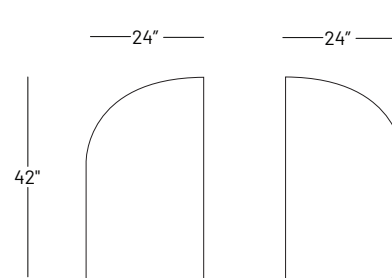
King ArcDeco with Inset Base



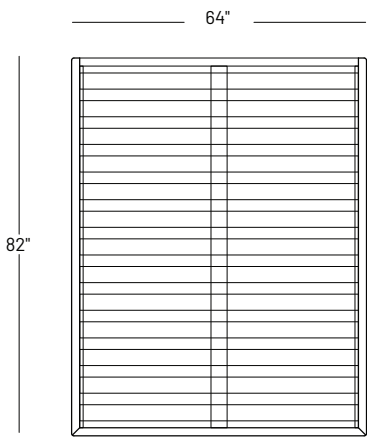
Queen Headboard
300-A



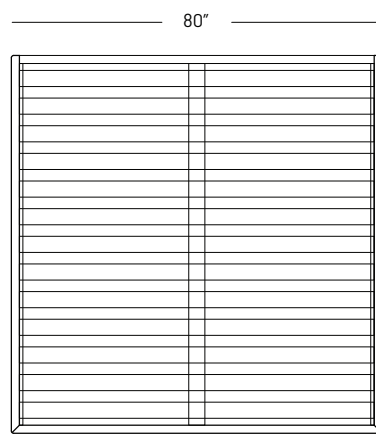
King Headboard
300-B



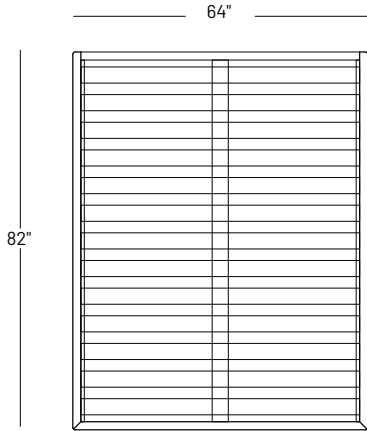
Headboard Arc
300-D



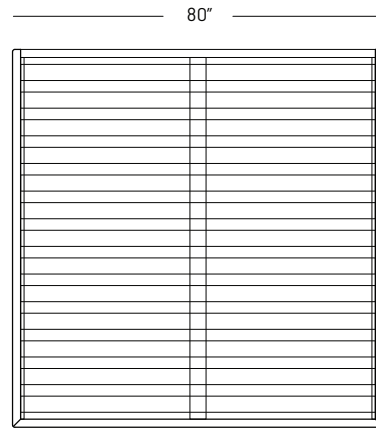
Lala Low Queen Inset



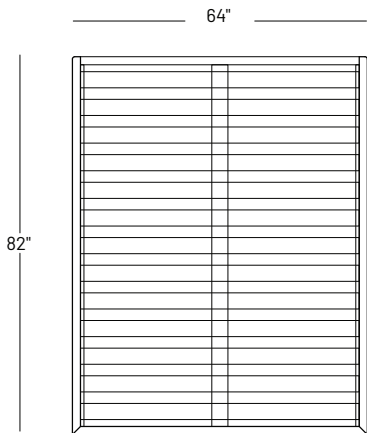
Lala Low King Inset



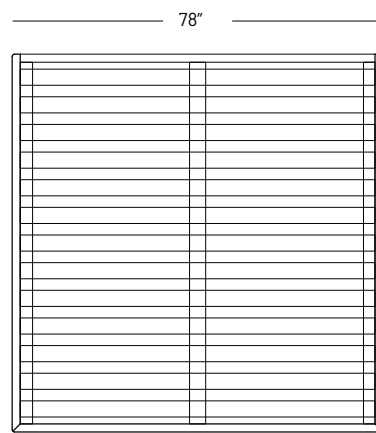
Lala Low Queen Inset Slim



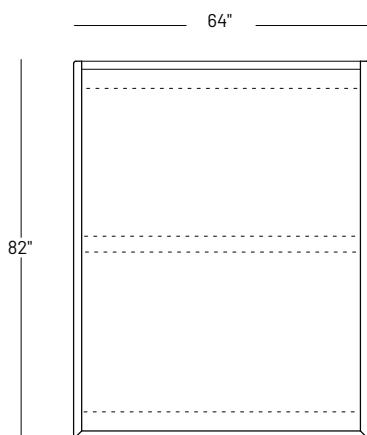
Lala Low King Inset Slim



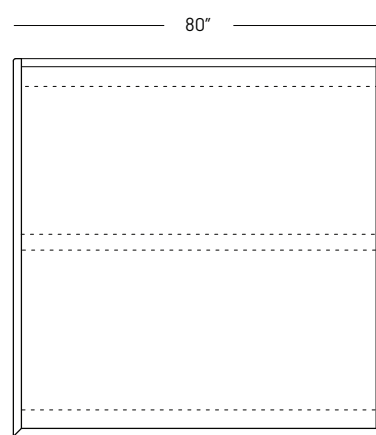
Lala Low Queen Flush



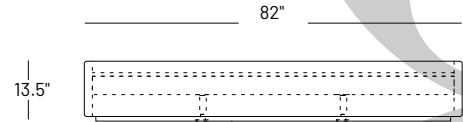
Lala Low King Flush



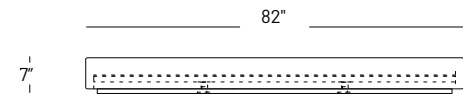
Lala Low Queen Open Frame



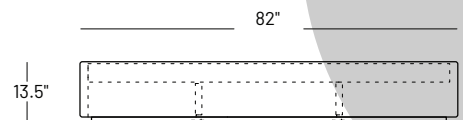
Lala Low King Open Frame



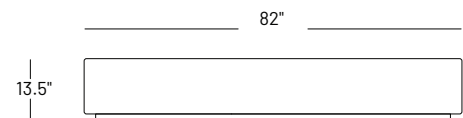
Inset Base: The mattress sits 2" into the bed frame.
The measurement from the floor to the bottom of a mattress is 11"



Inset Slim Base: The mattress sits 3" into the bed frame.
The measurement from the floor to the bottom of a mattress is 4"



Flush Base: The mattress sits flush with the bed frame.
The measurement from the floor to the bottom of a mattress is 13"



Open Frame: To be used with adjustable beds.