

# STAINLESS STEEL PUSH BEAM TROLLEY



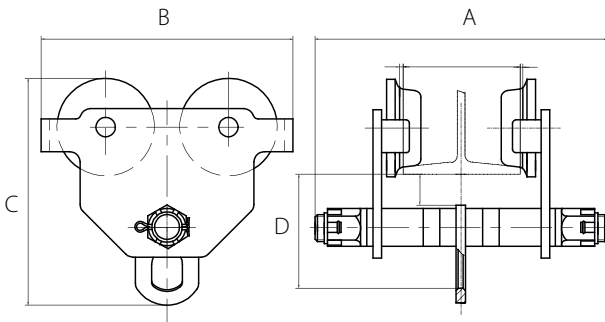
## Features

- Stainless Steel Type 304 Construction for Corrosion Resistance
- Fits to most I, S, and W-Beams
- Individual Test Certificate and Serial Number
- Anti-Drop Plate
- Stainless Steel ID Tag
- Precision Ball Bearing Trolley Wheels

**Standards - CE, AS1418.2, ASME B30.11, ASME B30.16** (For use with manual or powered hoists)



OZSS1PBT



	OZSS05PBT	OZSS1PBT	OZSS2PBT	OZSS3PBT*	OZSS5PBT*	
Safe working load (tons)	.5	1	2	3	5	
Adjustable flange width (in)	2-6	2.5-8	3.5-8	4-6	4.5-6	
Max flange thickness (in)	1.06	1.06	1.06	1.10	1.14	
Product dimensions (in)	A	10	13.22	14.56	15.15	
	B	7.83	9.68	10.86	13.07	14.84
	C	7.6	9	10.55	12.44	14.17
	D	4	5	5.9	6.8	7.8
Minimum radius curve (ft)	2.62	3.28	3.60	4.26	4.59	
Net weight (lbs)	18.7	26.5	43	64	97	

\* Push Beam Trolleys 3 Ton and 5 Ton available. Special order.  
Geared Beam Trolleys .5 Ton – 5 Ton available. Special order.

