

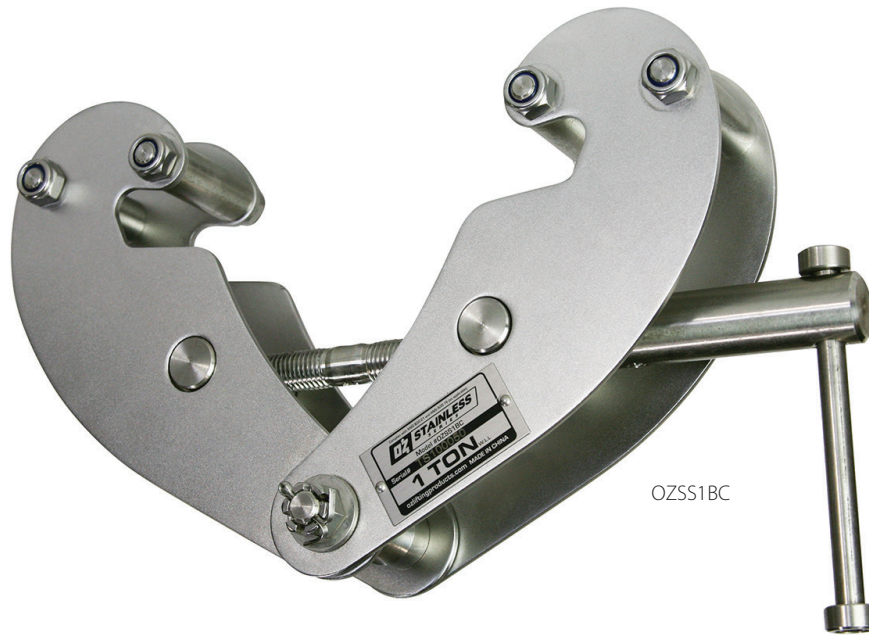
STAINLESS STEEL BEAM CLAMP



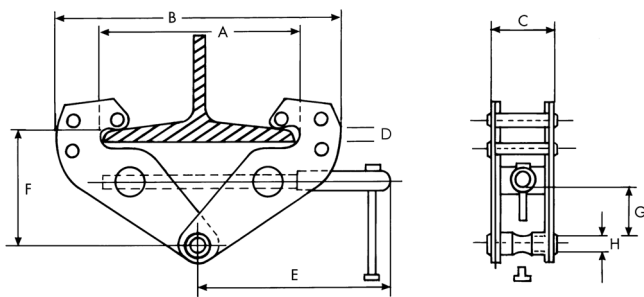
Features

- Stainless Steel Type 304 Construction for Corrosion Resistance
- Super-Quick Adjustment to most I-Beams
- Stainless Steel I.D. Tag
- Individual Test Certificate and Serial Number

Standards - CE, AS4991, ASME B30.16 (For use with manual or powered hoists)



OZSS1BC



	OZSS1BC	OZSS2BC
Safe Working Load tons)	1	2
A	2.95-9.05	2.95-9.05
B	12.2 max.	12.2 max.
C	2.6	3
Dimensions (in)	D .94	.94
E	7.68	7.68
F	5.12-6.57	5.12-6.57
G	1.57	1.57
H	.78	.9
Net Weight (lbs)	9	11

