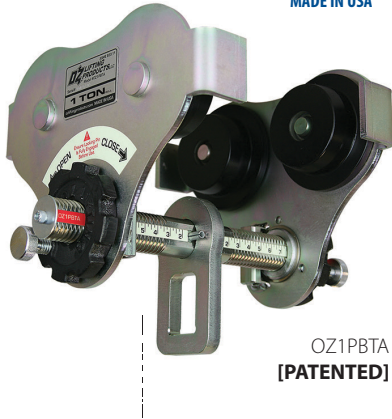




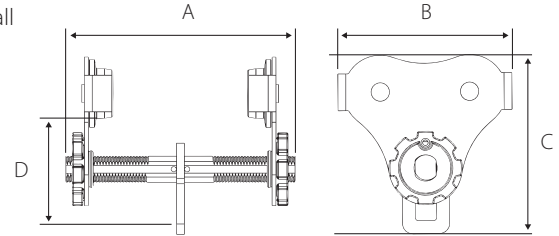
# PUSH BEAM TROLLEY USA

## Features

- Fastest adjusting trolley requiring no tools to install
- Lightweight robust construction
- ROHS compliant zinc plated finish
- Glow in the dark decals
- Universal wheel tread fits most I, S, and W-Beams
- Precision ball bearing trolley wheels
- Side plates protect trolley wheels
- Anti-drop plate
- Individual test certificate and serial number
- Made in USA



OZ1PBTA  
[PATENTED]



## Standards - ASME/ANSI B30.17

	OZ05PBTA	OZ05PBTA-12	OZ05PBTA-16	OZ1PBTA	OZ1PBTA-12	OZ1PBTA-16	OZ2PBTA	OZ3PBTA
Capacity (tons)	.5	.5	.5	1	1	1	2	3
Adjustable flange width (in)	2.52-8.00	2.52-12.00	2.52-16.00	2.75-8.00	2.75-12.00	2.75-16.00	3.75-8.00	3.75-8.00
Max Flange Thickness (in)	1.12	1.12	1.12	1	1	1	1.5	1.75
Product dimensions	A	12.25	15.5	19.5	11	15.5	19.5	14
	B	8.3	8.3	8.3	10.2	10.2	10.2	12
	C	8.5	8.5	8.5	9.8	9.8	9.8	11.9
	D	5	5	5	5.5	5.5	5.5	8.5
Minimum radius curve (ft)	2.75	2.75	2.75	3.35	3.35	3.35	4.5	5
Net weight (lbs)	16	19	20	26	30	31	45	80

### See wheel and bail dimensions on page 18

Dimensions and illustrations are for reference only and subject to change without notice.





## Product Features



- Fast and easy width adjustments
- Built-in width adjustment indicator
- Universal wheel tread fits most I, S, and W-Beams
- Anti-drop plates
- Premium double-sealed ball bearings
- ROHS compliant zinc plated finish
- Ships fully assembled



# Important Information and Precautions

The information in this manual should be used only for the **Push Beam Trolley**. This manual contains general instructions dealing with the normal installation, operation, and maintenance of the product described herein. The information provided should not be expected to prepare the user for all possible circumstances.

This product should not be installed, operated, or maintained by any person who has not read all the contents of these instructions. Failure to read and comply with these instructions, warnings, or limitations noted might result in bodily injury, death, or property damage. Contact the distributor for further explanation if information is not fully understood.

It is the responsibility of the owner/user to install, test, maintain, and operate these products in accordance with OSHA, regulations, other federal, state, and local regulations.

Only trained and qualified personnel shall operate and maintain this equipment.

## Maintain Records

Schedule and maintain records of regular inspection and maintenance of the product. Record your **Push Beam Trolley** serial number and purchase date on the front cover of this manual to allow for easier referencing.

## Precautions

Do not use the **Push Beam Trolley** in conjunction with other equipment unless the system designer, manufacturer, installer, or user has put the necessary safety devices in place. Modifications to upgrade or alter these products should only be authorized by the original manufacturer.

The **Push Beam Trolley** should be used for holding loads only within load ratings.

**These Push Beam Trolleys meet or exceed ASME B30.11, ASME B30.16 standards. (For use with manual or powered hoists)**

# Warnings

Failure to read and comply with the following warnings may result in a hazardous situation that could lead to death, serious injury, or property damage. Be sure to properly install, operate, and maintain the Push Beam Trolley so that it does not come off the beam.

**Do Not** lift more than the designated load range.

**Do Not** lift people or lift loads over people.

**Do Not** operate a damaged or malfunctioning product.

**Do Not** remove, deface, or cover warning labels.

**Do Not** operate until personnel are warned and cleared from the area.

**Do Not** use if load is not suspended vertically.

**Do Not** use beam trolley as welding ground.

**Do Not** weld on the lifted load.

**Do Not** use beam trolleys in corrosive environments.

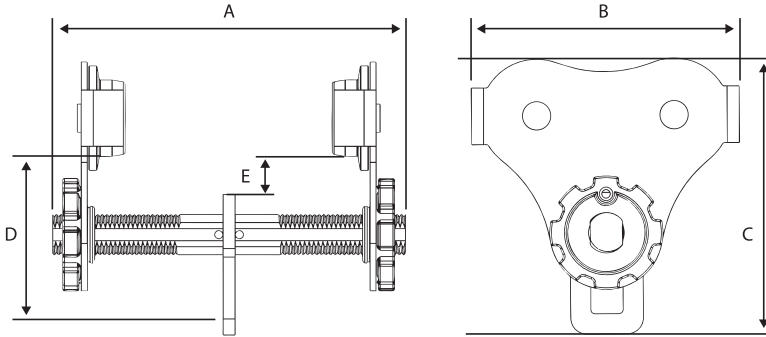
**Do Not** allow the load to swing.

**Do Not** use for any function other than that for which the product is designed.



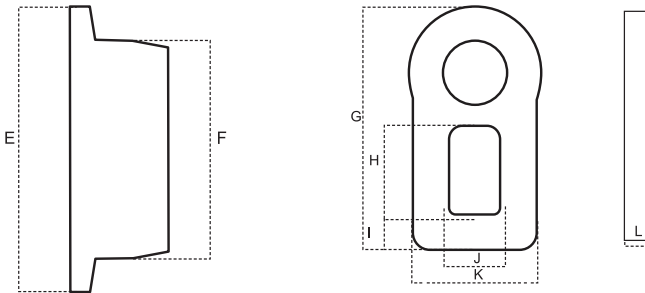
# Technical Information

## (0.5 TON THROUGH 3 TON)



### Specification

	OZ05PBTA	OZ1PBTA	OZ2PBTA	OZ3PBTA
Safe Working Load	1,000 lbs.	2,000 lbs.	4,000 lbs.	6,000 lbs.
Adjustable Flange Width	2.52" - 8.00"	2.75" - 8.00"	3.75" - 8.0"	3.75" - 8.0"
Minimum Radius Curve	2.75 ft.	3.35 ft.	4.5 ft.	5 ft.
A	11"	11"	14"	14"
B	8.3"	10.2"	12"	15.4"
C	8.5"	9.8"	11.9"	14"
D	5"	5.5"	8.5"	9.87"
E	1.12"	1"	1.5"	1.75"
Net Weight	16 lbs.	26 lbs.	45 lbs.	80 lbs.



### Wheel & Bail Dimensions

	OZ05PBTA	OZ1PBTA	OZ2PBTA	OZ3PBTA
E	3.25"	4.00"	4.5"	5.75"
F	2.38"	3.00"	3.25"	4.38"
G	4.38"	5.00"	6.25"	6.88"
H	1.50"	1.88"	2.25"	2.5"
I	0.63"	0.63"	.88"	1.0"
J	1.00"	1.25"	1.38"	1.5"
K	2.25"	2.50"	3.13"	3.5"
L	0.38"	0.50"	.50"	.63"

# Pre-Installation

Check for damage during shipment. Do not install or use a damaged product. Ensure that the threads on the main load bar are not damaged.

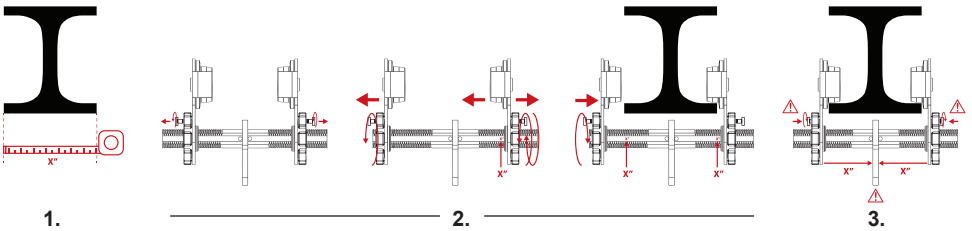
Trolley ships fully assembled.

Maintain records of all accompanying product information.

Contact your OZ Lifting Products LLC® dealer if there are any problems.

Read and comply with all instructions and warnings furnished with or attached to the product as applicable.

# Installation



1. Prior to installation, measure the width of the beam flange.

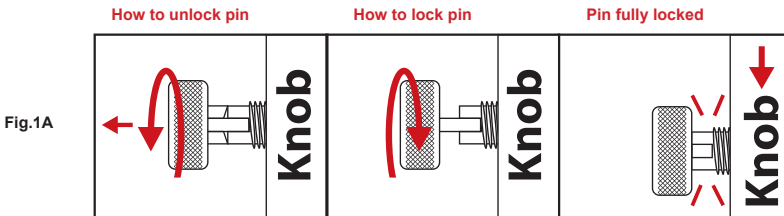
2. Adjust one side of the trolley to the flange measurement (e.g. If beam measures 6 inches, set the trolley to 6 inches on ruler guide). Open opposite side of trolley to fit over the beam.

**NOTE:** To adjust trolley into place on beam, pull out spring loaded lock pin on either side and twist 90 degrees. This position allows the adjustment knob to spin freely until desired width is achieved. To lock trolley into place, twist lock pin an additional 90 degrees until it clicks. Then spin adjustment knob counterclockwise to nearest locking position.

3. Once trolley is installed, verify that the bail is centered on the beam by checking for equal measurements on both sides of the ruler guide.

4. Removal of the trolley is the reverse of installation.

**WARNING:** Ensure that lock pins are fully extended and locked in place prior to operation. Fig.1A



# Operation

## Warnings & Precautions

**Push Beam Trolley** operators should read and fully comprehend this entire manual and all warnings on the product before beginning operation. If this manual is not read and followed completely, injuries may occur.

### All Operators MUST:

- Be trained in proper trolley operation and in dealing with potential malfunctions.
- Abstain from use of alcohol, medications, or drugs while operating.
- Avoid operation while tired or distracted.
- Avoid operation if they have a history of seizures or other medical issues that may interfere with operation.
- Have proper coordination and vision.

**NOTE:** Prior to operation, ensure trolley is in proper working condition and maintenance records are up to date.

## Operation

1. Attach load to suspension bail directly under the trolley.
2. Ensure that the load is centered.
3. Lift slowly and maintain constant observation of the load.

# Maintenance

Operators should visually inspect the trolley on a regular basis. Observe for wear, damage, cuts, cracks, or corrosion. If any problems are observed, the beam trolley should be placed out of service until it can be repaired. Use only OZ Lifting Products LLC® for replacement parts.

Beam trolley should be taken annually to an authorized repair center for professional inspection.

Following repair, test the beam trolley with a load that is 1.25 times the rated load to re-certify the product.

Bearings are sealed and greased for life. There are no user serviceable parts in the trolley.