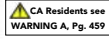




model
VSL-3624



Visibility Storage Lockers

Visibility lockers provide secure and visible storage for equipment, tools, and other valuable items. Locker sides and front door are made of 8 gauge galvanized welded wire mesh with 1½" x 3" openings. Door has a padlock hasp (padlock not included). Frame is made of 14 gauge 1¼" x 3/8" c-channel. Roof, back, and bottom panels are made of 14 gauge sheet material. Ships fully assembled.

MODEL NUMBER	OVERALL SIZE (W x D x H)	NUMBER OF SHELVES	WEIGHT (POUND)
VSL-3030	30" x 30" x 80"	3	268
VSL-3624	36" x 24" x 80"	3	266
VSL-3636	36" x 36" x 80"	3	290



model
JVSL-1818

Storage Lockers

Whether you need this fully welded storage locker for small package pick up, for employee lockers, or evidence storage, you will always have an unrestricted view of the interior. Fully assembled and all welded 3 door heavy duty storage lockers 1 1/4" x 1 1/4" x 1/8" angle framework, 13 gauge shelves, 2" x 1" 10 gauge woven wire mesh sides. Units have 21" between shelves and doors are equipped with separate padlock lugs (Padlock sold separately). 1500 lb. total capacity, 500 lbs per shelf when evenly distributed, unit is painted dark gray. Units are non-returnable.

MODEL NUMBER	OVERALL SIZE (W x D x H)	SHELVES	WEIGHT (POUND)
JVSL-1818	18" x 18" x 75"	3	196
JVSL-2424	24" x 24" x 75"	3	244
JVSL-3030	30" x 30" x 75"	3	291
JVSL-3636	36" x 36" x 75"	3	374



Easy assembly.
Units set up fast!

Stainless Steel Solid Rivet Shelving

High quality Stainless Steel Solid Shelving is made of type 304 stainless steel construction with brushed finish. Each model includes five (5) adjustable shelves with a uniform capacity of 600 pounds per shelf. The 18 gauge thick shelves are adjustable in 1½" teardrop hole increments. Two (2) piece corner post design includes plastic connectors. Ships knocked down, easy assembly.

MODEL NUMBER	SHELF SIZE (W x L)	OVERALL HEIGHT	UNIFORM CAPACITY PER SHELF	WEIGHT (POUND)
LWSS-1836	18" x 36"	72"	600 lb.	86
LWSS-1848	18" x 48"	72"	600 lb.	93
LWSS-2436	24" x 36"	72"	600 lb.	91
LWSS-2448	24" x 48"	72"	600 lb.	133

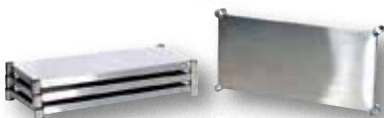


model SSS-1848

Stainless Steel Shelving

Provide easy access to stored items from all sides. High-quality stainless steel (type 304 with a #4 brushed finish) construction is ideal for the commercial or industrial use. Each model includes four (4) set screw adjustable shelves ideal for different height products. Shelves are 18 gauge thick and hold up to 600 pounds each (uniform load). Units ship knocked down and require assembly. Shelving kits include four shelves and hardware.

MODEL NUMBER	SHELF SIZE (W x L)	OVERALL HEIGHT	UNIFORM CAPACITY PER SHELF	WEIGHT (POUND)
SSS-1836	18" x 36"	74"	600 lb.	110
SSS-1848	18" x 48"	74"	600 lb.	135
SSS-2436	24" x 36"	74"	600 lb.	129
SSS-2448	24" x 48"	74"	600 lb.	165
STAINLESS STEEL SHELVING KITS				
SSS-1836-SK	18" x 36"	--	600 lb.	70
SSS-1848-SK	18" x 48"	--	600 lb.	95
SSS-2436-SK	24" x 36"	--	600 lb.	89
SSS-2448-SK	24" x 48"	--	600 lb.	101
STAINLESS STEEL LEG KIT				
SSS-LGK	INCLUDES FOUR LEGS/CORNER POSTS			12



model SSS-1836-SK