

Pallet Busters

Refurbish or remove broken and unsightly pallets quickly and safely. Lightweight and easy to use. Can be utilized to raise a dockboard for fork truck removal. Model SKB-7 features a unique dual prying action with nail puller. Deluxe unit features baked-in powder-coated toughness.

MODEL NUMBER	DESCRIPTION	BAR LENGTH	HANDLE DIAMETER	WEIGHT (POUND)
SKB-7	PALLET BUSTER	41½"	1¼"	9
SKB-DLX	DELUXE PALLET BUSTER	41"	1¼"	16



Pry-Lever Bars

Provide dock workers, riggers, and freight handlers with the leverage needed to get underneath heavy objects for transporting with fork truck, hand truck, pallet truck, or machinery movers. Two (2) 5" x 2" poly-on-steel wheels. ⅜" thick steel nose plate with beveled edge is bolted to the wood handle units and welded on the steel units. Steel units feature baked-in powder-coated toughness.

MODEL NUMBER	HANDLE TYPE	BAR LENGTH	USABLE NOSE PLATE (W x D)	UNIFORM CAPACITY	WEIGHT (POUND)
PLB-5	WOOD	60"	7⅞" x 3⅞"	4,250 lb.	31
PLB-6	WOOD	72"	7⅞" x 3⅞"	4,250 lb.	32
PLB-7	WOOD	84"	7⅞" x 3⅞"	4,250 lb.	35
PLB/S-5	STEEL	59⅞"	6" x 3½"	5,000 lb.	37
PLB/S-6	STEEL	71⅞"	6" x 3½"	5,000 lb.	42
PLB/S-7	STEEL	83⅞"	6" x 3½"	5,000 lb.	47



WOOD HANDLE series PLB



STEEL HANDLE series PLB/S



Pallet Pullers

Pallet Pullers are used to pull pallets to rear of trailers for easy fork truck access. Rugged steel construction. Heads are self-cleaning and unaffected by wood particles, paint, or grease. Pallet pullers and chains are NOT designed for lifting.

PAL-12 and PAL-16 - Single scissor action allows for wider jaw opening.

PAL-14 - Cam closing action provides maximum gripping strength and reduces pinch points. Safety handle enables easier positioning and removal. Grips both metal and wood pallets with biting action.

PAL-21 and PAL-LP - One piece curved heads have integral spurs for gripping pallet stringers.

MODEL NUMBER	DESCRIPTION	UNIFORM PULLING CAPACITY	JAW HEIGHT	JAW OPENING	WEIGHT (POUND)
PAL-12	SINGLE SCISSOR	5,000 lb.	2¾"	7"	14
PAL-16	HEAVY-DUTY SINGLE SCISSOR	6,000 lb.	2"	5"	21
PAL-14	CAM ACTION	5,000 lb.	1½"	3"	17
PAL-21	DOUBLE SCISSOR	5,000 lb.	2¾"	4"	25
PAL-LP	LOW PROFILE DOUBLE SCISSOR	5,000 lb.	2"	3¼"	24
PPC-20	20' OF ¼" CHAIN W/GRAB HOOKS	6,000 lb.	---	---	14
PPC-40	40' OF ¼" CHAIN W/GRAB HOOKS	6,000 lb.	---	---	28

NOT FOR LIFTING



PAL-21



PAL-14

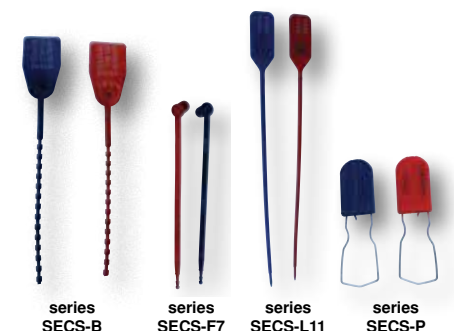


PAL-LP

Security Seals

Seal trailers, gates, hatches, and doors with these general purpose security seals. Reveals the slightest tampering attempts. Two (2) colors and four (4) styles to choose from. Polypropylene construction. Breaking strength of 50 pounds. Sold only in packages of 100.

MODEL NUMBER	STAMPED MARKINGS	LENGTH	SEQUENTIALLY NUMBERED	WEIGHT (POUND)
SECS-B9-BL	SEALED - DO NOT REMOVE	14⅞"	NO	2
SECS-B9-RD	SEALED - DO NOT REMOVE	14⅞"	NO	2
SECS-F7-BL	SEALED	8⅞"	YES	1
SECS-F7-RD	SEALED	8⅞"	YES	1
SECS-L11-BL	SEALED	15"	YES	2
SECS-L11-RD	SEALED	15"	YES	2
SECS-P-BL	SEALED	3"	YES	1
SECS-P-RD	SEALED	3"	YES	1



series SECS-B

series SECS-F7

series SECS-L11

series SECS-P