

Quilted Moving Pads

Cushion and protect furniture, machinery, and electronic equipment. Each pad measures 72" wide by 80" long. Model QPC-7280-UP is water and mildew resistant.

MODEL NUMBER	DESCRIPTION	QUANTITY	WEIGHT (POUND)
QPC-7280-DP	GENERAL DUTY (cotton)	12	57
QPC-7280-UP	ALL WEATHER (polyester)	12	63
QPC-7280-VP	HEAVY-DUTY (polyester/cotton)	12	82
QPC-7280-UP-1PK	ALL WEATHER (polyester)	1	9
QPC-7280-UP-4PK	ALL WEATHER (polyester)	4	30



GENERAL DUTY QPC-7280-DP



ALL WEATHER QPC-7280-UP



HEAVY DUTY QPC-7280-VP



Rubber Wheel Chocks

Constructed of reinforced rubber to provide a sure grip on virtually any surface. Curved surface contours to fit tires. Rubber resists tearing, abrasion, ozone weathering, etc. Functional design is durable in all weather conditions. Series RWC-8 is constructed of a mix of virgin and recycled, no reinforcement cords.

The Airline Chocks are suitable for small and large aircraft. Model AC-13 includes a 36" long polypropylene rope, while model AC-18 has a 14" long polypropylene rope between the chocks.

TYPE	MODEL NUMBER	DESCRIPTION	WHEEL CHOCK (W x H x L)	WEIGHT (POUND)
A	LWC-15	LAMINATED RUBBER (HANDLE)	10 ⁵ / ₈ " x 8" x 7 ⁵ / ₈ "	13
B	LWC-14	LAMINATED RUBBER (HANDLE)	9 ¹ / ₂ " x 5 ¹ / ₂ " x 10 ¹ / ₈ "	17
C	LWC-14M	LAMINATED RUBBER (HANDLE W/RUBBER GRIPS)	9 ¹ / ₂ " x 5 ¹ / ₂ " x 10 ¹ / ₈ "	19
D	RWC-2-PR	MOLDED RUBBER (W/64"L ROPE CONNECTED)	5" x 4" x 8"	10
E	RWC-3	MOLDED RUBBER (HANDLE)	8" x 4" x 8"	6
F	RWC-5	MOLDED RUBBER (MOLDED HANDLE)	4" x 6" x 8"	5
G	RWC-8 *	MOLDED RUBBER (EYEBOLT)	9 ¹ / ₄ " x 6" x 8"	11
H	RWC-8/OH-15-HD	MOLDED RUBBER (2) CHOCKS & (2) 15' CHAINS	9 ¹ / ₄ " x 6" x 8"	32
I	RWC-8-HDL	MOLDED RUBBER (HANDLE)	9 ¹ / ₄ " x 6" x 8"	12
J	ORWC-8-HDL	MOLDED RUBBER (ORANGE)	9 ¹ / ₄ " x 6" x 8"	11
K	RWC-9-U	MOLDED RUBBER ("U" HANDLE)	9 ¹ / ₄ " x 6" x 8"	11
L	RWC-8-SBS	MOLDED RUBBER (SERRATED BOTTOM)	9 ¹ / ₄ " x 6" x 8"	10
M	RWC-10-HDL	MOLDED RUBBER (POSITIONING HANDLE)	9 ¹ / ₂ " x 4 ⁷ / ₈ " x 7 ³ / ₈ "	12
N	RWC-11	MOLDED RUBBER	7" x 7 ³ / ₄ " x 10"	11
O	RWC-25	MOLDED RUBBER (JUMBO)	16" x 8" x 12"	25
P	RMC-4	EXTRUDED RUBBER	6 ¹ / ₂ " x 4 ³ / ₄ " x 4 ¹ / ₄ "	5
R	EX-4	EXTRUDED RUBBER	10" x 3 ³ / ₄ " x 4 ¹ / ₂ "	5
S	EX-11	EXTRUDED RUBBER	8 ¹ / ₂ " x 6" x 8 ¹ / ₂ "	14
T	EX-13	EXTRUDED RUBBER	12" x 5 ³ / ₄ " x 6 ¹ / ₂ "	18
U	AC-13	AIRLINE CHOCK WITH ROPE	10" x 4 ¹ / ₂ " x 5"	12
W	AC-18	AIRLINE CHOCK WITH ROPE	18" x 5 ¹ / ₂ " x 6"	36

*TRUCK MOUNTED WHEEL CHOCK HOLDER AVAILABLE, model TMCH-RWC-8, SEE PAGE 41



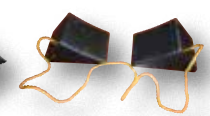
A) LWC-15



B) LWC-14



C) LWC-14M



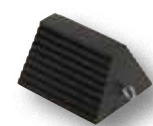
D) RWC-2-PR



E) RWC-3



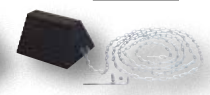
F) RWC-5



G) RWC-8

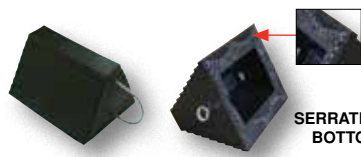


H) RWC-8/OH-15-HD



I) RWC-8-HDL

J) ORWC-8-HDL



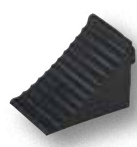
SERRATED BOTTOM

K) RWC-9-U

L) RWC-8-SBS



M) RWC-10-HDL



N) RWC-11



O) RWC-25



P) RMC-4



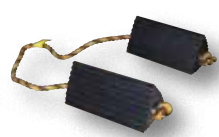
R) EX-4



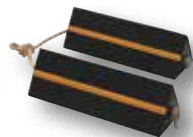
S) EX-11



T) EX-13



U) AC-13



W) AC-18

