

Economy Transporter / Tilter

Move product between work stations. Tilt crates for easier access. 2½" lip holds units in place when tilted. Manual foot pump operation. Tilts 23° in just 11 strokes. Features a removable handle. Rolls smoothly on two (2) swivel with brakes and two (2) rigid poly-on-steel 5" x 2" casters. Baked-in powder-coated toughness.

MODEL NUMBER	PLATFORM SIZE (W x L)	UNIFORM CAPACITY	LEVEL HEIGHT	MAXIMUM TILT	WEIGHT (POUND)
ETT-254	40" x 42¼"	2,500 lb.	10"	23°	254



Manual Tilt Master

Lift, tilt, and transport crates, boxes, and pallets with an open bottom. Designed to give the user an ergonomically correct position to reach loads easily without the need for bending down or excessively reaching over. Forks can be tilted to 90°. Rolls smoothly on 6" x 2" polyurethane swivel casters with brake and foot protectors. Width between forks is 9½". The overall fork width is 22". The individual fork width is 6¼".

MODEL NUMBER	UNIFORM CAPACITY	VERTICAL LIFT HEIGHT	LOWERED FORK HEIGHT	FORK LENGTH	OVERALL WIDTH	WEIGHT (POUND)
TM-22-M	2,200 lb.	11¼"	3½"	31½"	25¼"	413



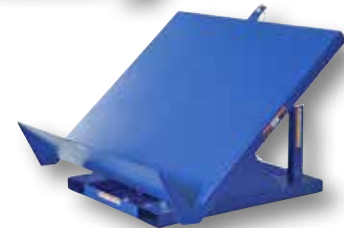
Efficiency Master Tilt Tables 460V 3-PHASE STD, OPTIONS ON PG. 108

The model EM1-200 tilts pallets, crates, boxes, or baskets 45° to facilitate easy container loading or unloading. Tables feature all welded steel construction for years of durability. Unique design minimizes pinch points to meet OSHA requirements. Units are equipped with an industrial quality, 56 frame 2 HP motor. This motor delivers best torque with minimal amperage draw for maximum life. Standard voltage is 460V 3 phase, other voltages available. A 24V push button hand control is standard. Base includes 7½"W x 2½"H usable fork pockets on 30" centers for portability with forklift. [Survey sheet available on page 152.](#)

The model EM1-500 incorporates many of the same quality features found in the Series EM1-200, but features a full 90° of tilt. Unit is ideal for upending products in shipping and receiving operations. Standard with double acting cylinder for controlled tilt and return. Unit must be lagged to floor.

MODEL NUMBER	USABLE SIZE (W x L)	UNIFORM CAPACITY	MAXIMUM TILT	HORIZONTAL HEIGHT	WEIGHT (POUND)
EM1-200-4250-2	42" x 50"	2,000 lb.	45°	24"	740
EM1-200-4848-2	48" x 48"	2,000 lb.	45°	24"	697
EM1-200-6050-2	60" x 50"	2,000 lb.	45°	24"	834
EM1-200-4250-4	42" x 50"	4,000 lb.	45°	24"	780
EM1-200-4848-4	48" x 48"	4,000 lb.	45°	24"	733
EM1-200-6050-4	60" x 50"	4,000 lb.	45°	24"	894
EM1-200-4250-6	42" x 50"	6,000 lb.	45°	24"	822
EM1-200-4848-6	48" x 48"	6,000 lb.	45°	24"	832
EM1-200-6050-6	60" x 50"	6,000 lb.	45°	24"	912
EM1-500-4250-2	42" x 50"	2,000 lb.	90°	24"	849
EM1-500-4848-2	48" x 48"	2,000 lb.	90°	24"	887
EM1-500-6050-2	60" x 50"	2,000 lb.	90°	24"	1035
EM1-500-4250-4	42" x 50"	4,000 lb.	90°	24"	870
EM1-500-4848-4	48" x 48"	4,000 lb.	90°	24"	905
EM1-500-6050-4	60" x 50"	4,000 lb.	90°	24"	1047
EM1-500-4250-6	42" x 50"	6,000 lb.	90°	24"	865
EM1-500-4848-6	48" x 48"	6,000 lb.	90°	24"	923
EM1-500-6050-6	60" x 50"	6,000 lb.	90°	24"	1106

OPTIONAL FOOT CONTROL, model FC-2



45° EFFICIENCY MASTER features a 12" high lip series EM1-200

LINE-X
Custom Finish Available



90° EFFICIENCY MASTER features a 24" high lip series EM1-500

EFFICIENCY MASTER TILT TABLE OPTIONS	
MODEL NUMBER	DESCRIPTION
EM1-300-APPB	*HAND HELD CONTROL AIR POWERED HYDRAULIC - ROTARY-PB-2, FOR 45° TILTERS
EM1-300-APFC	*FOOT CONTROL AIR POWERED HYDRAULIC - ROTARY-FC-2, FOR 45° TILTERS
EM1-300-APFT	*FOOT TREADLE AIR POWERED 2000# & 4000# ONLY - RECIPR, FOR 45° TILTERS
EM1-600-APPB	*HAND HELD CONTROL AIR POWERED HYDRAULIC - ROTARY-PB-2, FOR 90° TILTERS
EM1-600-APFC	*FOOT CONTROL AIR POWERED HYDRAULIC - ROTARY-FC-2, FOR 90° TILTERS

*FILTER REGULATOR - LUBRICATOR REQUIRED TO OPERATE UNIT