



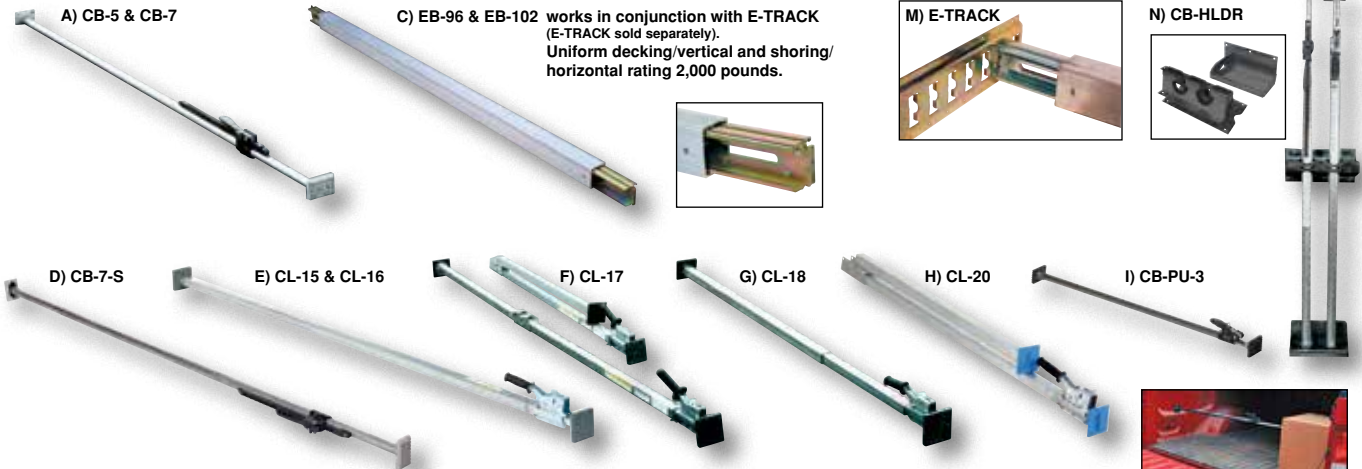
Easy to use ratchet mechanism allows one person to adjust and ratchet into place.

## Cargo Bars

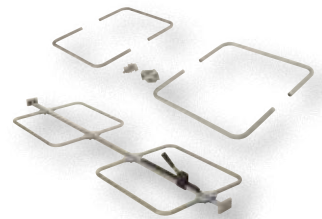
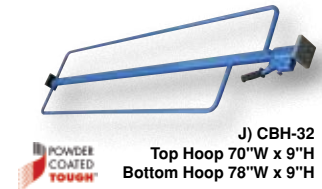
- Keep trailer contents in place - eliminate damaged goods
- Simple mechanical lock - will not vibrate loose



During transport, keep trailer contents securely in place with these easy to use Cargo Bars. Constructed of 1½" square tubing, unless specified. 14 gauge wall construction is lightweight, yet extremely strong. Square articulating steel end plates feature rubber pads for positive gripping action. End plates measure 4" x 4" on models CL-15, CL-16, CL-17 & CL-20. End plates measure 4" x 2¾" on model CB-5, CB-7 & CB-7-S and 3¾" x 3¾" on model CL-18 and CBH-32. End plates measure 2¾" x 3" on model CB-PU-3. Bars fit between trailer walls.



TYPE	MODEL NUMBER	DESCRIPTION	SERVICE RANGE	WEIGHT (POUND)
A	<b>CB-5</b>	ONE PIECE ALUMINUM (ROUND TUBE)	88" to 103"	8
A	<b>CB-7</b>	ONE PIECE ALUMINUM Heavy-Duty (ROUND TUBE)	89" to 104"	9
C	<b>EB-96</b>	ONE PIECE ALUMINUM (E-TRACK)	85" to 96"	19
C	<b>EB-102</b>	ONE PIECE ALUMINUM (E-TRACK)	92" to 102"	21
D	<b>CB-7-S</b>	ONE PIECE STEEL (ROUND TUBE)	89" to 104"	12
E	<b>CL-15</b>	ONE PIECE STEEL	87" to 119"	15
E	<b>CL-16</b>	ONE PIECE STEEL GALVANIZED	87" to 119"	15
F	<b>CL-17</b>	TWO PIECE STEEL GALVANIZED (FOLDING)	88" to 116"	17
G	<b>CL-18</b>	TWO PIECE STEEL GALVANIZED (TELESCOPIC)	90¾" to 139¾"	24
H	<b>CL-20</b>	TWO PIECE STEEL E & A TRACK (FOLDING)	87" to 116"	18
I	<b>CB-PU-3</b>	ONE PIECE STEEL TRUCKS/VANS (ROUND TUBE)	40" to 70"	5
J	<b>CBH-32</b>	ONE PIECE STEEL WITH FULL HOOPS	87" to 116"	28
K	<b>CH-7</b>	GALVANIZED HOOPS (FOR CB SERIES ONLY)	30½"W x 23⅛"H	16
L	<b>CH-3</b>	GALVANIZED HOOPS (FOR CL SERIES ONLY)	31"W x 24½"H	15
M	<b>E-TRACK</b>	STEEL SECTION OF E-TRACK FOR TRAILERS	10 FOOT	16
N	<b>CB-HLDR</b>	CARGO BAR HOLDER	--	7



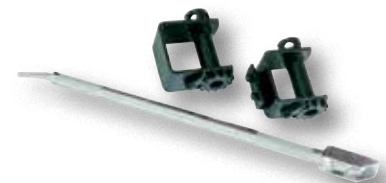
K & L) Cargo Bar Hoops  
 model CH-7 for CB series Cargo Bars  
 model CH-3 for CL series Cargo Bars  
 (cargo bars sold separately, hoops sold in pairs)

## Truck Mounted Strap Winches

Tighten down loads to eliminate shifting. Choose from either weld or bolt on design. Strap and winch bar sold separately. Low profile design available. Accommodates 4" straps up to 30' long.

MODEL NUMBER	DESCRIPTION	OVERALL SIZE (W x L x H)	WEIGHT (POUND)
<b>SW-4-PSW*</b>	WELD ON WINCH	3½" x 7¾" x 6¼"	10
<b>SW-4-PSB*</b>	BOLT ON WINCH	3½" x 7¾" x 6¼"	11
<b>SW-BAR</b>	MULTI-TASK WINCH BAR	1½" DIA. x 38"L	7
<b>SW-BAR-PT</b>	PAINTED WINCH BAR	1½" DIA. x 38"L	8
<b>STRAP-30</b>	30 FOOT STRAP	4" W x 30'L	7

\*ACCOMMODATES 4" WIDE BY 30 FOOT LONG STRAP



30 FOOT STRAP  
 model STRAP-30