



POWDER COATED TOUGH
CARBON STEEL

model FLAD-2

STAINLESS STEEL

Folding Ladders with Wheels

Locking foldable design saves on storage space when ladder is not in use. Ladder folds after unlocking one spring-loaded detent pin. Once unit is folded, tilt back on wheels for easy portability. Available in either carbon steel or stainless steel. The steps are perforated to provide a non-slip surface. The ladders have 7" deep steps and a climb angle of 58°. Stainless steel models are a 202 grade. Complies with ANSI 14.7 and OSHA 1910.29 specifications.

NUMBER OF STEPS	TOP STEP HEIGHT	UNIFORM CAPACITY	WEIGHT (POUND)	MODEL NUMBER CARBON STEEL	MODEL NUMBER STAINLESS STEEL
2	20 ⁵ / ₈ "	350 lb.	31	FLAD-2	FLAD-2-SS
3	30 ¹ / ₄ "	350 lb.	39	FLAD-3	FLAD-3-SS
4	39 ⁷ / ₈ "	350 lb.	47	FLAD-4	FLAD-4-SS



model C-130-2

model C-130-3

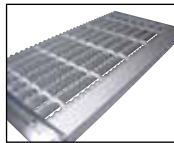
Aluminum Ladder/Carts

These well built Aluminum Ladder/Carts are great for home, office, or store. Rugged aluminum construction is strong and lightweight. Converts in seconds from ladder to cart. Ladder uniform capacity is 250 lb., while the hand truck uniform capacity is 130 lb. Nose plate measures 15" wide. Units roll smoothly on 4" wheels.

MODEL NUMBER	NO. OF STEPS	OVERALL LADDER (W x D x H)	OVERALL CART (W x D x H)	OVERALL FOLDED SIZE (W x D x H)	WEIGHT (POUND)
C-130-2	2	18½" x 20" x 37"	18½" x 14" x 39"	18½" x 3½" x 39"	17
C-130-3	3	18½" x 29" x 47"	18½" x 18" x 50"	18½" x 3½" x 50"	22



model SSA-3



Aluminum Step Stands

Ideal for industrial or commercial applications. Strong design yields a uniform capacity of 500 pounds, but is lighter than comparable steel models. Open step design includes extra heavy duty serrated surface for traction. With rubber tipped legs, this step ladder is ideal for use on many types of floors. Complies with OSHA 1910.24 specifications.



model SSA-2-Y

POWDER COATED TOUGH

RAW ALUMINUM FINISH

MODEL NUMBER	NO. OF STEPS	OVERALL SIZE (W x D x H)	ASSEMBLY	WEIGHT (POUND)
SSA-1	1	22 ¹³ / ₁₆ " x 14 ⁷ / ₈ " x 10 ⁷ / ₁₆ "	WELDED	13
SSA-1W	1	32 ¹³ / ₁₆ " x 14 ⁷ / ₈ " x 10 ⁷ / ₁₆ "	WELDED	13
SSA-2	2	22 ¹³ / ₁₆ " x 24 ⁹ / ₁₆ " x 20"	WELDED	14
SSA-2W	2	32 ¹³ / ₁₆ " x 24 ⁹ / ₁₆ " x 20"	WELDED	19
SSA-3	3	22 ¹³ / ₁₆ " x 34 ⁹ / ₁₆ " x 20"	WELDED	27
SSA-3W	3	32 ¹³ / ₁₆ " x 34 ⁹ / ₁₆ " x 30"	WELDED	29
SSA-2-KD	2	22 ¹³ / ₁₆ " x 24 ⁹ / ₁₆ " x 20"	BOLT TOGETHER	14
SSA-2W-KD	2	32 ¹³ / ₁₆ " x 24 ⁹ / ₁₆ " x 20"	BOLT TOGETHER	19
SSA-3-KD	3	22 ¹³ / ₁₆ " x 34 ⁹ / ₁₆ " x 30"	BOLT TOGETHER	29
SSA-3W-KD	3	32 ¹³ / ₁₆ " x 34 ⁹ / ₁₆ " x 30"	BOLT TOGETHER	29

YELLOW POWDER COAT FINISH

SSA-1-Y	1	22 ¹³ / ₁₆ " x 14 ⁷ / ₈ " x 10 ⁷ / ₁₆ "	WELDED	13
SSA-1W-Y	1	32 ¹³ / ₁₆ " x 14 ⁷ / ₈ " x 10 ⁷ / ₁₆ "	WELDED	13
SSA-2-Y	2	22 ¹³ / ₁₆ " x 24 ⁹ / ₁₆ " x 20"	WELDED	14
SSA-2W-Y	2	32 ¹³ / ₁₆ " x 24 ⁹ / ₁₆ " x 20"	WELDED	14
SSA-3-Y	3	22 ¹³ / ₁₆ " x 34 ⁹ / ₁₆ " x 20"	WELDED	27
SSA-3W-Y	3	32 ¹³ / ₁₆ " x 34 ⁹ / ₁₆ " x 30"	WELDED	30
SSA-2-KD-Y	2	22 ¹³ / ₁₆ " x 24 ⁹ / ₁₆ " x 20"	BOLT TOGETHER	14
SSA-2W-KD-Y	2	32 ¹³ / ₁₆ " x 24 ⁹ / ₁₆ " x 20"	BOLT TOGETHER	14
SSA-3-KD-Y	3	22 ¹³ / ₁₆ " x 34 ⁹ / ₁₆ " x 30"	BOLT TOGETHER	29
SSA-3W-KD-Y	3	32 ¹³ / ₁₆ " x 34 ⁹ / ₁₆ " x 30"	BOLT TOGETHER	29