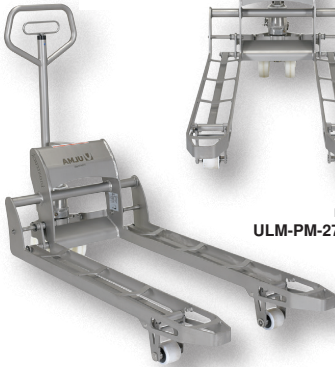




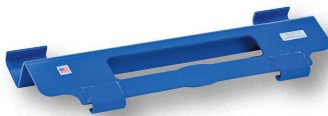
model
PM5-2748-S-Z



model
PM5-2048-SS



model
ULM-PM-2745-30



NON-ADJUSTABLE
model PJ-1005



ADJUSTABLE
model PJ-2001



Specialized Pallet Trucks (with nylon wheels) Ships with the Handle Detached Standard

Stainless Steel and Stainless Steel Frame & Forks - Ideal for sanitary, pharmaceutical, medical, food, corrosive, and wet environments. Choose type 304 stainless steel frame and forks only (chrome handle) or 100% type 304 stainless steel pallet truck for long life in the harshest environments. 5,500 pounds uniform capacity. Individual fork width is 6½".

Galvanized and Zinc Coated - Ideal for corrosive environments. Full-featured pallet trucks were designed for chemical, pharmaceutical, and wash-down applications. 5,500 pounds uniform capacity.

MODEL NUMBER	DESCRIPTION	OVERALL FORK SIZE (W x L)	SERVICE RANGE	WEIGHT (POUND)
PM5-2048-SS	STAINLESS STEEL	21½" x 45"	27/8" to 7¾"	232
PM5-2748-SS	STAINLESS STEEL	27" x 48"	27/8" to 7¾"	225
PM5-2748-SFF	SS FRAME & FORKS	27" x 48"	27/8" to 7¾"	194
PM5-2748-S-Z	ZINC COATED	27" x 48"	27/8" to 7¾"	211
PM5-2048-S-G	GALVANIZED	20" x 48"	27/8" to 7¾"	182
PM5-2748-S-G	GALVANIZED	27" x 48"	27/8" to 7¾"	197
(6) SIX PACKS - CRATED				
PM5-2748-S-G-6PKG	GALVANIZED	27" x 48"	27/8" to 7¾"	1141

Stainless Steel Pallet Trucks

Stainless Steel Hydraulic Hand Pump Pallet Jacks are a superb addition to the food handling and other hygienic environments. The stainless steel construction is not only strong, but also simple to clean with its open fork design for thoroughly detailing the unit before/after transferring products. 304L Stainless Steel construction, including hydraulic cylinders as well as the piston. The height of the ergonomically friendly handle diminishes slouching and can be rotated for simple maneuvering of products down narrow corridors and pathways. All bearings are sealed for waterproof protection during both use and cleaning.

MODEL NUMBER	UNIFORM CAPACITY	OVERALL FORK SIZE (W x L)	SERVICE RANGE	WEIGHT (POUND)
ULM-PM-2745-30	3,300 lb.	26¾" x 45¼"	3¾" to 8"	170
ULM-PM-2745-40	4,500 lb.	26¾" x 45¼"	3¾" to 8"	170

Pallet Jockeys for "Walkie" Trucks

The Pallet Jockeys are simple devices that allows drivers and warehouse personnel to efficiently unload sideways pallets with their "Walkie" powered pallet trucks without wasting valuable time and resources. Maximum capacity is 4,000 pounds.

The Non-Adjustable unit is ideal for warehouse distribution centers that have one particular electric pallet truck model. To use, simply place the Pallet Jockey hooks into the fork wheel openings. Fits popular sizes of walkie trucks (verify your fork width and end of fork dimensions) and our electric pallet truck, model EPT-2547-30.

The Adjustable unit is designed to fit various types of electric pallet jacks. To use, simply loosen wing bolts and slide adjustable brackets to proper slot, then tighten wing bolts.

MODEL NUMBER	DESCRIPTION	POWERED PALLET TRUCK STYLE IT WORKS WITH	WEIGHT (POUND)
PJ-1005	NON-ADJUSTABLE	VARIOUS ELECTRIC WALKIE TRUCKS	20
PJ-2001	ADJUSTABLE	VARIOUS ELECTRIC WALKIE TRUCKS	28