

LIFTING ACCESSORIES

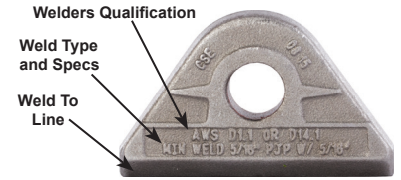
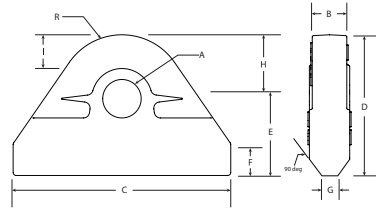


WELD-ON PADEYES

Engineered and certified to meet all ASME BTH-1 categories and classes. Eliminate the need and time to engineer, fabricate, machine and certify lifting padeyes. By purchasing these one-of-a-kind padeyes, you can have them on the shelf ready to weld and speed up delivery, testing and approval of your projects.

FEATURES:

- » Hole is reamed to fit shackle pin/bolt ± 0.01"
- » Weldable A36 Carbon Steel
- » Weld Spec and Weld Line on Padeye
- » Date Coded
- » Engineered and Certified



WLL (Tons)	Shackle Size (in)	A (in)	B (in)	C (in)	D (in)	E (in)	F (in)	G (in)	H (in)	I (in)	R (in)	Weight (lbs)	Minimum Weld	Carbon Steel Model No.
1/2	1/4	21/64	11/32	2-7/64	1-3/8	3/4	5/16	N/A	5/8	7/16	5/8	0.20	0.188"	PE0050
1	3/8	15/32	9/16	2-7/16	1-5/8	7/8	3/8	N/A	3/4	1/2	3/4	0.40	1/4"	PE0100
1-1/2	7/16	17/32	5/8	2-3/4	1-9/16	7/8	1/4	7/32	11/16	13/32	11/16	0.40	3/16 PJP with 3/16" Fillet	PE0150
2	1/2	43/64	11/16	3-1/4	2-1/8	1-1/8	7/16	5/32	1	21/32	1	0.80	1/4 PJP with 1/4" Fillet	PE0200
4-3/4	3/4	15/16	1-1/8	4-7/16	2-5/8	1-7/16	1/2	15/32	1-1/4	25/32	1-1/4	2.20	5/16 PJP with 5/16" Fillet	PE0475
6-1/2	7/8	1-1/16	1-5/16	5-3/16	2-15/16	1-5/8	1/2	3/8	1-5/16	25/32	1-5/16	3.05	7/16 PJP with 7/16" Fillet	PE0650

WLL = Working Load Limit

Request Padeyes Tech Sheet

COMPACT LID REMOVER

Magnetic lid remover offers a lightweight and compact, one-piece design that is easy to use, store and transport. Harnessing the forces of magnetism and leverage, users can remove and replace manhole lids up to 450 lbs. .

To operate, remove the protective guard from the magnet, and carefully place the unit on the edge of the manhole cover. Make sure the leverage bar is on a solid surface (road). Push down on the handle to raise the lid from the manhole and pull backwards to clear the lid from the hole. The magnet is freed from the lid by moving the handle over the magnets in the opposite direction.

FEATURES:

- » Powerful Rare Earth Magnets
- » Durable Stainless/Aluminum Construction with Rubber Grip T-Handle
- » Magnet storage guard when not in use

Description	Wt. (lbs)	Model No.
One-Piece, T-Handle, Two Magnets, 36" Tall, 12" Wide	25	MCL450



ON/OFF MAGNETIC UTILITY LIFTER

Stop bending over to lift and remove cast iron utility and valve box covers! Also lifts pipes and other steel items. Reduce finger and toe injuries with this lightweight deep reach switchable permanent magnetic lifter. The magnetic field penetrates textured surfaces of lids and allows the operator to ergonomically lift the casting out of the way.

This Magnetic Utility Lifter has a locking On/Off handle for safety and makes removing covers quick and easy.



Lift - lbs (kg)	Height (in)	Width (in)	Length (in)	Weight (lbs)	Model No.
50.0 (22.68)	28-1/2	5-1/2	3-1/2	7.65	MCLVB01
75.0 (34.02)	28-1/2	7	5	14.25	MCLVB02