

PRINTED IN CHINA / IMPRESO EN CHINA  
16GSC(TINSZA162EHVT)

## ENGLISH

### BEFORE USE

- Do not press too hard against the LCD panel because it contains glass.
- Never dispose of the battery in a fire.
- Keep battery out of reach of children.
- Please press **ON/OFF** if you see **no indication**.
- This product, including accessories, may change due to upgrading without prior notice.
- Since this product is not waterproof, do not use it or store it where fluids, for example water, can splash onto it. Raindrops, water spray, juice, coffee, steam, perspiration, etc. will also cause malfunction.

SHARP will not be liable nor responsible for any incidental or consequential economic or property damage caused by misuse and/or malfunctions of this product and its peripherals, unless such liability is acknowledged by law.

## ESPAÑOL

### ANTES DE USAR

- No empuje demasiado fuerte contra el panel de LCD porque contiene vidrio.
- No tire nunca las pilas al fuego.
- Guarde las pilas fuera del alcance de los niños.
- Si no ve **ninguna indicación** pulse **ON/OFF**.
- Este producto, incluyendo los accesorios, puede sufrir cambios debidos a mejoras sin previo aviso.
- Debido a que este producto no es a prueba de agua, no deberá ser utilizado o guardado en lugares donde pudiera ser salpicado por líquidos, por ejemplo agua. Gotas de lluvia, salpicaduras de agua, jugos o zumos, café, vapor, transpiración, etc. también perjudican el funcionamiento del producto.

SHARP no será responsable de ningún daño imprevisto o resultante, en lo económico o en propiedades, debido al mal uso de este producto y sus periféricos, a menos que tal responsabilidad sea reconocida por la ley.

## SPECIFICATIONS

Type: Electronic calculator  
Operating capacity: EL-330W: 10 digits  
EL-334W: 12 digits  
Power supply: Built-in solar cell and alkaline manganese (1.5V  $\times$  (DC) LR44 $\times$ 1)  
Operating time: (varies according to use and other factors) Approx. 24 months (with 1 hour of daily use, using the alkaline battery only)  
Automatic Power-off: Approx. 7 min.  
Operating temperature: 0°C - 40°C (32°F-104°F)  
Dimensions: EL-330W: 98 mm(W)  $\times$  153 mm(D)  $\times$  27.5 mm(H)  
3-27/32" (W)  $\times$  6-1/32" (D)  $\times$  1-3/32" (H)  
EL-334W: 112 mm(W)  $\times$  170 mm(D)  $\times$  14.3 mm(H)  
4-13/32" (W)  $\times$  6-11/16" (D)  $\times$  9/16" (H)  
Weight: EL-330W: Approx. 120 g (0.27 lb)  
EL-334W: Approx. 161 g (0.36 lb) (battery included)  
Accessories: Alkaline manganese battery (installed), Operation manual

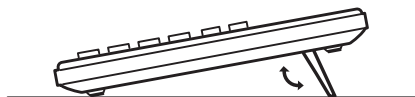
## ESPECIFICACIONES

Tipo: Calculadora electrónica  
Capacidad de funcionamiento: EL-330W: 10 dígitos  
EL-334W: 12 dígitos  
Potencia: Pila solar incorporada y pila de manganeso alcalino (1.5V  $\times$  (CC) LR44 $\times$ 1)  
Tiempo de funcionamiento: (varía de acuerdo al uso y otros factores) Aprox. 24 meses (con 1 hora de uso diario, utilizando la pila alcalina solamente)  
Desconexión automática de corriente: Aprox. 7 min.  
Temperatura de funcionamiento: 0°C - 40°C  
Dimensiones: EL-330W: 98 mm (ancho)  $\times$  153 mm (espesor)  $\times$  27,5 mm (alto)  
EL-334W: 112 mm (ancho)  $\times$  170 mm (espesor)  $\times$  14,3 mm (alto)  
Peso: EL-330W: Aprox. 120 g  
EL-334W: Aprox. 161 g (pila incluida)  
Accesorios: Pila de manganeso alcalino (instalada), manual de manejo

## KICK STAND

## APOYO

EL-334W:

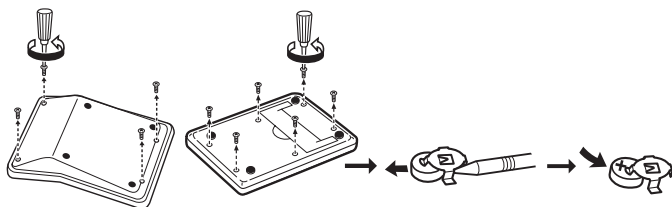


## BATTERY REPLACEMENT

## CAMBIO DE PILAS

EL-330W:

EL-334W:



## OPERATIONS

## OPERACIONES

- Press **CCE** twice to clear any residual values and calculation instructions in the calculator.
- EL-330W:  
Upon starting memory calculation, press **CM** to clear the memory.  
EL-334W:  
Before performing grand total (GT) memory calculation, press **GT** twice to clear the grand total memory contents.  
Upon starting memory calculation, press **CM** to clear the memory.
- For expressing calculation examples, only the symbols that are required for explanation are mentioned.
- Example procedures are listed in following manner unless otherwise specified.

(1) Example	(2) Key operations	(3) Display
-------------	--------------------	-------------

- The operations of multiple models are described in this manual. Therefore, the position of symbols in this manual may be different from your model.

- Pulse dos veces **CCE** para borrar cualquier instrucción y valor residual de la calculadora.
  - EL-330W:  
Al empezar a calcular empleando la memoria, pulse **CM** para borrar la memoria.  
EL-334W:  
Antes de realizar el cálculo de la memoria del total general (GT), presione dos veces **GT** para borrar el contenido de tal memoria.  
Al empezar a calcular empleando la memoria, pulse **CM** para borrar la memoria.
  - Al expresar ejemplos de cálculo, sólo se mencionan los símbolos necesarios para la explicación.
  - Los procedimientos de ejemplos están puestos de la siguiente manera, a menos que se especifique lo contrario.
- | (1) Ejemplo | (2) Operación de teclas | (3) Exhibición |
|-------------|-------------------------|----------------|
|-------------|-------------------------|----------------|
- En este manual se describen las operaciones de varios modelos. Por lo tanto, la posición de los símbolos en este manual puede ser diferente de la de su modelo.

## COST / SELL / MARGIN CALCULATION / CÁLCULO DE COSTOS / VENTAS / MÁRGENES

The entered value (enter value, then press **COST**, **SELL**, or **MGN**) will be kept in the buffer; re-entry will not be necessary when recalculating. The buffer contents will be cleared upon new entry, or when **CA** is pressed.

Immediately after pressing **CCE**, **COST**, **SELL**, or **MGN**, the set value of cost price / selling price / margin can be verified by using **COST**, **SELL**, or **MGN** key.

El valor introducido (incorpore el valor, después pulse **COST**, **SELL**, o **MGN**) se mantendrá en la memoria intermedia; el valor reintroducido no indica que volverá a realizarse necesariamente el cálculo. El contenido de la memoria intermedia se borrará con una nueva introducción, o cuando se presione **CA**.

Inmediatamente después de haber presionado **CCE**, **COST**, **SELL**, o **MGN**, el valor ajustado de precio de costo/precio de venta/margen podrá verificarse utilizando la tecla **COST**, **SELL**, o **MGN**.

- Determine the cost price for 30% margin when the selling price is set at \$500.  
① Selling Price ② Margin ③ Cost Price
- Determine el precio de costo para un margen del 30% cuando el precio de venta es de \$500.  
① Precio de venta ② Margen ③ Precio de costo

(2)	(3)
① <b>CCE</b> <b>CCE</b> <b>SELL</b> 500 <b>SELL</b>	500
② 30 <b>MGN</b>	30
③ <b>FIND</b> <b>COST</b> =	350

Entries in the order of "30 **MGN** 500 **SELL** **FIND** **COST**" are also valid.  
Las entradas en el orden de "30 **MGN** 500 **SELL** **FIND** **COST**" también son válidas.

- Determine the selling price for 30% margin when the cost price is set at \$350.  
① Cost Price ② Margin ③ Selling Price  
Note: Performing a selling price calculation will result in an error if the margin is set to 100%. Press **CCE** to clear the error.
- Determine el precio de venta para un margen del 30% cuando el precio de costo es de \$350.  
① Precio de costo ② Margen ③ Precio de venta  
Nota: La realización de un cálculo de precio de venta resultará en un error si el margen está ajustado al 100%. Para borrar el error, presione **CCE**.

(2)	(3)
① <b>CCE</b> <b>CCE</b> <b>COST</b> 350 <b>COST</b>	350
② 30 <b>MGN</b>	30
③ <b>FIND</b> <b>SELL</b> =	500

Entries in the order of "30 **MGN** 350 **COST** **FIND** **SELL**" are also valid.  
Las entradas en el orden de "30 **MGN** 350 **COST** **FIND** **SELL**" también son válidas.

- Determine the margin when the cost price is set at \$350, and the selling price at \$500.  
① Cost Price ② Selling Price ③ Margin  
Also, obtain the margin when the cost price is set to \$250.
- Determine el margen cuando el precio de costo es de \$350 y el precio de venta es de \$500.  
① Precio de costo ② Precio de venta ③ Margen  
Además, obtenga también el margen cuando el valor del precio de costo se establezca en \$250.

(2)	(3)
① <b>CCE</b> <b>CCE</b> <b>COST</b> 350 <b>COST</b>	350
② 500 <b>SELL</b>	500
③ <b>FIND</b> <b>MGN</b> =	30
250 <b>COST</b>	250
<b>SELL</b>	500
<b>FIND</b> <b>MGN</b> =	50

Entries in the order of "500 **SELL** 350 **COST** **FIND** **MGN**" are also valid.  
Las entradas en el orden de "500 **SELL** 350 **COST** **FIND** **MGN**" también son válidas.

## HOW TO PERFORM BASIC CALCULATIONS / PARA EFECTUAR CÁLCULOS BÁSICOS

- In these display examples, symbols such as "=" and "+", "-", "x", "÷" which are visible on the actual display are omitted.
- En estos ejemplos de visualización se omiten los símbolos tales como "=", "+", "-", "x", "÷" que si aparecen en la visualización real.

EL-334W:

- If the value obtained by pressing  $\square$  and  $\square$  is other than 0, it is automatically added to the grand total memory and the "G" symbol appears on the display. Note that the "G" symbol is not shown in this operational manual, except for in the grand total calculation display.
- Si el valor obtenido pulsando  $\square$  y  $\square$  no es 0, se añadirá automáticamente a la memoria de gran total, y en el visualizador aparecerá el símbolo "G". Tenga en cuenta que el símbolo "G" no se indica en este manual de manejo, excepto para la visualización del cálculo del gran total.

(1)	(2)	(3)
	$\square$ $\square$	0.
$(-24+2)+4=-5.5$	$\square$ 24 $\square$ 4 $\square$ 2 $\square$ 4 $\square$	-5.5
$13 \times (-4) + 2 = -26$	13 $\square$ 4 $\square$ 2 $\square$ 4 $\square$	-26.
$34+57=91$	34 $\square$ 57 $\square$	91.
$45+57=102$	45 $\square$ $\square$	102.
$38-26=12$	38 $\square$ 26 $\square$	12.
$35-26=9$	35 $\square$ $\square$	9.
$68 \times 25 = 1700$	68 $\square$ 25 $\square$	1'700.
$68 \times 40 = 2720$	40 $\square$	2'720.
$35 \div 14 = 2.5$	35 $\square$ 14 $\square$	2.5
$98 \div 14 = 7$	98 $\square$ $\square$	7.
$200 \times 10\% = 20$	200 $\square$ 10 $\square$	20.
$(9+36) \times 100 = 25$	9 $\square$ 36 $\square$	25.
$200 + (200 \times 10\%) = 220$	200 $\square$ 10 $\square$	220.
$4^3 = (4^3)^2 = 4096$	4 $\square$ $\square$ $\square$ $\square$ $\square$	4'096.
$1/8 = 0.125$	8 $\square$ $\square$	0.125
$25 \times 5 = 125$	$\square$ 25 $\square$ 5 $\square$	125.
$84 \div 3 = 28$	84 $\square$ 3 $\square$	28.
$68 + 17 = 85$	68 $\square$ 17 $\square$	85.
$182$	$\square$	182.
$2+3 \rightarrow 2+4=6$	2 $\square$ 3 $\square$ 4 $\square$	6.
$5 \times 2 \rightarrow 5 \div 2 = 2.5$	5 $\square$ 2 $\square$	2.5
$123456 \rightarrow 123478$	123456 $\square$ 78 $\square$	123'478.
EL-330W: $9876543211 + 0.444$ $\times 555$ $= 1234.567901 \times 10^{10}$	$\square$ 9876543211 $\square$ 0.444 $\square$ $\square$ 555 $\square$ $\square$ 1234.567901 $\square$ 10 $\square$	€ 2.224466689 1'234.567901
EL-334W: $987654320988 + 0.444$ $\times 555$ $= 1234.56790123 \times 10^{12}$	$\square$ 987654320988 $\square$ 0.444 $\square$ $\square$ 555 $\square$ $\square$ 1234.56790123 $\square$ 10 $\square$ 2 $\square$	€ 2.2244666889 1'234.56790123
EL-334W: $100+200=300$ $300+400=700$ $+ 500+600=1100$ $2100$	$\square$ 100 $\square$ 200 $\square$ $\square$ 300 $\square$ 400 $\square$ $\square$ 500 $\square$ 600 $\square$ $\square$	0. 300. 700. 1'100. 2'100.

## CALCULATING TAX / CÁLCULO DEL IMPUESTO

- To perform a tax calculation, first it is absolutely necessary to set and check the tax rate. (The initial tax rate is 0.)  
A tax rate can be set (or changed) with a number containing up to four digits. (Decimal point is not regarded as a digit.)  
The set tax rate is retained until it is changed. However, the set tax rate may be changed or lost if the battery is consumed largely.
- Para hacer cálculos de impuestos, es esencial ajustar y comprobar primero la tasa de impuestos (La tasa de impuestos por defecto es 0).  
La tasa de impuestos puede ser ajustada (o cambiada) con un número de hasta cuatro dígitos. (El punto decimal no se considera como un dígito).  
La tasa de impuestos se mantiene mientras no se la cambie. Sin embargo, la tasa de impuestos puede variar o borrarse si la carga de la batería baja demasiado.

- Confirming the tax rate. (0%)  
Para confirmar la tasa impositiva. (0%)

(2)	(3)
$\square$ $\square$ RATE RECALL $\square$ TAX $\square$	TAX RATE 0.

- Set a 5% tax rate.  
Calculate the tax on \$800 and calculate the total including tax.
- Establezca un tipo de impuesto del 5%.  
Calcule el impuesto sobre \$800 y calcule el total incluyendo el impuesto.

(2)	(3)
$\square$ $\square$	0.
RATE SET $\square$ TAX 5	TAX RATE 5.
$\square$ $\square$ 800	800.
$\square$ TAX	+TAX 840.
$\square$ TAX	TAX 40.

- Perform two calculations using \$84 and \$52.5, both of which already include tax. (tax rate: 5%)  
Calculate the tax on the total and the total without tax.
- Realice dos cálculos utilizando \$84 y \$52.5, los cuales ya incluyen impuesto. Calcule el impuesto sobre el total y el total sin impuesto. (tasa de impuestos: 5%)

(2)	(3)
$\square$ $\square$ 84 $\square$ + $\square$ 52.5 $\square$ =	136.5
$\square$ TAX	-TAX 130.
$\square$ TAX	TAX 6.5

EL-330W:

## PERFORMING A MULTIPLE CONVERSION / REALIZACIÓN DE UNA CONVERSIÓN MÚLTIPLE

- Before performing Multiple Conversion, set and confirm a conversion rate first. (The initial conversion rate is "0".)  
A conversion rate can be set (or changed) using 6 digits. (A decimal point does not count as 1 digit.)  
Once set, the conversion rate is memorized until it is changed. However, the conversion rate may change because of battery replacement or consumption, etc.
- Antes de realizar una conversión múltiple, confirme el tipo de conversión. (El tipo de conversión inicial es "0".)  
El tipo de conversión podrá ajustarse (o cambiarse) utilizando 6 dígitos. (El punto decimal no se contará como un dígito.)  
Una vez establecido, el tipo de conversión permanecerá memorizado hasta que se cambie. Sin embargo, el tipo de conversión puede cambiar debido al reemplazo o el consumo de la pila, etc.

- Confirm the conversion rate (0).  
Confirme el tipo de conversión (0).

(2)	(3)
$\square$ $\square$ RECALL $\square$	A TAX RATE 0.

- Set up a conversion rate (i.e. 1 dollar = 123.45 yen).  
Converting 120 dollars to yen (Conversion rate: 1 dollar = 123.45)
- Establezca el tipo de conversión (es decir, 1 dólar = 123.45 yenes).  
Conversión de 120 dólares en yenes (Tipo de conversión: 1 dólar = 123.45 yenes)

(2)	(3)
$\square$ $\square$	0.
SET $\square$ 123.45	A TAX RATE 123.45
$\square$ $\square$	0.
120	120.
$\square$	A TAX RATE 148.14

- Set a conversion rate of 1 m = 39.3701 inches, and convert 472.4412 inches to meters.
- Establezca el tipo de conversión de 1 m = 39.3701 pulgadas, y convierta 472.4412 en metros.

(2)	(3)
$\square$ $\square$	0.
SET $\square$ 39.3701	A TAX RATE 39.3701
472.4412	472.4412
$\square$	B 12.

### In U.S.A.:

**LIMITED WARRANTY**

VICTOR TECHNOLOGY LLC warrants to the first consumer purchaser that this Sharp brand product (the "Product"), when shipped in its original container, will be free from defective workmanship and materials, and agrees that it will, at its option, either repair the defect or replace the defective Product or part thereof with a new or remanufactured equivalent at no charge to the purchaser for parts or labor for the period(s) set forth below.

This warranty does not apply to any appearance items of the Product nor to the additional excluded item(s) set forth below nor to any Product the exterior of which has been damaged or defaced, which has been subjected to improper voltage or other misuse, abnormal service or handling, or which has been altered or modified in design or construction.

In order to enforce the rights under this limited warranty, the purchaser should follow the steps set forth below and provide proof of purchase to the seller.

The limited warranty described herein is in addition to whatever implied warranties may be granted to purchasers by law. ALL IMPLIED WARRANTIES INCLUDING THE WARRANTIES OF MERCHANTABILITY AND FITNESS FOR USE ARE LIMITED TO THE PERIOD(S) FROM THE DATE OF PURCHASE SET FORTH BELOW. Some states do not allow limitations on how long an implied warranty lasts, so the above limitation may not apply to you.

Neither the sales personnel of the seller nor any other person is authorized to make any warranties other than those described herein, or to extend the duration of any warranties beyond the time period described herein on behalf of Victor.

The warranties described herein shall be the sole and exclusive warranties granted by Victor and shall be the sole and exclusive remedy available to the purchaser. Correction of defects, in the manner and for the period of time described herein, shall constitute complete fulfillment of all liabilities and responsibilities of Victor to the purchaser with respect to the Product, and shall constitute full satisfaction of all claims, whether based on contract, negligence, strict liability or otherwise. In no event shall Victor be liable, or in any way responsible, for any damages or defects in the Product which were caused by repairs or attempted repairs performed by anyone other than an authorized service. Nor shall Victor be liable or in any way responsible for any incidental or consequential economic or property damage. Some states do not allow the exclusion of incidental or consequential damages, so the above exclusion may not apply to you.

**THIS WARRANTY GIVES YOU SPECIFIC LEGAL RIGHTS. YOU MAY ALSO HAVE OTHER RIGHTS WHICH VARY FROM STATE TO STATE.**

<b>Your Product:</b>	Electronic Calculator
<b>Warranty Period for this Product:</b>	One (1) year parts and labor from date of purchase.
<b>Additional Items Excluded from Warranty Coverage:</b>	Any consumable items such as paper, maintenance cartridge, ink cartridges supplied with the Product or to any equipment or any hardware, software, firmware, fluorescent lamp, power cords, covers, rubber parts, or peripherals other than the Product.
<b>How to Obtain Service:</b>	Call Victor Technology LLC toll free at 1-844-578-1637 or email SharpService@victortech.com. You may be asked to ship your Product to Victor Technology LLC for repair. Be sure to have proof of purchase available. If you ship or mail the Product, be sure it is packaged carefully.

TO OBTAIN SUPPLY, ACCESSORY OR PRODUCT INFORMATION, CALL 1-844-578-1637.  
Sharp Calculator Service by Victor Technology LLC  
www.SharpCalculators.com