

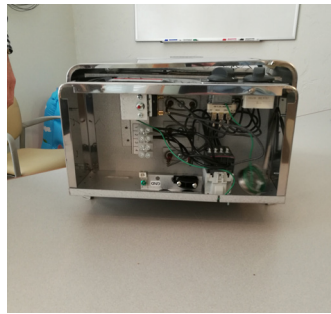


Almost Heaven Saunas

THE AUTHENTIC SAUNA EXPERIENCE

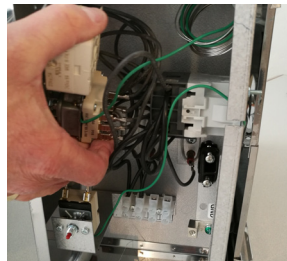
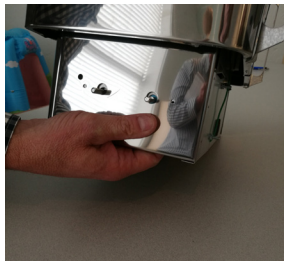
Heater Control Guide

If you need to access the heater controls from the side due to the configuration of your sauna, follow these easy steps to move them to your desired location.



STEP 1 - Remove either the stainless plate or UL plate from the left or right of the heater, depending on which side you want the controls by removing 2 screws. Then remove the three screws from the bottom plate and remove it.

STEP 2 - Remove the dials from the front by gently prying out with a screwdriver and unscrew the plate beneath them.



STEP 3 - From the inside of the heater, move the heater controls to the desired left or right side.

STEP 4 - Replace the panel, dials, and bottom plate and screw the side panel you removed initially onto the front.

