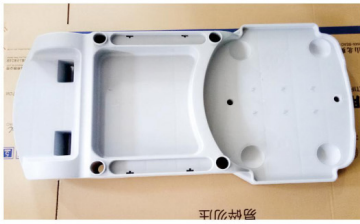


Janitor cart Install Manual

1



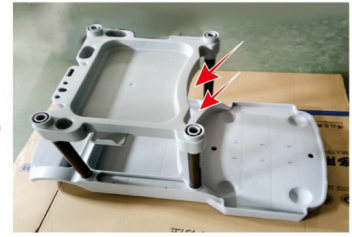
Put down floor plate

2



Put Pillar in the hole

3



Middle plate connect with 4 pillar. Make sure the floor plate and middle plate in the correct direction

4



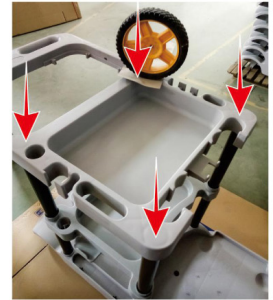
Put Pillar in the hole

5



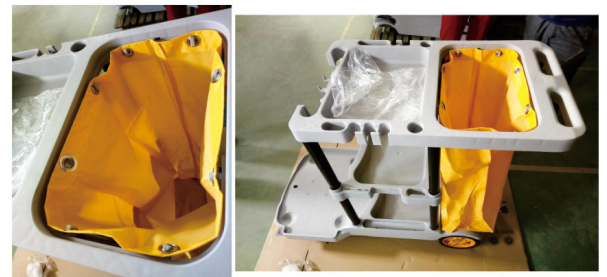
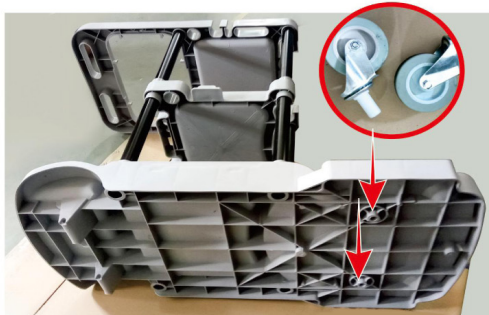
Connect upper plate with pillar

6



Knock with hammer, but make sure put a heavy paper on upper plate to stop scratching the surface

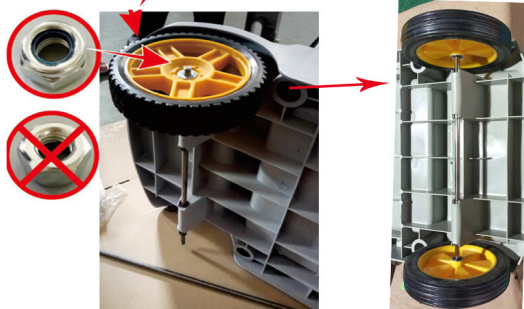
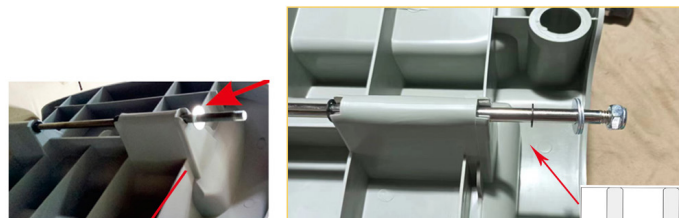
7



9

2pcs screws ,4pcs gaskets and 4 semi-circles ready on the pole.

8



1 . Twist screws and gaskets on the outside of both ends of the pole then retain semi-circle.

2 .in turn install wheels and gasket then mount screws gasket

Pay attention on the the screw direction when install