

The background of the entire page is a close-up, high-speed photograph of water. It shows clear, flowing water with numerous small, bright bubbles and larger, more defined air pockets. The lighting is bright, creating a shimmering effect on the water's surface. A solid blue rectangular overlay is positioned in the upper left quadrant, containing the title text in white. The overall color palette is dominated by various shades of blue and white.

# ROVSUN WATER DISTILLER USER MANUAL

Made In China

**Thanks for your purchase. Any questions please don't hesitate to contact us, we'll resolve all your problem ASAP. Customers are always the best teachers for us to keep growing!**

## Important Notes

Please read before use and file for future use. ZB-1,ZB-2 these two models share the same user manual. The pictures take one of them as an example, please refer to these for the other two models.

## Before Use

1. Unpack the water distiller and check all the components are present and undamaged. The box should contain:
  - 1) Distiller
  - 2) Water bottle
  - 3) Discharge Cap
  - 4) Bottle Cap
  - 5) Filter
  - 6) Main power wire
  - 7) Chamber cleaning powder
  - 8) Instruction Manual
  - 9) Activated charcoal sachets
  - 10) Water outlet soft catheter (Food grade)



## 2. NOTE:

- 1) Water Bottle is inside the distiller, Filter includes activated carbon sachet.
- 2) The chamber cleaning powder should be purchased by customer. You can buy citric acid powder that is food safety grade or white vinegar to clean the distiller.
- 3) 5 BONUS GIFTS:
  - 3 x Activated charcoal sachets: Remove most tap water contaminants
  - 1 x Water outlet Soft Catheter: Prevent leakage
  - 1 x Chamber cleaning powder: Clean the unit



3. Check if the top cover is put flatly and there is any gap in the junction part. Ensure the junction part to be fully sealed.

4. Please fully insert the plug of the top cover and main power cord into the socket on the machine, in order to avoid overheating and damage of the socket due to poor contact.



## Specification

Rated voltage: 110V  
Rated frequency: 60HZ  
Power rating: 750W

Volume: 4L  
Degree of evaporation: 1L/H  
Over-temperature safe: cut off at temperature of 302 °F

# Water Bottle

## 1. Glass bottle

- 1) The glass bottle is within the water distiller. Take it out and assemble it step by step. After assembly, don't put the glass bottle above the stove for heating.
- 2) The glass bottle should be installed with the handle for use. The water bottle must be handled carefully, because the handle is on one side, the weight of a full container necessitates using two hands to carry it.
- 3) The cover of the glass bottle is fixed. Don't pry it up by force, or the user might get hurt.
- 4) Inject the soap water into the glass bottle for cleaning. Put it in a still state for a while and then wash it. Don't wash the glass bottle using the hot and cold water alternatively, or the bottle might be broken.

How to install the handle



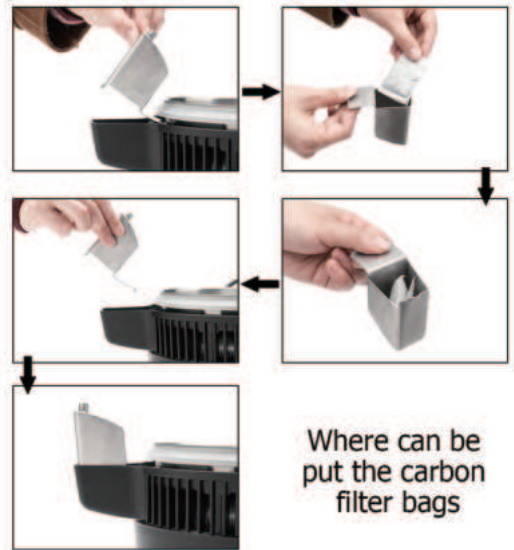
## 2. Plastic Bottle



## Activated Charcoal Sachet

1. Fold the activated charcoal sachet and put it into the filter.
2. Restore the filter to the top cover in the original state.
3. NOTE:

- 1) Please replace activated charcoal sachet every 1-2 months in order to remain the purity of distilled water. Or replace it according to the use frequency or practical situations.
- 2) Please immediately replace activated charcoal sachet when the distilled water smells abnormally during use process.
- 3) Three activated charcoal sachets are given for free. One has been put in the filter, so there is no need to install the sachet when using it for the first time.



## Sealing Ring

How to install the sealing ring

How to install the silicone





## Reset Button & Switch

1. The reset button is just for starting the machine. It is not for operation. The machine will auto-switch-off when finished.
2. The reset button of the water distiller has been set to be "start" after leaving the factory, so you don't need to press it to start the machine for the first time. The user just needs to plug the top cover and main power line for an automatic start.
3. Reset button will begin a new distilling cycle until the last cycle is over. And the unit will automatically turn itself off when every cycle is finished.
4. The lower-right picture shows the water purification switch. It turns the device on RESET and off. If you wish to pause the device, simply switch it off. This allows the device to run for extended periods.



**NOTE:** Do not remove the cover while the unit is in mid-cycle. After power off, the internal temperature of the machine is still very high. It must be cooled down for at least 20 minutes after distilled process is finished, then remove the top cover to avoid scalding injuries.

## Set Up

1. Unpack the box and take out the water distiller.  
There are two parts of it, Top Cover and Machine Body. Lift the Top Cover up and take out the Water Bottle.
2. Lift the Top Cover up and fill the stainless tank with water up to the maximum water level line. **Please pay attention not to exceed the FULL water level line (Time of water distilled can be reduced if filling with hot water) .**
3. **Place top cover on the machine body, check carefully if the top cover is correctly sealed and adjust the position from left-right control, and make sure the silicon seal is correctly in place around the entire rim. Check to make sure the unit is on a stable surface.** Then plug the power wire of the top cover into the machine's body.



Food-grade 304 stainless steel interior



4. Connect the main power wire with machine body and plug in the electric outlet. Press "Reset Button", the fan and distilling process begin.
5. Water will begin to drip into the storage bottle after approximately 30 minutes. **It will take approximately 4 hours to distill 4 Liters of water (depend on local environment and temperature)** . The unit will automatically shut down when the process finished.  
**PS: The unit must be allowed to cool down under 70 °C before starting another distilling cycle. This will prevent injuries from scalding water and prolong the life of the distiller.**
6. If continuous process, after water bottle fully filled with distilled water, but reset button still in power, disconnect the power wire of the top cover and main power wire to prevent injuries from scalding water.
7. Please take off the top cover after 10 minutes and refill in with water, put the top cover back stably and connect the power wire of the top cover and main power wire, the distiller restarts to warm up and re-process. **The distiller is reliable and safe under 24hrs process.**
8. **Do not use the first bottle of distilled water.** It will take one distilling cycle for the unit to self clean. Wipe out tank and rinse / discard water in storage bottle.

## Warning

1. Please read the instructions carefully before use.
2. Unit should be used in a dry, well ventilated area. It is suggested to use in the kitchen to avoid the voice of cooling fan while process.
3. Please use electric outlet of 110V, and not plug in with other electronics at the same time in order to avoid overloading. Please fully insert the plug of the top cover and main power cord into the socket on the machine.
4. Please do not used the damaged wire in order to prevent leakage of electricity.
5. Please turn off the power switch and leave the power cord unconnected when the unit is not in use, filling with water and cleaning. Please do not use the machine in an unmanned state.
6. Do not immerse any part of the unit into water.
7. Please keep it away from children in order to avoid scalding injuries.
8. Do not use wire brush to clean the stainless tank, it will damage the surface of tank and easier to stick with drain. Please clean the machine body and sealing ring regularly.
9. Keep the body of the unit dry, especially electric outlet, avoid leakage of electricity.
10. When receiving the package, there may be some plastic smell, it is a normal phenomenon. You can put it at a ventilated place and wash it before the first use.
11. Please pay attention to the daily maintenance and replacement of the machine and accessories:
  - ① The life of the machine is generally 4-5 years.
  - ② If the silicone sealing ring is used for too long and expires, it will cause water leakage. We suggest you replace the sealing ring once a year.
  - ③ Every 3 years, you need to pay attention to whether some buttons, sockets, power cords, etc. are aging or deformed.

## Cleaning

1. Rinse and wipe out tank everyday using clean water and keep it dry.
2. The stainless-steel liner must be rinsed and cleaned by water. Calcification and scale will build up on bottom of the tank and should be removed every month by using specific cleaning agent.

Please follow the below instructions:

- 1) Pour in enough hot water to cover scale in the tank.
- 2) Pour 1-4 teaspoons cleaning agent into tank depending on the amount of scale.
- 3) Insert the main power wire, leave lid off unit and start up a cycle by pushing "Reset button".
- 4) Let cycle run for 30 minutes, unplug the power line, pour out water and wash the inside of tank with clean water.
- 5) If scale is not completely removed, please repeat the process.

NOTE: Don't use the corrosive cleaning agent or hard brush to avoid damaging the surface of the stainless-steel liner. Use the soft cloth to wipe the stainless-steel tank after cleaning.

- 6) Using dry cloth to wipe the plug on the two ends after cleaning. This can prevent water seepage of the socket, thus causing electric leakage.

## Common Faults and Analyses

### 1. No distilled water come out

- 1) Main power wire and power wire of the top cover disconnected.
- 2) Out of power for electric outlet.
- 3) Reset button is not pressed  
(indication light is not on).
- 4) No water filled with stainless tank.

### 2. Not enough volume of distilled water after cycle finished

- 1) Water does not fill in to the highest water level line.
- 2) The sealing rubber ring of top cover is failure to work, need to be changed.
- 3) The sealing rubber ring is squeezed by the filter, the filter needs to be set up properly.
- 4) The filter does not align to the water bottle properly.

### 3. The sealing area between top cover and machine body jittering

- 1) Top cover and machine body does not close tightly.
- 2) Too much drain retained in the filter, filter needs to be changed.

#### HOW DOES THE WATER DISTILLER WORK

