

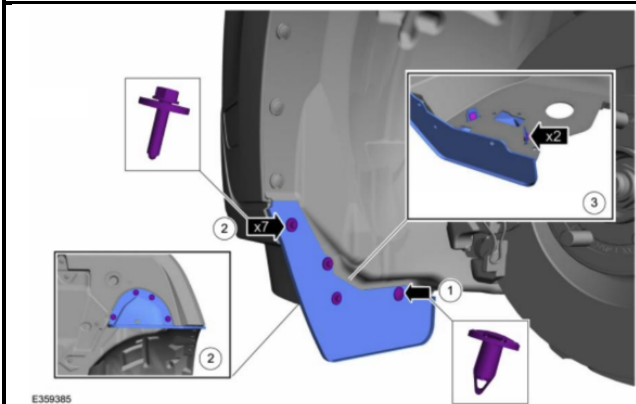


2022+ Ford Maverick Fog Light Brackets

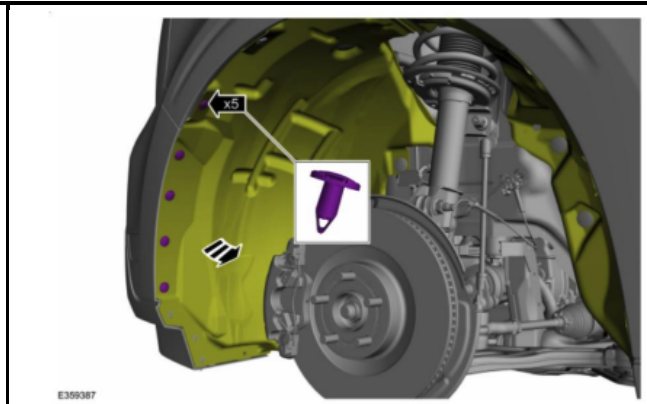
| CONTENTS | | TOOLS |
|----------|---|--|
| QTY | DESCRIPTION | 7mm, 10mm & 15mm sockets and/or wrenches |
| 2 | Fog Light Brackets (One Left & One Right) | T30 Torx Bit |
| 4 | M10 x 20mm Serrated Flange Hex Head Screw | Plastic Clip Removal Tool |
| 4 | M10 Serrated Flange Locknut | |

Installation Instructions

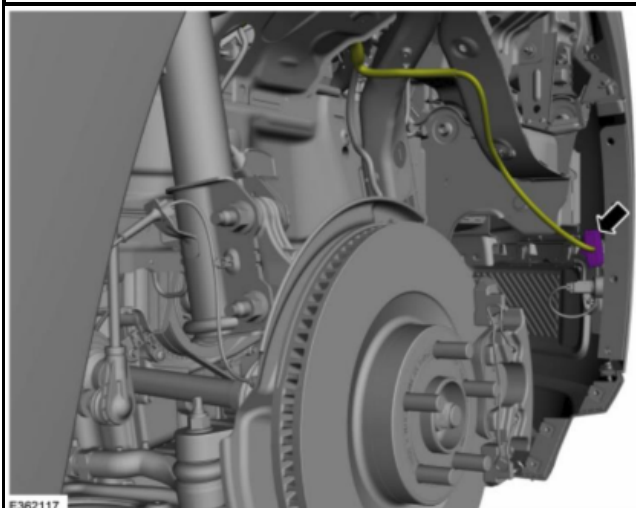
The factory manual suggests that you remove the front wheels prior to removing the front bumper cover; this is not entirely necessary but could allow for easier access for the rest of the bumper cover removal.



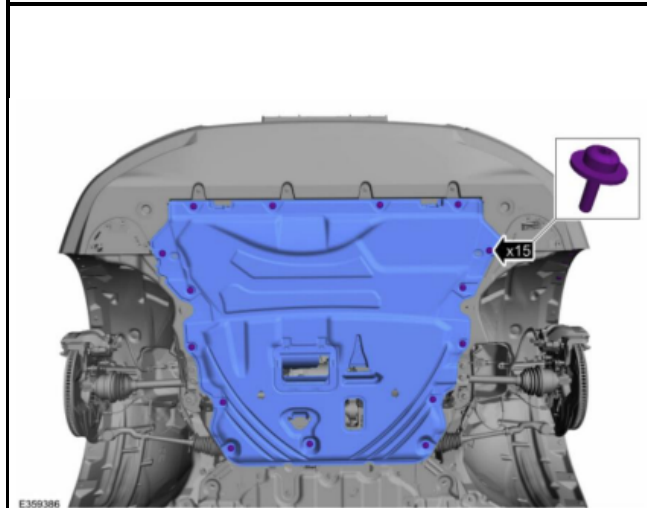
1. Remove the plastic air deflectors. This requires a 7mm socket for the screws and a small pry tool for the clips. To remove the clips, you must first raise the inner pin. With the inner pin raised or removed, you can then remove the outer pin (see 1 below). This step applies to both sides.



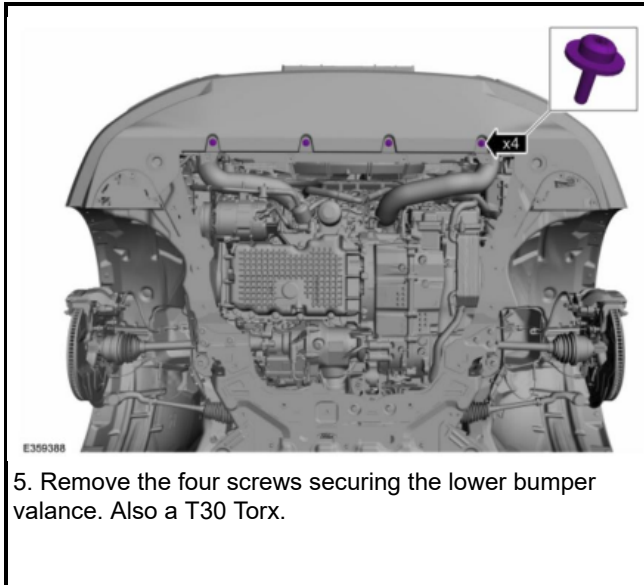
2. Remove the 5 push pins that secure the fender liner to the bumper cover and fender. Applies to both sides.



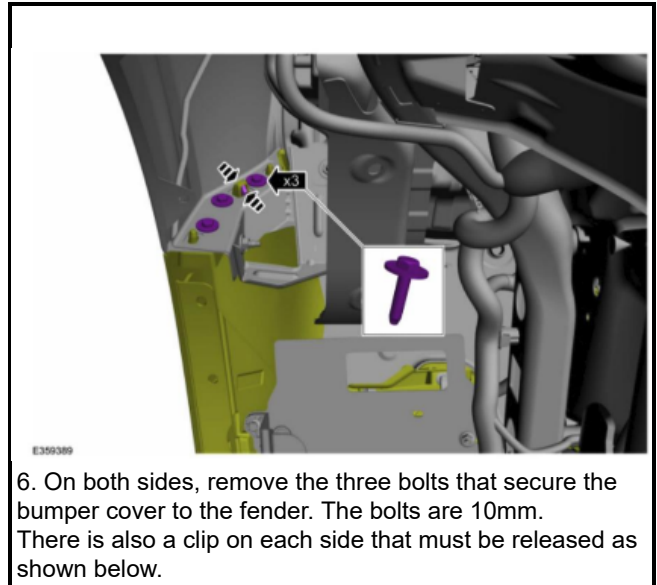
3. Disconnect the front bumper wiring harness. This is located on the passenger side and can be accessed from behind the fender liner



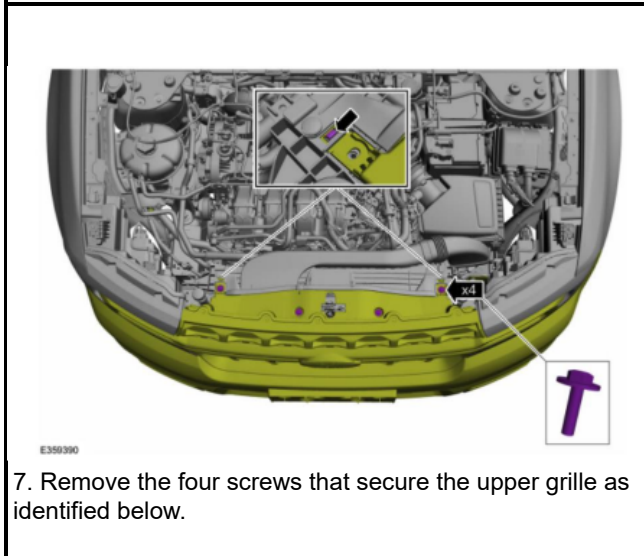
4. Remove the engine splash shield. This requires a T30 Torx bit. There are 15 screws in total.



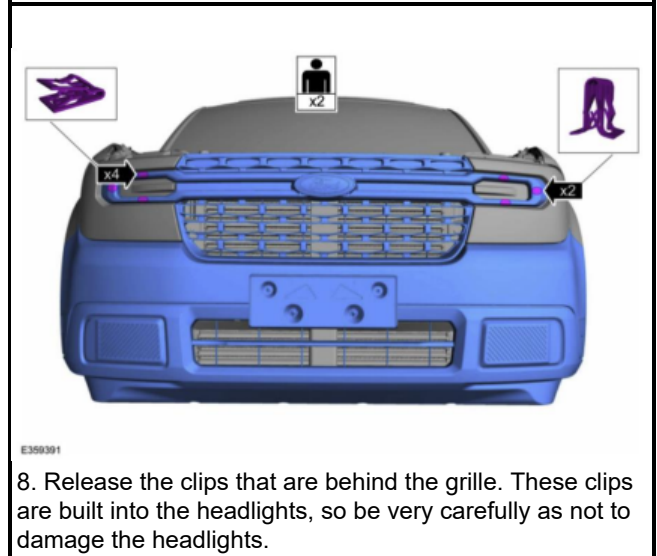
5. Remove the four screws securing the lower bumper valance. Also a T30 Torx.



6. On both sides, remove the three bolts that secure the bumper cover to the fender. The bolts are 10mm. There is also a clip on each side that must be released as shown below.



7. Remove the four screws that secure the upper grille as identified below.



8. Release the clips that are behind the grille. These clips are built into the headlights, so be very carefully as not to damage the headlights.

9. The bumper is now ready to be removed from the vehicle. An additional person may be helpful to make sure that the bumper is not damaged as you carefully remove it from the vehicle. Prior to removing the bumper cover, it would be wise to place a moving blanket nearby or in front of the vehicle as to avoid any paint damage while the bumper cover is off the vehicle.

10. With the bumper cover removed, you can now install the fog light brackets using the supplied hardware. The fog light brackets will install into the existing holes as identified below.





Passenger Side Bracket Installed



Driver Side Bracket Installed

You may have noticed that the mounting brackets are slotted vertically. It is recommended to start with the mounting brackets mounted all of the way up, as shown above. The overall height of your lights will determine where these brackets mount but starting with the brackets up and adjusting them down as necessary seems to work best.

If you purchased optional bezels, please refer to those installation instructions at this time. If you did not purchase bezels, you may proceed in cutting the required openings in your bumper valance as you see fit in order to complete installation.

Lights can now be mounted to the brackets. The bumper cover will need to be test fitted to the vehicle to aid in locating and aiming your lights. This may require several test fits in order to complete installation. It is best to start with the passenger side as it is fairly open behind the bumper on that side. The driver side has the ECU behind the bumper cover, so workspace is much tighter. Starting with the passenger side will give you a better idea of how to mount and aim your lights for the driver side, as the driver side will simply be mirrored from the passenger side. Once you are satisfied with the placement and aim of your lights, the bumper removal steps as previously outlined can be followed in reverse to properly reinstall the bumper cover.



DISCLAIMER FOR JJC LLC PRODUCTS: Buyer assumes all risk and liability whatsoever for the installation and use of JJC LLC products. JJC LLC assumes no liability for injury, loss, incidental or consequential damages incurred as a result of the use or installation of these products. Professional installation is recommended.